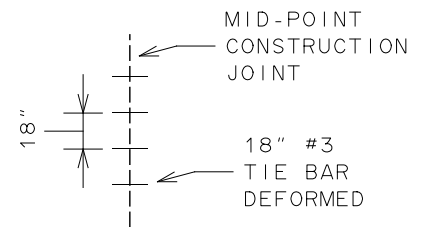


NOTES:

1. TO BE USED ONLY FOR COMMERCIAL DRIVEWAYS WHERE DAILY VOLUME OF OVERSIZED VEHICLES REQUIRES ADDITIONAL STRUCTURAL SUPPORT AND ONLY WHERE APPROVED BY CITY.
2. NOMINAL WIDTH OF DRIVEWAY APRON AT BACK EDGE IS 24 FEET MAXIMUM FOR TWO-WAY COMMERCIAL DRIVEWAY, 16 FEET MAXIMUM FOR ONE-WAY COMMERCIAL DRIVEWAY. ACTUAL WIDTH WILL BE AS APPROVED BY CITY.
3. SCORING PATTERN EVERY 3 TO 6 FEET SPACED EQUALLY AND ALONG INTERIOR TRANSITION EDGES.
4. CONTRACTION JOINT 1/4 INCH WIDE X 2 1/2 INCH DEEP AROUND OUTER LIMITS OF DRIVEWAY APRON.
5. FULL DEPTH 1/2 INCH WIDE EXPANSION JOINT ACROSS SIDEWALK AT BOTH ENDS, BETWEEN SIDEWALK AND MAIN DRIVE PAVEMENT AND AROUND OUTER LIMITS OF DRIVEWAY APRON WHERE ABUTS OTHER PAVED SURFACES.



CITY OF ROCHESTER

HEAVY-DUTY COMMERCIAL DRIVEWAY APRON

ISSUED	2-10-00	NON-STANDARD
REVISED	3-1-18	DWG.NO.S608-25