

Precedent Images

TRAIL AND REST AREAS



Bikeway trail striping and safety improvements



Places to rest along trail... simple stone and planting



Places to rest in nature

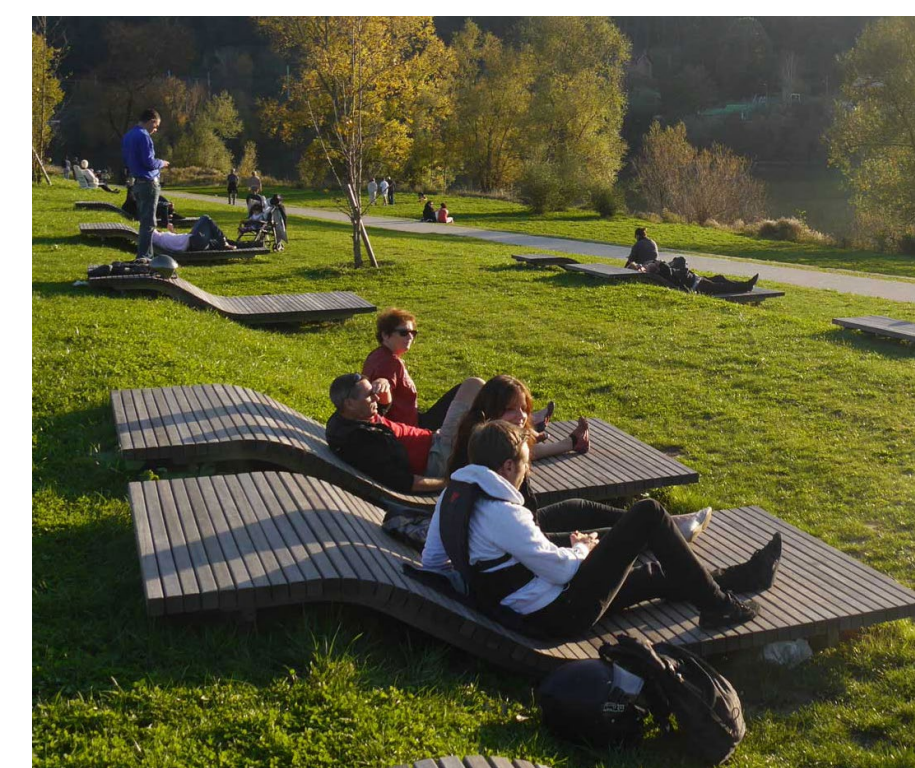


Varied trail pathways promote exploration



Creating small places to chat

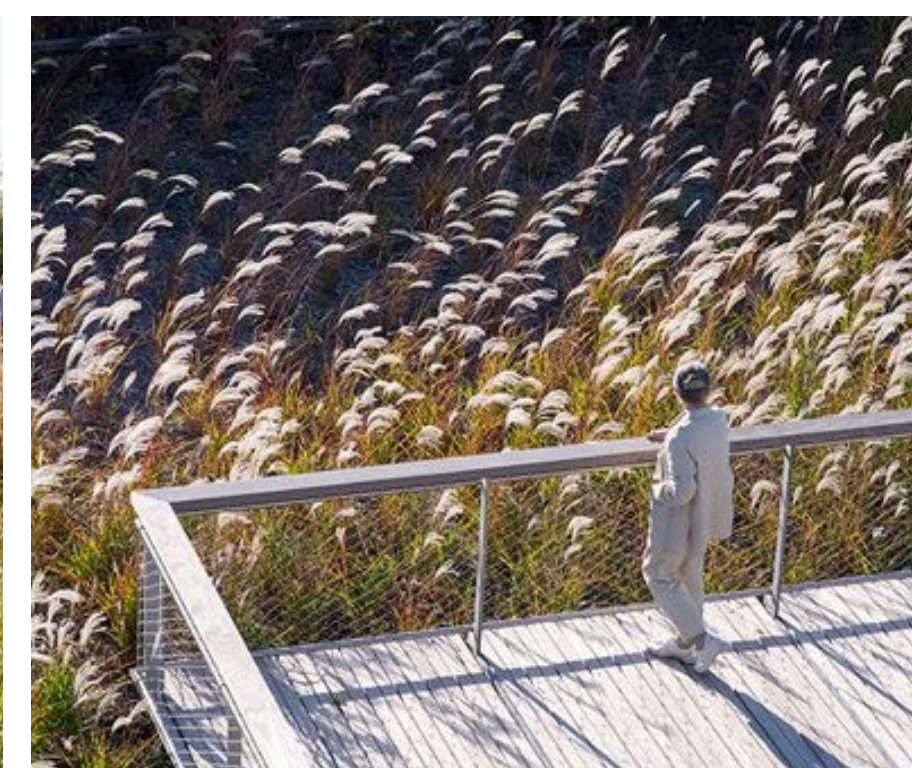
NATURALIZED PLANTING / DISCOVERY PATHS



Lounge seating along river walk



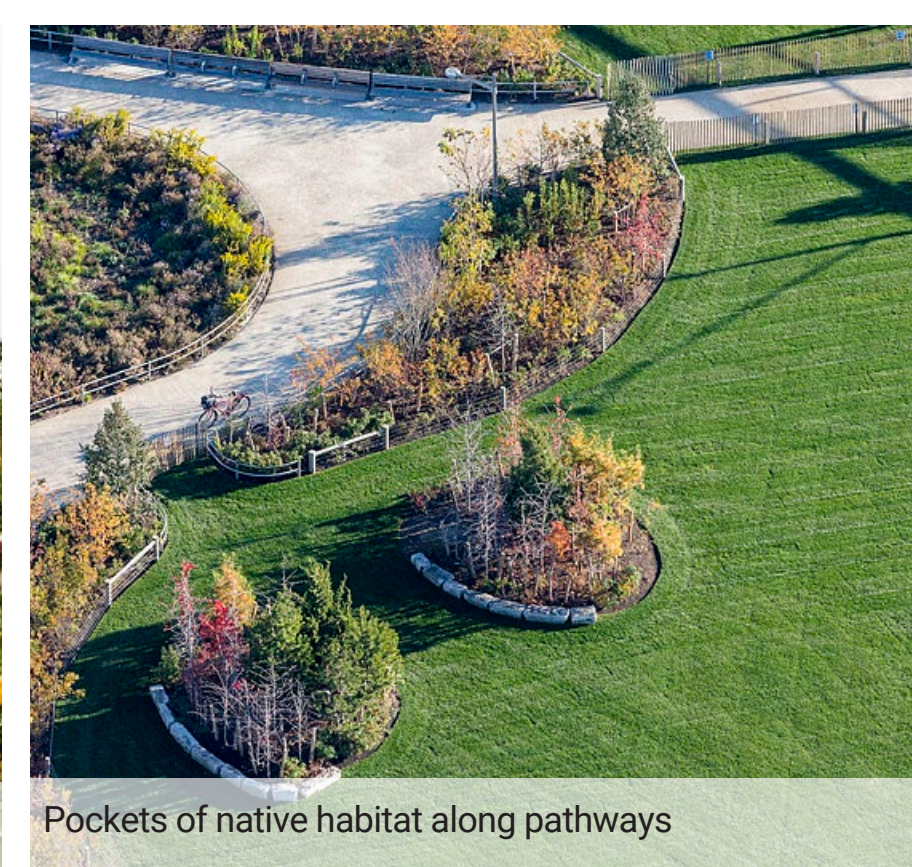
Discovery paths have places to sit



Overlooks within naturalized planting



Discovery paths within naturalized planting



Pockets of native habitat along pathways



Naturalized planting offers places to play

RECREATION FACILITIES AND AMENITIES



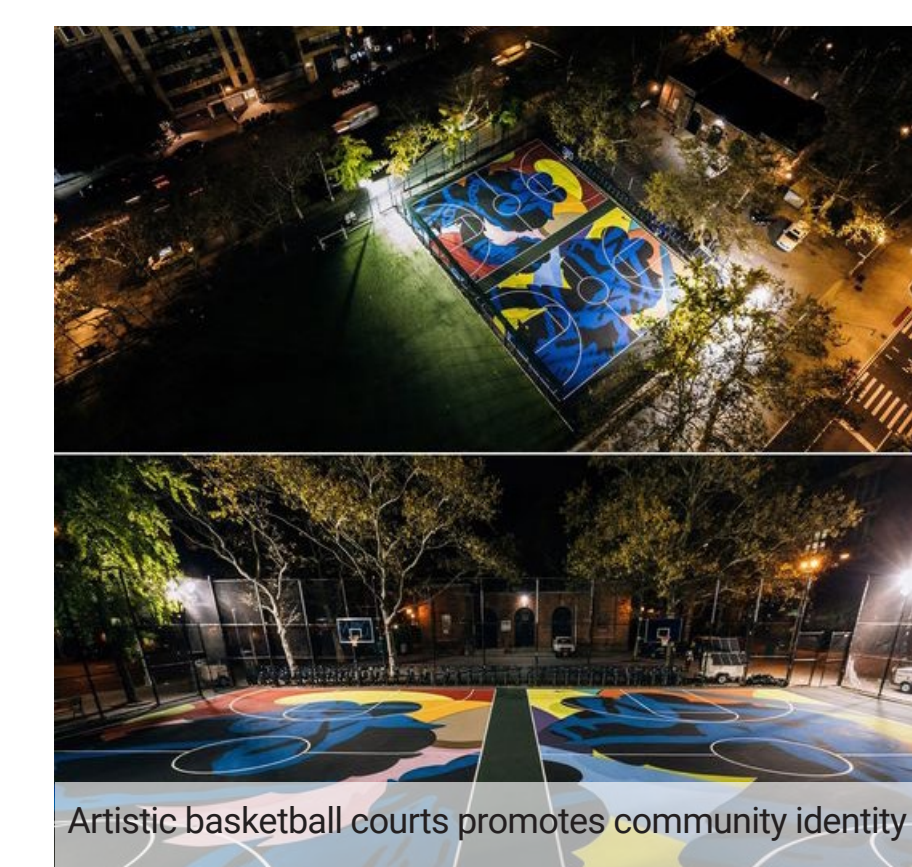
Small kayak rental, bathroom, and concessions building



Plazas and walks large enough for market use



Fun and brightly colored exercise areas



Artistic basketball courts promotes community identity



Courts can provide space for community gatherings

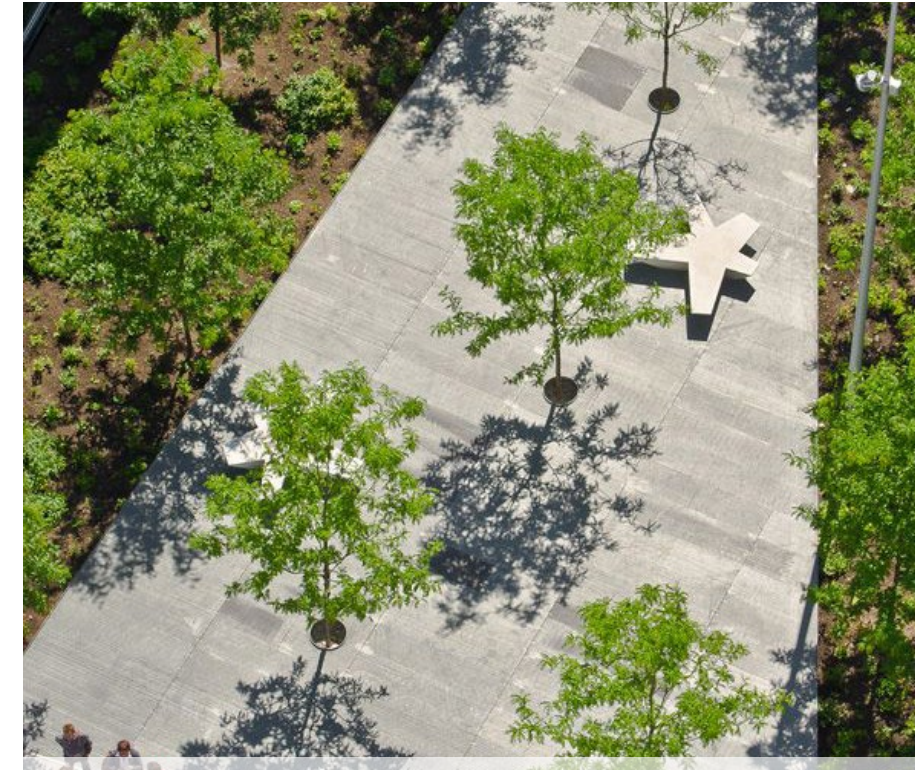


Artistic shade structure with seating

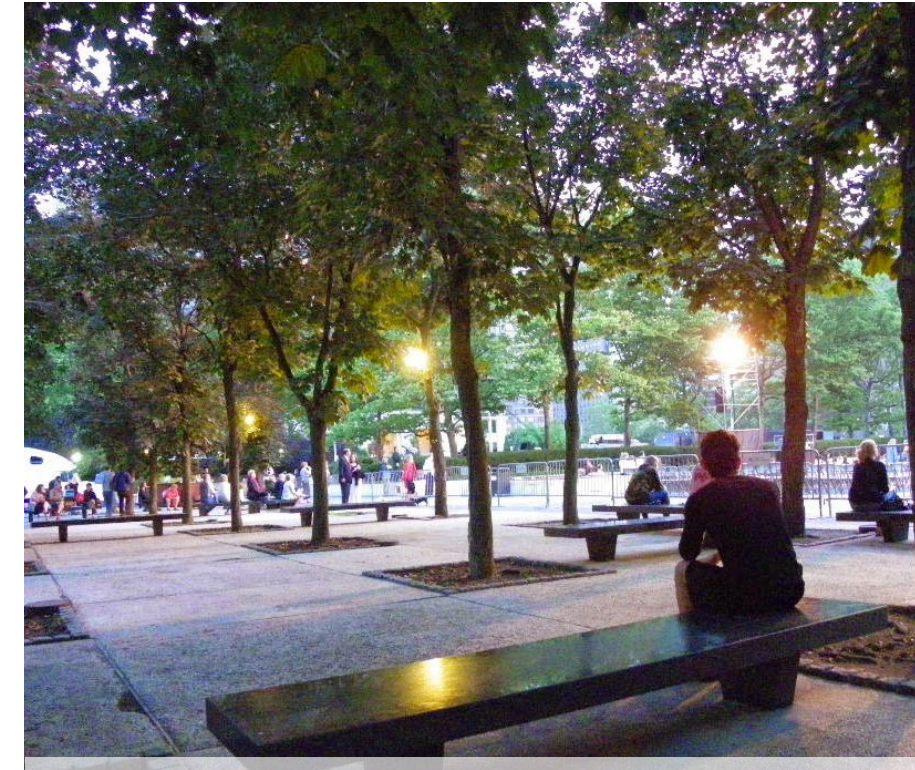
ENTRY AND PROMENADE



Entry bosque created transition between street and park



A grand promenade should have defined edges



Shaded seating areas with views to activities



Seating within trees and along promenade



Strong visual axis will promote circulation and wayfinding



Statement artistic signage, could say "ROC"

WATERFRONT PATHWAYS AND PLAZAS



Boardwalk river overlook, with lights and plantings



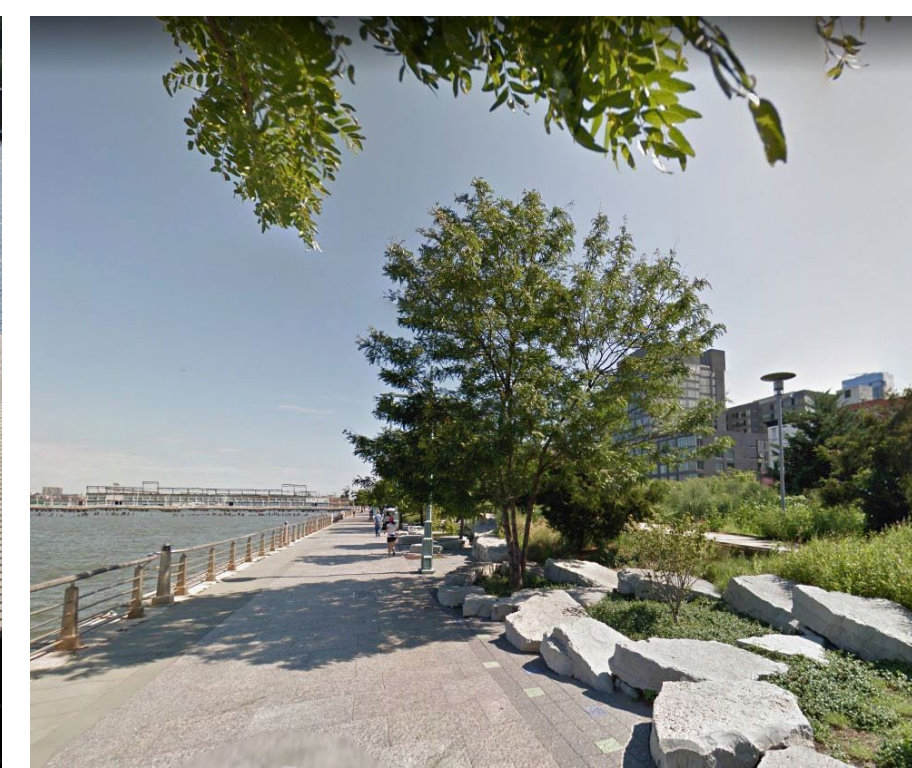
Waterfront seating and trails



Boardwalk promenade with lighting



Opportunities for river access, being close to water



Waterfront promenade with natural boulders



Family style seating, with open views to water

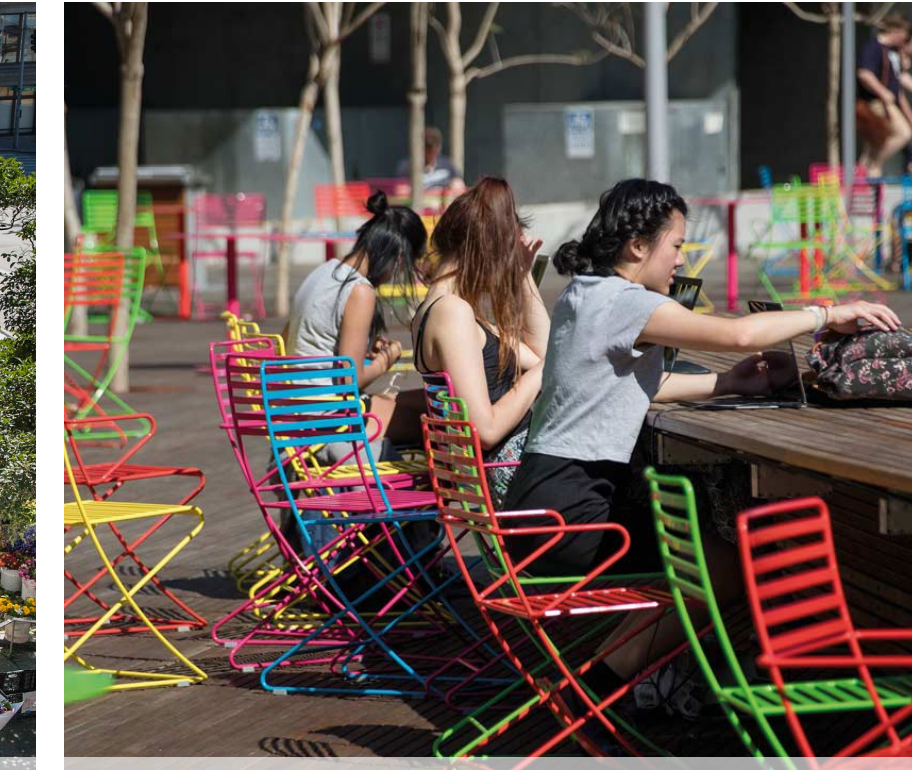
PLAZAS AND GATHERING AREAS



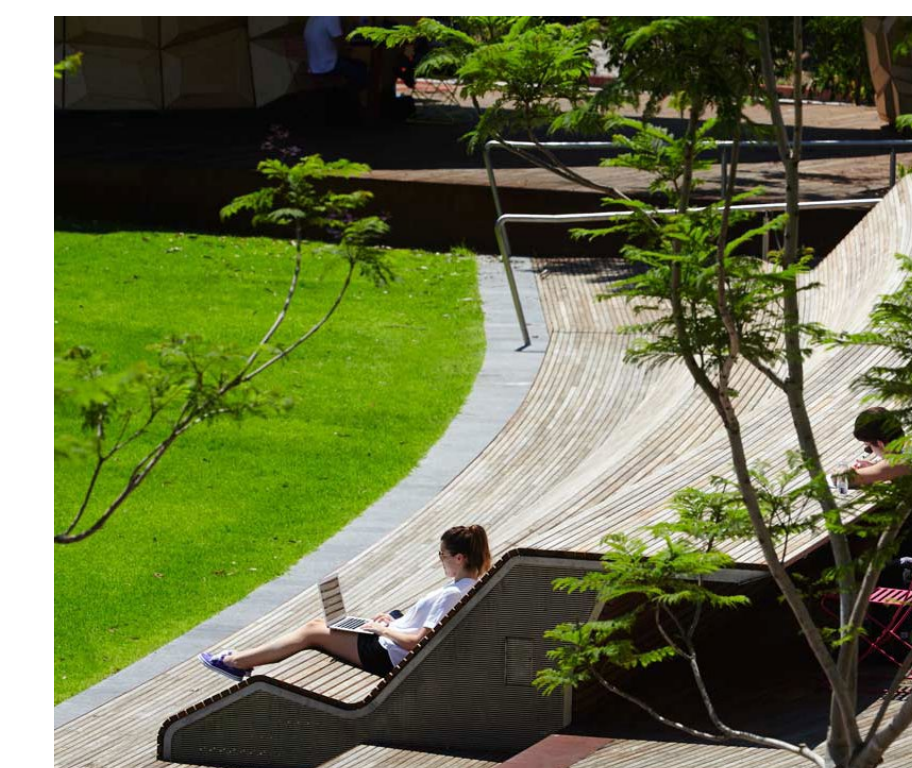
Open plaza with color and light, areas for food trucks



Spaces for market use



Fun, brightly colored seating



Lounging areas in the sun



Natural boulders as accent and seating



Picnic areas along pathways

PLAYGROUNDS AND PLAY FEATURES



Pole climbers on rubber mound create a visual statement



Sculptural mounds add play value and interest



Play should stimulate all the senses, including sound



Climbing equipment enhances motor skills



Colorful and varied topographic safety play surface



Traditional slides can be integrated into slopes

PLAYFUL WATER FEATURES



Simple water jets are popular and fun



Splash pads act as summer gathering spaces



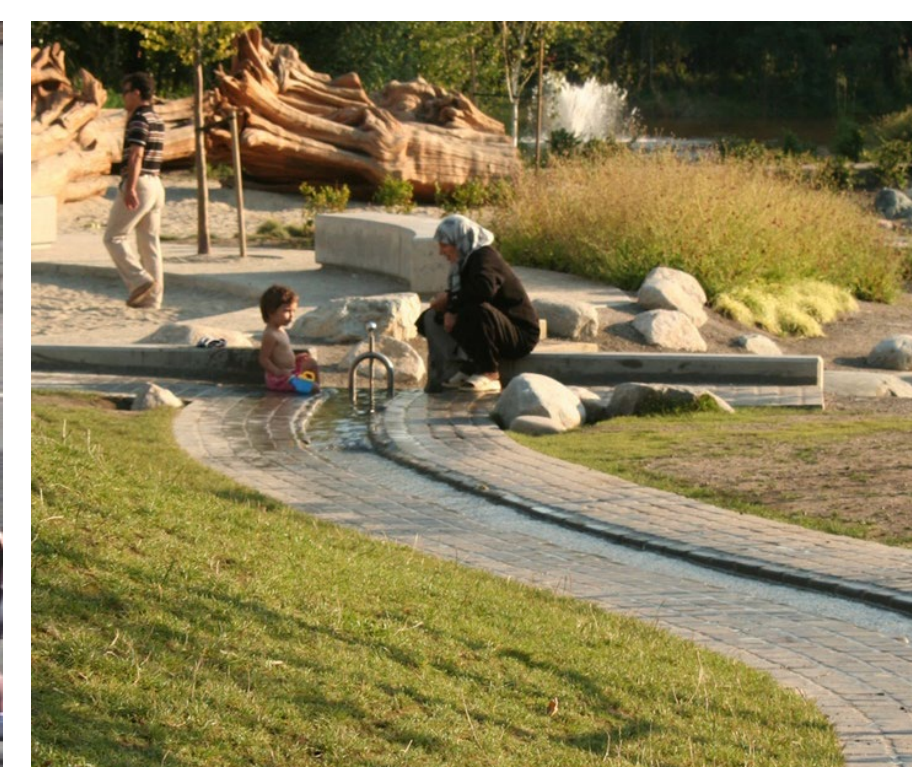
Some water features can be followed



Spray features can be sculptural (even off)



Simple mist spray and stones



Water features can be interactive

PLAYFUL RESTING AND CLIMBING



Rest can be playful, even for adults



Simple interventions can add play value for children



Rock scrambles can be playful and showcase views



Children and adults seek out challenges



Traditional play equipment can use topography



Everyday features can promote playful artistic culture