

WILLOW POND

SCREEN or IRON GRATE
OVER PIPE OPENING
INVERT EL. 355.92

CURRENT
WATER
LEVEL

TOP OF BANK

REMOVE EXISTING 6" STEEL PIPE,
BACKFILL & COMPACT EXCAVATED MATERIAL.

NEW 8" PVC SEWER PIPE

EXISTING 6" CLAY
PIPE TO BE CONNECTED
TO NEW MH WITH
NEW LENGTH OF
6" PIPE.

EXISTING
2x2 BRICK WELL
TO BE REMOVED

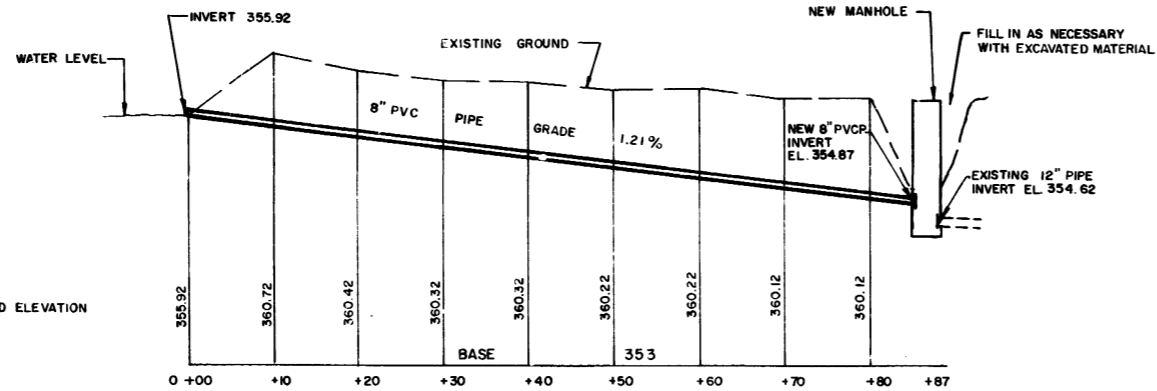
NEW
MANHOLE
0+87

CONNECT
EXISTING
(12" CLAY?)
PIPE TO NEW MH
NEW LENGTH
OF 12" PIPE NEEDED.

NOTE:
WATER LEVEL IN POND IS TO BE
LOWERED A MINIMUM OF 2 FT.
BEFORE INSTALLING PIPE.

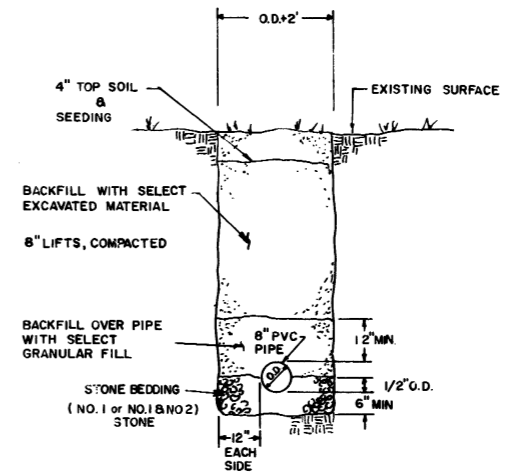
PLAN VIEW

NOT TO SCALE

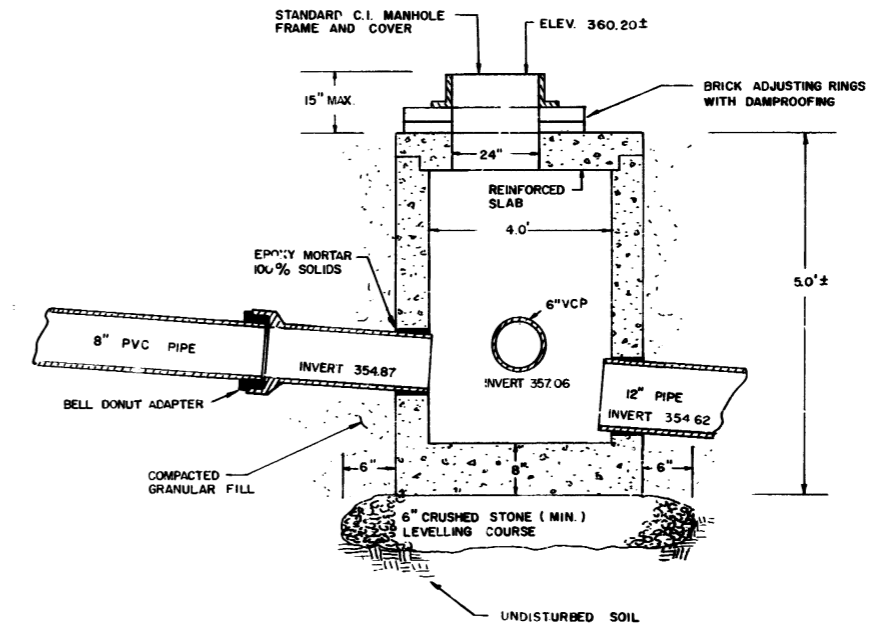


PROFILE

NOT TO SCALE



OVERFLOW PIPE TRENCH
DETAIL



PRECAST MANHOLE
DETAIL

Department of Environmental Services
Engineering Services
City of Rochester, New York

PROJECT TITLE
RIVERSIDE CEMETERY
WILLOW POND
OVERFLOW

ISSUED	CHECKED	DRAWN	DESIGN	FIELD BOOK	PROJECT NO.	NO	REVISIONS	BY	DATE

DRAWING TITLE
FILE NO. 3960 275 0000 000 01