



City of Rochester



LiRo Engineers, Inc.

LaBella Associates, PC



Ontario Specialty
Contracting, Inc.



Paradigm
Environmental Services, Inc.

PRESENTATION FOR Demolition & Site Preparation Midtown Rising **Rochester, New York**



July 2010

Introduction

Representatives:

Empire State Development Corporation

City of Rochester

LiRo Engineers, Inc.
(Construction Manager)

LaBella Associates, P.C.
(Design Consultant)

Ontario Specialty Contracting, Inc.
(Demolition Contractor)

Paradigm Environmental Services, Inc.
(Environmental Monitoring)



Project Background



Abatement Progress Summary

Citizens Bank, Sheer, Wendy's

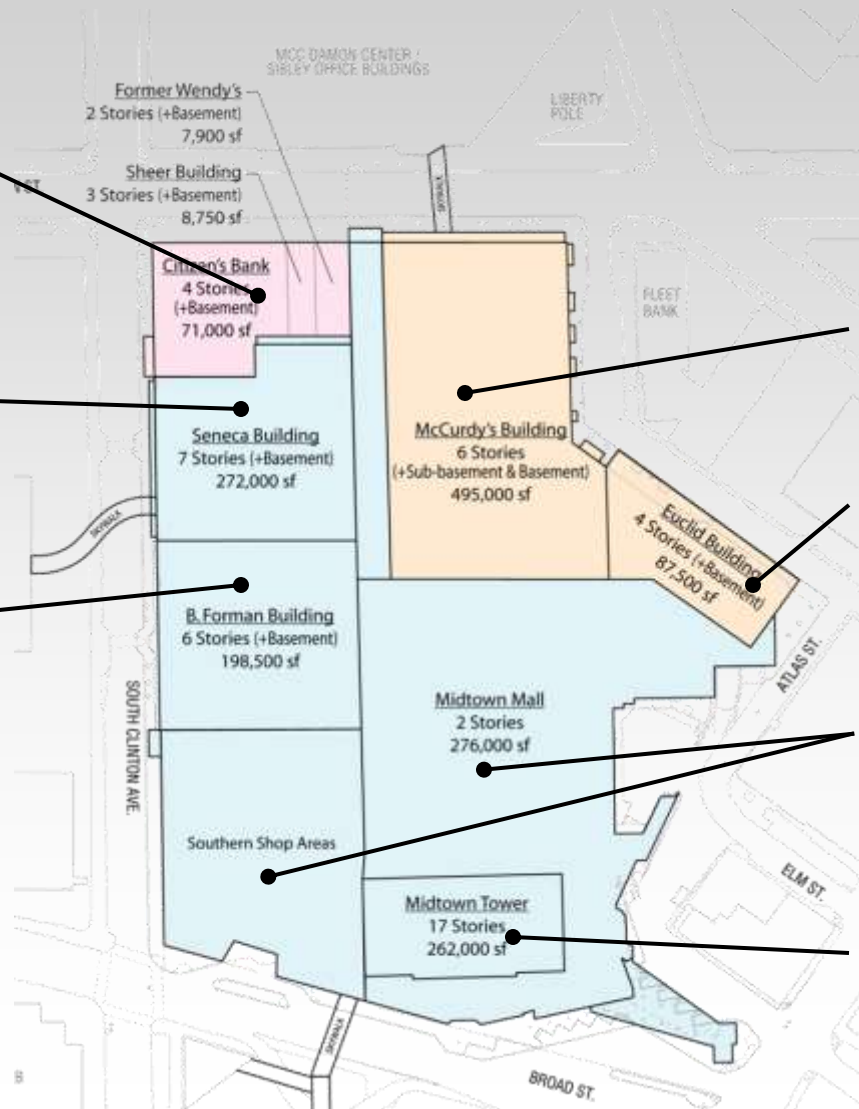
- Recently Acquired Properties
- Asbestos Abatement to Occur During Initial Phase I of the Demolition Contract

Seneca Building:

- Abatement Complete

B. Forman Building:

- Abatement Complete



McCurdy's Building:

- Abatement On-Going
- To be Complete 9/1/10

Euclid Building:

- Abatement On-Going
- To be Complete 9/1/10

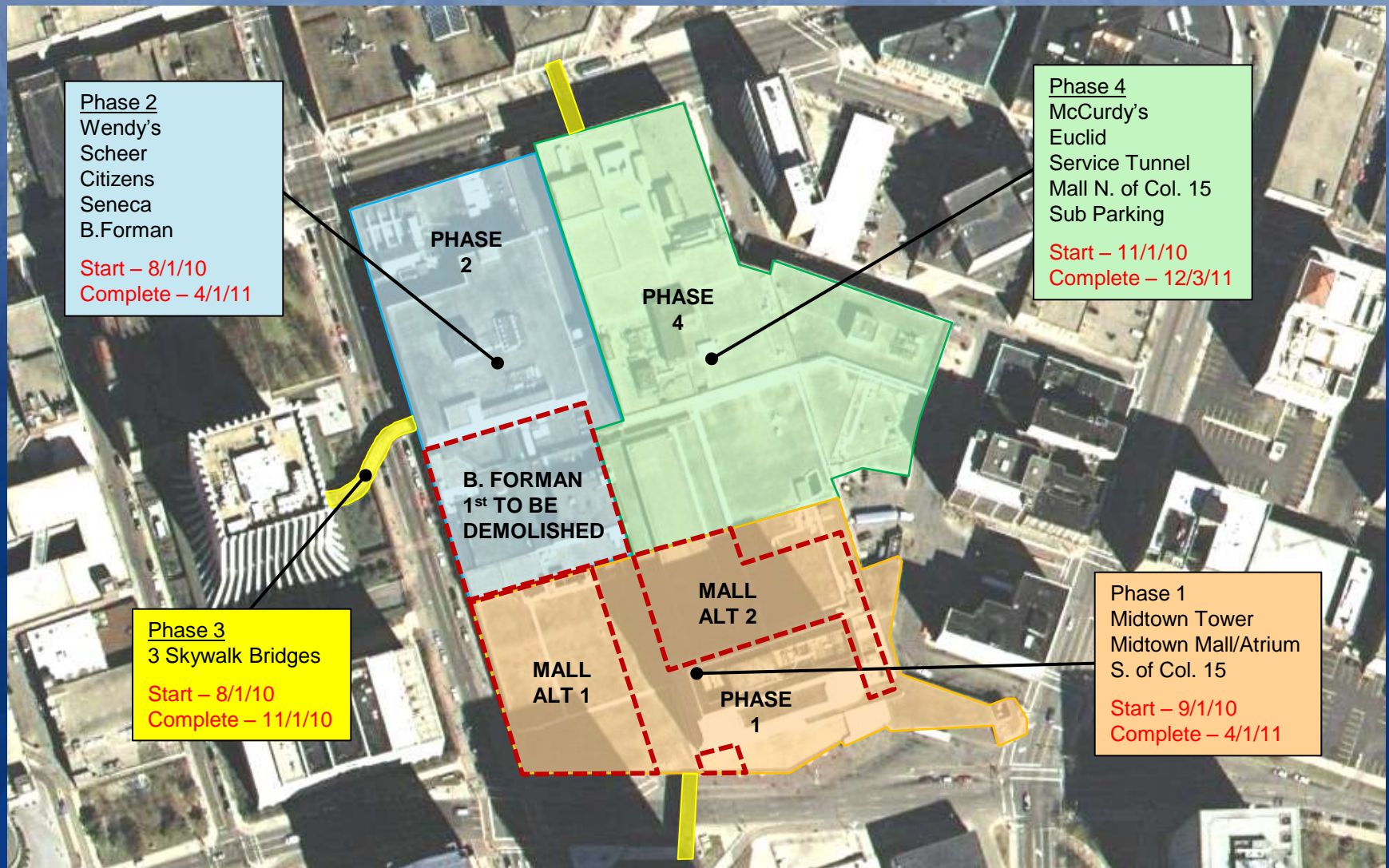
Mall Areas:

- Abatement Nearing Completion

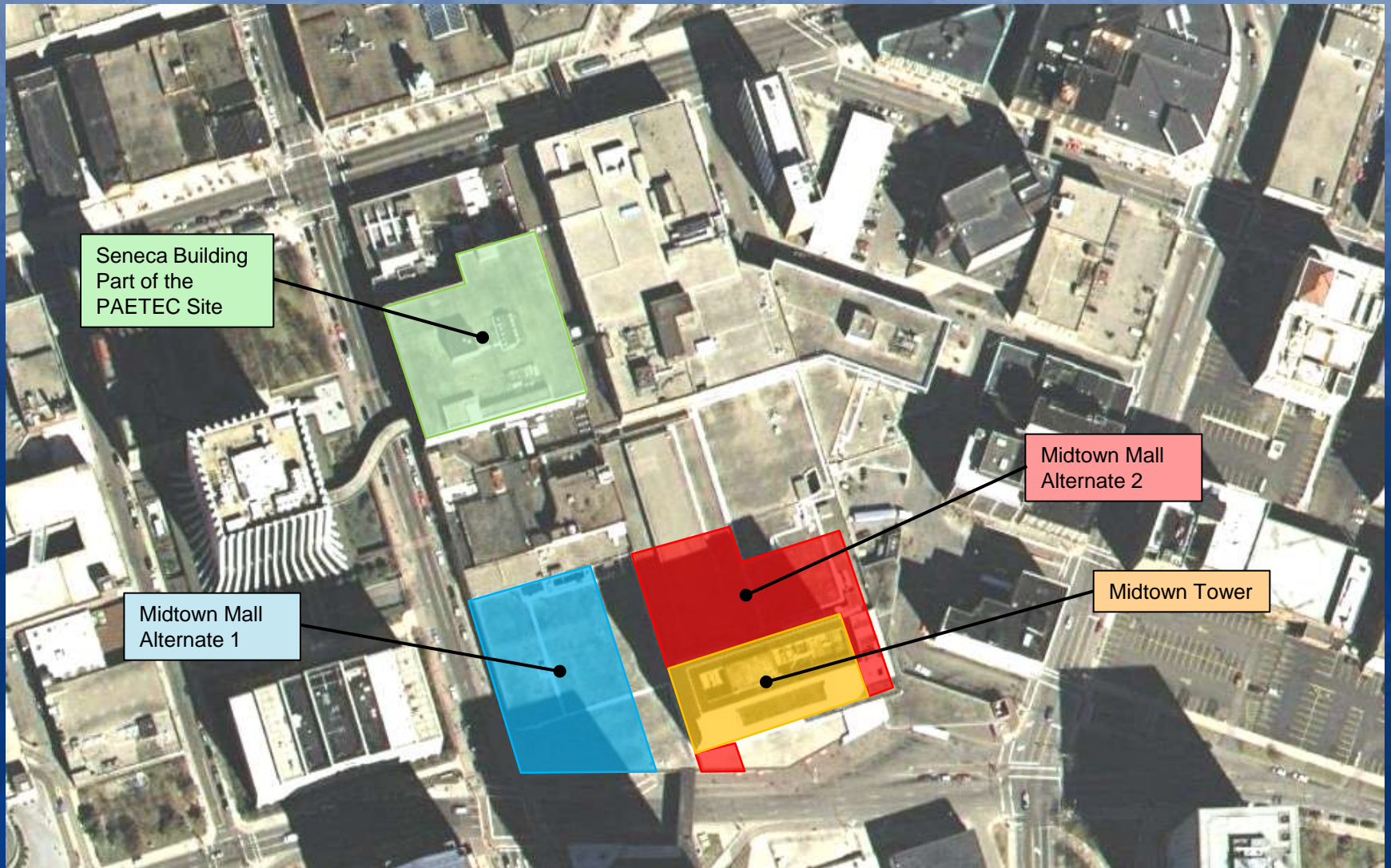
Tower:

- Abatement Nearing Completion

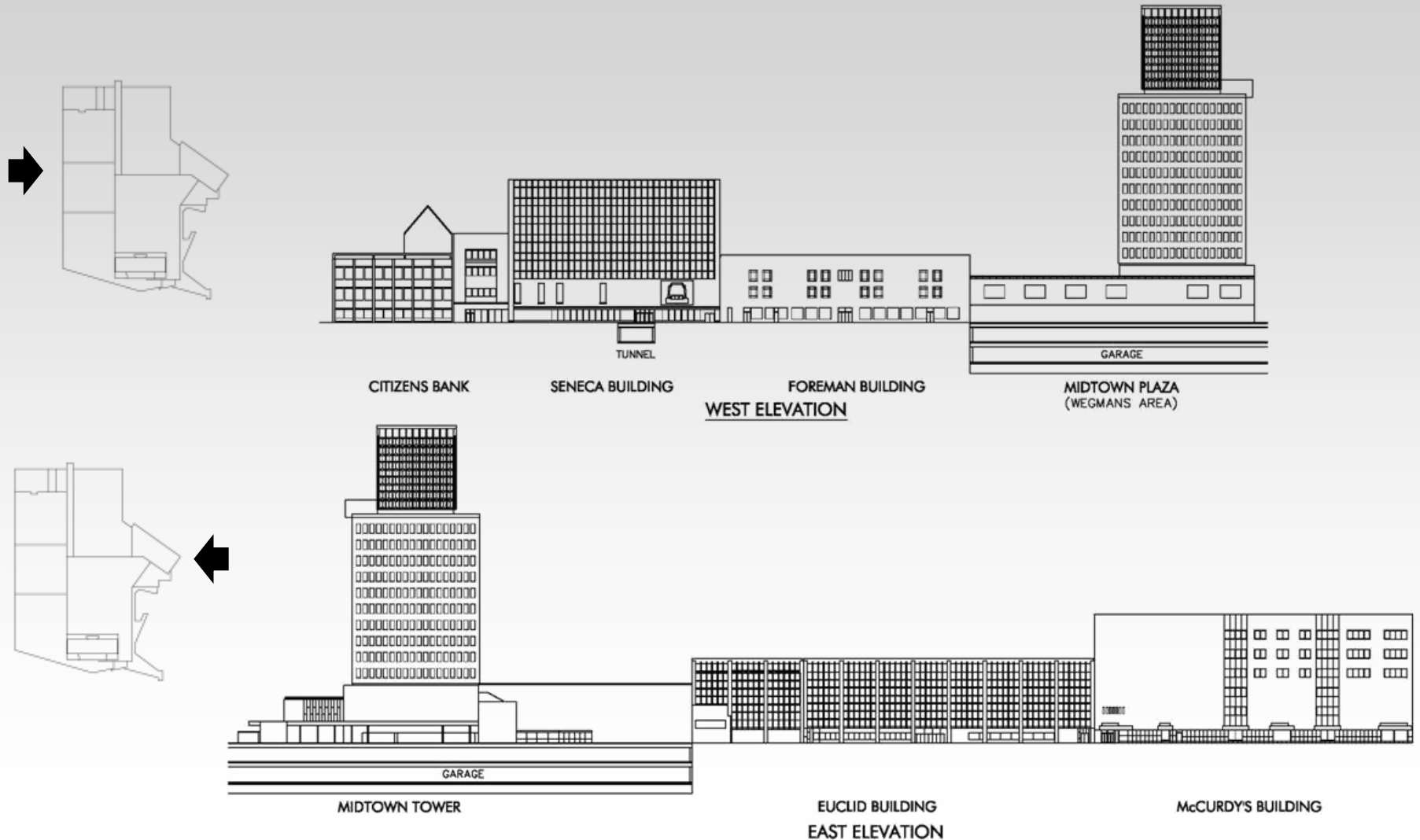
Demolition Phasing & Schedule



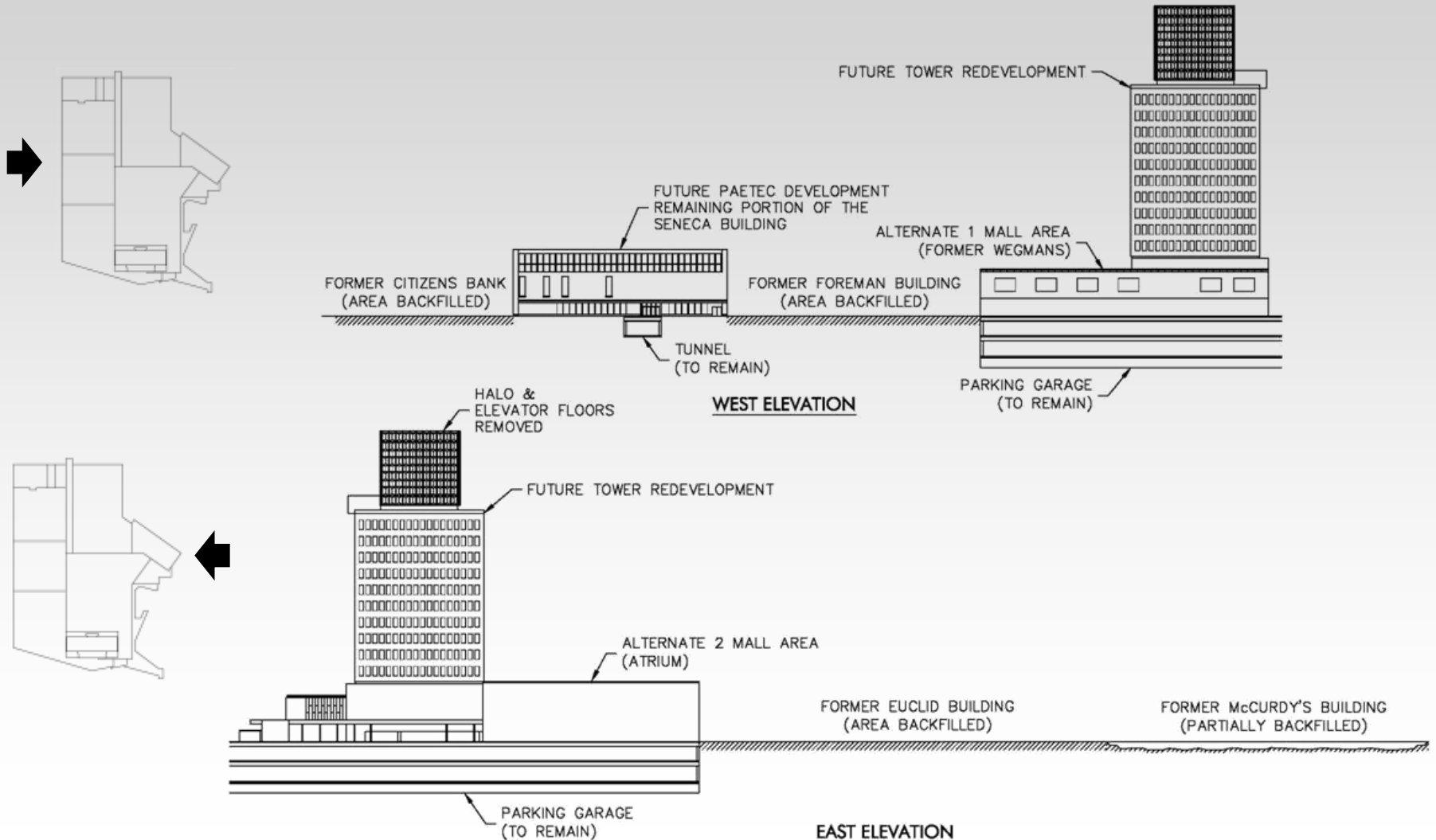
Reuse of Existing Structures



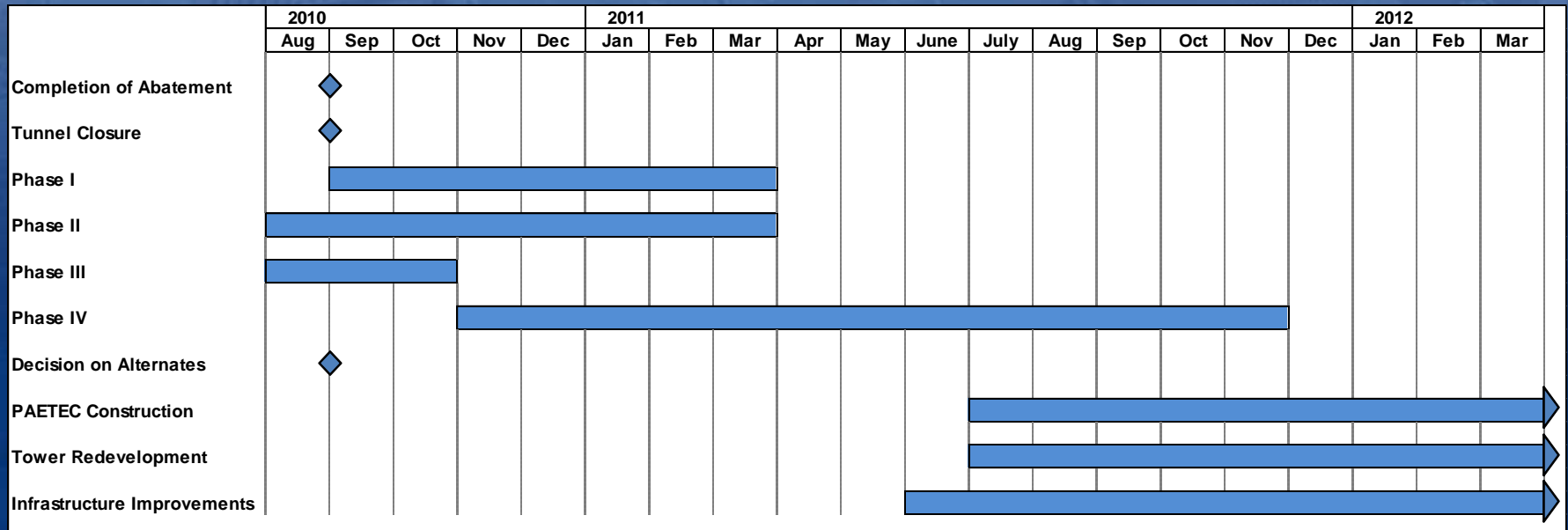
Pre-Demolition Conditions



Post-Demolition Conditions



Demolition Schedule



Demolition Procedures

What to Expect

- **Cranes**
- **Large Equipment**
- **Noise**
- **Dust**
- **Traffic Impacts**
- **Utility Work**
- **Sidewalk & Some Temporary Street Closures**
- **Bus Stop Relocation, Clinton Avenue (Permanent)**
- **Tunnel Restrictions**
- **Parking Garage Remains Closed**
- **Limited Abatement**
- **Tunnel Reconstruction**
- **Temporary Site Stabilization & Drainage Controls**



Demolition Procedures

Controls

- Health & Safety
- Dust & Air Monitoring
- Vibration Monitoring
- Project Perimeter & Fence
- Tunnel Open/Closure Procedures
- Communication with Neighbors

Regulatory Agencies

- NYSDOL
- OSHA
- NYSDEC
- USEPA



Contact Information



Katie Krawczyk
Upstate Director of Public Affairs
Empire State Development

Kkrawczyk@empire.state.ny.us

ESD Press Office: 800-260-7313

An aerial photograph of a city skyline, heavily obscured by a semi-transparent blue overlay. The buildings are visible as geometric shapes, with some showing distinct window patterns. The overall tone is cool and professional.

Question & Answer