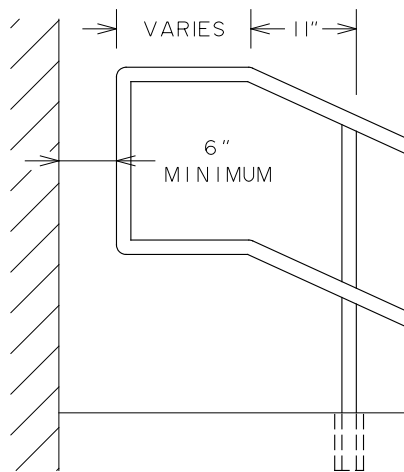
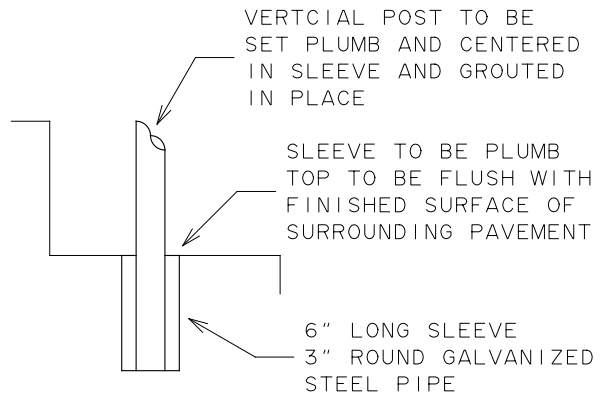


ELEVATION



AT BUILDING



VERTICAL POST SETTING DETAIL

NOTES:

1. HANDRAIL TO BE PROVIDED ON BOTH SIDES OF STAIRWAY.
2. HANDRAIL EXTENSIONS ARE NOT TO PROTRUDE INTO USABLE ACCESSIBLE WIDTH OF ADJOINING SIDEWALK.
3. MINIMUM CLEAR SPACE BETWEEN INSIDE OF HANDRAILS IS TO BE 3 FEET FOR 1 AND 2 FAMILY RESIDENCES, 4 FEET FOR BUILDINGS OTHER THAN 1 AND 2 FAMILY RESIDENCES.
4. GRIPPING SURFACES OF HANDRAIL TO BE SMOOTH, FREE OF SHARP OR ABRASIVE ELEMENTS.
5. ALL VERTICAL POST CONNECTIONS TO BE WELDED ALL AROUND.
6. SEE DETAILS S608-34 AND S608-35 FOR STEP DETAILS.

CITY OF ROCHESTER		
HANDRAIL		
ISSUED	6-1-18	NON-STANDARD DWG.NO.S615-4
REVISED		