

# CITY OF ROCHESTER

## DEPARTMENT OF ENVIRONMENTAL SERVICES



### STREET IMPROVEMENT PROGRAM

# RESIDENTIAL CURB RAMPS - CULVER ROAD EAST TO CITY LINE

PROJECT BOUNDARIES  
WEST TO EAST: CULVER RD TO CITY LINE  
NORTH TO SOUTH: BAY ST TO E. MAIN ST

PN 19106

PRELIMINARY PLANS  
DECEMBER 21, 2018

NORMAN H. JONES  
COMMISSIONER  
DEPARTMENT OF ENVIRONMENTAL SERVICES  
CITY OF ROCHESTER

DATE

HOLLY E. BARRETT, P.E.  
INTERIM CITY ENGINEER  
CITY OF ROCHESTER

DATE

PATRICK O'CONNOR, P.E.  
DIRECTOR  
BUREAU OF WATER  
CITY OF ROCHESTER

DATE

RESIDENTIAL CURB RAMPS  
CULVER ROAD EAST TO CITY LINE  
PN 19106



GENERAL

- ACCESS ELEMENTS ARE TO BE CONSTRUCTED IN ACCORDANCE WITH "PROPOSED GUIDELINES FOR PEDESTRIAN FACILITIES IN THE PUBLIC RIGHT-OF-WAY (PROWAG)". FOLLOWING NOTES REITERATE OR AMEND REQUIREMENTS OUTLINED IN "PROPOSED GUIDELINES FOR PEDESTRIAN FACILITIES IN THE PUBLIC RIGHT-OF-WAY (PROWAG)" AND NYSDOT "HIGHWAY DESIGN MANUAL - CHAPTER 18 PEDESTRIAN FACILITY DESIGN". SEE BOTH DOCUMENTS FOR FURTHER INFORMATION, CLARIFICATION OR GUIDANCE AS NEEDED.
- DESIGN TOLERANCES FOR DIMENSIONS, GRADES (RUNNING SLOPE) AND CROSS SLOPES SHOWN IN CONTRACT DOCUMENTS ARE MINIMUM AND MAXIMUM LIMITS FOR DESIGN AND FIELD LAYOUT OF ACCESSIBLE ELEMENTS. ACCESSIBLE ELEMENTS ARE NOT TO BE CONSTRUCTED WITH VALUES OUTSIDE LIMITS PER ACCESSIBILITY GUIDELINES AND FOR WORK ACCEPTANCE.
- FOR PEDESTRIAN ACCESS, SIDEWALKS ARE TO HAVE MINIMUM CLEAR WIDTH OF 5 FEET, WHEREAS ACCESSIBILITY GUIDELINES REQUIRE MINIMUM CLEAR WIDTH OF 4 FEET. WIDTH OF SIDEWALK IS MEASURED FROM BACK EDGE OF CURB OR CONCRETE GUTTER. SIDEWALK SURFACE, GRADE AND CROSS SLOPE ARE TO BE MAINTAINED ACROSS DRIVEWAYS. WHERE SIDEWALK IS LESS THAN 5 FEET WIDE, PASSING SPACES ARE TO BE PROVIDED AT MAXIMUM INTERVALS OF 200 FEET. DRIVEWAYS THAT MEET CROSS SLOPE REQUIREMENTS ARE ACCEPTABLE FOR USE AS PASSING SPACE.
- SIDEWALK CROSS SLOPE IS TO BE 1.50% MAXIMUM FOR DESIGN AND FIELD LAYOUT, 2% MAXIMUM PER ACCESSIBILITY GUIDELINES AND FOR WORK ACCEPTANCE.
- SIDEWALK AND PEDESTRIAN STREET CROSSINGS ARE TO INCLUDE MINIMUM 4 FEET WIDE REDUCED VIBRATION ZONE, TO MINIMIZE PAINFUL VIBRATION THAT PERSONS USING WHEELED MOBILITY AIDS MAY EXPERIENCE WHEN TRAVERSING ROUGH AND UNEVEN SURFACES. REDUCED VIBRATION ZONE IS TO BE FREE OF ROUGH AND UNEVEN SURFACE FEATURES, i.e.: EXPOSED AGGREGATE, PAVERS WITH ROUNDED EDGES, PAVERS WITH CHAMFERED EDGES GREATER THAN 1/4 INCH, COBBLESTONES, DECORATIVE PATTERNING MATERIALS AND SURFACE IMPRINTS WIDER AND DEEPER THAN 1/4 INCH, AND ANY OTHER TYPE OF ROUGH, UNEVEN OR JOINTED SURFACES. ACCEPTABLE REDUCED VIBRATION SURFACES INCLUDE CONCRETE, ASPHALT, SQUARED EDGE PAVERS, PAVERS WITH CHAMFERED EDGES LESS THAN 1/4 INCH, DECORATIVE PATTERNING MATERIALS AND SURFACE IMPRINTS LESS THAN 1/4 INCH WIDE AND DEEP.
- TO CHECK FIELD LAYOUT AND TO VERIFY WORK ACCEPTANCE, ALL GRADES (RUNNING SLOPES) AND CROSS SLOPES ARE TO BE MEASURED WITH 4 FOOT LONG DIGITAL LEVEL USING AT LEAST TWO READINGS. WHERE READINGS VARY MEASUREMENTS ARE TO BE AVERAGED. GRADES (RUNNING SLOPES) ARE TO BE MEASURED IN DIRECTION OF PEDESTRIAN TRAVEL ALONG CENTERLINE AND ON 12 INCH AND 18 INCH OFFSETS FROM CENTERLINE. CROSS SLOPES ARE TO BE MEASURED PERPENDICULAR TO DIRECTION OF PEDESTRIAN TRAVEL AT 5 FOOT INTERVALS.
- JOINTS BETWEEN SIDEWALK FLAGS, ACCESS RAMPS, BLENDED TRANSITIONS, TURNING SPACES AND STREETS ARE TO BE FLUSH AND FREE FROM ABRUPT VERTICAL SEPARATIONS GREATER THAN 1/4 INCH. VERTICAL CHANGES BETWEEN 1/4 INCH AND 1/2 INCH ARE TO BE BEVELED ACROSS ENTIRE JOINT WITH STANDARD BEVEL SLOPE OF 1:3, BUT NO STEEPER THAN 1:2. VERTICAL SEPARATIONS GREATER THAN 1/2 INCH ARE UNACCEPTABLE, REQUIRING TOTAL REPLACEMENT.

ACCESSIBLE CONNECTION - ACCESS RAMP AND BLENDED TRANSITION

- ACCESS RAMP AND BLENDED TRANSITION ARE ACCESSIBLE CONNECTIONS BETWEEN SIDEWALK AND STREET. ACCESS RAMP IS DEFINED AS CONNECTION THAT HAS GRADE (RUNNING SLOPE) GREATER THAN 5%. BLENDED TRANSITION IS DEFINED AS CONNECTION THAT HAS MAXIMUM GRADE (RUNNING SLOPE) OF 5%.
- ACCESS RAMPS AND BLENDED TRANSITIONS ARE TO BE MINIMUM 4 FEET WIDE PER ACCESSIBILITY GUIDELINES.
- ACCESS RAMP AND BLENDED TRANSITION CROSS SLOPE IS TO BE AS FLAT AS PRACTICAL WHILE STILL PROVIDING POSITIVE DRAINAGE. CROSS SLOPE IS TO BE 1.50% MAXIMUM FOR DESIGN AND FIELD LAYOUT, 2% MAXIMUM PER ACCESSIBILITY GUIDELINES AND FOR WORK ACCEPTANCE.
- WHERE ACCESS RAMP OR BLENDED TRANSITION ENCROACHES INTO SIDEWALK, CROSS SLOPE OF SIDE FLARES IS TO BE 9.50% MAXIMUM FOR DESIGN AND FIELD LAYOUT, 10% MAXIMUM PER ACCESSIBILITY GUIDELINES AND FOR WORK ACCEPTANCE, AS MEASURED PARALLEL TO STREET.
- GRADE (RUNNING SLOPE) OF ACCESS RAMP IS TO BE 7.50% MAXIMUM FOR DESIGN AND FIELD LAYOUT, 8.30% MAXIMUM PER ACCESSIBILITY GUIDELINES AND FOR WORK ACCEPTANCE.
- WHERE EXISTING CONDITIONS CANNOT BE OVERCOME TO ACCOMMODATE 8.30% MAXIMUM GRADE (RUNNING SLOPE) FOR ACCESS RAMP, LENGTH OF ACCESS RAMP CAN BE EXTENDED UP TO MAXIMUM LENGTH OF 15 FEET.
- AT STREET CORNERS WITH DUAL PEDESTRIAN STREET CROSSINGS, SEPARATE ACCESS RAMPS OR BLENDED TRANSITIONS ARE TO BE PROVIDED FOR EACH PEDESTRIAN STREET CROSSING, ORIENTED IN DIRECTION OF PEDESTRIAN TRAVEL. WHERE EXISTING CONDITIONS CANNOT BE OVERCOME TO ACCOMMODATE SEPARATE ACCESS RAMPS OR BLENDED TRANSITIONS, SINGLE DIAGONAL ACCESS RAMP OR BLENDED TRANSITION MAY BE PERMITTED THAT IS ORIENTED TO SERVE BOTH PEDESTRIAN STREET CROSSINGS.
- AT T-INTERSECTION, IT IS ONLY NECESSARY TO PROVIDE SINGLE PEDESTRIAN STREET CROSSING FOR THROUGH STREET FROM EITHER CORNER OF INTERSECTING STREET.

TURNING SPACE AND CLEAR SPACE

- TURNING SPACE IS DEFINED AS AN AREA AT TOP OF ACCESS RAMP OR BLENDED TRANSITION TO CHANGE DIRECTION FROM SIDEWALK INTO ACCESS RAMP OR BLENDED TRANSITION. CLEAR SPACE IS DEFINED AS AN AREA BEYOND BOTTOM GRADE BREAK THAT IS WITHIN WIDTH OF PEDESTRIAN STREET CROSSING, THAT IS TO BE KEPT CLEAR OF ANY IMPEDIMENT THAT MAY INTERFERE WITH ACCESS FOR PERSONS WITH DISABILITIES. TURNING SPACE MAY ALSO BE LOCATED AT BOTTOM OF ACCESS RAMP OR BLENDED TRANSITION, AND CAN OVERLAP CLEAR SPACE.
- WHERE THERE ARE NO VERTICAL CONSTRAINTS AT BACK OF SIDEWALK, (E.G. STRUCTURES, FENCES, WALLS, CURB, ET CETERA), TURNING SPACE IS TO BE MINIMUM OF 4 FEET x 4 FEET. WHERE THERE ARE VERTICAL CONSTRAINTS, TURNING SPACE IS TO BE MINIMUM OF 4 FEET x 5 FEET, WITH 5 FEET DIMENSION BEING PERPENDICULAR TO CONSTRAINT.
- CROSS SLOPE OF TURNING SPACE IS TO BE AS FLAT AS PRACTICAL WHILE STILL PROVIDING POSITIVE DRAINAGE. CROSS SLOPE IS TO BE 1.50% MAXIMUM FOR DESIGN AND FIELD LAYOUT, 2% MAXIMUM PER ACCESSIBILITY GUIDELINES AND FOR WORK ACCEPTANCE.
- CLEAR SPACE IS TO BE MINIMUM OF 4 FEET x 4 FEET.

DETECTABLE WARNING SURFACE

- DETECTABLE WARNING SURFACE IS TO BE MINIMUM OF 24 INCHES DEEP SITUATED IN PREDOMINANT DIRECTION OF PEDESTRIAN TRAFFIC, AND EXTEND ACROSS FULL WIDTH OF ACCESS RAMP, BLENDED TRANSITION, OR FLUSH SURFACE, EXCLUDING SIDE FLARES.
- DETECTABLE WARNING SURFACE IS TO BE PROVIDED AT FOLLOWING LOCATIONS:

ACCESS RAMPS, BLENDED TRANSITIONS AND FLUSH SURFACES AT PEDESTRIAN STREET CROSSINGS

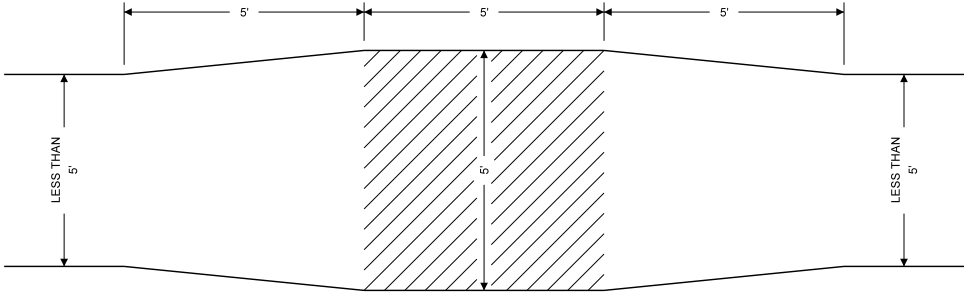
BOTH SIDES OF STREET MEDIANS AND PEDESTRIAN REFUGE ISLANDS, AND WHERE SIDEWALK IS MINIMUM 6 FEET LONG

BOTH SIDES OF STREET INTERSECTION STYLE DRIVEWAY OPENING

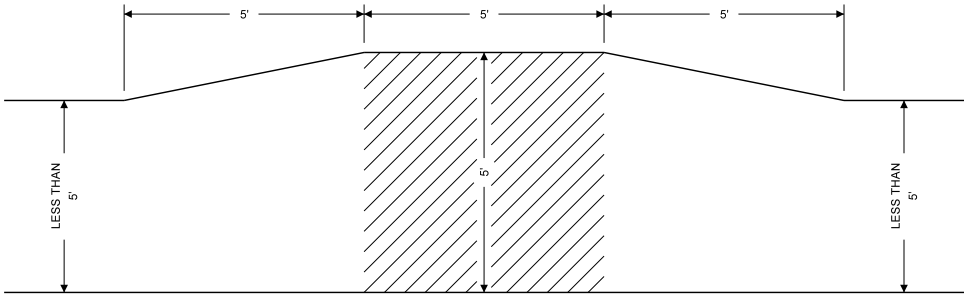
BOTH SIDES OF DRIVEWAY OPENING THAT IS CONTROLLED BY STOP SIGN OR TRAFFIC SIGNAL
- DETECTABLE WARNING SURFACE IS TO PROVIDE LIGHT-ON-DARK OR DARK-ON-LIGHT CONTRAST WITH SURROUNDING SURFACE. DEFAULT COLOR FOR DETECTABLE WARNING SURFACE IS #33538 TRAFFIC YELLOW. OTHER ACCEPTABLE COLORS FOR USE IN CONCRETE AREAS #20109 RED BROWN AND #36081 DARK GUNSHIP GRAY; IN ASPHALT AND OTHER SIMILAR DARK SURFACE AREAS #36495 LIGHT GRAY AND #37925 INSIGNIA WHITE; OR APPROVED EQUIVALENTS. COLORS ARE TO BE IN ACCORDANCE WITH FEDERAL STANDARD 595C.
- ROWS OF TRUNCATED DOMES ARE TO BE ALIGNED PERPENDICULAR OR RADIAL TO LOWER GRADE BREAK ON ACCESS RAMPS AND BLENDED TRANSITIONS WITH GRADE (RUNNING SLOPE) OF 5% OR GREATER. WHERE DETECTABLE WARNING DOMES ARE ARRAYED RADIALLY TRUNCATED DOMES MAY DIFFER IN DIAMETER AND CENTER-TO-CENTER SPACING. WHERE GRADE (RUNNING SLOPE) IS LESS THAN 5%, ORIENTATION IS LESS CRITICAL AND TRUNCATED DOMES MAY DIFFER FROM PERPENDICULAR OR RADIAL ALIGNMENT TO LOWER GRADE BREAK.

ELEMENT TOLERANCES

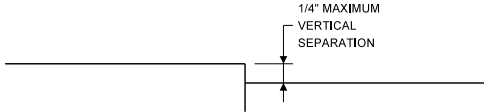
ELEMENT	DESIGN AND FIELD LAYOUT	ACCESSIBILITY GUIDELINES AND WORK ACCEPTANCE
SIDEWALK CROSS SLOPE	1.50% MAXIMUM	2% MAXIMUM
TURNING SPACE CROSS SLOPE	1.50% MAXIMUM	2% MAXIMUM
ACCESS RAMP CROSS SLOPE	1.50% MAXIMUM	2% MAXIMUM
BLENDED TRANSITION CROSS SLOPE	1.50% MAXIMUM	2% MAXIMUM
SIDE FLARE CROSS SLOPE (WHERE SIDE FLARE ENCROACHES INTO PAVED AREA)	9.50% MAXIMUM	10% MAXIMUM
SIDE FLARE CROSS SLOPE (WHERE SIDE FLARE ABUTS LAWN AREA)	20% MAXIMUM	20% MAXIMUM
ACCESS RAMP GRADE (RUNNING SLOPE)	7.50% MAXIMUM	8.30% MAXIMUM
BLENDED TRANSITION GRADE (RUNNING SLOPE)	4.50% MAXIMUM	5% MAXIMUM



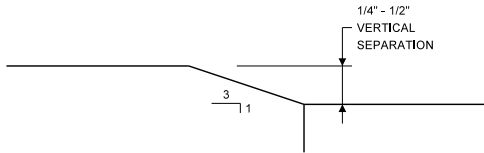
SIDEWALK  
ACCESSIBLE PASSING SPACE  
TWO SIDED TAPER



SIDEWALK  
ACCESSIBLE PASSING SPACE  
ONE SIDED TAPER



MAXIMUM ACCEPTABLE  
VERTICAL SURFACE SEPARATION



BEVELED  
VERTICAL SURFACE SEPARATION

THIS IS A GENERIC  
DRAWING AND EVERYTHING  
DEPICTED HEREON MAY NOT  
NECESSARILY PERTAIN TO  
THIS PROJECT

SEED FILE DATE  
OCTOBER 29, 2018

Department of Environmental Services  
Architecture and Engineering Services  
City of Rochester, New York

ASSISTANT MANAGER OF STREET DESIGN  
INTERIM CITY ENGINEER

LISA Y. REYES  
HOLLY E. BARRETT, P.E.

PROJECT TITLE

STREET  
IMPROVEMENT PROGRAM  
RESIDENTIAL CURB RAMPS  
CULVER RD EAST TO CITY LINE

ISSUED	CHECKED	DRAWN	DESIGN	SCALE	PROJECT NUMBER	NO.	REVISION	BY	DATE
12/21/2018	L. REYES	K. BATZ	F. BONN, PE	NONE	19106				

DRAWING TITLE

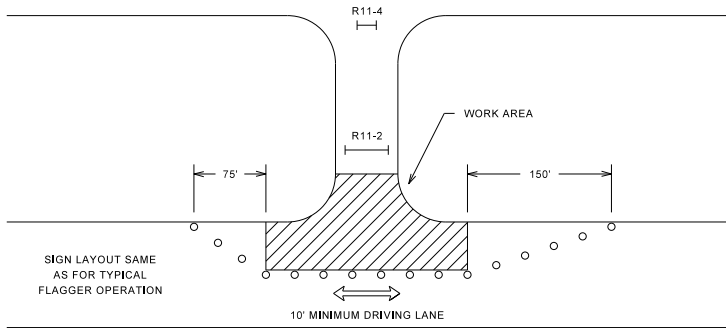
PEDESTRIAN  
ACCESSIBILITY  
GUIDELINES

DRAWING NO.

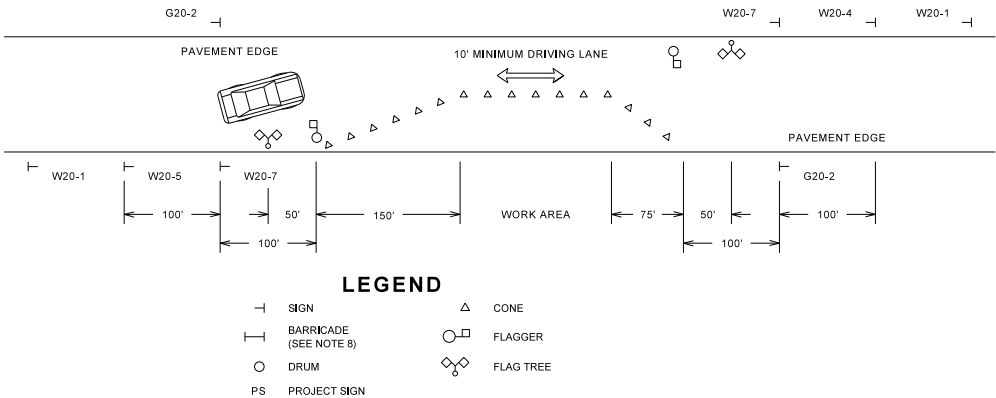
3

OF

TYPICAL SIGNING  
INTERSECTION RECONSTRUCTION AREA

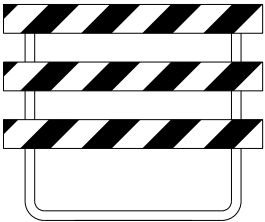


TYPICAL FLAGGER OPERATION



LEGEND

- SIGN  
— BARRICADE (SEE NOTE 8)  
O DRUM  
PS PROJECT SIGN
- △ CONE  
○ FLAGGER  
◇ FLAG TREE



TYPE III PVC CONSTRUCTION BARRICADE  
( STRIPES ARE TO SLOPE DOWNWARD IN  
DIRECTION TRAFFIC IS TO PASS )



DRUM



CONE

NOTES:

- CONTRACTOR IS REQUIRED TO PROVIDE AND MAINTAIN ALL TRAFFIC CONTROL DEVICES IN ACCORDANCE WITH PLANS, NATIONAL MANUAL OF UNIFORM TRAFFIC CONTROL DEVICES AND NYSDOT SUPPLEMENT, NYSDOT WORK ZONE TRAFFIC CONTROL STANDARD SHEETS (US CUSTOMARY) LATEST EDITION, AND CITY OF ROCHESTER SPECIFICATIONS. ALL AS APPROVED BY MONROE COUNTY DIRECTOR OF TRANSPORTATION. REFERENCES TO "REGIONAL DIRECTOR" IN NYSDOT STANDARD SHEETS ARE TO BE INTERPRETED AS "CITY OF ROCHESTER".
- NO WORK IS TO OCCUR ON STREETS THAT ARE DESIGNATED AS ARTERIALS AND COLLECTORS DURING PEAK RUSH HOURS OF 7AM TO 9AM AND 4PM TO 6PM, UNLESS SPECIFICALLY AUTHORIZED BY CITY ENGINEER. THESE STREETS ARE TO REMAIN OPEN AND FULLY ACCESSIBLE DURING AT ALL TIMES TO MAINTAIN ADEQUATE VEHICULAR TRAFFIC FLOW.
- ALL SIGNS AS SHOWN ON DRAWING(S) AND AS ORDERED BY PROJECT MANAGER ARE TO BE IN PLACE IMMEDIATELY PRIOR TO COMMENCING WORK.
- DULY TRAINED FLAGGER(S) ARE TO BE PROVIDED DURING WORKING HOURS TO PROTECT TRAFFIC AT ALL TIMES AND TO PROVIDE ADEQUATE TRAFFIC CONTROL.
- ONE-WAY AND TWO-WAY TRAFFIC IS TO BE MAINTAINED AT ALL TIMES IN ACCORDANCE WITH REQUIREMENTS OF SECTION R619.
- TO MAINTAIN TRAFFIC IN TWO LANES WHEN CONTRACTOR IS NOT WORKING, ALL OPEN EXCAVATIONS WITHIN ROADWAY ARE TO BE COVERED WITH METAL PLATES, OR OTHERWISE DELINEATED, AS ORDERED BY PROJECT MANAGER.
- CONTRACTOR IS TO PROVIDE AND MAINTAIN AT ALL TIMES SAFE AND ADEQUATE INGRESS AND EGRESS TO AND FROM ALL INTERSECTING STREETS, BUILDINGS AND DRIVEWAYS. ACCESS MAY BE RESTRICTED DURING WORKING HOURS, AS CONSTRUCTION ACTIVITIES DICTATE.
- ALL EXISTING TRAFFIC AND PARKING SIGNS ARE TO BE MAINTAINED BY CONTRACTOR THROUGHOUT CONSTRUCTION OF PROJECT. CONTRACTOR IS TO COVER OR REMOVE ONLY THOSE EXISTING TRAFFIC AND PARKING SIGNS WHICH CONFLICT WITH VARIOUS ACCESS AND TRAFFIC RESTRICTIONS THAT WILL BE UTILIZED DURING CONSTRUCTION OF PROJECT. CONTRACTOR MUST CONTACT MCDOT DISPATCHER AT 1-800-753-7750 AT LEAST 5 WORKING DAYS PRIOR TO REMOVING OR RESETTING ANY TRAFFIC AND PARKING REGULATION SIGNS.

TRAFFIC CONTROL DEVICES

END  
ROAD WORK

G20-2

SIDEWALK  
CLOSED

R9-9

SIDEWALK CLOSED  
← USE OTHER SIDE  
→ SIDEWALK CLOSED  
USE OTHER SIDE

R9-10

ROAD  
CLOSED

R11-2

ROAD CLOSED  
TO  
THRU TRAFFIC

R11-4

GROOVED  
PAVEMENT

W8-15

ROAD  
WORK  
AHEAD

W20-1

ONE LANE  
ROAD  
000 FT

W20-4

RIGHT LANE  
CLOSED  
AHEAD

W20-5

ROAD CLOSED  
TO  
THRU TRAFFIC

W20-7

THIS IS A GENERIC  
DRAWING AND EVERYTHING  
DEPICTED HEREON MAY NOT  
NECESSARILY PERTAIN TO  
THIS PROJECT

SEED FILE DATE OCTOBER 29, 2018

Department of Environmental Services  
Architecture and Engineering Services  
City of Rochester, New York

ASSISTANT MANAGER OF STREET DESIGN LISA Y. REYES  
INTERIM CITY ENGINEER HOLLY E. BARRETT, P.E.

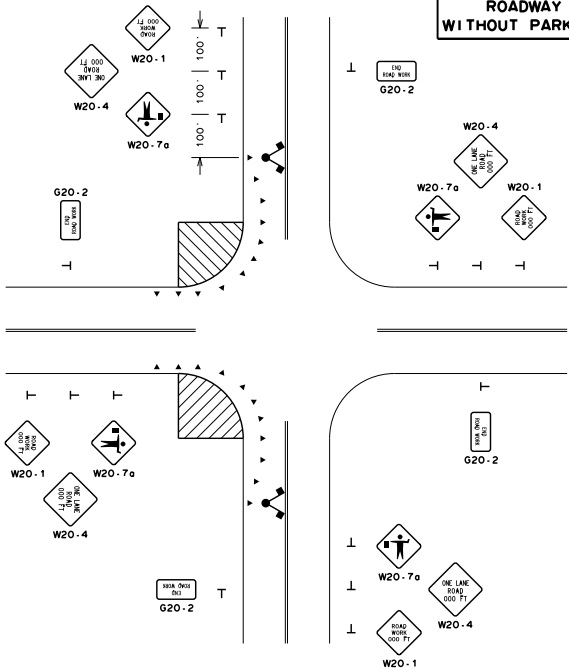
PROJECT TITLE  
STREET  
IMPROVEMENT PROGRAM  
RESIDENTIAL CURB RAMPS  
CULVER RD EAST TO CITY LINE

ISSUED	CHECKED	DRAWN	DESIGN	SCALE	PROJECT NUMBER	NO.	REVISION	BY	DATE
12/21/2018	L. REYES	K. BATZ	F. BONN, PE	NONE	19106				

DRAWING TITLE  
MAINTENANCE  
AND PROTECTION  
OF TRAFFIC

DRAWING NO.  
4  
OF

TWO LANE 2-WAY  
ROADWAY  
WITHOUT PARKING



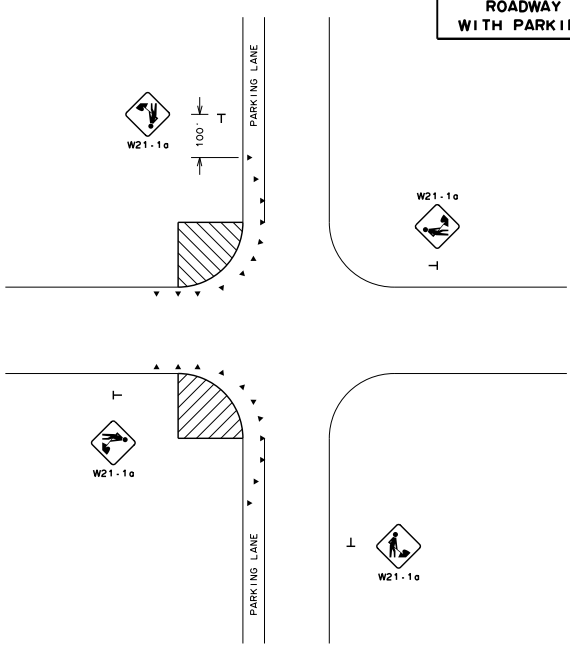
- NOTES:
- TAPER LENGTH PER NATIONAL MCDOT TABLE 6C-4.
  - MAINTAIN 2-WAY TRAFFIC IN ONE LANE.
  - MAINTAIN MINIMUM 10 FEET WIDE DRIVING LANE.
  - FOR SHORT DURATION OPERATION, W20-1 SIGN CAN BE OMITTED.

CITY OF ROCHESTER

MAINTENANCE AND  
PROTECTION OF  
TRAFFIC - MPT-1

ISSUED 10-22-01 NON-STANDARD  
REVISED 1-1-17 DWG.NO.S619-3

TWO LANE 2-WAY  
ROADWAY  
WITH PARKING



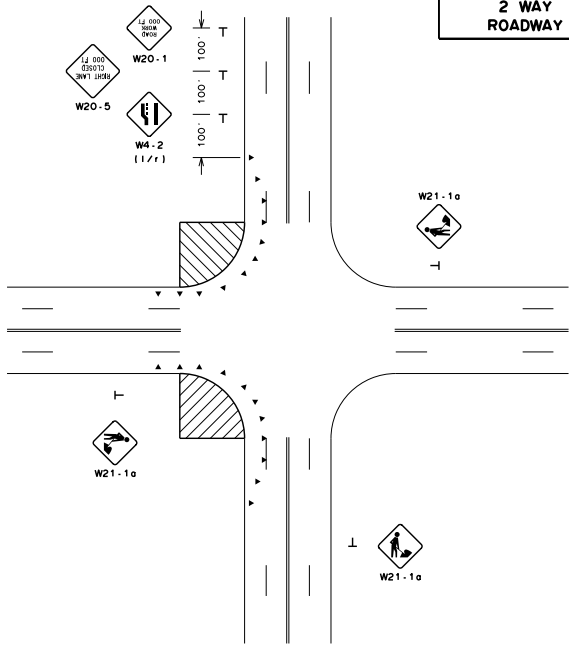
- NOTES:
- TAPER LENGTH PER NATIONAL MCDOT TABLE 6C-4.
  - MAINTAIN 2-WAY TRAFFIC IN TWO LANES.

CITY OF ROCHESTER

MAINTENANCE AND  
PROTECTION OF  
TRAFFIC - MPT-2

ISSUED 10-22-01 NON-STANDARD  
REVISED 1-1-17 DWG.NO.S619-4

MULTI-LANE  
2 WAY  
ROADWAY

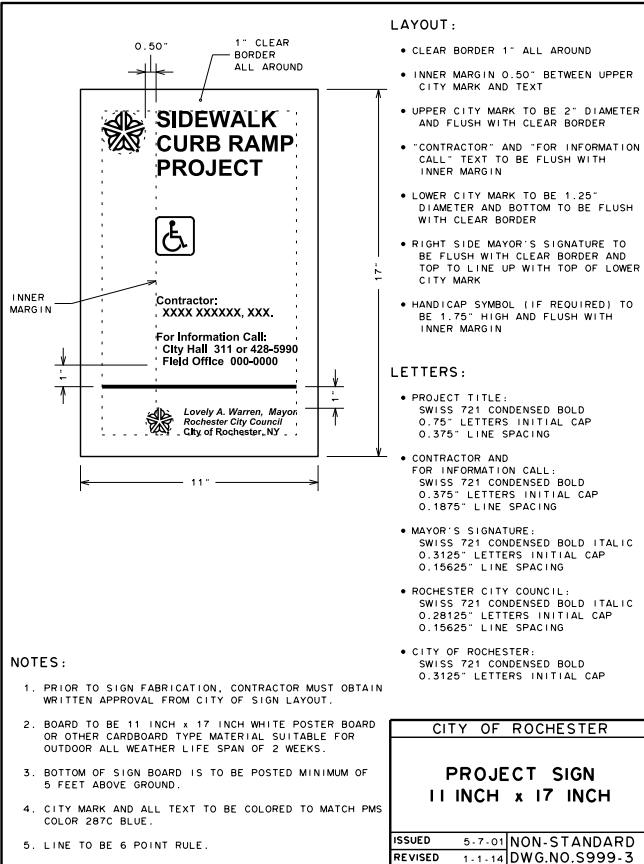


- NOTES:
- TAPER LENGTH PER NATIONAL MCDOT TABLE 6C-4.
  - MAINTAIN MINIMUM 10 FEET WIDE DRIVING LANE.

CITY OF ROCHESTER

MAINTENANCE AND  
PROTECTION OF  
TRAFFIC - MPT-3

ISSUED 10-22-01 NON-STANDARD  
REVISED 1-1-17 DWG.NO.S619-5



- NOTES:
- PRIOR TO SIGN FABRICATION, CONTRACTOR MUST OBTAIN WRITTEN APPROVAL FROM CITY OF SIGN LAYOUT.
  - BOARD TO BE 11 INCH x 17 INCH WHITE POSTER BOARD OR OTHER CARDBOARD TYPE MATERIAL SUITABLE FOR OUTDOOR ALL WEATHER LIFE SPAN OF 2 WEEKS.
  - BOTTOM OF SIGN BOARD IS TO BE POSTED MINIMUM OF 5 FEET ABOVE GROUND.
  - CITY MARK AND ALL TEXT TO BE COLORED TO MATCH PMS COLOR 287C BLUE.
  - LINE TO BE 6 POINT RULE.

- LAYOUT:
- CLEAR BORDER 1" ALL AROUND
  - INNER MARGIN 0.50" BETWEEN UPPER CITY MARK AND TEXT
  - UPPER CITY MARK TO BE 2" DIAMETER AND FLUSH WITH CLEAR BORDER
  - "CONTRACTOR" AND "FOR INFORMATION CALL" TEXT TO BE FLUSH WITH INNER MARGIN
  - LOWER CITY MARK TO BE 1.25" DIAMETER AND BOTTOM TO BE FLUSH WITH CLEAR BORDER
  - RIGHT SIDE MAYOR'S SIGNATURE TO BE FLUSH WITH CLEAR BORDER AND TOP TO LINE UP WITH TOP OF LOWER CITY MARK
  - HANDICAP SYMBOL (IF REQUIRED) TO BE 1.75" HIGH AND FLUSH WITH INNER MARGIN

- LETTERS:
- PROJECT TITLE:  
SWISS 721 CONDENSED BOLD  
0.75" LETTERS INITIAL CAP  
0.375" LINE SPACING
  - CONTRACTOR AND  
FOR INFORMATION CALL:  
SWISS 721 CONDENSED BOLD  
0.375" LETTERS INITIAL CAP  
0.1875" LINE SPACING
  - MAYOR'S SIGNATURE:  
SWISS 721 CONDENSED BOLD ITALIC  
0.3125" LETTERS INITIAL CAP  
0.15625" LINE SPACING
  - ROCHESTER CITY COUNCIL:  
SWISS 721 CONDENSED BOLD ITALIC  
0.28125" LETTERS INITIAL CAP  
0.15625" LINE SPACING
  - CITY OF ROCHESTER:  
SWISS 721 CONDENSED BOLD  
0.3125" LETTERS INITIAL CAP

CITY OF ROCHESTER

PROJECT SIGN  
11 INCH x 17 INCH

ISSUED 5-7-01 NON-STANDARD  
REVISED 1-1-14 DWG.NO.S999-3





LEGEND

NO WORK ON CULVER RD,  
MERCHANTS RD, WYAND CRES,  
SHELFORD RD AND FARMINGTON RD

79 SITE MAP NUMBER

PROJECT LIMITS

CITY BOUNDARY

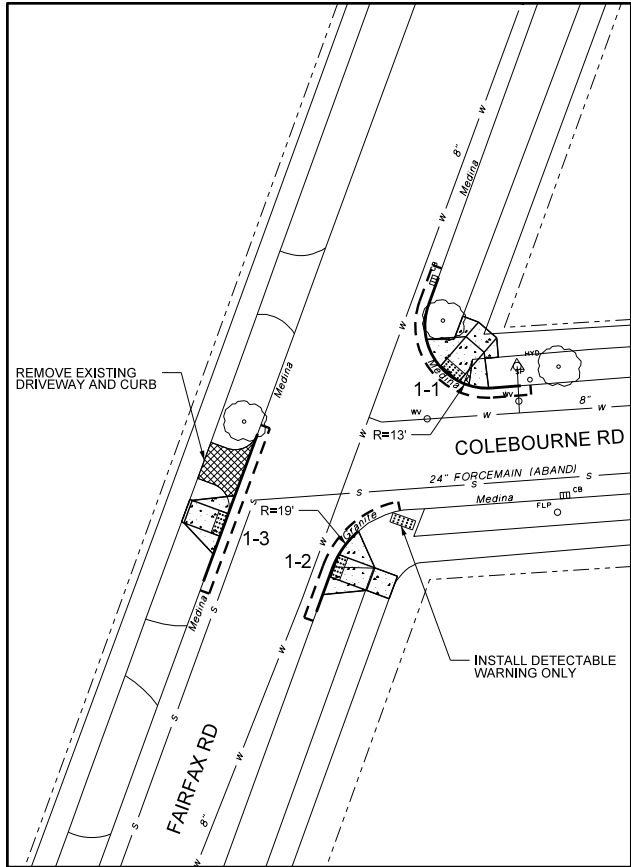


Department of Environmental Services Architecture and Engineering Services City of Rochester, New York	ASSISTANT MANAGER OF STREET DESIGN LISA Y. REYES INTERIM CITY ENGINEER HOLLY E. BARRETT, P.E.	SEED FILE DATE OCTOBER 29, 2018
--	--	------------------------------------

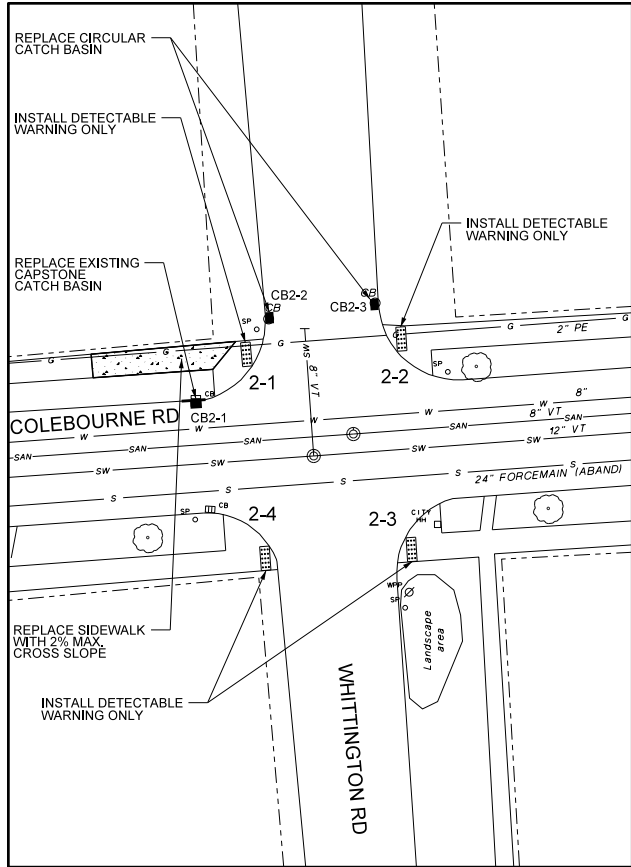
PROJECT TITLE STREET IMPROVEMENT PROGRAM RESIDENTIAL CURB RAMPS CULVER RD EAST TO CITY LINE	ISSUED 12/21/2018 CHECKED L. REYES DRAWN M. RATZ DESIGN F. BONIN PE SCALE NO SCALE PROJECT NUMBER 19106	BY DATE
---	--	------------

PROJECT INDEX MAP	NO	REVISION	DATE
-------------------	----	----------	------

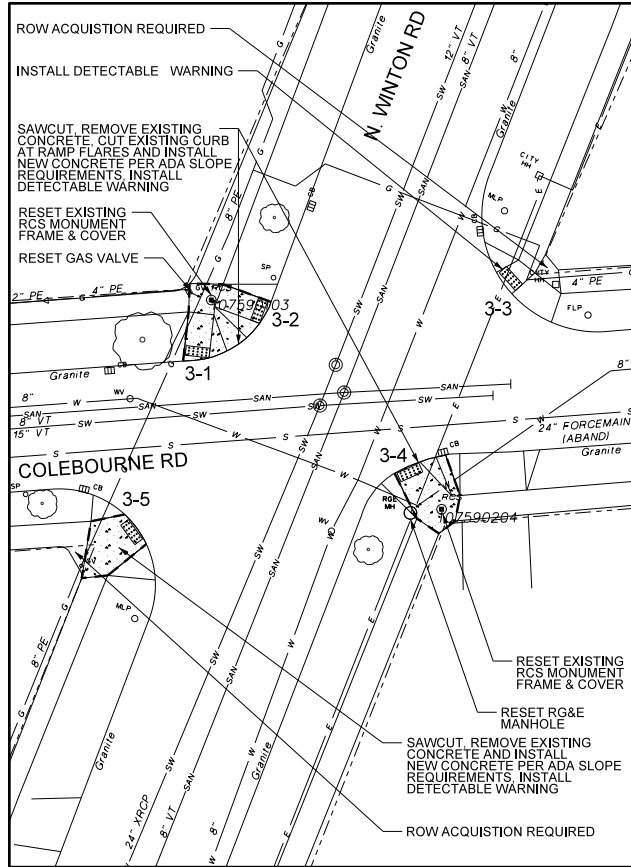
DRAWING NO. 5	OF 00
------------------	----------



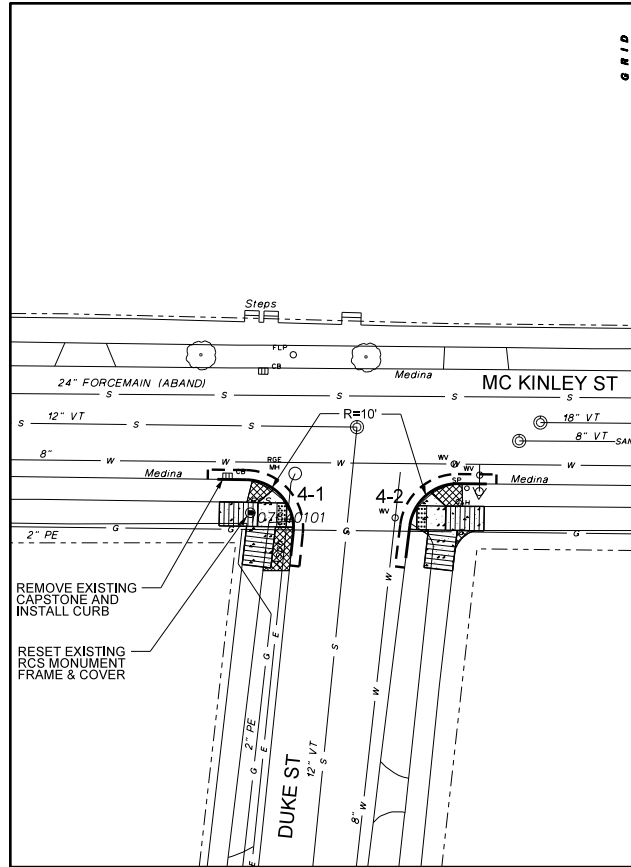
SITE MAP 1



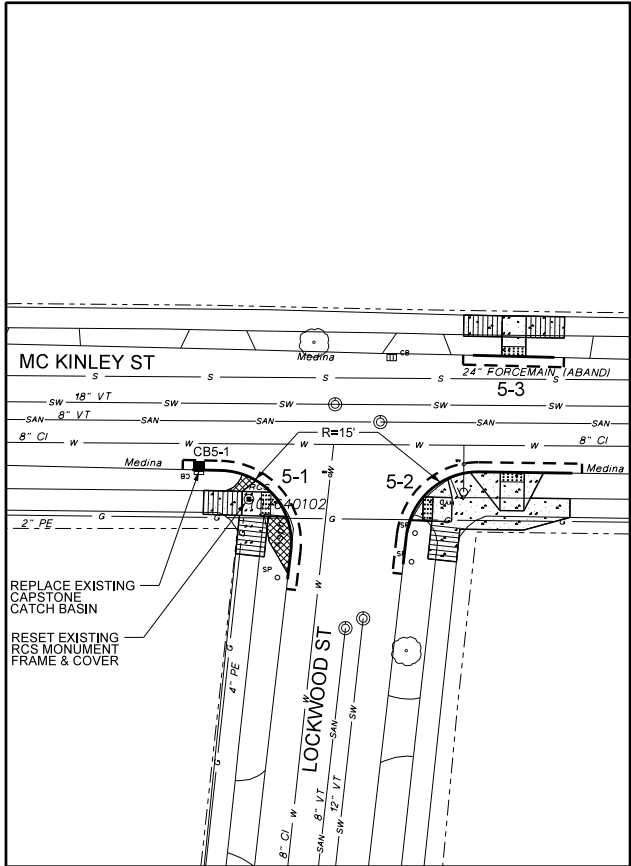
SITE MAP 2



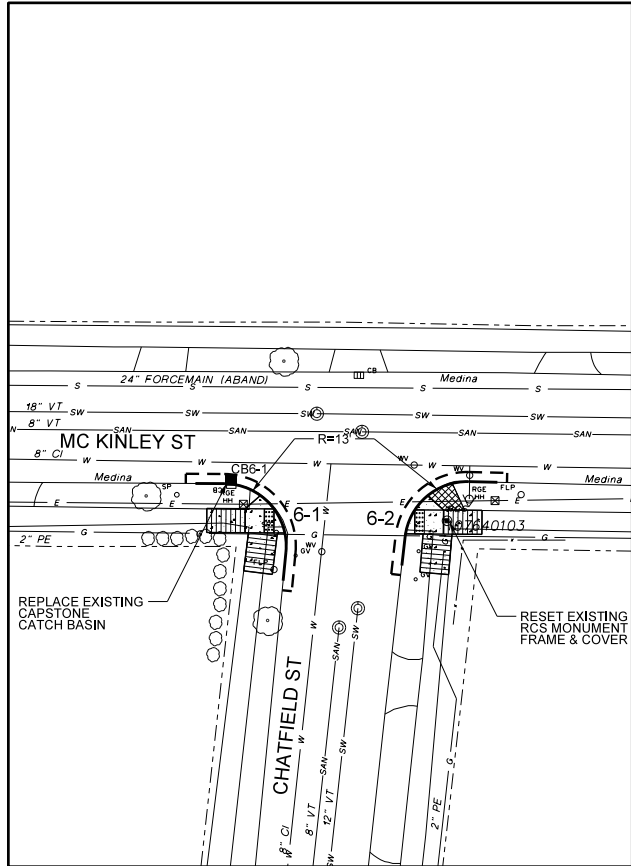
SITE MAP 3



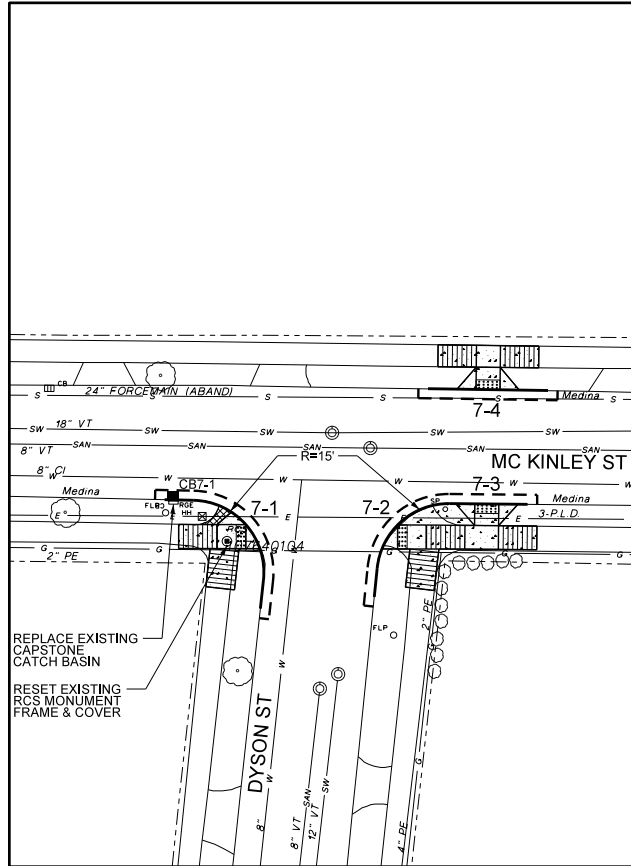
SITE MAP 4



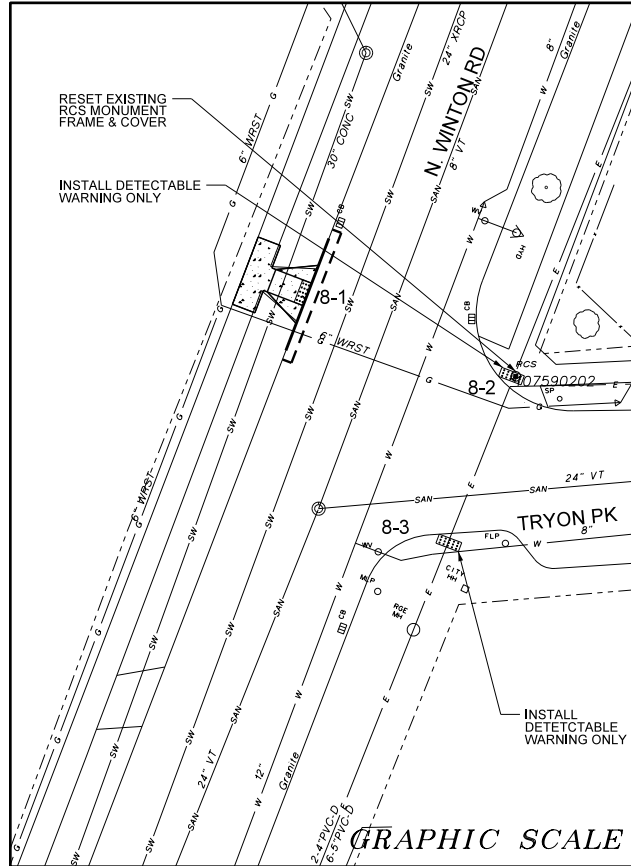
SITE MAP 5



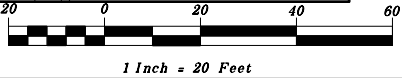
SITE MAP 6



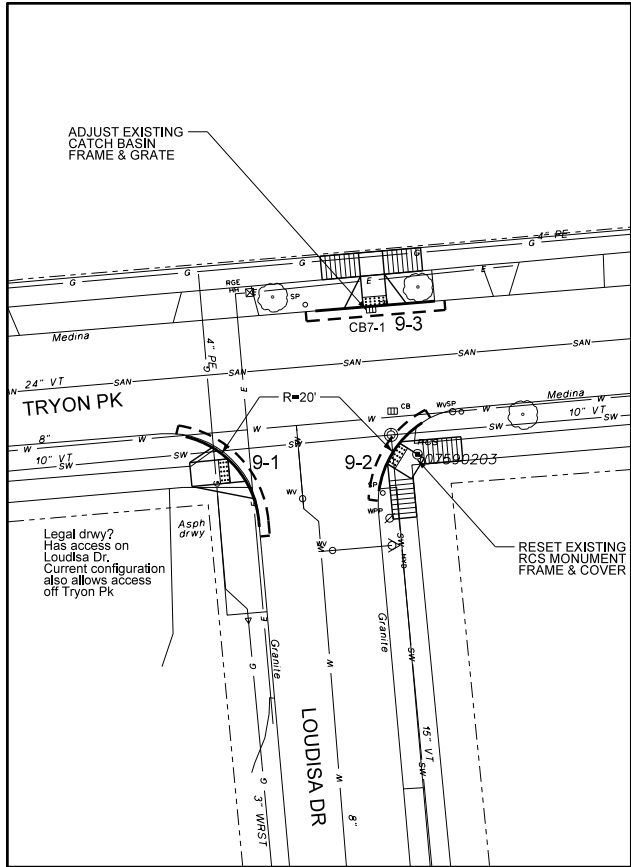
SITE MAP 7



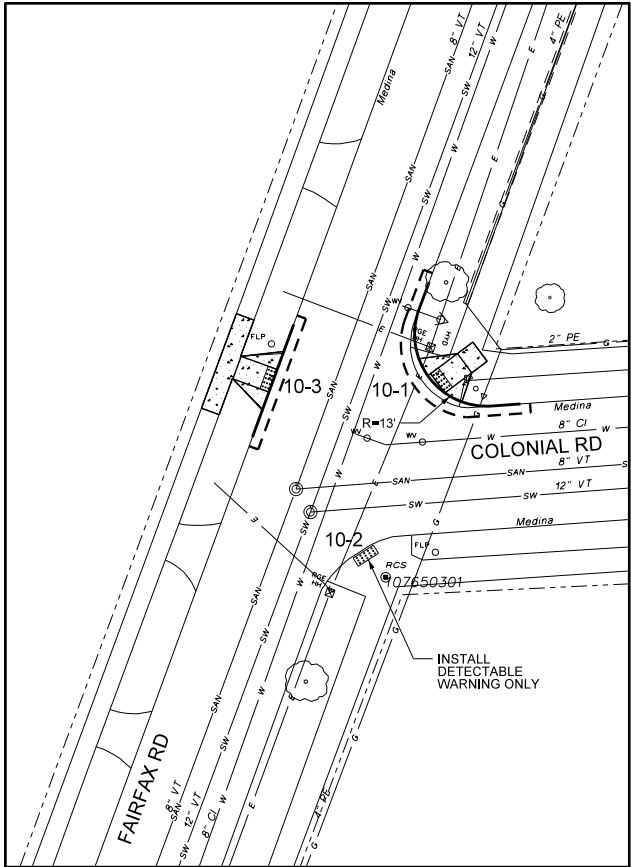
SITE MAP 8



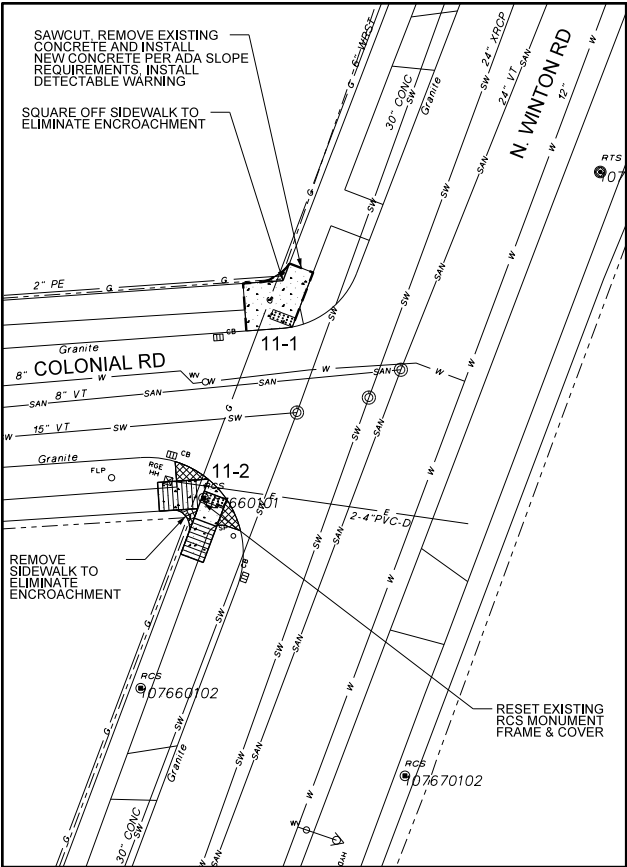
Department of Environmental Services Architecture and Engineering Services City of Rochester, New York		ASSISTANT MANAGER OF STREET DESIGN LISA Y. REYES		INTERIM CITY ENGINEER HOLLY E. BARRETT, P.E.		SEED FILE DATE OCTOBER 29, 2018									
PROJECT TITLE STREET IMPROVEMENT PROGRAM RESIDENTIAL CURB RAMPS CULVER RD EAST TO CITY LINE															
ISSUED	12/21/2018	CHECKED	L. REYES	DRAWN	K. BATZ	DESIGN	F. BONN/PE	SCALE	1" = 20'	PROJECT NUMBER	19106	NO.	REVISION	BY	DATE
DRAWING TITLE CURB RAMPS 1-1 THRU 8-3 (SITE MAPS 1 THRU 8)		DRAWING NO. 6		OF		00									



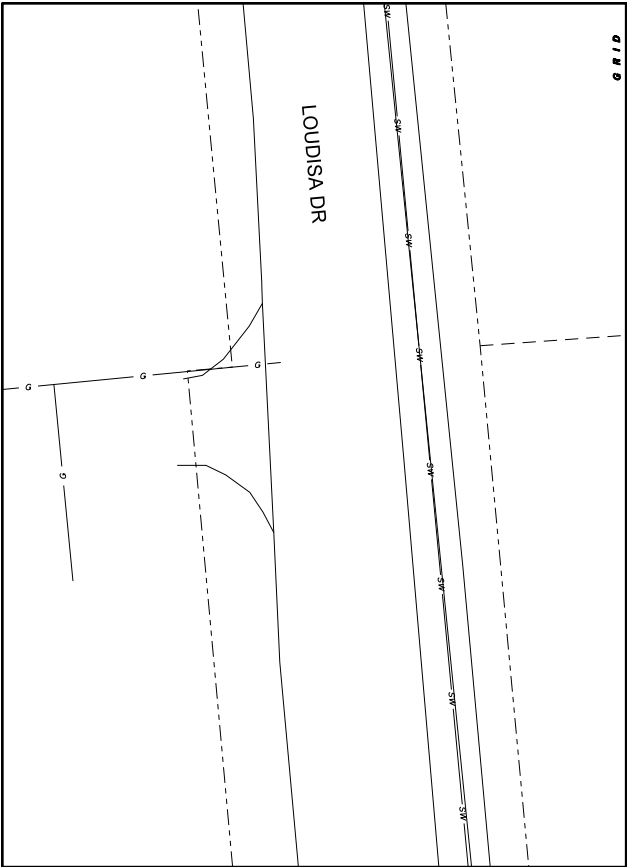
SITE MAP 9



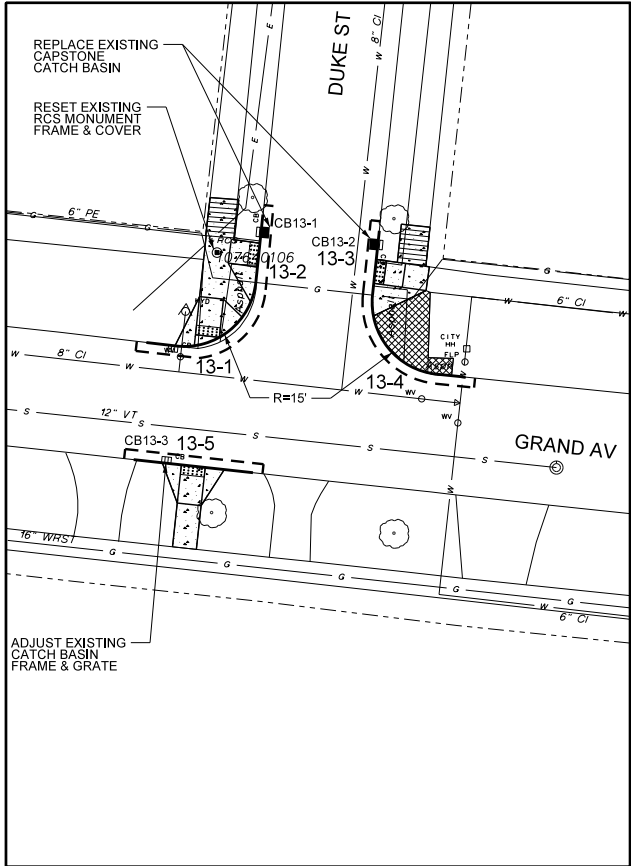
SITE MAP 10



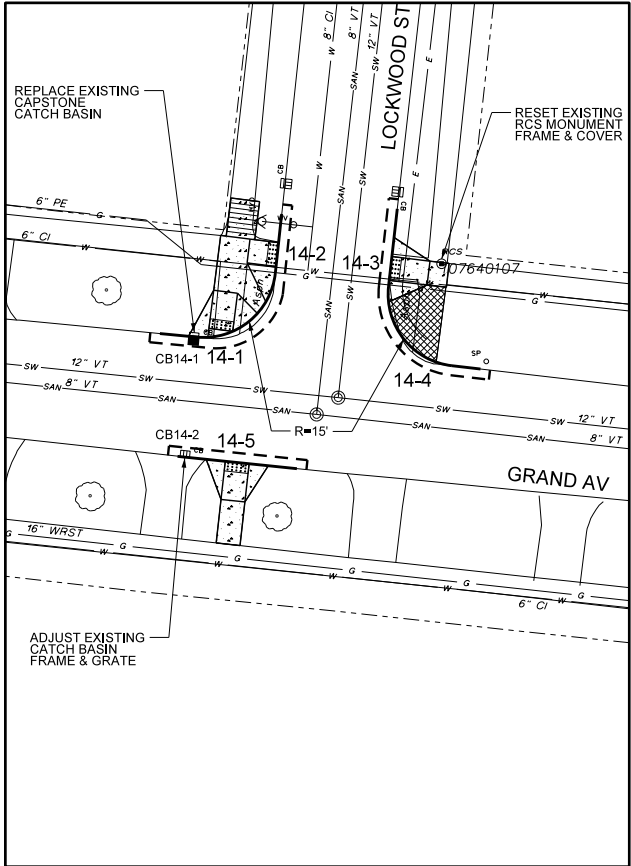
SITE MAP 11



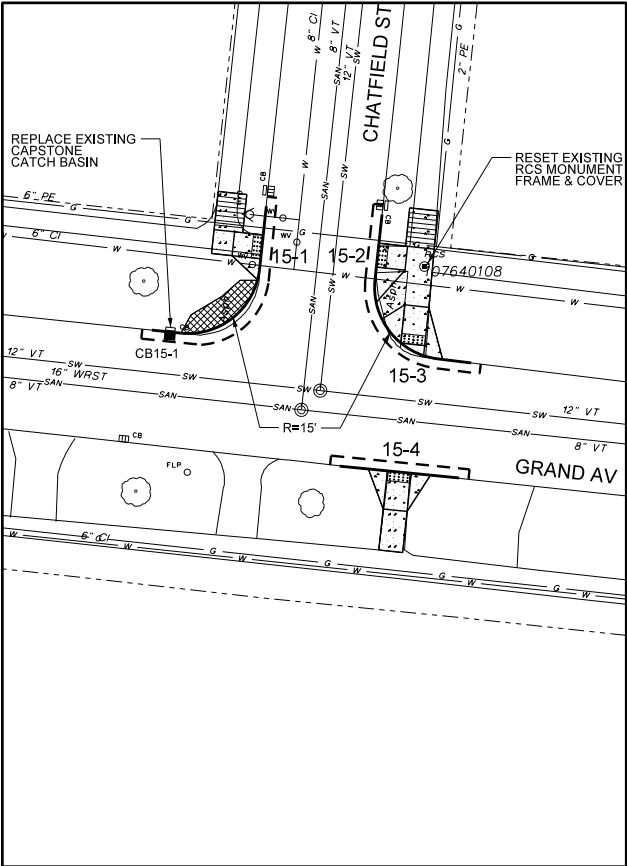
SITE MAP 12



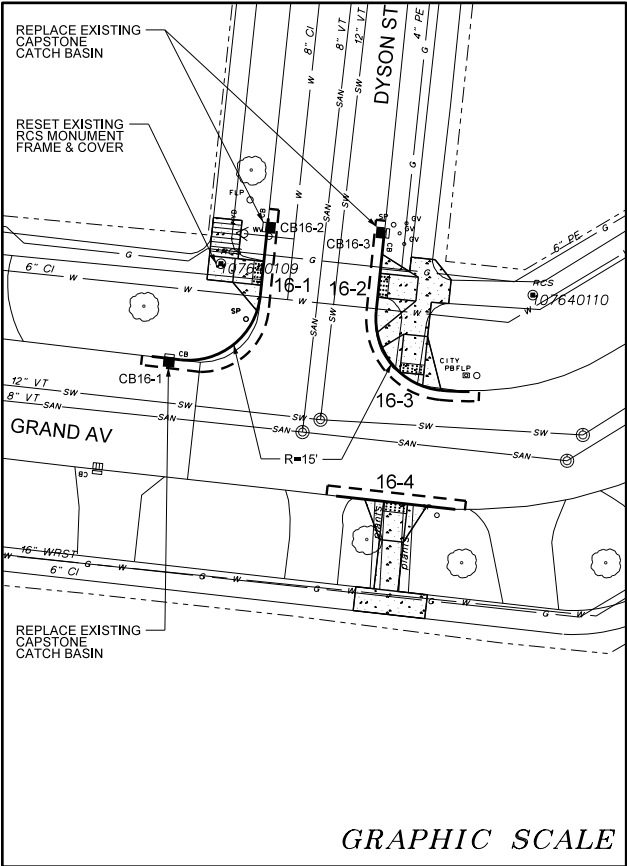
SITE MAP 13



SITE MAP 14

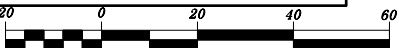


SITE MAP 15



SITE MAP 16

GRAPHIC SCALE



1 Inch = 20 Feet

PROJECT TITLE  
STREET  
IMPROVEMENT PROGRAM  
RESIDENTIAL CURB RAMPS  
CULVER RD EAST TO CITY LINE

ISSUED 12/21/2018  
CHECKED L. REYES  
DRAWN K. BATZ  
DESIGN F. BONN/PE  
SCALE 1" = 20'  
PROJECT NUMBER 19106

DRAWING TITLE  
CURB RAMPS  
9-1 THRU 16-4  
(SITE MAPS 9 THRU 16)

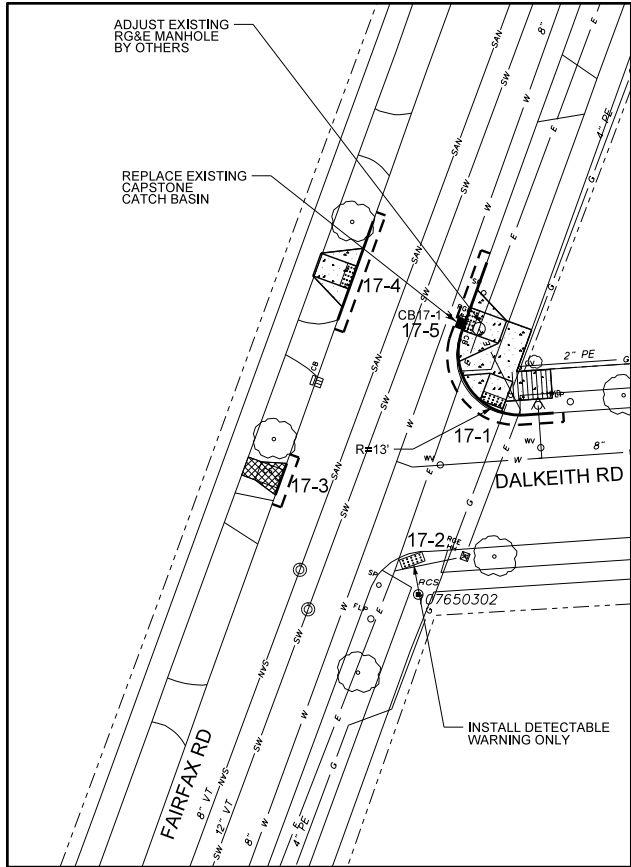
DRAWING NO.  
7  
OF 00

Department of Environmental Services  
Architecture and Engineering Services  
City of Rochester, New York

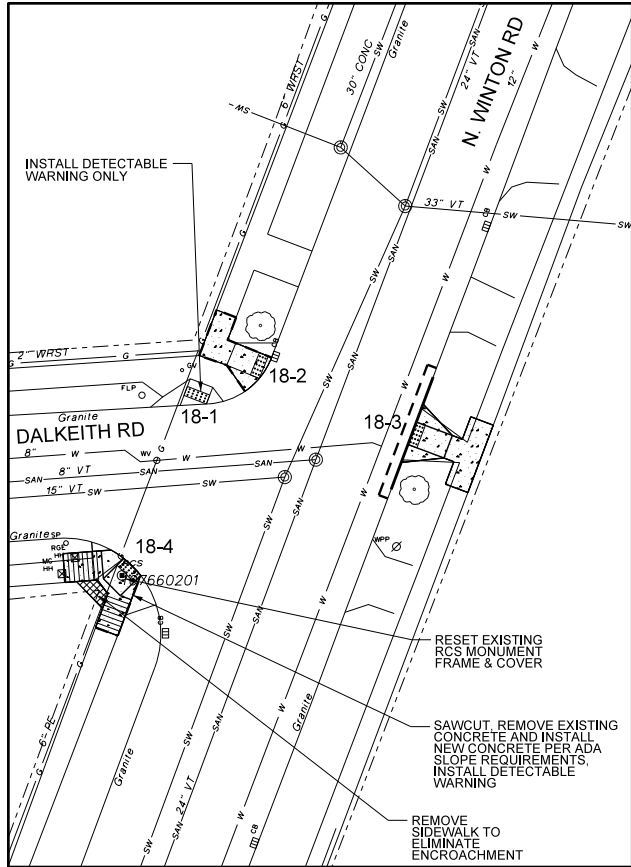
ASSISTANT MANAGER OF STREET DESIGN LISA Y. REYES  
INTERIM CITY ENGINEER HOLLY E. BARRETT, P.E.

SEED FILE DATE OCTOBER 29, 2018

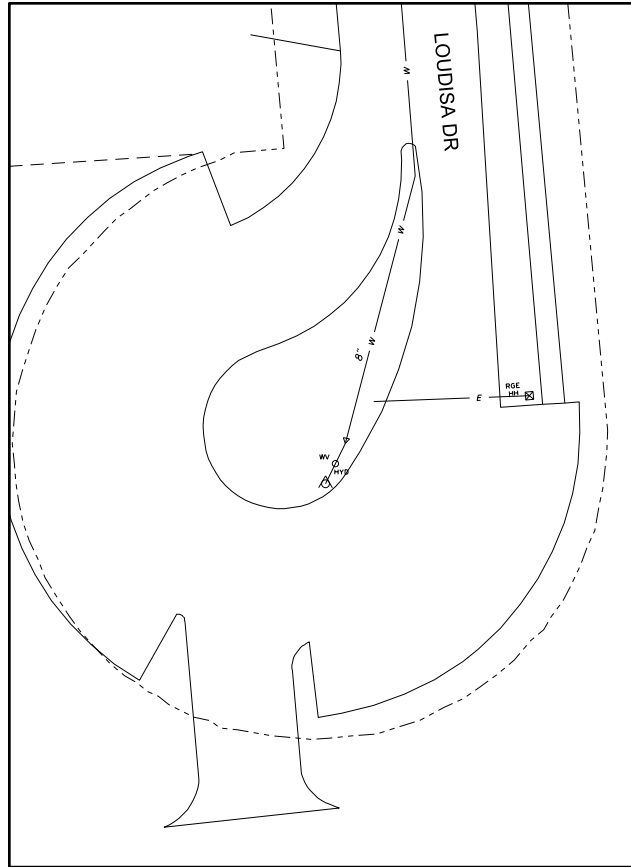
NO.	REVISION	BY	DATE



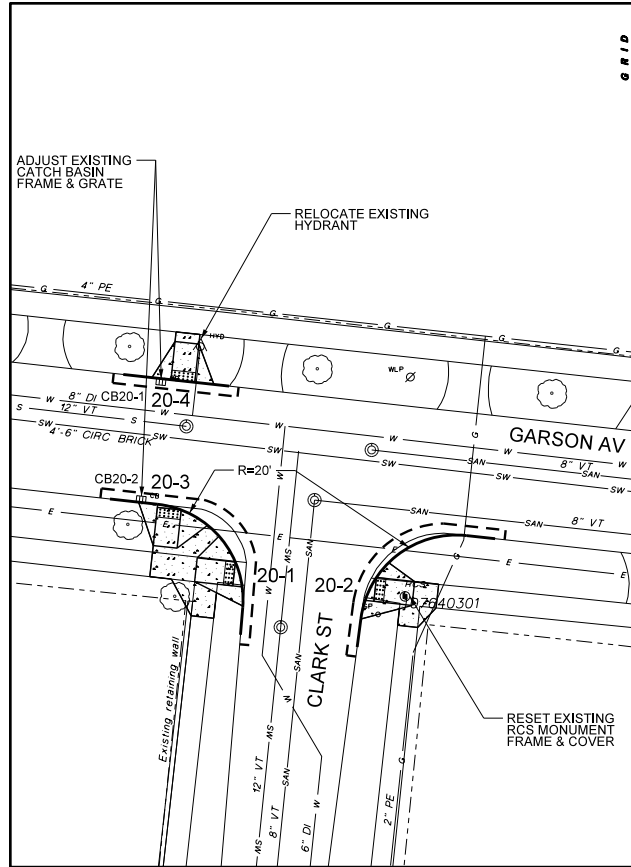
SITE MAP 17



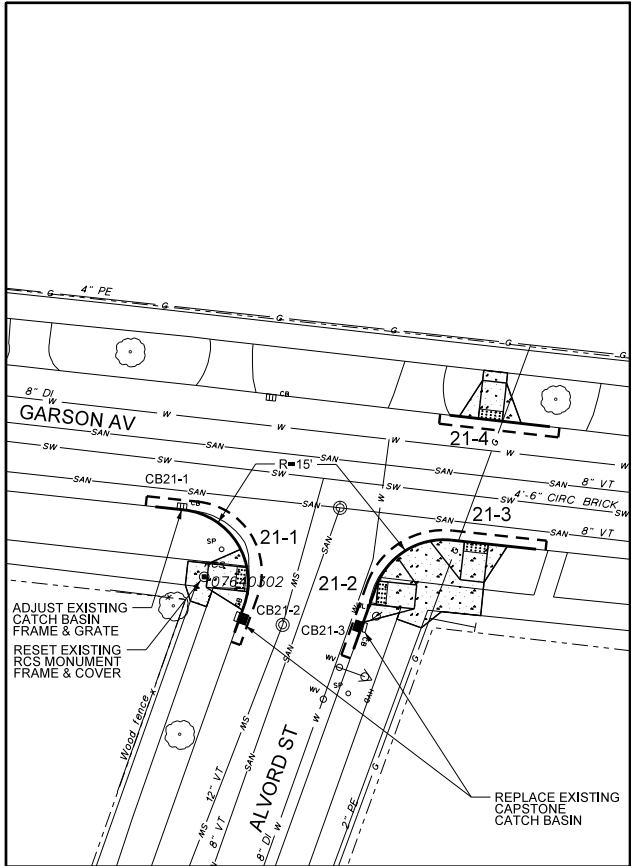
SITE MAP 18



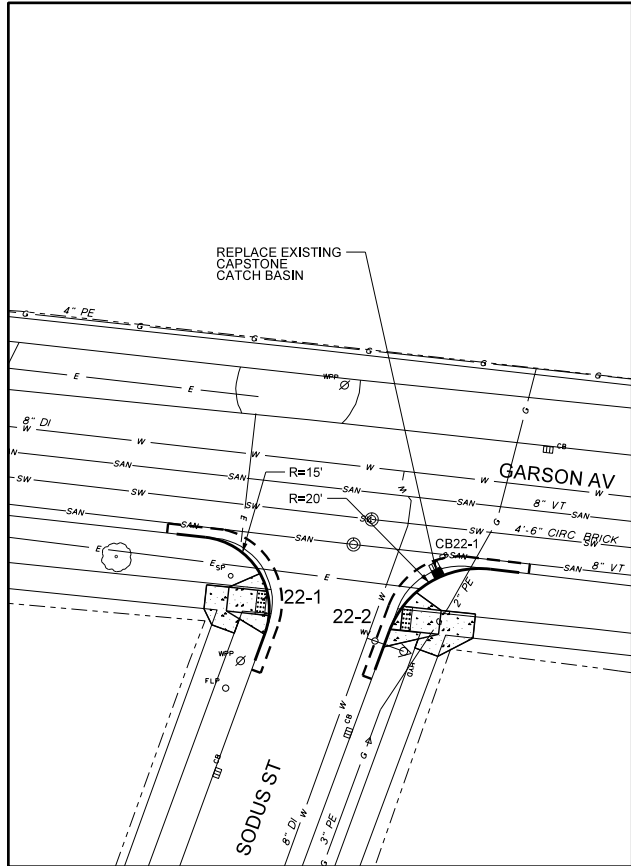
SITE MAP 19



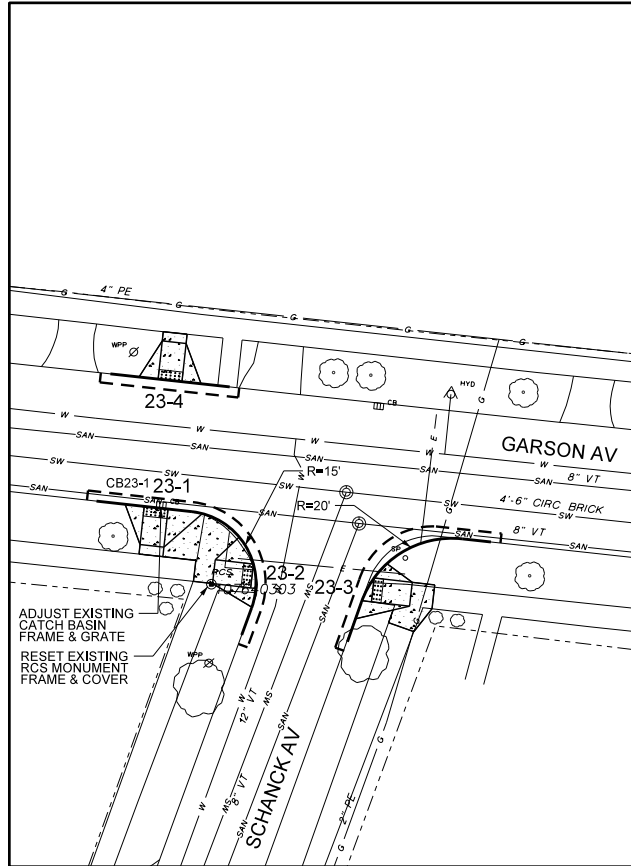
SITE MAP 20



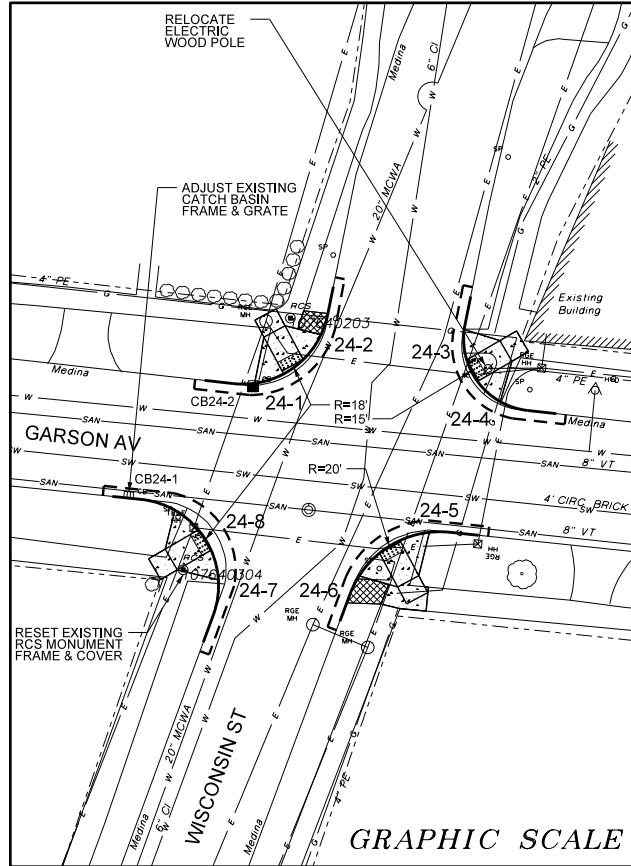
SITE MAP 21



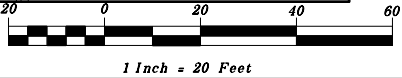
SITE MAP 22



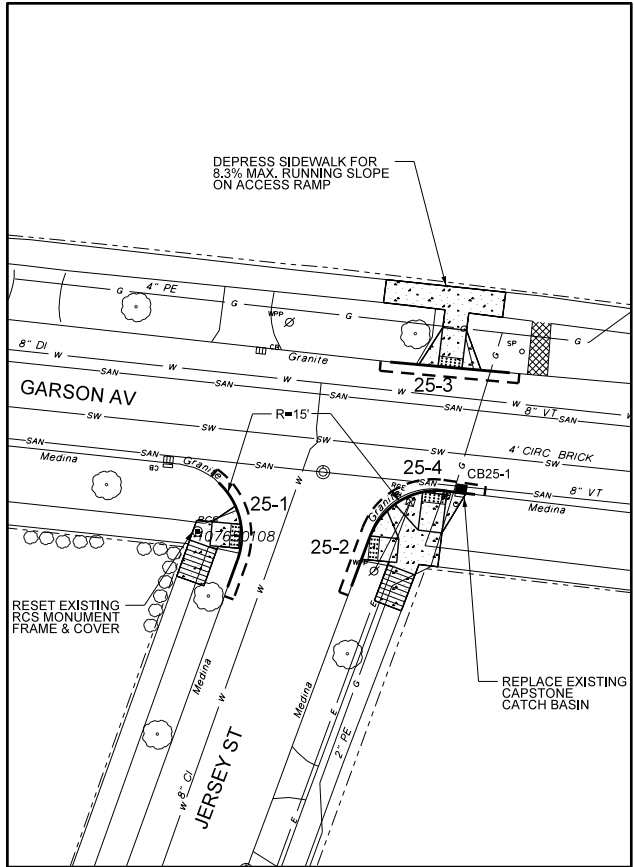
SITE MAP 23



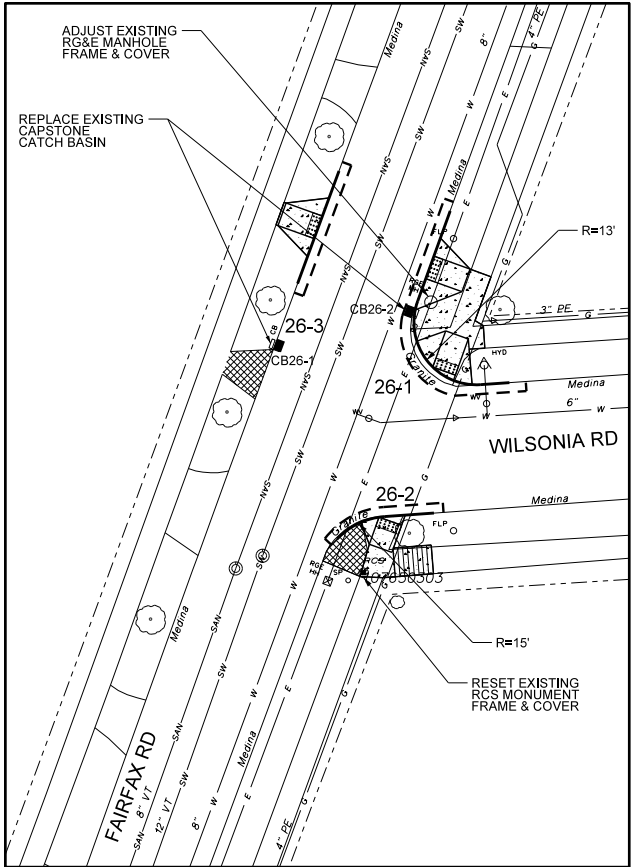
SITE MAP 24



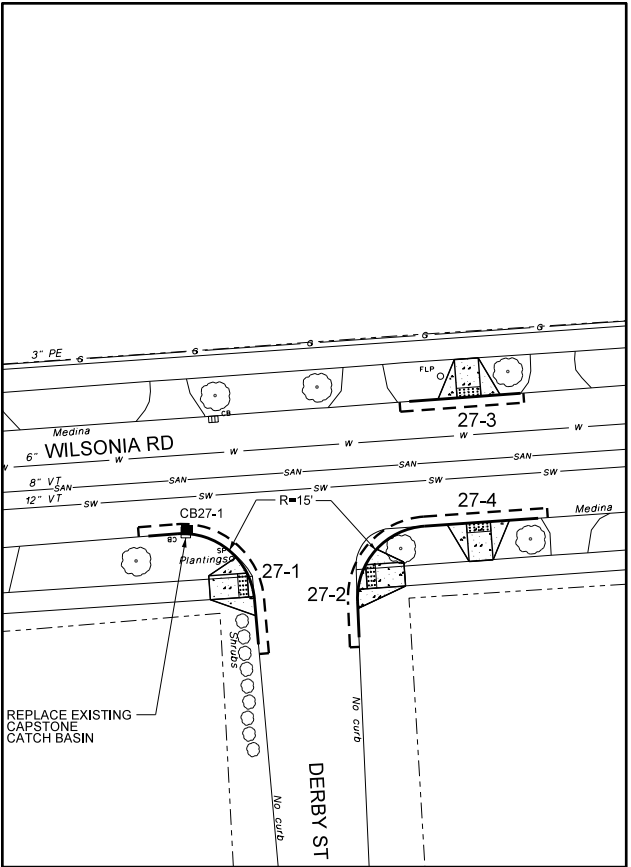
PROJECT TITLE		STREET IMPROVEMENT PROGRAM RESIDENTIAL CURB RAMPS CULVER RD EAST TO CITY LINE	
PROJECT NO.		17-1 THRU 24-8 (SITE MAPS 17 THRU 24)	
ISSUED		12/21/2018	
CHECKED	L. REYES	NO.	
DRAWN	K. BATZ	REVISION	
DESIGN	F. BONN/PE	BY	DATE
SCALE	1" = 20'		
PROJECT NUMBER	19106		
DRAWING NO.		00	
DRAWING TITLE		CURB RAMPS 17-1 THRU 24-8 (SITE MAPS 17 THRU 24)	
DEPARTMENT OF ENVIRONMENTAL SERVICES ARCHITECTURE AND ENGINEERING SERVICES CITY OF ROCHESTER, NEW YORK		ASSISTANT MANAGER OF STREET DESIGN LISA Y. REYES INTERIM CITY ENGINEER HOLLY E. BARRETT, P.E.	
SEED FILE DATE		OCTOBER 29, 2018	



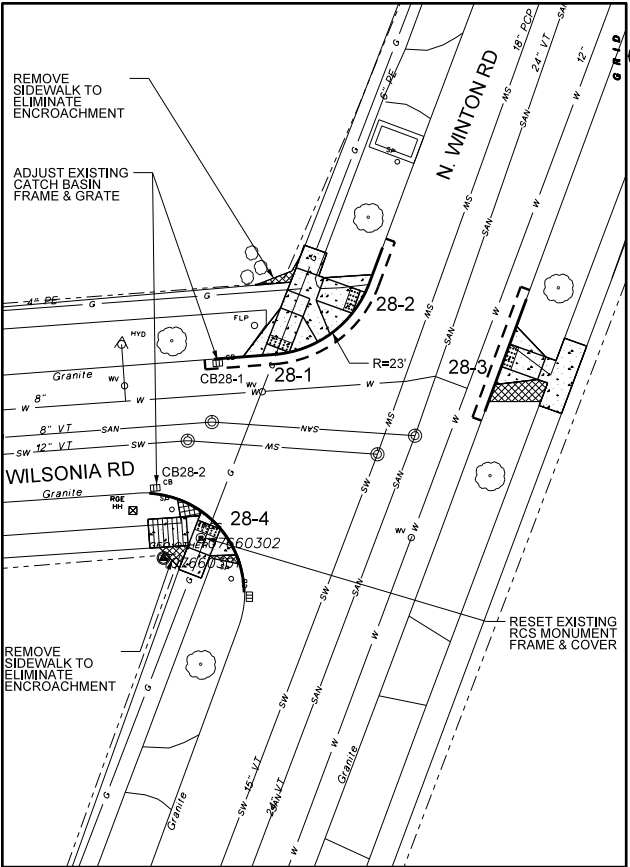
SITE MAP 25



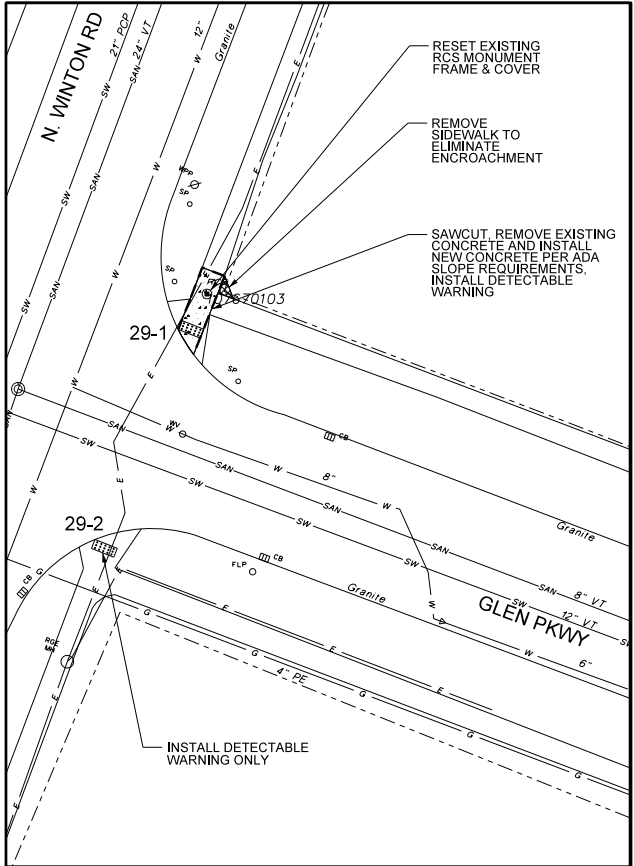
SITE MAP 26



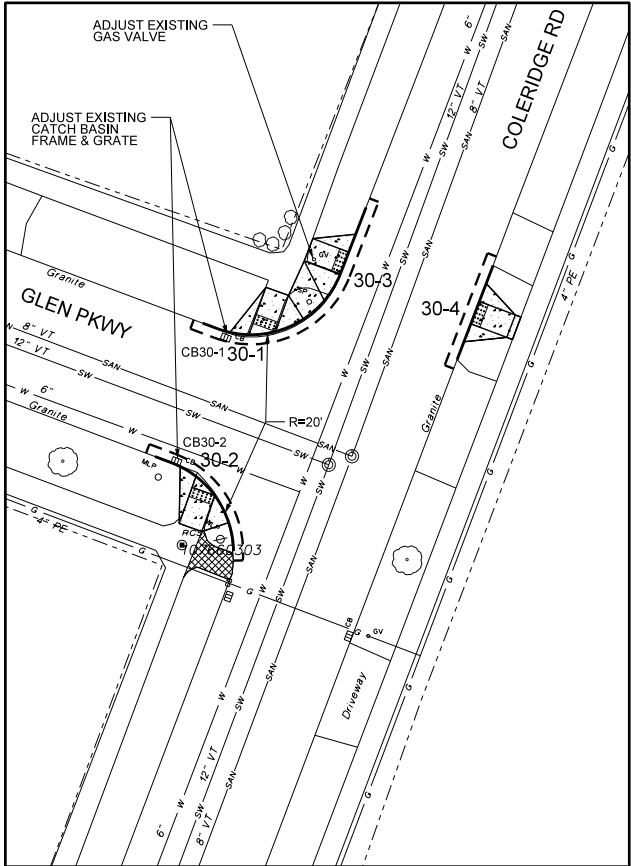
SITE MAP 27



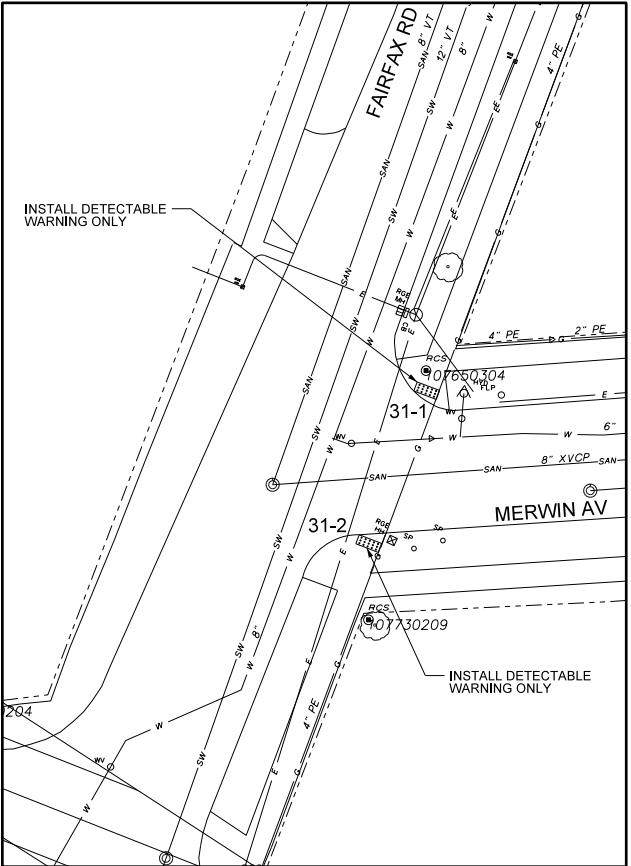
SITE MAP 28



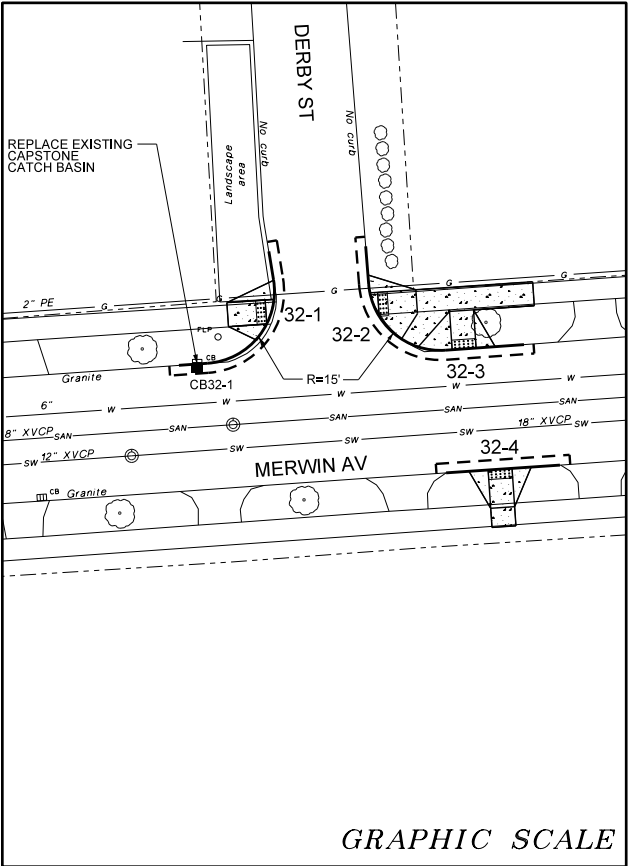
SITE MAP 29



SITE MAP 30

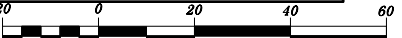


SITE MAP 31



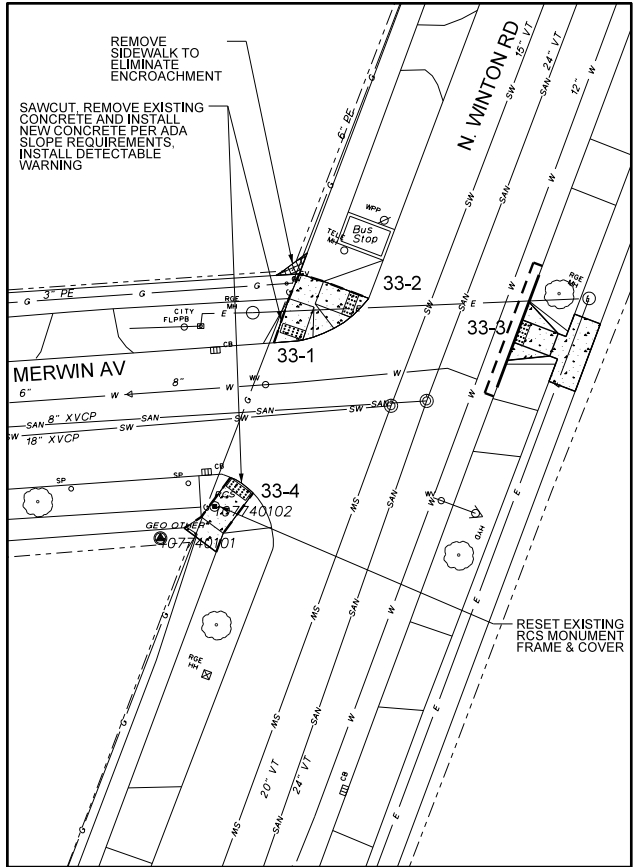
SITE MAP 32

GRAPHIC SCALE

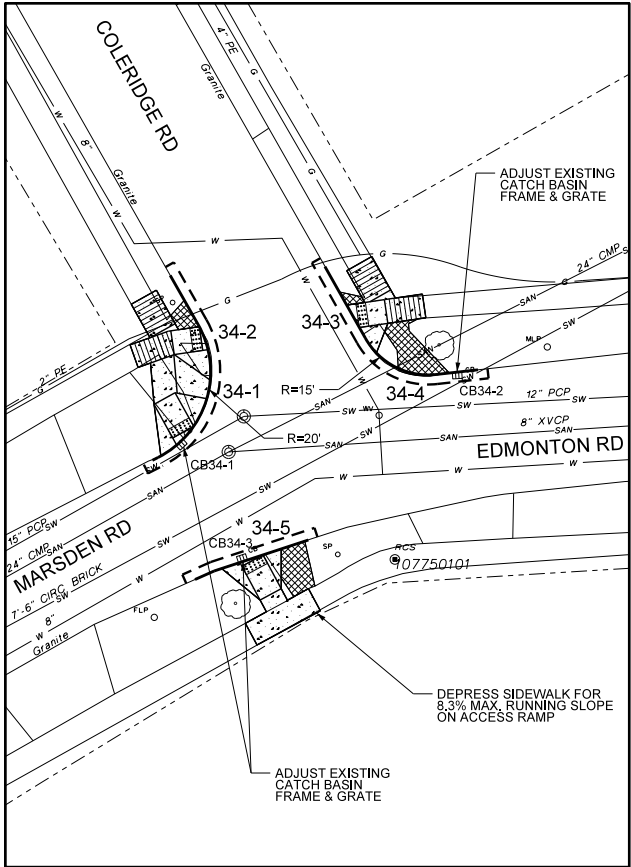


1 Inch = 20 Feet

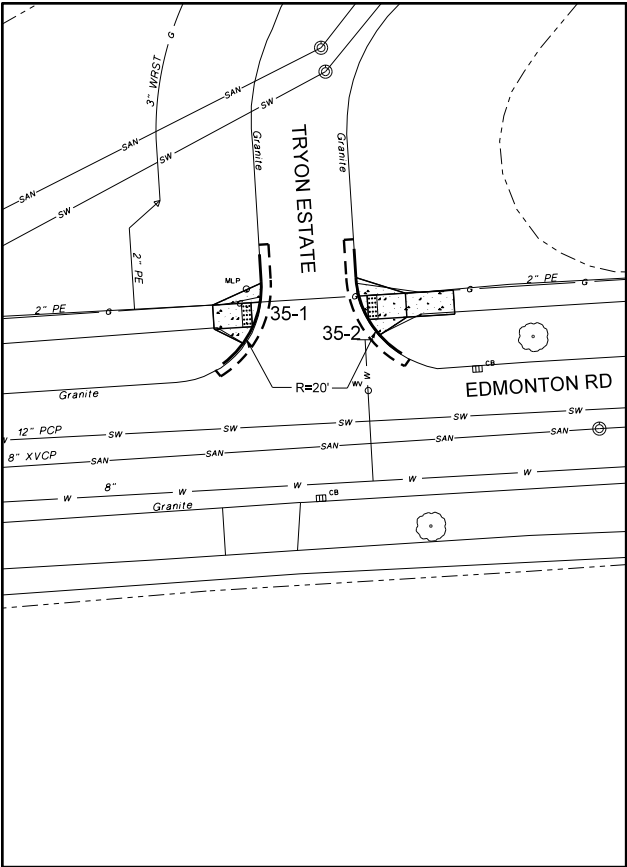
PROJECT TITLE		STREET IMPROVEMENT PROGRAM RESIDENTIAL CURB RAMPS CULVER RD EAST TO CITY LINE	
PROJECT NO.		19106	
ISSUED		12/21/2018	
CHECKED	L. REYES	DATE	
DRAWN	K. BATZ	BY	
DESIGN	F. BONN/PE	REVISION	
SCALE	1" = 20'	NO.	
PROJECT NUMBER	19106		
DRAWING TITLE		CURB RAMPS 25-1 THRU 32-2 (SITE MAPS 25 THRU 32)	
DRAWING NO.		9	
OF		00	
Department of Environmental Services Architecture and Engineering Services City of Rochester, New York		ASSISTANT MANAGER OF STREET DESIGN LISA Y. REYES INTERIM CITY ENGINEER HOLLY E. BARRETT, P.E.	
SEED FILE DATE		OCTOBER 29, 2018	



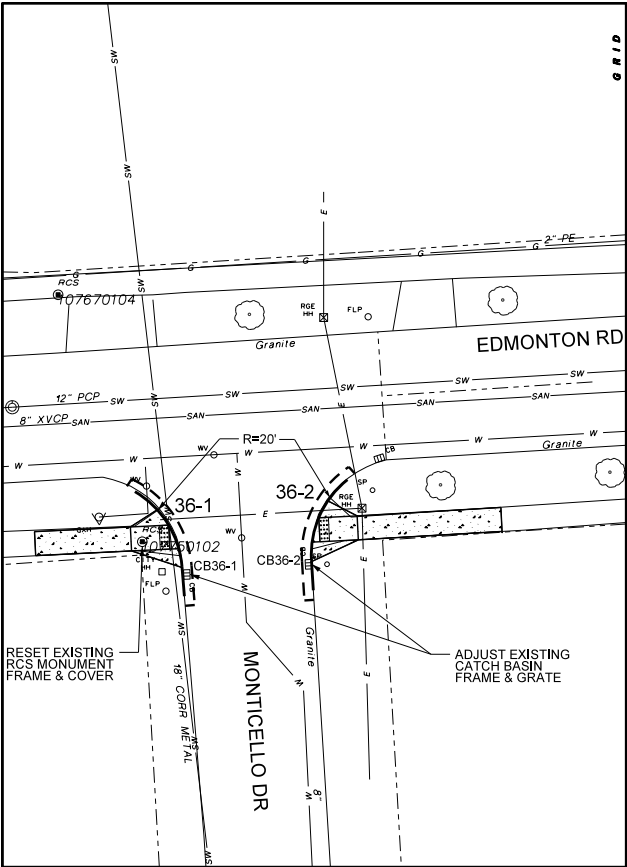
SITE MAP 33



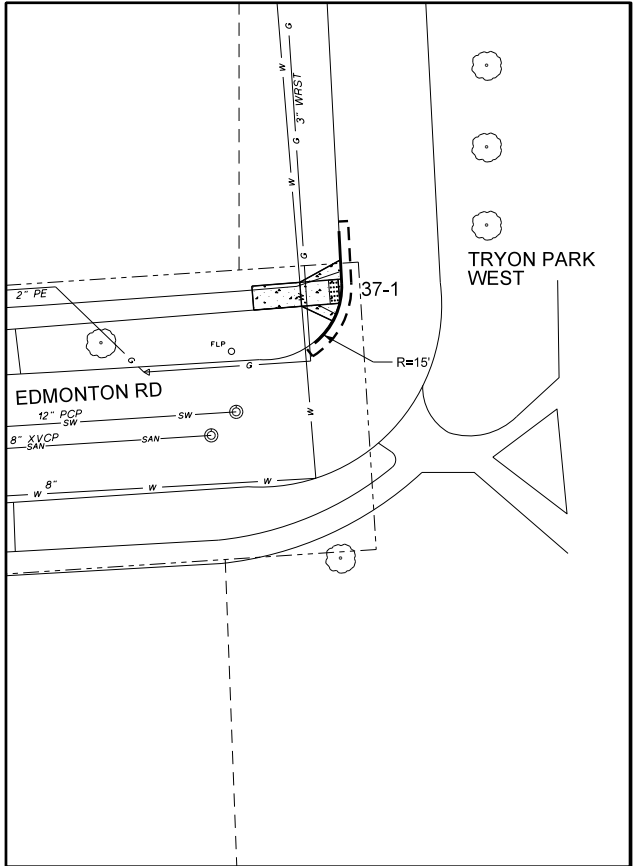
SITE MAP 34



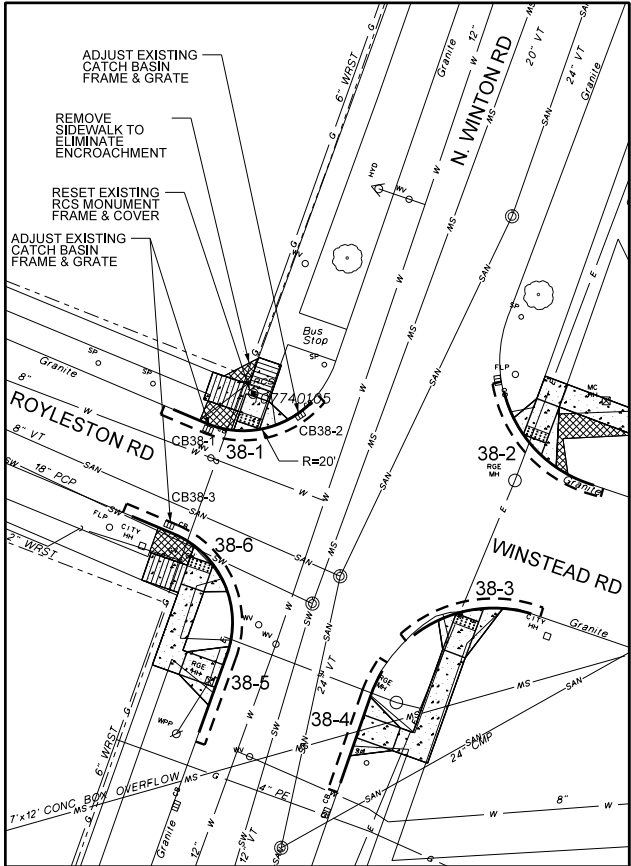
SITE MAP 35



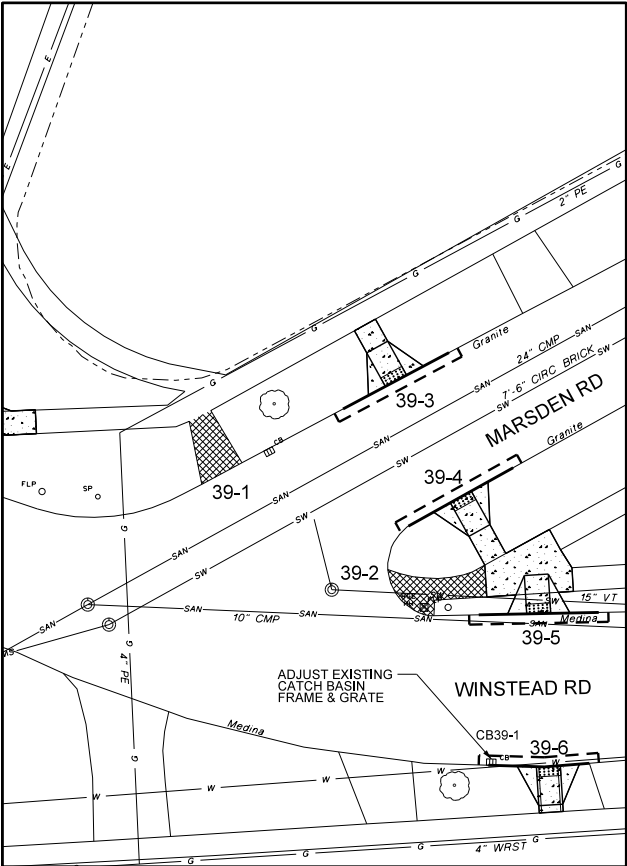
SITE MAP 36



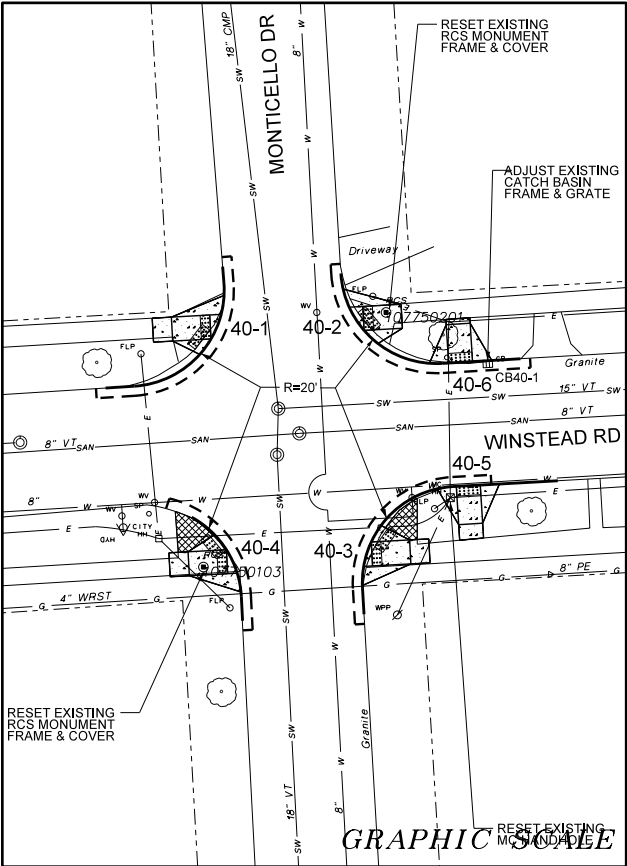
SITE MAP 37



SITE MAP 38



SITE MAP 39

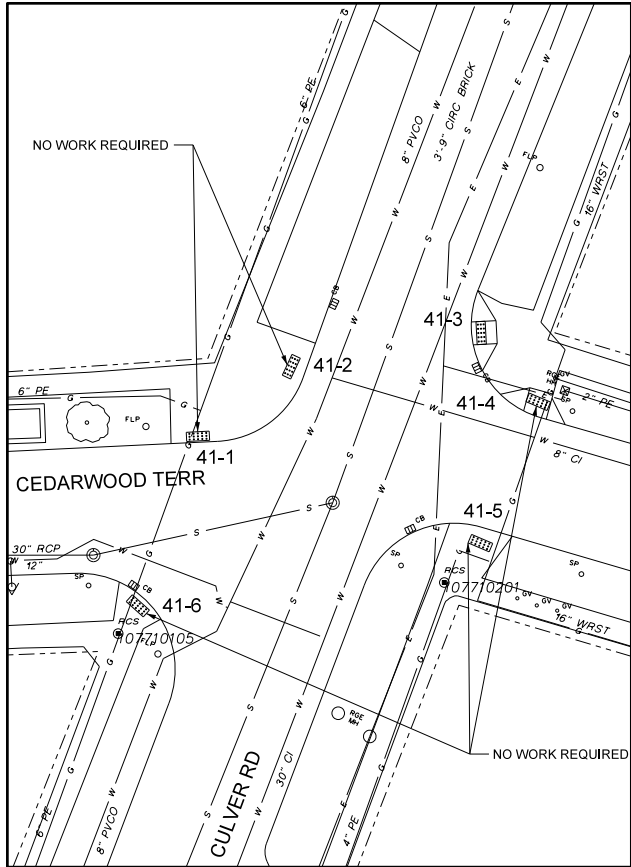


SITE MAP 40

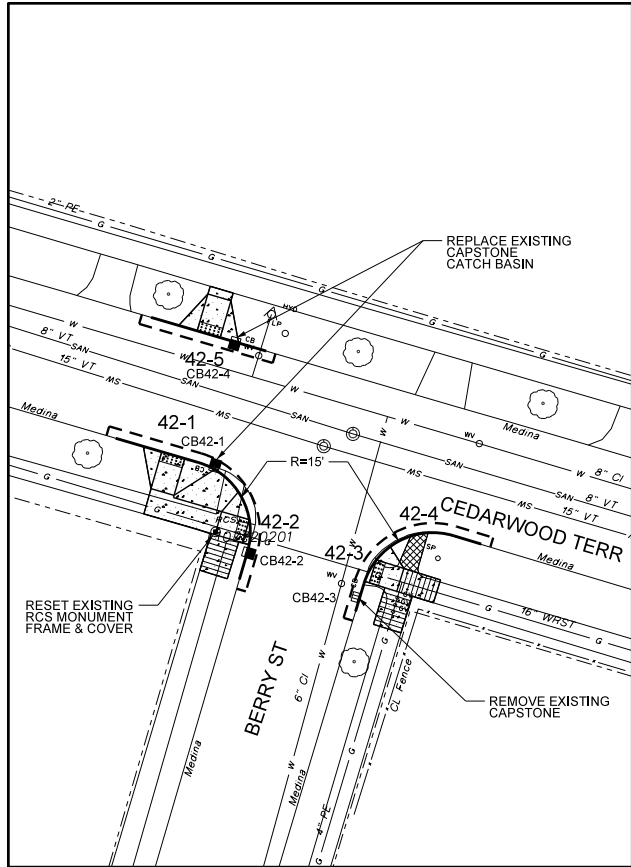


PROJECT TITLE		STREET IMPROVEMENT PROGRAM RESIDENTIAL CURB RAMPS CULVER RD EAST TO CITY LINE	
PROJECT NO.		19106	
ISSUED		12/21/2018	
CHECKED	L. REYES	DATE	
DRAWN	K. BATZ	REVISION	
DESIGN	F. BONNIPE	BY	
SCALE	1" = 20'	NO.	
PROJECT NUMBER	19106		
DRAWING TITLE		CURB RAMPS 33-1 THRU 40-4 (SITE MAPS 33 THRU 40)	
DRAWING NO.		10	
		00	
Department of Environmental Services Architecture and Engineering Services City of Rochester, New York		ASSISTANT MANAGER OF STREET DESIGN LISA Y. REYES INTERIM CITY ENGINEER HOLLY E. BARRETT, P.E.	
		SEED FILE DATE OCTOBER 29, 2018	

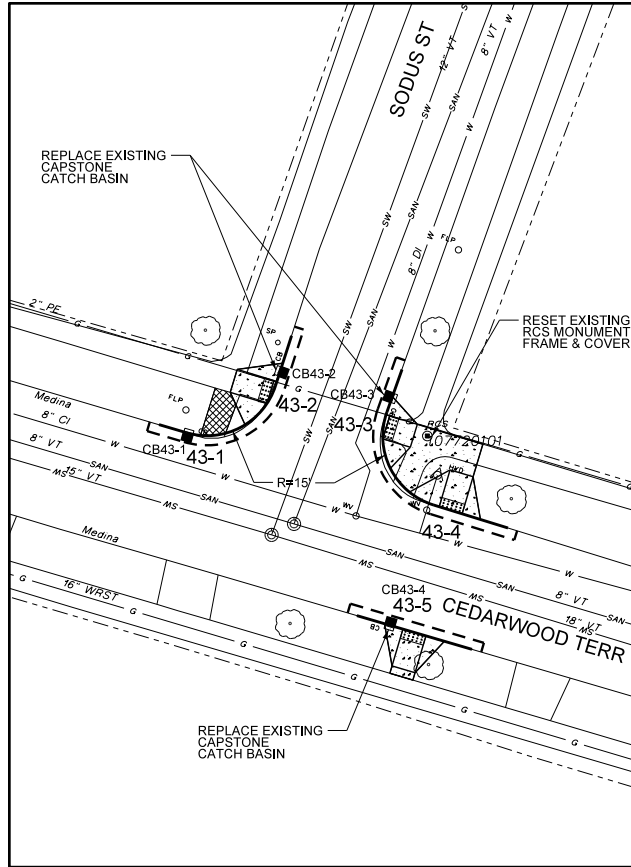




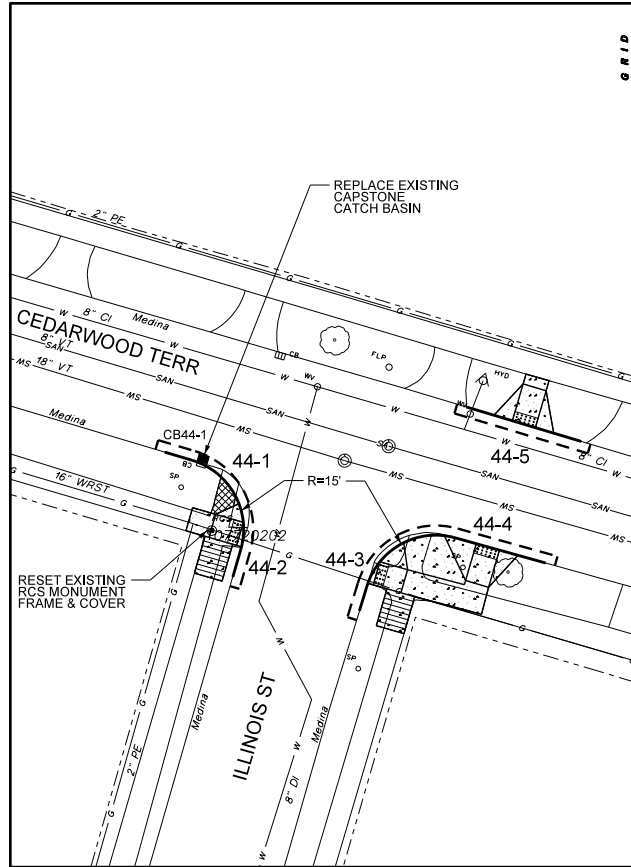
SITE MAP 41



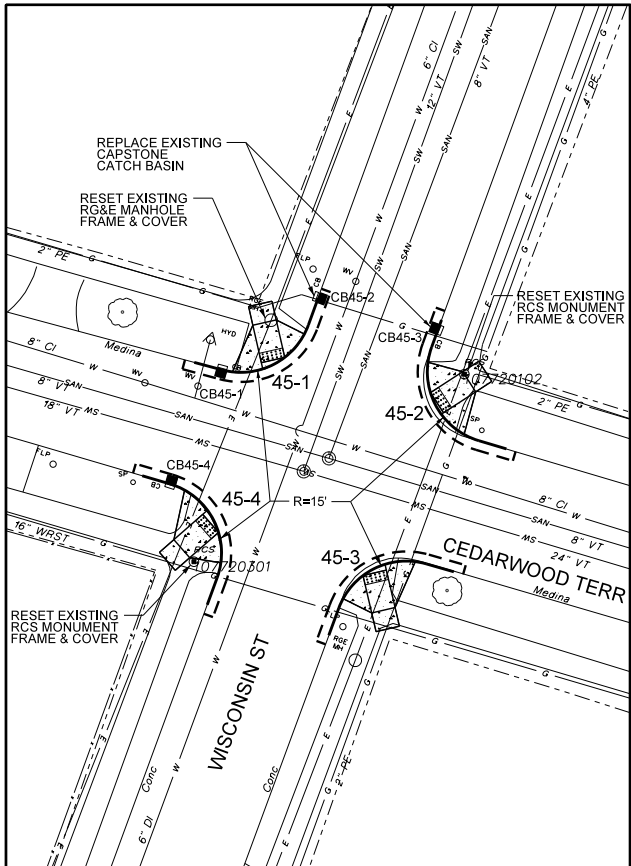
SITE MAP 42



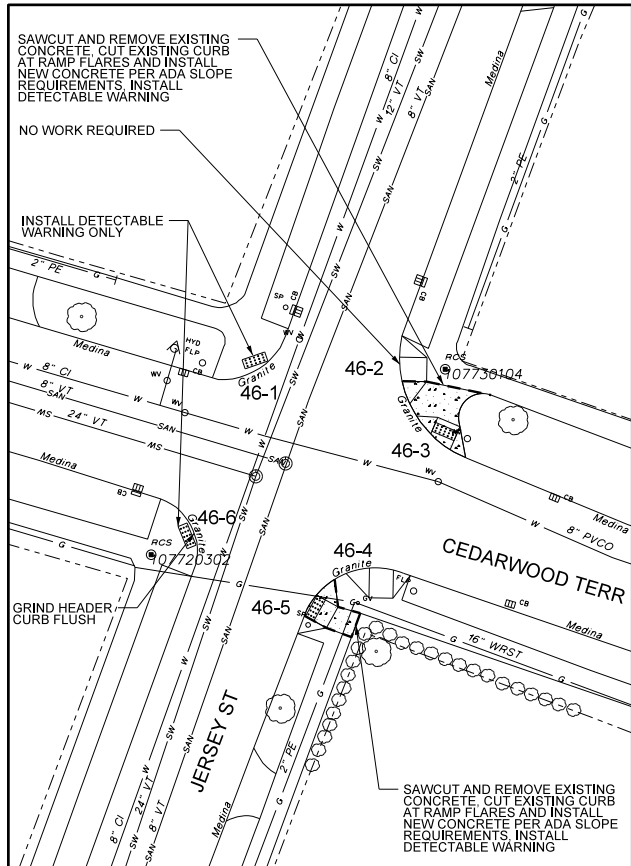
SITE MAP 43



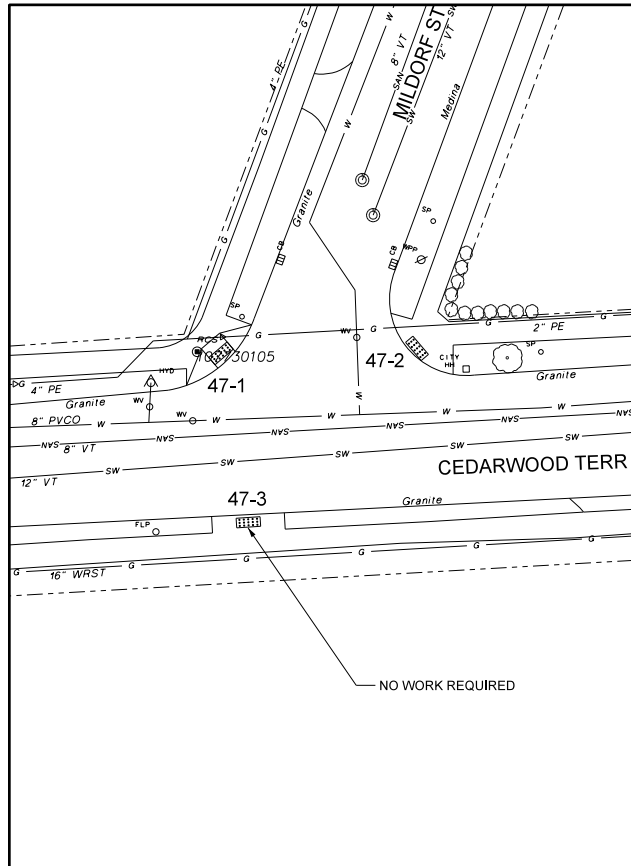
SITE MAP 44



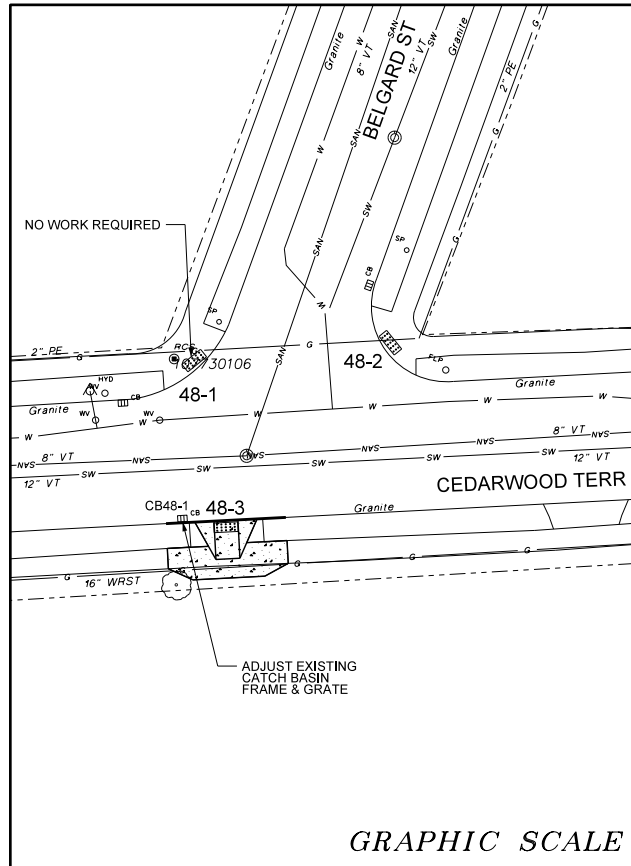
SITE MAP 45



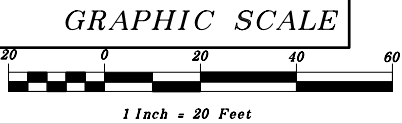
SITE MAP 46



SITE MAP 47

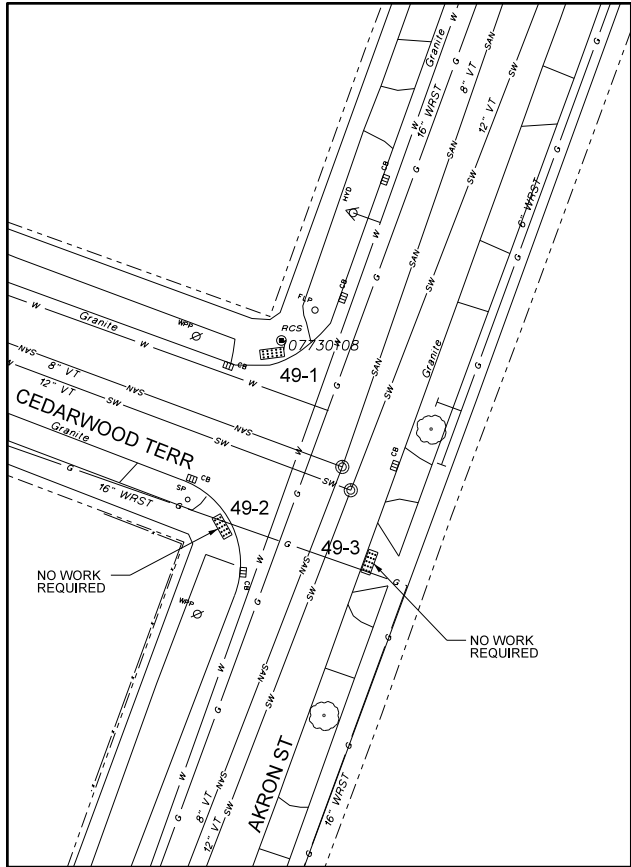


SITE MAP 48

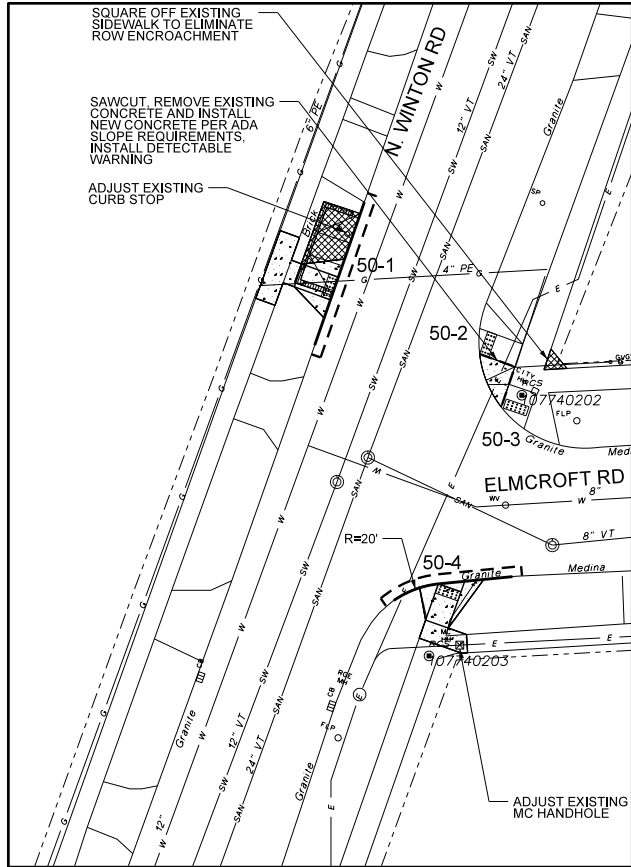


PROJECT TITLE		STREET IMPROVEMENT PROGRAM RESIDENTIAL CURB RAMPS CULVER RD EAST TO CITY LINE	
PROJECT NO.		11	
DRAWING NO.		11	
ISSUED		12/21/2018	DATE
CHECKED		L. REYES	BY
DRAWN		K. BATZ	DATE
DESIGN		F. BONN/PE	REVISION
SCALE		1" = 20'	NO.
PROJECT NUMBER		19106	NO.
DRAWING TITLE		CURB RAMPS 41-1 THRU 48-3 (SITE MAPS 41 THRU 48)	
DRAWING NO.		11	
OF		00	
DEPARTMENT OF ENVIRONMENTAL SERVICES ARCHITECTURE AND ENGINEERING SERVICES CITY OF ROCHESTER, NEW YORK		ASSISTANT MANAGER OF STREET DESIGN LISA Y. REYES INTERIM CITY ENGINEER HOLLY E. BARRETT, P.E.	
SEED FILE DATE		OCTOBER 29, 2018	

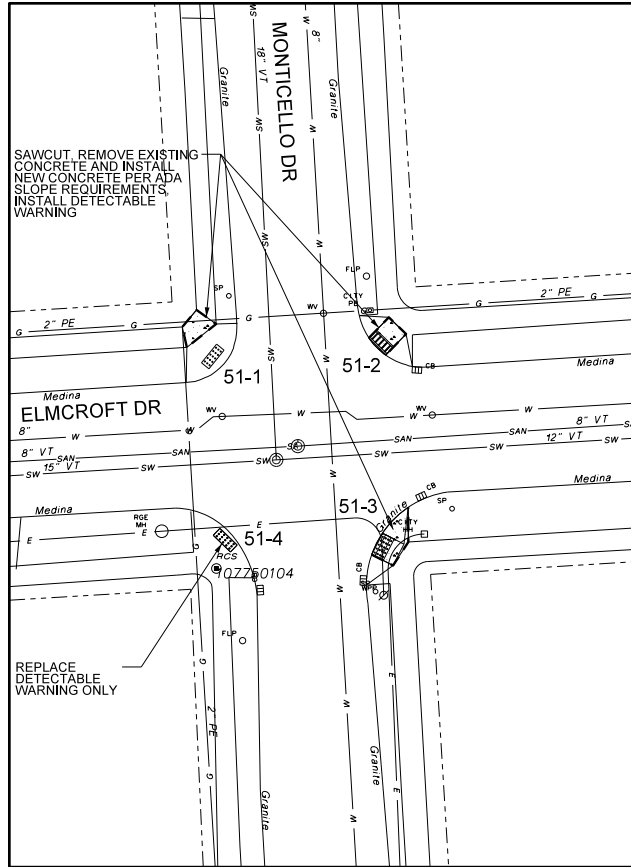




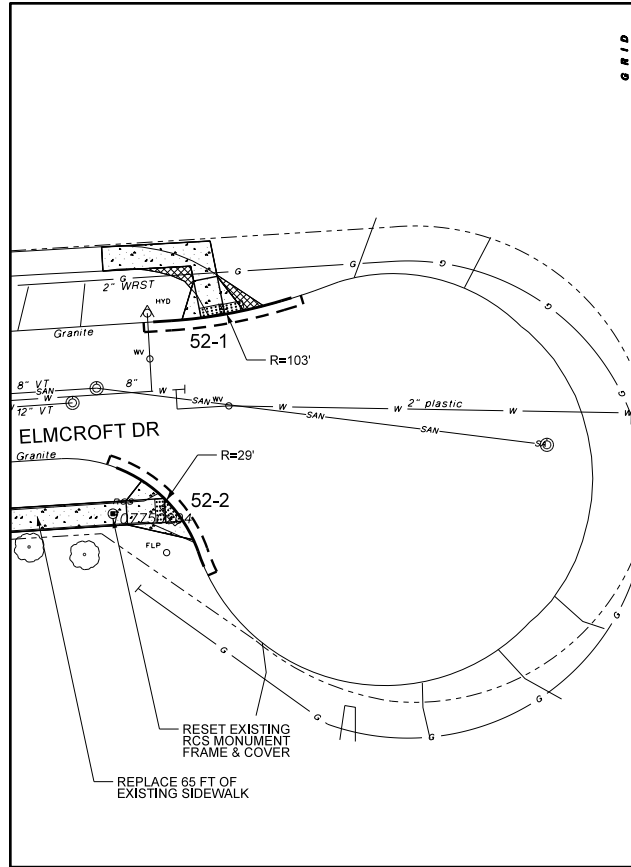
SITE MAP 49



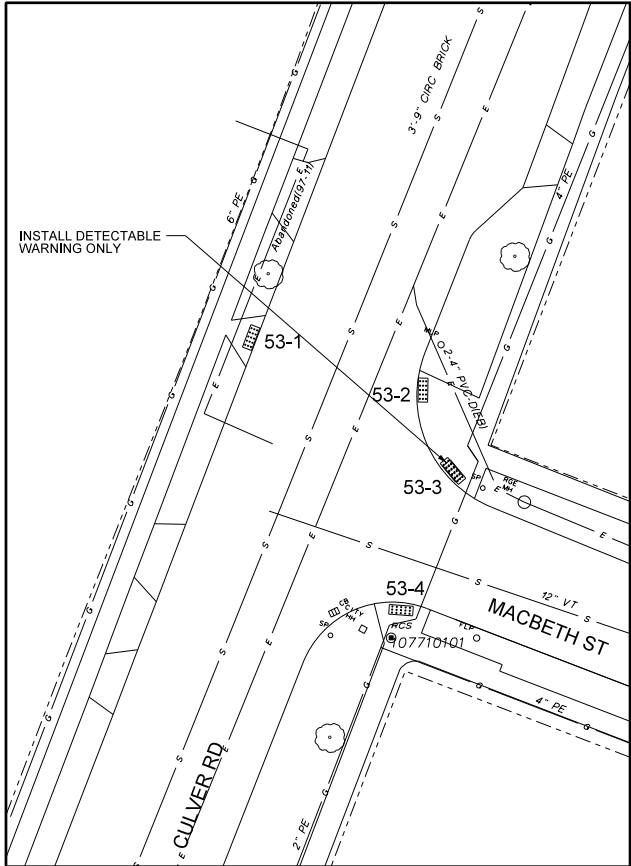
SITE MAP 50



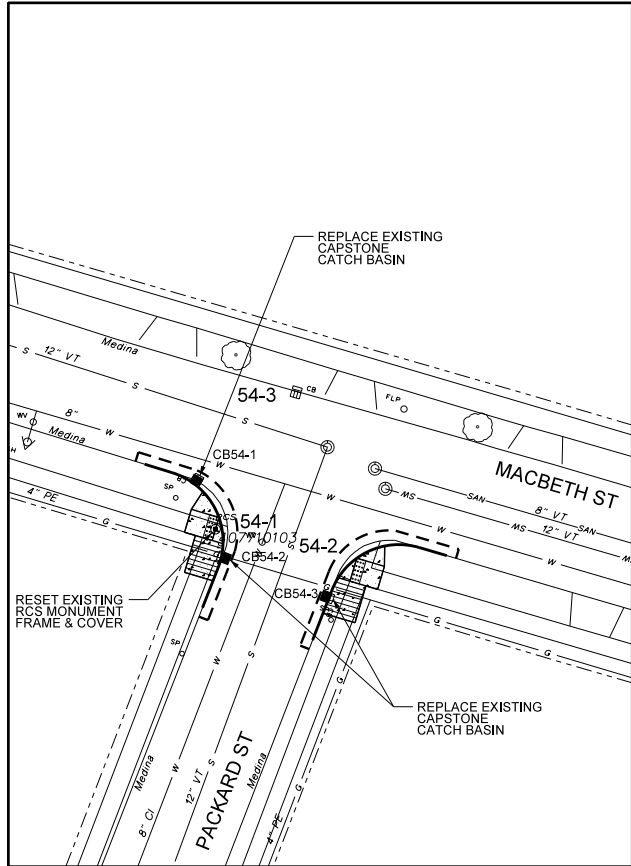
SITE MAP 51



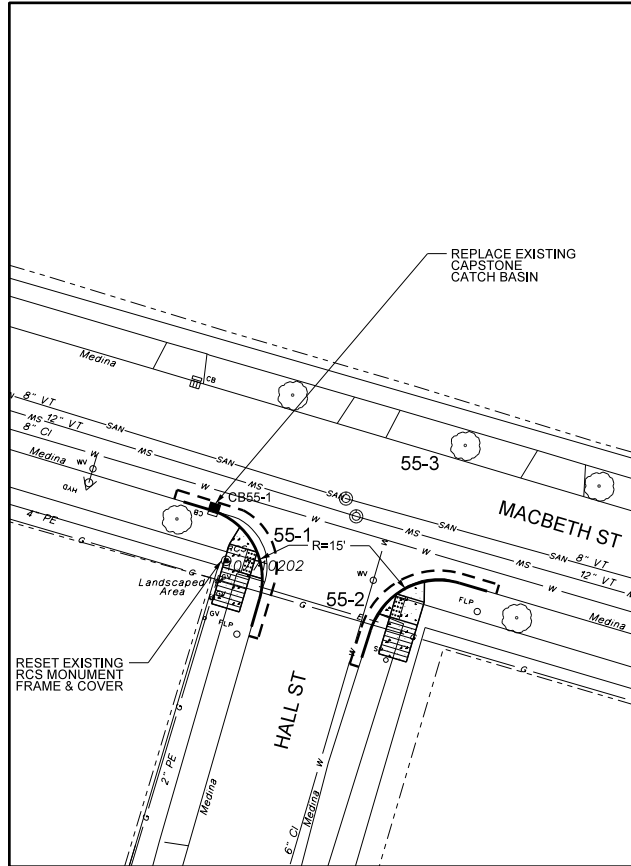
SITE MAP 52



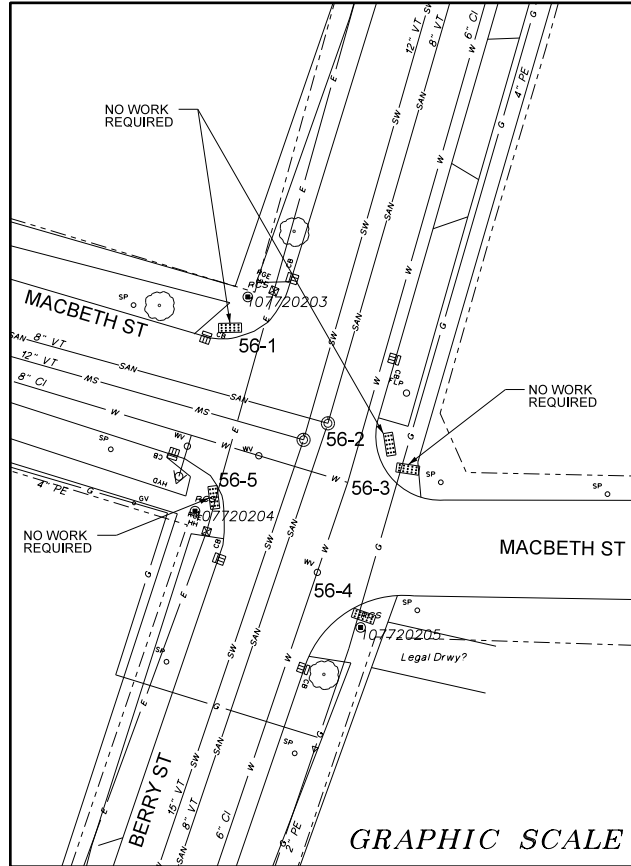
SITE MAP 53



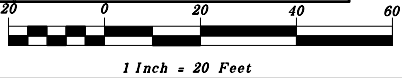
SITE MAP 54



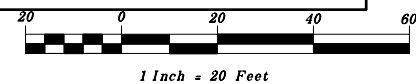
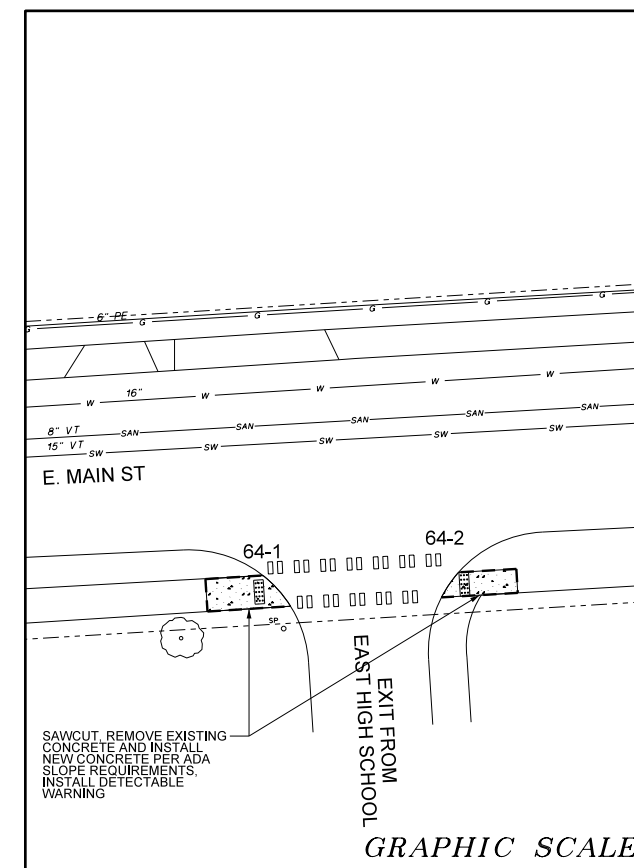
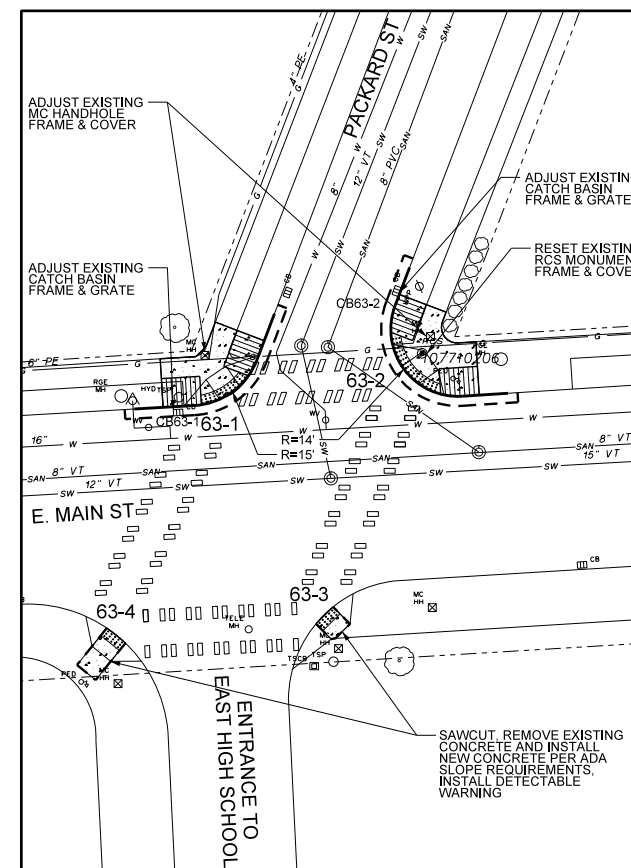
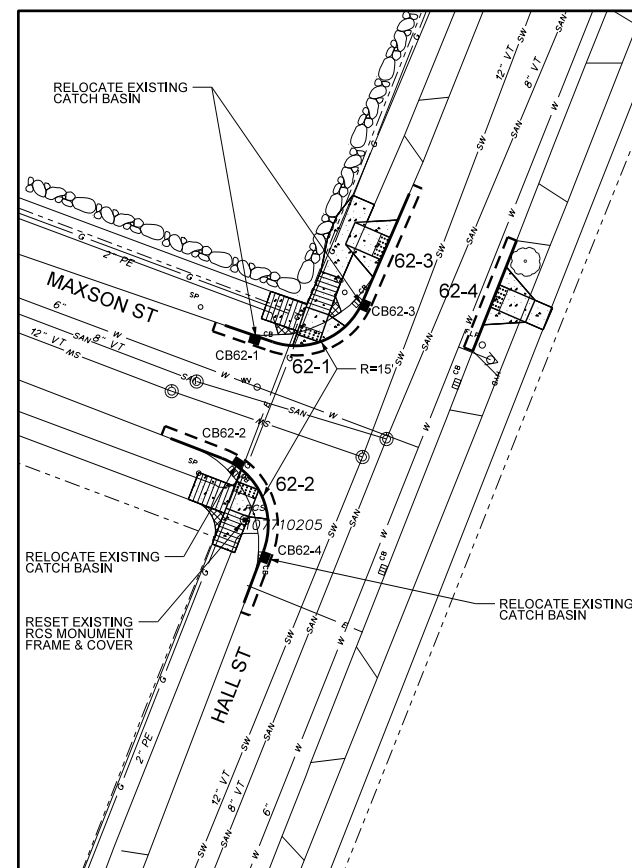
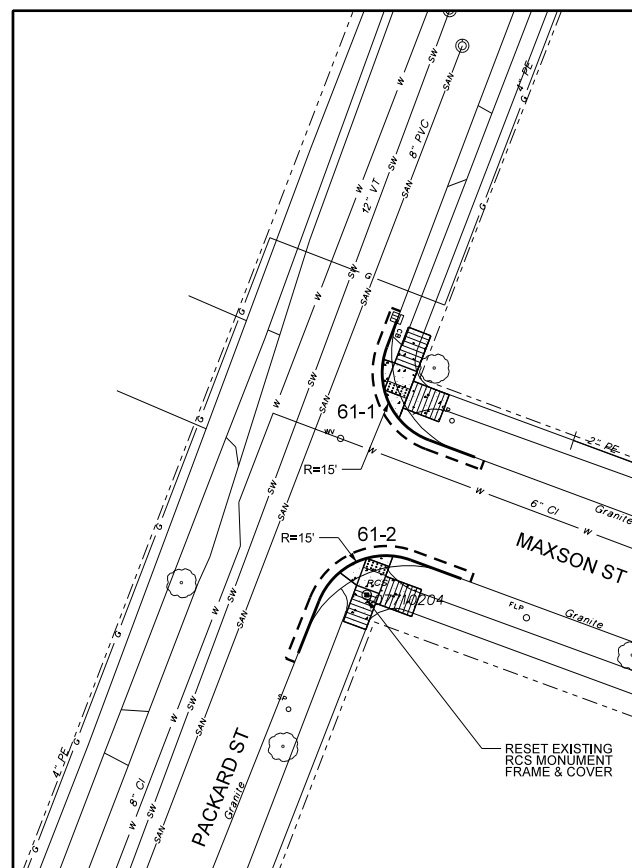
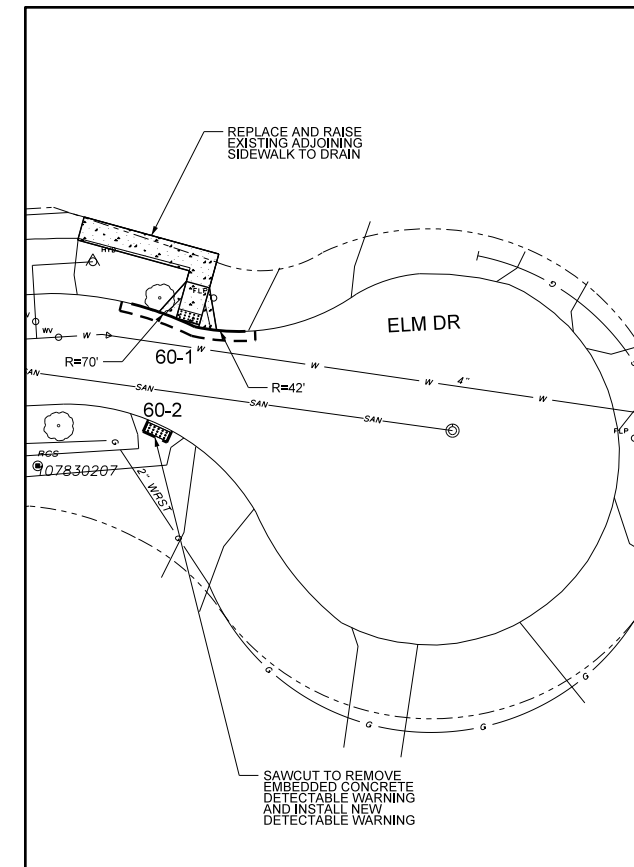
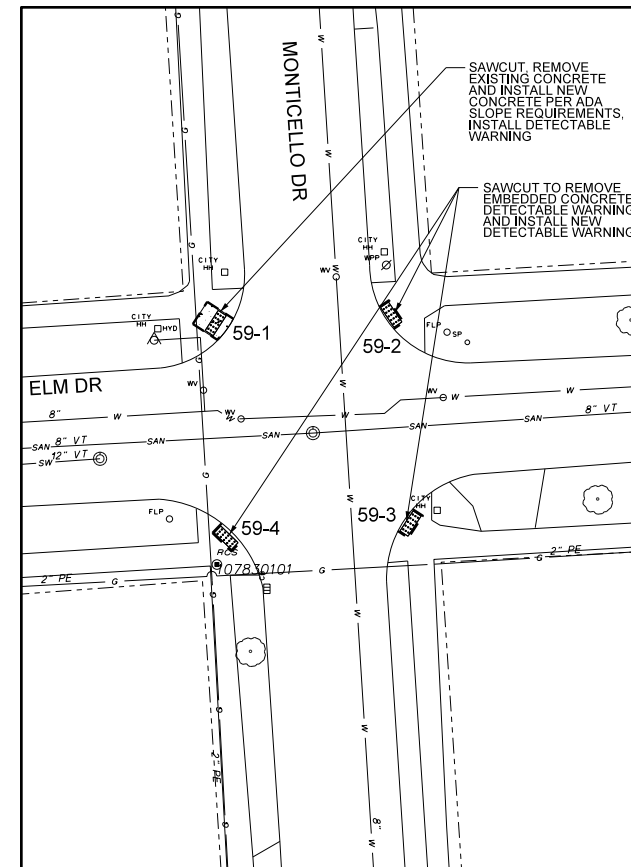
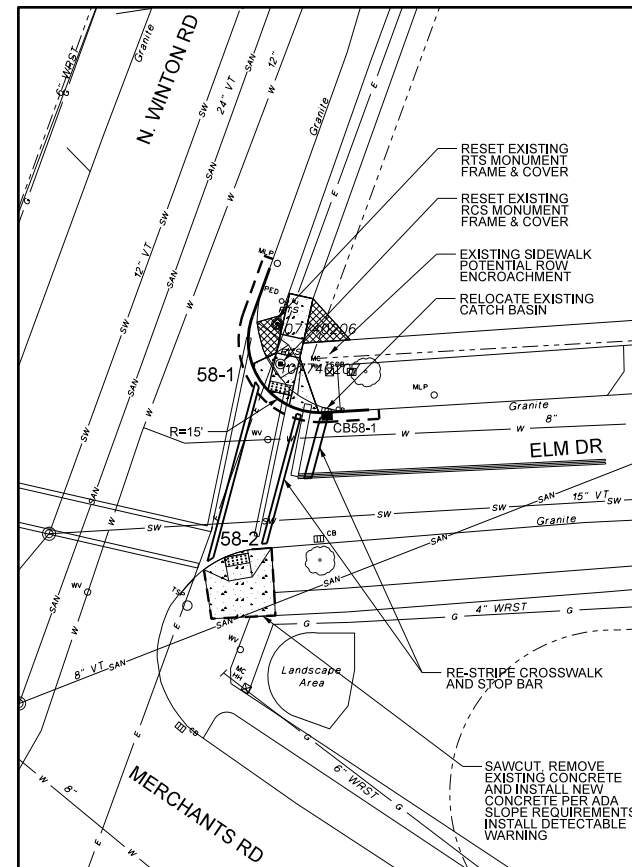
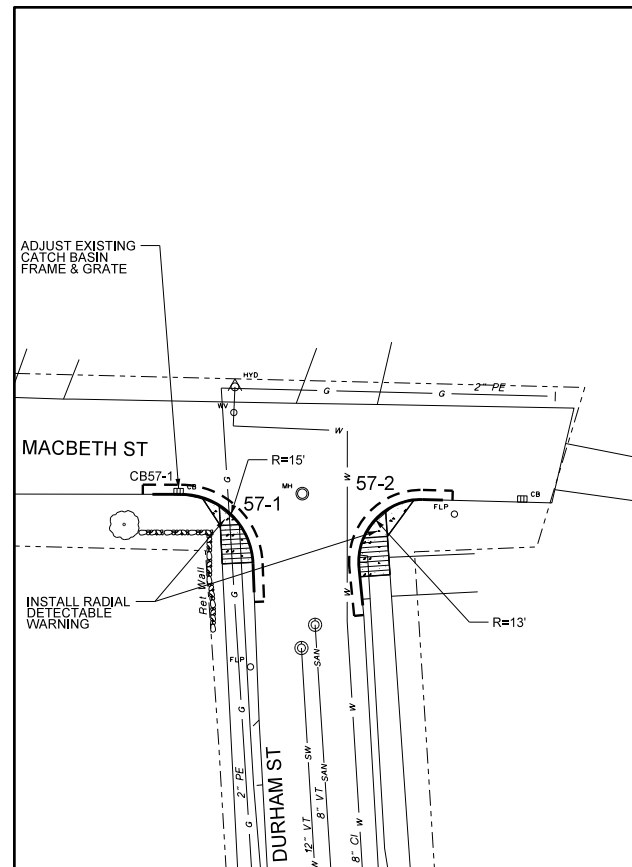
SITE MAP 55

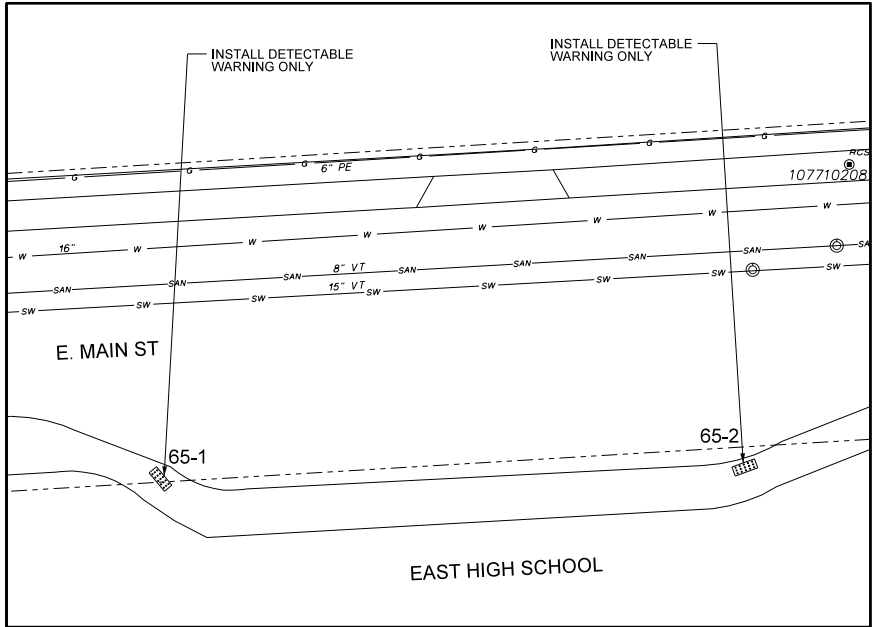


SITE MAP 56

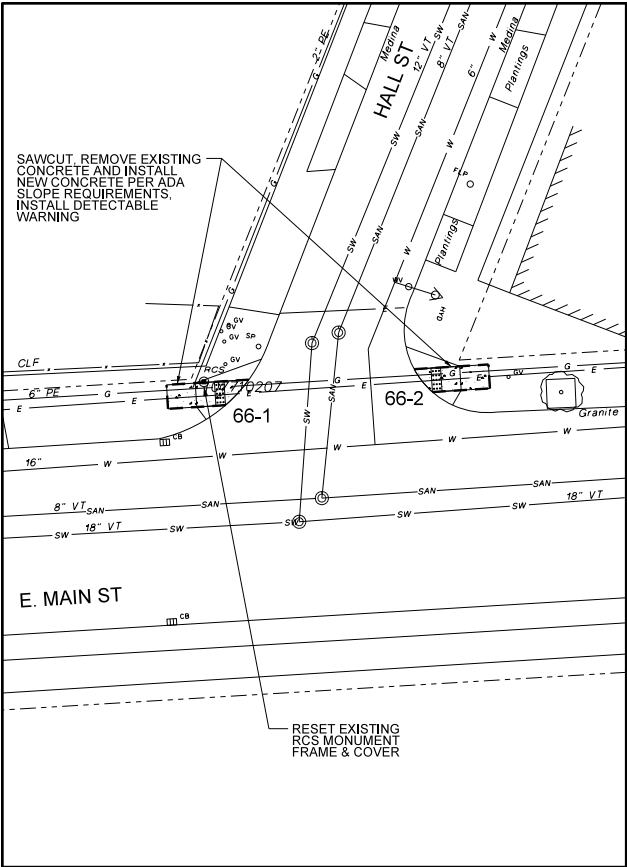


PROJECT TITLE		STREET IMPROVEMENT PROGRAM RESIDENTIAL CURB RAMPS CULVER RD EAST TO CITY LINE	
PROJECT NO.		12/21/2018	
ISSUED		12/21/2018	
CHECKED		L. REYES	DATE
DRAWN		K. BATZ	BY
DESIGN		F. BONN/PE	REVISION
SCALE		1" = 20'	NO.
PROJECT NUMBER		19106	DATE
DRAWING TITLE		CURB RAMPS 49-1 THRU 56-5 (SITE MAPS 49 THRU 56)	
DRAWING NO.		12	00
OF			
Department of Environmental Services Architecture and Engineering Services City of Rochester, New York		ASSISTANT MANAGER OF STREET DESIGN LISA Y. REYES INTERIM CITY ENGINEER HOLLY E. BARRETT, P.E.	
SEED FILE DATE		OCTOBER 29, 2018	

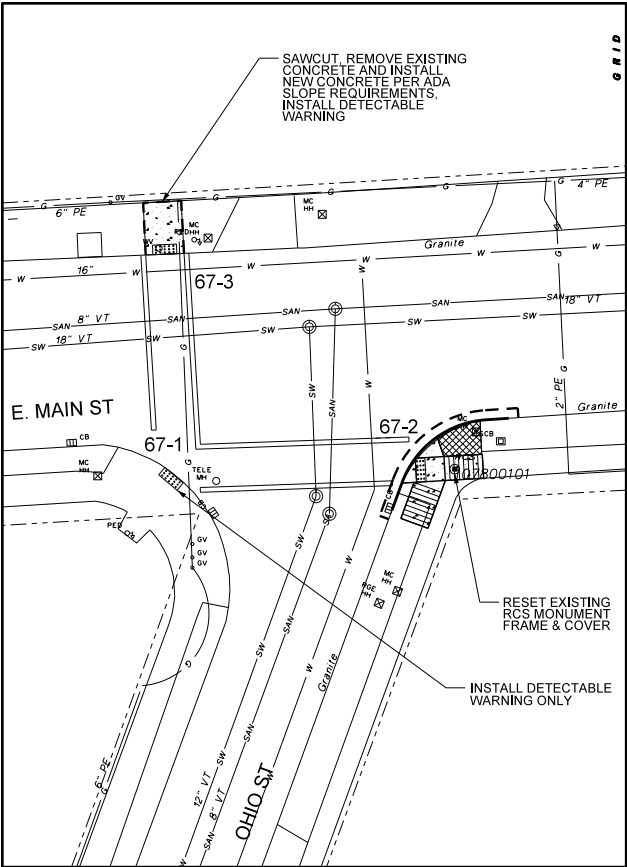




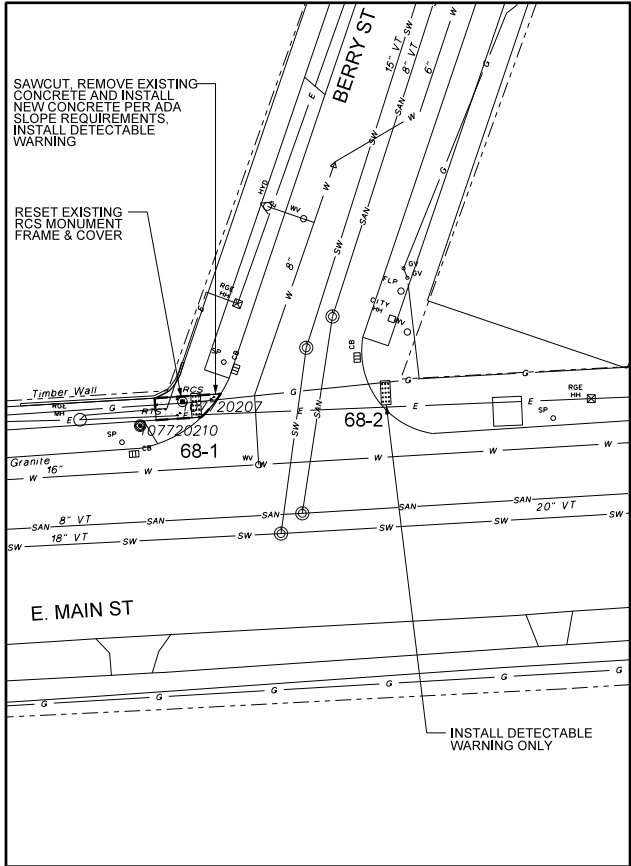
SITE MAP 65



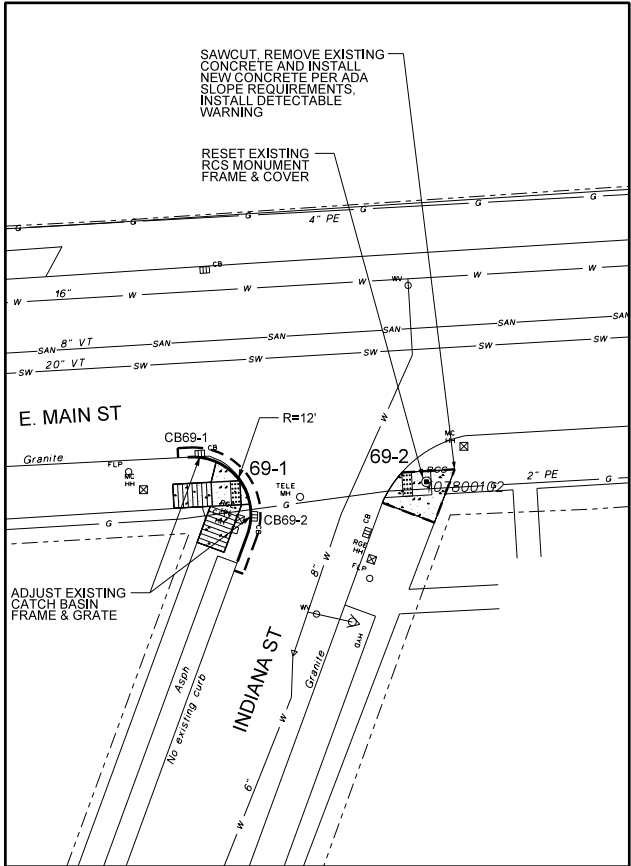
SITE MAP 66



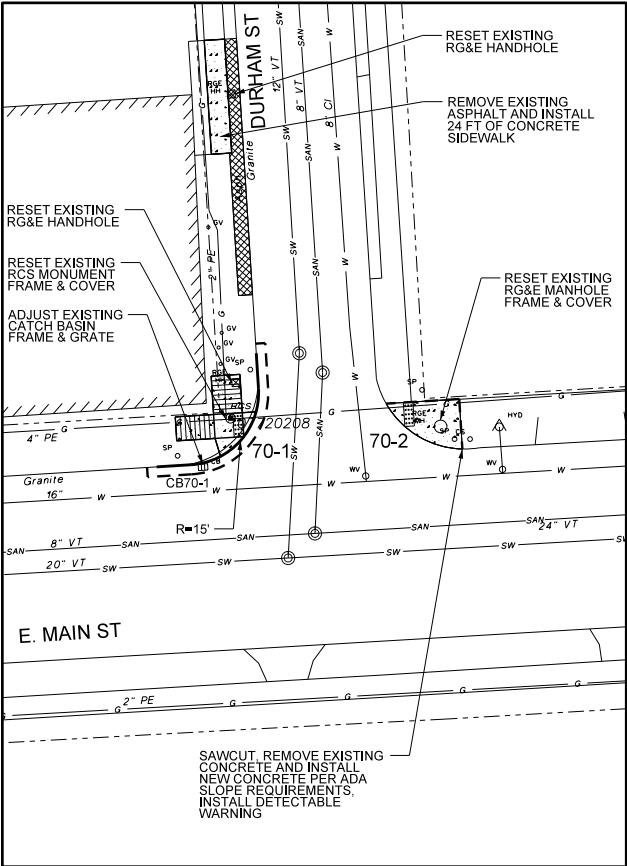
SITE MAP 67



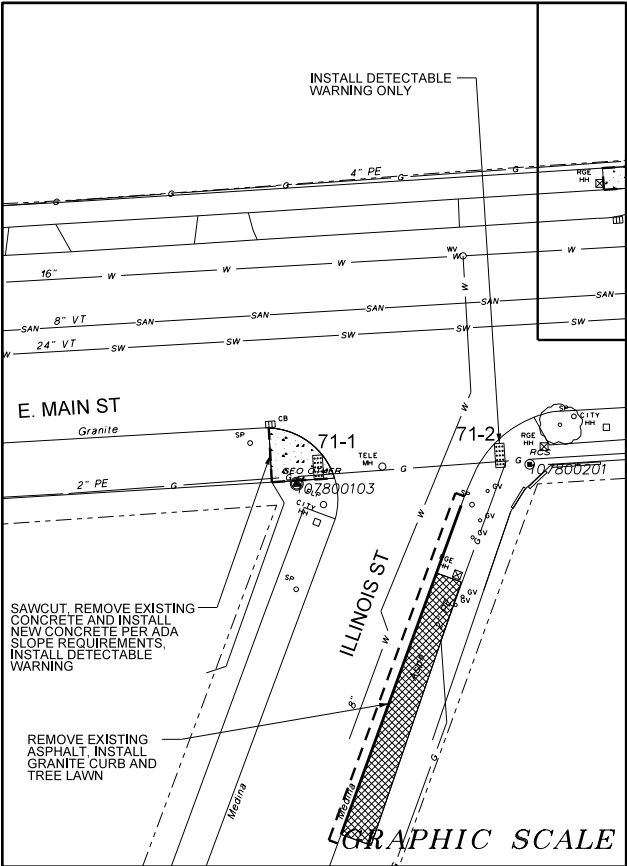
SITE MAP 68



SITE MAP 69

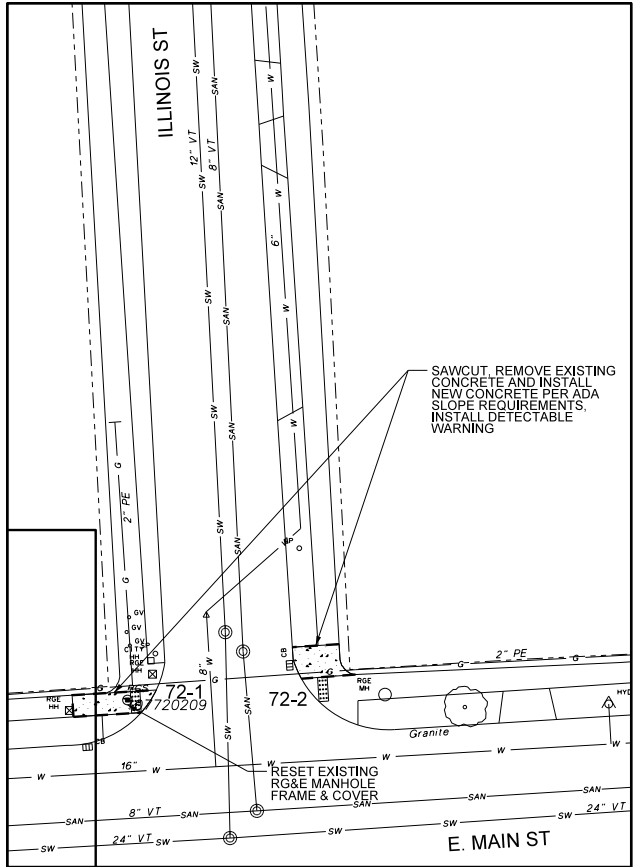


SITE MAP 70

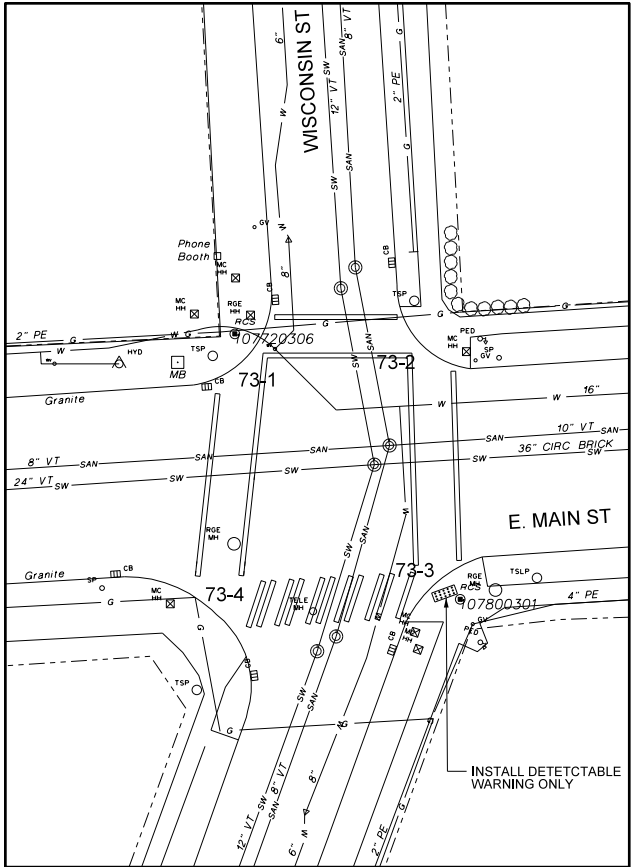


SITE MAP 71

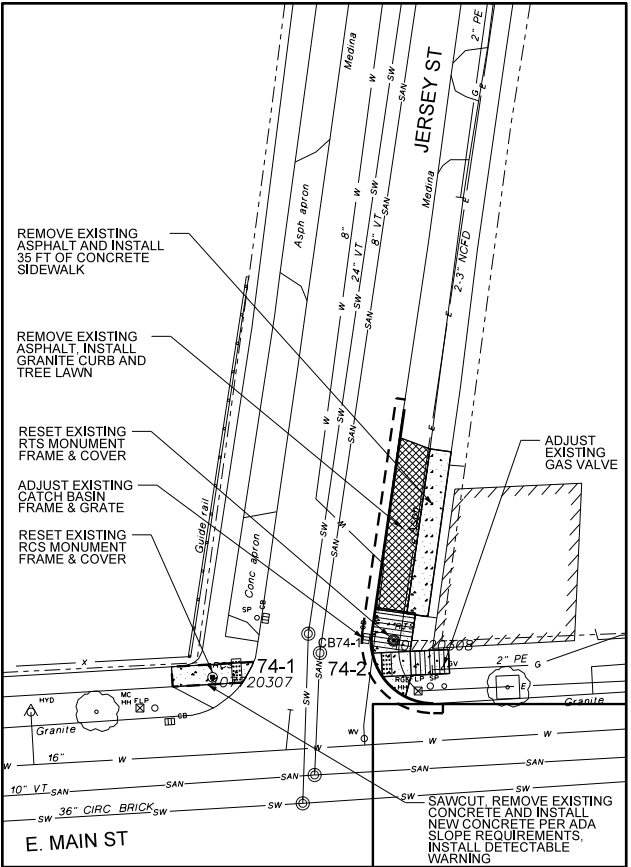
Department of Environmental Services Architecture and Engineering Services City of Rochester, New York		ASSISTANT MANAGER OF STREET DESIGN LISA Y. REYES INTERIM CITY ENGINEER HOLLY E. BARRETT, P.E.		SEED FILE DATE OCTOBER 29, 2018	
PROJECT TITLE STREET IMPROVEMENT PROGRAM RESIDENTIAL CURB RAMPS CULVER RD EAST TO CITY LINE					
ISSUED	12/21/2018	CHECKED	L. REYES	BY	DATE
		DRAWN	K. BATZ		
		DESIGN	F. BONN/PE		
		SCALE	1" = 20'		
		PROJECT NUMBER	19106	NO.	REVISION
DRAWING TITLE CURB RAMPS 65-1 THRU 71-2 (SITE MAPS 65 THRU 71)		DRAWING NO. 14			00



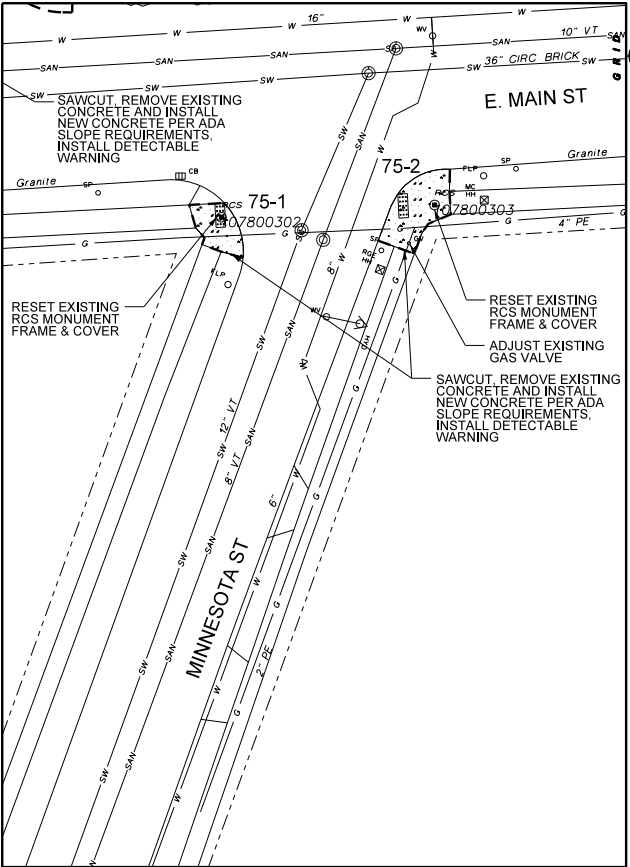
SITE MAP 72



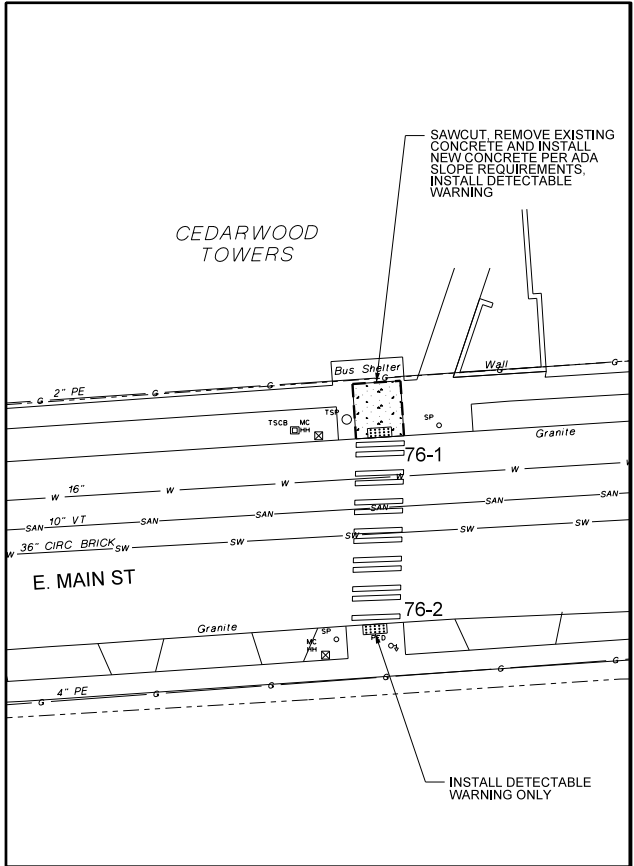
SITE MAP 73



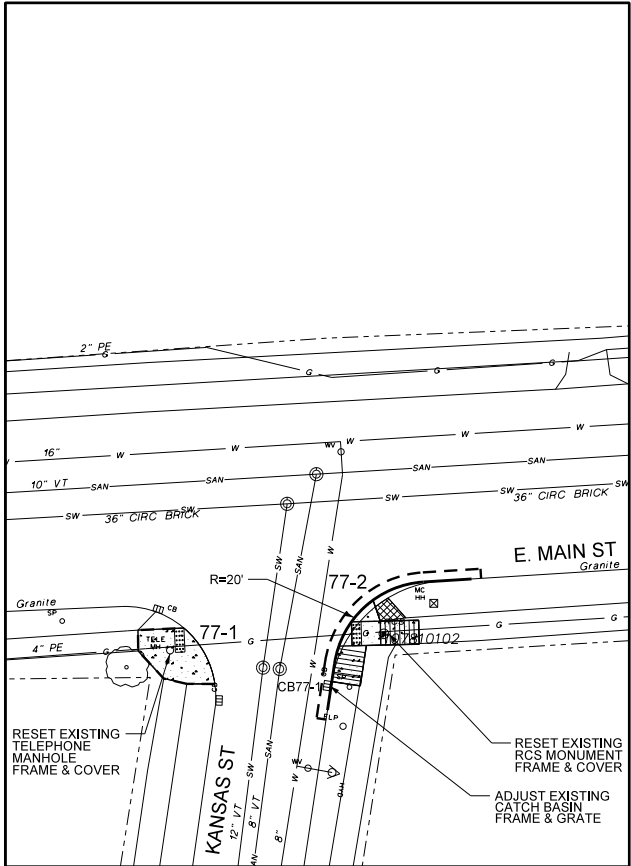
SITE MAP 74



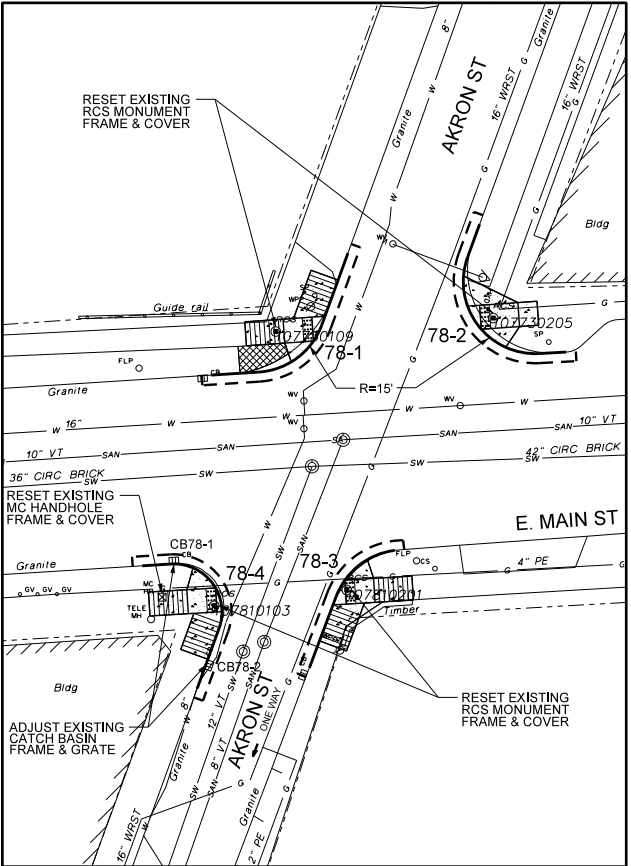
SITE MAP 75



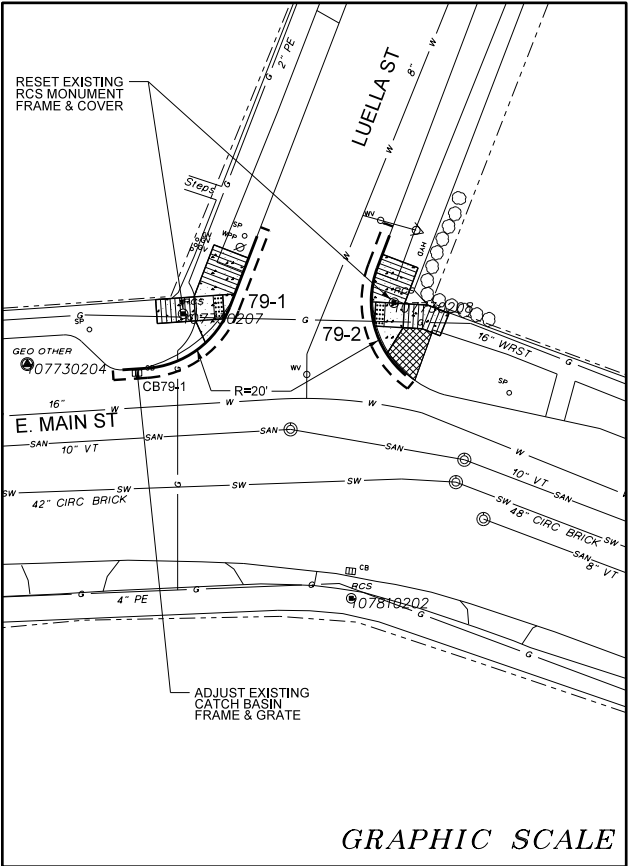
SITE MAP 76



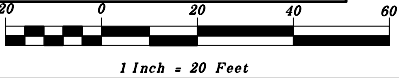
SITE MAP 77



SITE MAP 78

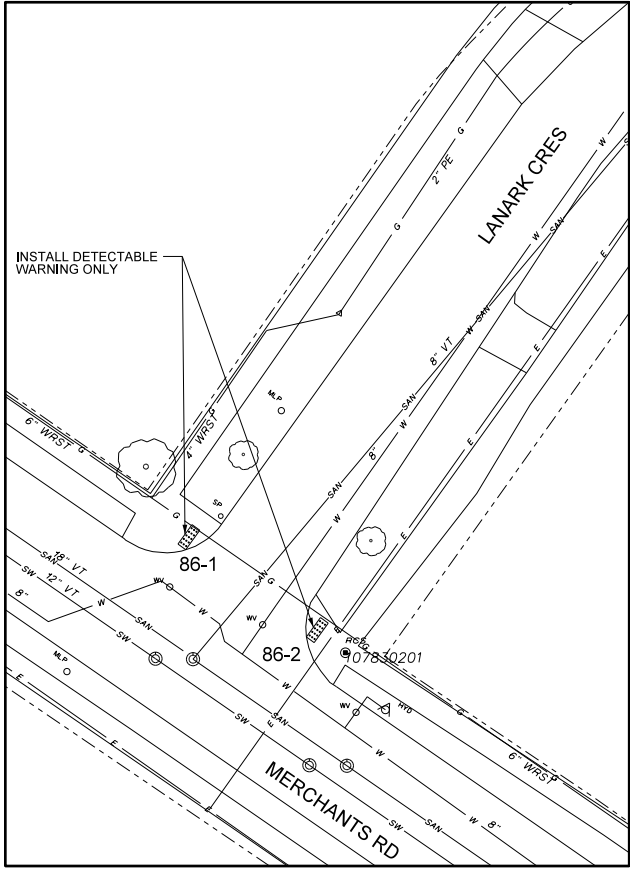


SITE MAP 79

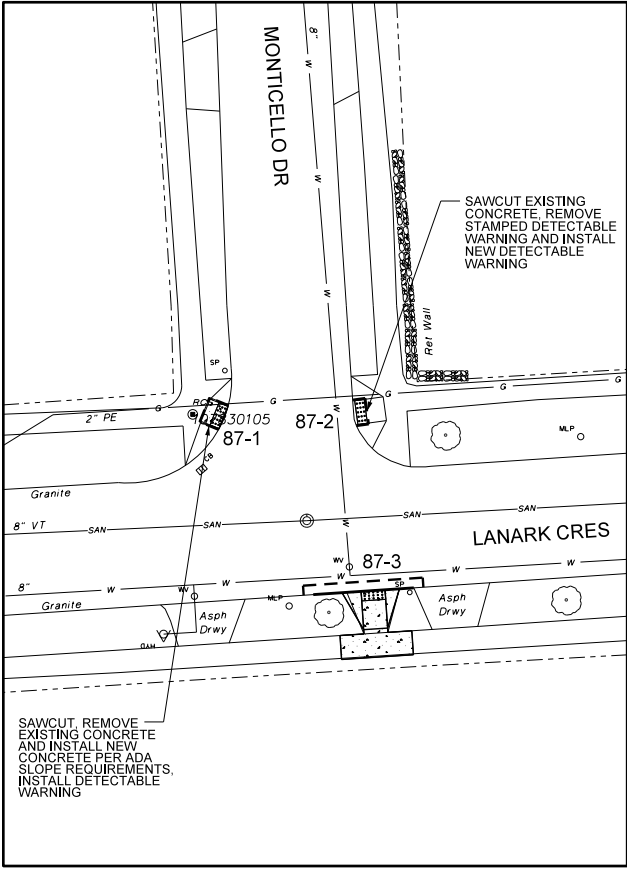


PROJECT TITLE		STREET IMPROVEMENT PROGRAM RESIDENTIAL CURB RAMPS CULVER RD EAST TO CITY LINE	
PROJECT NO.		1221/2018	
ISSUED		12/21/2018	
CHECKED		L. REYES	
DRAWN		K. BATZ	
DESIGN		F. BONN/PE	
SCALE		1" = 20'	
PROJECT NUMBER		19106	
NO.		REVISION	
BY		DATE	
DEPARTMENT OF ENVIRONMENTAL SERVICES ARCHITECTURE AND ENGINEERING SERVICES CITY OF ROCHESTER, NEW YORK		ASSISTANT MANAGER OF STREET DESIGN LISA Y. REYES INTERIM CITY ENGINEER HOLLY E. BARRETT, P.E.	
SEED FILE DATE		OCTOBER 29, 2018	

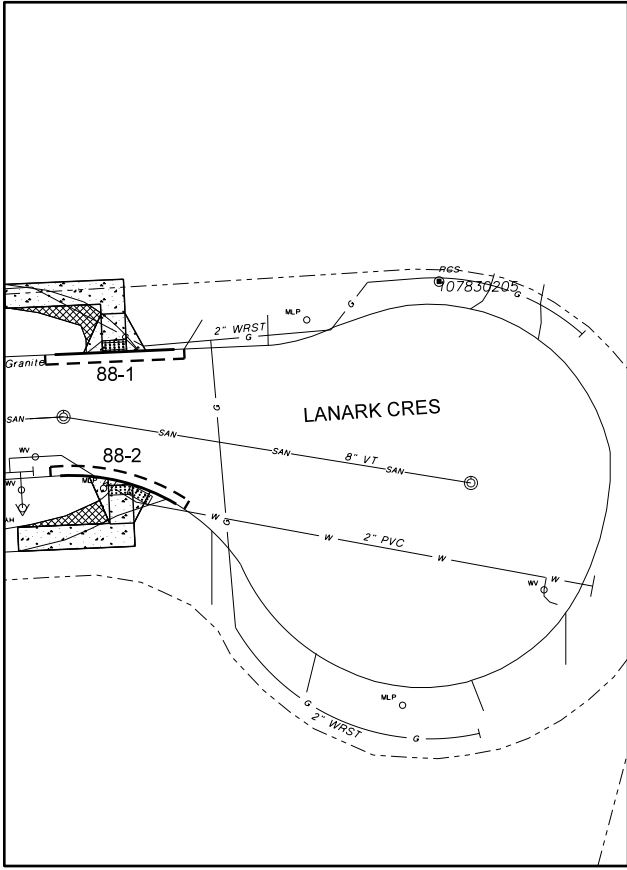




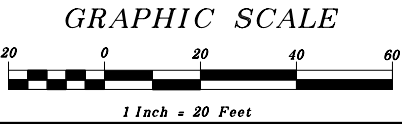
SITE MAP 86



SITE MAP 87



SITE MAP 88



DRAWING TITLE		CURB RAMPS 86-1 THRU 88-2 (SITE MAPS 86 THRU 88)	
DRAWING NO.		17 OF 00	
PROJECT TITLE		STREET IMPROVEMENT PROGRAM RESIDENTIAL CURB RAMPS CULVER RD EAST TO CITY LINE	
ISSUED		12/21/2018	
CHECKED		L. REYES	
DRAWN		K. BATZ	
DESIGN		F. BONN/PE	
SCALE		1" = 20'	
PROJECT NUMBER		19106	
		NO.	REVISION
		BY	DATE
Department of Environmental Services Architecture and Engineering Services City of Rochester, New York		ASSISTANT MANAGER OF STREET DESIGN INTERIM CITY ENGINEER	
Department of Environmental Services Architecture and Engineering Services City of Rochester, New York		LISA Y. REYES HOLLY E. BARRETT, P.E.	
SEED FILE DATE		OCTOBER 29, 2018	

## MONUMENTS

SITE MAP NUMBER	TYPE AND NUMBER	QUADRANT	MAIN STREET	INTERSECTING STREET	DISPOSITION	ITEM NUMBER
3	RCS 107590103	NW	N.WINTON	COLEBOURNE	RESET EXISTING MONUMENT FRAME AND COVER	
3	RCS 107590204	SE	N.WINTON	COLEBOURNE	RESET EXISTING MONUMENT FRAME AND COVER	
4	RCS 107640101	SW	DUKE	MC KINLEY	RESET EXISTING MONUMENT FRAME AND COVER	
5	RCS 107640102	SW	LOCKWOOD	MC KINLEY	RESET EXISTING MONUMENT FRAME AND COVER	
6	RCS 107640103	SE	CHATFIELD	MC KINLEY	RESET EXISTING MONUMENT FRAME AND COVER	
7	RCS 107640104	SW	DYSON	MC KINLEY	RESET EXISTING MONUMENT FRAME AND COVER	
8	RCS 107590202	NW	N.WINTON	TRYON	RESET EXISTING MONUMENT FRAME AND COVER	
9	RCS 107590203	SE	LOUDISA	TRYON	RESET EXISTING MONUMENT FRAME AND COVER	
10	RCS 107650301	SE	FAIRFAX	COLONIAL	EXISTING MONUMENT TO REMAIN. NO WORK ANTICIPATED. PROTECT	
11	RTS 107670101	E	N.WINTON	COLONIAL	EXISTING MONUMENT TO REMAIN. NO WORK ANTICIPATED. PROTECT	
11	RCS 107660101	SW	N.WINTON	COLONIAL	RESET EXISTING MONUMENT FRAME AND COVER	
11	RCS 107660102	W	N.WINTON	COLONIAL	EXISTING MONUMENT TO REMAIN. NO WORK ANTICIPATED. PROTECT	
11	RCS 107670102	E	N.WINTON	COLONIAL	EXISTING MONUMENT TO REMAIN. NO WORK ANTICIPATED. PROTECT	
13	RCS 107640106	NW	DUKE	GRAND	RESET EXISTING MONUMENT FRAME AND COVER	
14	RCS 107640107	NE	LOCKWOOD	GRAND	RESET EXISTING MONUMENT FRAME AND COVER	
15	RCS 107640108	NE	CHATFIELD	GRAND	RESET EXISTING MONUMENT FRAME AND COVER	
16	RCS 107640109	NW	DYSON	GRAND	RESET EXISTING MONUMENT FRAME AND COVER	
16	RCS 107640110	NE	DYSON	GRAND	EXISTING MONUMENT TO REMAIN. NO WORK ANTICIPATED. PROTECT	
17	RCS 107650302	SE	FAIRFAX	DALKEITH	EXISTING MONUMENT TO REMAIN. NO WORK ANTICIPATED. PROTECT	
18	RCS 107660201	SW	N.WINTON	DALKEITH	RESET EXISTING MONUMENT FRAME AND COVER	
20	RCS 107640301	SE	CLARK	GARSON	RESET EXISTING MONUMENT FRAME AND COVER	
21	RCS 107640302	SW	ALVORD	GARSON	RESET EXISTING MONUMENT FRAME AND COVER	
23	RCS 107640303	SW	SCHANCK	GARSON	RESET EXISTING MONUMENT FRAME AND COVER	
24	RCS 107640203	NW	WISCONSIN	GARSON	EXISTING MONUMENT TO REMAIN. NO WORK ANTICIPATED. PROTECT	
24	RCS 107640304	SW	WISCONSIN	GARSON	RESET EXISTING MONUMENT FRAME AND COVER	
25	RCS 107650108	SW	JERSEY	GARSON	RESET EXISTING MONUMENT FRAME AND COVER	
26	RCS 107650303	SE	FAIRFAX	WILSONIA	RESET EXISTING MONUMENT FRAME AND COVER	
28	GEO OTHER 107660301	SW	N.WINTON	WILSONIA	EXISTING MONUMENT TO REMAIN. NO WORK ANTICIPATED. PROTECT	
28	RCS 107660302	SW	N.WINTON	WILSONIA	RESET EXISTING MONUMENT FRAME AND COVER	
29	RSC 107670103	NE	N.WINTON	GLEN PKWY	RESET EXISTING MONUMENT FRAME AND COVER	
30	RCS 107660303	SW	COLERIDGE	GLEN PKWY	EXISTING MONUMENT TO REMAIN. NO WORK ANTICIPATED. PROTECT	
31	RCS 107650304	NE	FAIRFAX	MERWIN	EXISTING MONUMENT TO REMAIN. NO WORK ANTICIPATED. PROTECT	
31	RCS 107730209	SE	FAIRFAX	MERWIN	EXISTING MONUMENT TO REMAIN. NO WORK ANTICIPATED. PROTECT	
33	RCS 107740102	SW	N.WINTON	MERWIN	RESET EXISTING MONUMENT FRAME AND COVER	
33	GEO OTHER 107740101	SW	N.WINTON	MERWIN	EXISTING MONUMENT TO REMAIN. NO WORK ANTICIPATED. PROTECT	
34	RCS 107750101	SE	EDMONTON	COLERIDGE	EXISTING MONUMENT TO REMAIN. NO WORK ANTICIPATED. PROTECT	
36	RCS 107670104	W	MONTICELLO	EDMONTON	EXISTING MONUMENT TO REMAIN. NO WORK ANTICIPATED. PROTECT	
36	RCS 107750102	SW	MONTICELLO	EDMONTON	RESET EXISTING MONUMENT FRAME AND COVER	
38	RCS 107740105	NW	N.WINTON	ROYLESTON	RESET EXISTING MONUMENT FRAME AND COVER	
38	RCS 107740201	SE	N.WINTON	WINSTEAD	EXISTING MONUMENT TO REMAIN. NO WORK ANTICIPATED. PROTECT	
40	RCS 107750103	SW	MONTICELLO	WINSTEAD	RESET EXISTING MONUMENT FRAME AND COVER	
40	RCS 107750201	NE	MONTICELLO	WINSTEAD	RESET EXISTING MONUMENT FRAME AND COVER	
41	RCS 107710105	SW	CULVER	CEDARWOOD	EXISTING MONUMENT TO REMAIN. NO WORK ANTICIPATED. PROTECT	
41	RCS 107710201	SE	CULVER	CEDARWOOD	EXISTING MONUMENT TO REMAIN. NO WORK ANTICIPATED. PROTECT	
42	RCS 107720201	SW	BERRY	CEDARWOOD	RESET EXISTING MONUMENT FRAME AND COVER	
43	RCS 107720101	NE	CEDARWOOD	SODUS	RESET EXISTING MONUMENT FRAME AND COVER	
44	RCS 107720202	SW	ILLINOIS	CEDARWOOD	RESET EXISTING MONUMENT FRAME AND COVER	
45	RCS 107720301	SW	WISCONSIN	CEDARWOOD	RESET EXISTING MONUMENT FRAME AND COVER	
45	RCS 107720102	NE	WISCONSIN	CEDARWOOD	RESET EXISTING MONUMENT FRAME AND COVER	
46	RCS 107720302	SW	JERSEY	CEDARWOOD	EXISTING MONUMENT TO REMAIN. NO WORK ANTICIPATED. PROTECT	
46	RCS 107730104	NE	JERSEY	CEDARWOOD	EXISTING MONUMENT TO REMAIN. NO WORK ANTICIPATED. PROTECT	
47	RCS 107730105	NW	MILDORF	CEDARWOOD	EXISTING MONUMENT TO REMAIN. NO WORK ANTICIPATED. PROTECT	
48	RCS 107730106	NW	BELGARD	CEDARWOOD	EXISTING MONUMENT TO REMAIN. NO WORK ANTICIPATED. PROTECT	
48	RCS 107730107	N	BELGARD	CEDARWOOD	EXISTING MONUMENT TO REMAIN. NO WORK ANTICIPATED. PROTECT	
49	RCS 107730108	NW	AKRON	CEDARWOOD	EXISTING MONUMENT TO REMAIN. NO WORK ANTICIPATED. PROTECT	
50	RCS 107740202	NE	N.WINTON	ELMCROFT	EXISTING MONUMENT TO REMAIN. NO WORK ANTICIPATED. PROTECT	
50	RCS 107740203	SE	N.WINTON	ELMCROFT	EXISTING MONUMENT TO REMAIN. NO WORK ANTICIPATED. PROTECT	
51	RCS 107750104	SW	MONTICELLO	ELMCROFT	EXISTING MONUMENT TO REMAIN. NO WORK ANTICIPATED. PROTECT	
52	RCS 107750204	S	ELMCROFT	ELMCROFT	RESET EXISTING MONUMENT FRAME AND COVER	
53	RCS 107710101	SE	CULVER	MACBETH	EXISTING MONUMENT TO REMAIN. NO WORK ANTICIPATED. PROTECT	
54	RCS 107710103	S	PACKARD	MACBETH	RESET EXISTING MONUMENT FRAME AND COVER	
55	RCS 107710202	SW	HALL	MACBETH	RESET EXISTING MONUMENT FRAME AND COVER	
56	RCS 107720203	NW	BERRY	MACBETH	EXISTING MONUMENT TO REMAIN. NO WORK ANTICIPATED. PROTECT	
56	RCS 107720204	SW	BERRY	MACBETH	EXISTING MONUMENT TO REMAIN. NO WORK ANTICIPATED. PROTECT	
56	RCS 107720205	SE	BERRY	MACBETH	EXISTING MONUMENT TO REMAIN. NO WORK ANTICIPATED. PROTECT	
58	RTS 107740206	NE	N.WINTON	ELM	RESET EXISTING MONUMENT FRAME AND COVER	
58	RCS 107740207	NE	N.WINTON	ELM	RESET EXISTING MONUMENT FRAME AND COVER	
59	RCS 107830101	SW	MONTICELLO DR	ELM	EXISTING MONUMENT TO REMAIN. NO WORK ANTICIPATED. PROTECT	
60	RCS 107830207	S	ELM	ELM	EXISTING MONUMENT TO REMAIN. NO WORK ANTICIPATED. PROTECT	
61	RCS 107710204	SE	PACKARD	MAXSON	RESET EXISTING MONUMENT FRAME AND COVER	
62	RCS 107710205	SW	HALL	MAXSON	RESET EXISTING MONUMENT FRAME AND COVER	
63	RCS 107710206	NE	PACKARD	E.MAIN	RESET EXISTING MONUMENT FRAME AND COVER	
65	RCS 107710208	N	E.MAIN	E.MAIN	EXISTING MONUMENT TO REMAIN. NO WORK ANTICIPATED. PROTECT	
66	RCS 107710207	NW	HALL	E.MAIN	RESET EXISTING MONUMENT FRAME AND COVER	
67	RCS 107800101	SE	OHIO	E.MAIN	RESET EXISTING MONUMENT FRAME AND COVER	
68	RCS 107720207	NW	BERRY	E.MAIN	RESET EXISTING MONUMENT FRAME AND COVER	
68	RTS 107720210	NW	BERRY	E.MAIN	EXISTING MONUMENT TO REMAIN. NO WORK ANTICIPATED. PROTECT	
69	RTS 107800102	SE	INDIANA	E.MAIN	RESET EXISTING MONUMENT FRAME AND COVER	
70	RCS 107720208	NW	DURHAM	E.MAIN	RESET EXISTING MONUMENT FRAME AND COVER	

## MONUMENTS

SITE MAP NUMBER	TYPE AND NUMBER	QUADRANT	MAIN STREET	INTERSECTING STREET	DISPOSITION	ITEM NUMBER
71	GEO OTHER 107800103	SW	ILLINOIS	E.MAIN	EXISTING MONUMENT TO REMAIN. NO WORK ANTICIPATED. PROTECT	
71	RCS 107800201	SE	ILLINOIS	E.MAIN	EXISTING MONUMENT TO REMAIN. NO WORK ANTICIPATED. PROTECT	
72	RCS 107720209	NW	ILLINOIS	E.MAIN	RESET EXISTING MONUMENT FRAME AND COVER	
73	RCS 107720306	NW	WISCONSIN	E.MAIN		
73	RCS 107800301	SE	WISCONSIN	E.MAIN		
74	RCS 107720307	NW	JERSEY	E.MAIN	RESET EXISTING MONUMENT FRAME AND COVER	
74	RTS 107720308	NE	JERSEY	E.MAIN	RESET EXISTING MONUMENT FRAME AND COVER	
75	RCS 107800302	SW	MINNESOTA	E.MAIN	RESET EXISTING MONUMENT FRAME AND COVER	
75	RCS 107800303	SE	MINNESOTA	E.MAIN	RESET EXISTING MONUMENT FRAME AND COVER	
77	RCS 107810102	SE	KANSAS	E.MAIN	RESET EXISTING MONUMENT FRAME AND COVER	
78	RCS 107730109	NW	AKRON	E.MAIN	RESET EXISTING MONUMENT FRAME AND COVER	
78	RCS 107730205	NE	AKRON	E.MAIN	RESET EXISTING MONUMENT FRAME AND COVER	
78	RCS 107810103	SW	AKRON	E.MAIN	RESET EXISTING MONUMENT FRAME AND COVER	
78	RCS 107810201	SE	AKRON	E.MAIN	RESET EXISTING MONUMENT FRAME AND COVER	
79	RCS 107730207	NW	LUELLA	E.MAIN	RESET EXISTING MONUMENT FRAME AND COVER	
79	RCS 107730208	NE	LUELLA	E.MAIN	RESET EXISTING MONUMENT FRAME AND COVER	
79	RCS 107810202	SE	LUELLA	E.MAIN	EXISTING MONUMENT TO REMAIN. NO WORK ANTICIPATED. PROTECT	
80	RCS 107730206	NW	WOODSTOCK	E.MAIN	RESET EXISTING MONUMENT FRAME AND COVER	
80	RCS 107810301	SE	WOODSTOCK	E.MAIN	RESET EXISTING MONUMENT FRAME AND COVER	
81	RCS 107820110	NW	N.WINTON	E.MAIN		
81	RCS 107820105	SW	N.WINTON	E.MAIN		
81	RTS 107820104	NW	N.WINTON	E.MAIN		
81	GEO 107820103	NW	N.WINTON	E.MAIN		
82	RCS 107820203	SE	QUENTIN	MERCHANTS		
83	RCS 107830102	SE	BERWICK	MERCHANTS		
84	RCS 107830104	SW	MONTICELLO	BERWICK	RESET EXISTING MONUMENT FRAME AND COVER	
85	RCS 107830206	W	BERWICK	BERWICK	EXISTING MONUMENT TO REMAIN. NO WORK ANTICIPATED. PROTECT	
86	RCS 107830201	NE	LANARK	MERCHANTS		
87	RCS 107830105	NW	MONTICELLO	LANARK	EXISTING MONUMENT TO REMAIN. NO WORK ANTICIPATED. PROTECT	
88	RCS 107830205	N	LANARK	LANARK	EXISTING MONUMENT TO REMAIN. NO WORK ANTICIPATED. PROTECT	

## ITEM NUMBERS:

S626.02 - HORIZONTAL CONTROL SURVEY MONUMENT  
S626.04 - VERTICAL ADJUSTMENT OF EXISTING SURVEY MONUMENT  
S626.05 - REMOVE EXISTING SURVEY MONUMENT  
S626.06 - INSTALL NEW MONUMENT FRAME AND COVER  
S626.07 - RESET EXISTING MONUMENT FRAME AND COVER  
S626.10 - REPLACE EXISTING SURVEY MONUMENT WITH NEW HORIZONTAL CONTROL SURVEY MONUMENT (RCS)

Department of Environmental Services Architecture and Engineering City of Rochester, New York	ASSISTANT MANAGER OF STREET DESIGN LISA Y. REYES INTERIM CITY ENGINEER HOLLY E. BARRETT, P.E.	SEED FILE DATE OCTOBER 29, 2018
---	--	------------------------------------

PROJECT TITLE STREET IMPROVEMENT PROGRAM RESIDENTIAL CURB RAMPS CULVER RD EAST TO CITY LINE
---

ISSUED 12/21/2018	CHECKED L. REYES	DRAWN K. BATZ	DESIGN F. BONNIPE	SCALE	PROJECT NUMBER 19106	NO	REVISION	BY	DATE
----------------------	---------------------	------------------	----------------------	-------	----------------------------	----	----------	----	------


DRAWING TITLE TABLES	DRAWING NO 18	OF 00
-------------------------	------------------	----------





CB58-1	ELM	N. WINTON	REMOVE EXISTING CATCH BASIN. INSTALL NEW PRECAST TYPE B CATCH BASIN. CONNECT TO EXISTING LATERAL PIPE WITH NEW FLEXIBLE RUBBER JOINT CONNECTOR WITH STAINLESS STEEL SHEAR RING AND STAINLESS STEEL SHEAR BANDS AND NEW SDR21 8" PVC PIPE. CLEAN EXISTING LATERAL PIPE.	S601.2608, S604.3701
CB62-1	MAXSON	HALL	REMOVE EXISTING CATCH BASIN. INSTALL NEW PRECAST TYPE B CATCH BASIN. CONNECT TO EXISTING LATERAL PIPE WITH NEW FLEXIBLE RUBBER JOINT CONNECTOR WITH STAINLESS STEEL SHEAR RING AND STAINLESS STEEL SHEAR BANDS AND NEW SDR21 8" PVC PIPE. CLEAN EXISTING LATERAL PIPE.	S601.2608, S604.3701
CB62-2	MAXSON	HALL	REMOVE EXISTING CATCH BASIN. INSTALL NEW PRECAST TYPE B CATCH BASIN. CONNECT TO EXISTING LATERAL PIPE WITH NEW FLEXIBLE RUBBER JOINT CONNECTOR WITH STAINLESS STEEL SHEAR RING AND STAINLESS STEEL SHEAR BANDS AND NEW SDR21 8" PVC PIPE. CLEAN EXISTING LATERAL PIPE.	S601.2608, S604.3701
CB62-3	MAXSON	HALL	REMOVE EXISTING CATCH BASIN. INSTALL NEW PRECAST TYPE B CATCH BASIN. CONNECT TO EXISTING LATERAL PIPE WITH NEW FLEXIBLE RUBBER JOINT CONNECTOR WITH STAINLESS STEEL SHEAR RING AND STAINLESS STEEL SHEAR BANDS AND NEW SDR21 8" PVC PIPE. CLEAN EXISTING LATERAL PIPE.	S601.2608, S604.3701
CB62-4	MAXSON	HALL	REMOVE EXISTING CATCH BASIN. INSTALL NEW PRECAST TYPE B CATCH BASIN. CONNECT TO EXISTING LATERAL PIPE WITH NEW FLEXIBLE RUBBER JOINT CONNECTOR WITH STAINLESS STEEL SHEAR RING AND STAINLESS STEEL SHEAR BANDS AND NEW SDR21 8" PVC PIPE. CLEAN EXISTING LATERAL PIPE.	S601.2608, S604.3701
CB63-1	E. MAIN	PACKARD	ADJUST EXISTING CATCH BASIN FRAME AND GRATE. CLEAN EXISTING CATCH BASIN AND LATERAL PIPE.	S604.5004, S604.53
CB63-2	PACKARD	E. MAIN	ADJUST EXISTING CATCH BASIN FRAME AND GRATE. CLEAN EXISTING CATCH BASIN AND LATERAL PIPE.	S604.5004, S604.53
CB69-1	E. MAIN	INDIANA	ADJUST EXISTING CATCH BASIN FRAME AND GRATE. CLEAN EXISTING CATCH BASIN AND LATERAL PIPE.	S604.5004, S604.53
CB69-2	INDIANA	E. MAIN	ADJUST EXISTING CATCH BASIN FRAME AND GRATE. CLEAN EXISTING CATCH BASIN AND LATERAL PIPE.	S604.5004, S604.53
CB70-1	E. MAIN	DURHAM	ADJUST EXISTING CATCH BASIN FRAME AND GRATE. CLEAN EXISTING CATCH BASIN AND LATERAL PIPE.	S604.5004, S604.53
CB74-1	JERSEY	E. MAIN	ADJUST EXISTING CATCH BASIN FRAME AND GRATE. CLEAN EXISTING CATCH BASIN AND LATERAL PIPE.	S604.5004, S604.53
CB77-1	KANSAS	E. MAIN	ADJUST EXISTING CATCH BASIN FRAME AND GRATE. CLEAN EXISTING CATCH BASIN AND LATERAL PIPE.	S604.5004, S604.53
CB78-1	E. MAIN	AKRON	ADJUST EXISTING CATCH BASIN FRAME AND GRATE. CLEAN EXISTING CATCH BASIN AND LATERAL PIPE.	S604.5004, S604.53
CB78-2	AKRON	E. MAIN	ADJUST EXISTING CATCH BASIN FRAME AND GRATE. CLEAN EXISTING CATCH BASIN AND LATERAL PIPE.	S604.5004, S604.53
CB79-1	E. MAIN	LUELLA	ADJUST EXISTING CATCH BASIN FRAME AND GRATE. CLEAN EXISTING CATCH BASIN AND LATERAL PIPE.	S604.5004, S604.53

ITEM NUBERS:  
S601.2608 - 8" POLYVINYL CHLORIDE LATERAL PIPE, SDR-21-INSTALLED (INCLUDING LATERAL CONNECTION)  
(INCLUDING EXCAVATION, BACKFILL & PAVEMENT BASE RESTORATION)  
S604.3701 - TYPE B CATCH BASIN - INSTALLED (INCLUDING EXCAVATION, BACKFILL & PAVEMENT BASE RESTORATION)  
S604.5004 - ADJUST EXISTING CATCH BASIN FRAME AND GRATE (INCLUDING EXCAVATION, BACKFILL & PAVEMENT BASE RESTORATION)  
S604.53 - CLEAN EXISTING CATCH BASIN AND LATERAL PIPE

<div>Department of Environmental Services Architecture and Engineering Services City of Rochester, New York</div> <div></div>		<div>ASSISTANT MANAGER OF STREET DESIGN INTERIM CITY ENGINEER</div> <div>LISA Y. REYES HOLLY E. BARRETT, P.E.</div>		OCTOBER 29, 2018 SEED FILE DATE	
PROJECT TITLE STREET IMPROVEMENT PROGRAM RESIDENTIAL CURB RAMPS CULVER RD EAST TO CITY LINE					
ISSUED	12/21/2018				
CHECKED	L. REYES				
DRAWN	K. BATZ				
DESIGN	F. BONN-PE				
SCALE					
PROJECT NUMBER	19106	NO	REVISION	BY	DATE
DRAWING TITLE TABLES		DRAWING NO. 20 OF 00			