



City of Rochester, NY  
Lovely A. Warren, Mayor  
Rochester City Council

## Mount Hope Avenue Phase 2

**PIN 4760.76**  
**CITY PC 10104**

March 18, 2019  
Final Public Information Meeting - Design  
Saint Anne Church  
1600 Mount Hope Avenue  
Rochester, NY



City of Rochester  
Department of Environmental Services  
Bureau of Architecture and Engineering  
Street Design Division

**Presentation at 6:00 p.m.**

## PROJECT TEAM

**Mayor**  
**DES Commissioner**  
**City Engineer**

**Lovely A. Warren**  
**Norman H. Jones**  
**Holly Barrett, P.E.**

Assistant Street Design Manager  
Street Design Project Manager

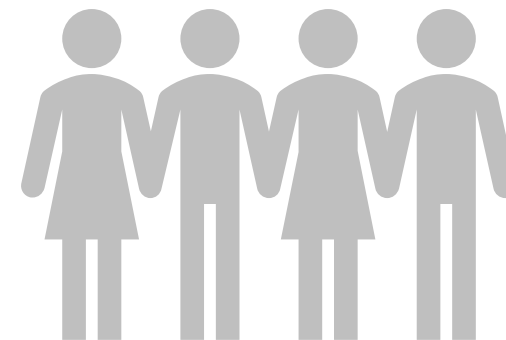
Lisa Reyes  
Richard Koss

NYSDOT Local Project Liaison  
MCDOT Project Liaison

Frank DiCostanzo, P.E.  
Thomas Polech, P.E.

Bergmann Project Manager  
Bergmann Project Engineer  
Highland Planning

Michael Croce, P.E.  
Dominic Fekete, P.E.  
Susan Hopkins



# INTRODUCTION

- Mt. Hope Avenue from city-line to Rossiter Road (0.59 centerline mile) is classified as a principal arterial street on the national highway system.
- The City advocated for and received over \$5.1 million of obligated Federal funds through the Genesee Transportation Council (GTC).
- The City is providing nearly \$1.3 million in support funds toward additional improvements.
- Rochester Gas and Electric along with other local utilities will also contribute over \$2 million for improvements.
- The Federal funds for this project have a timeline that requires design and construction to meet a strict schedule or funds will be forfeited.
- Requests may or may not be accommodated depending on overall budget and scope as originally presented in the application for funds for this project as well as various City and Federal regulations that must be followed.

# TONIGHT'S PRESENTATION

- Background
- Community Engagement
- Final Improvement Plan
- Anticipated Schedule
- Open House



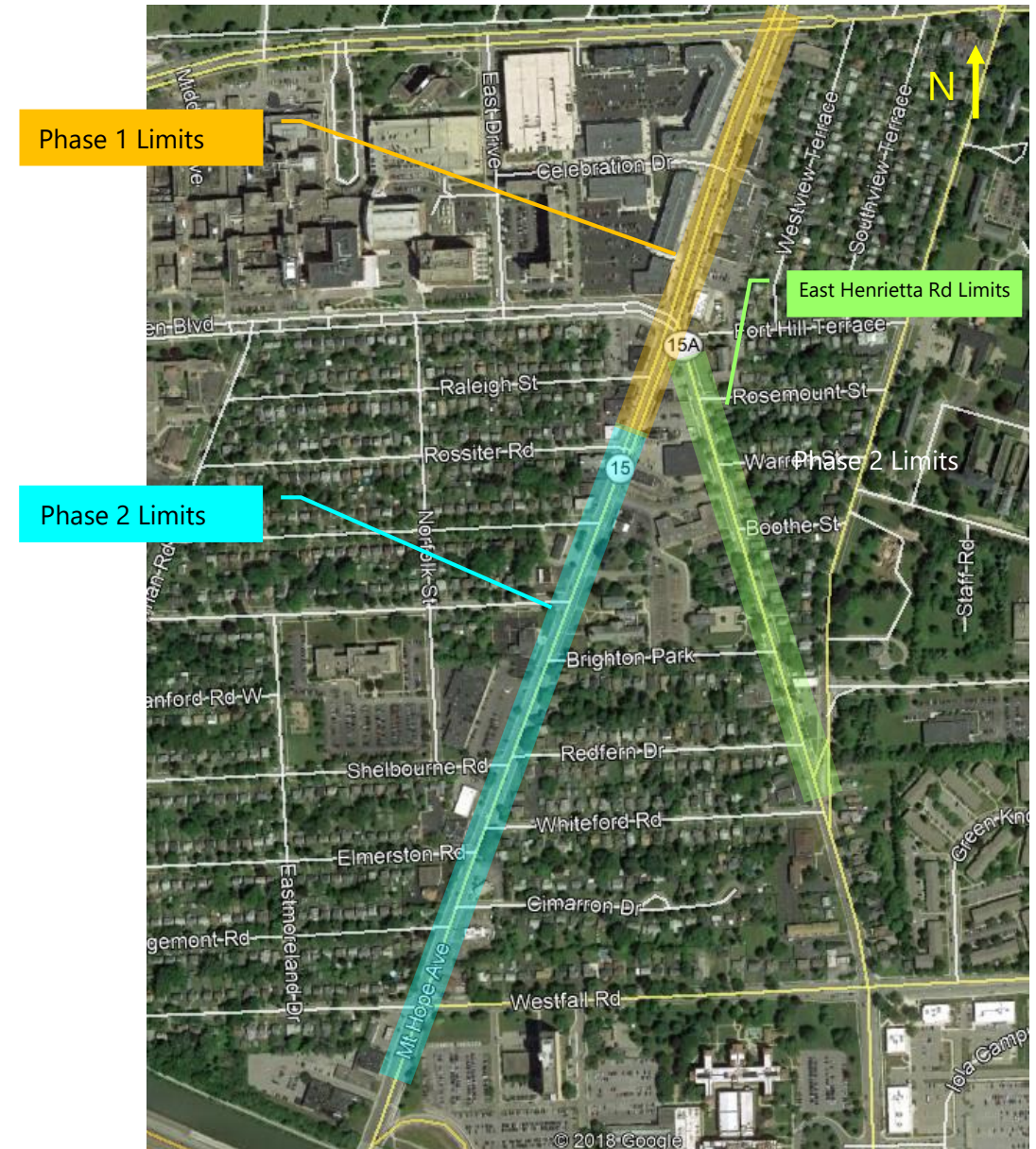
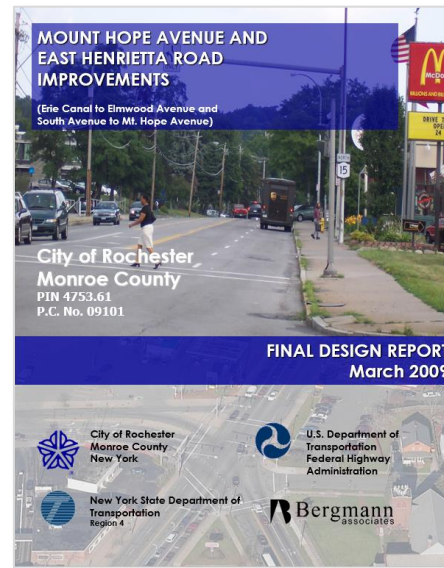
---

background



# HOW WE GOT HERE

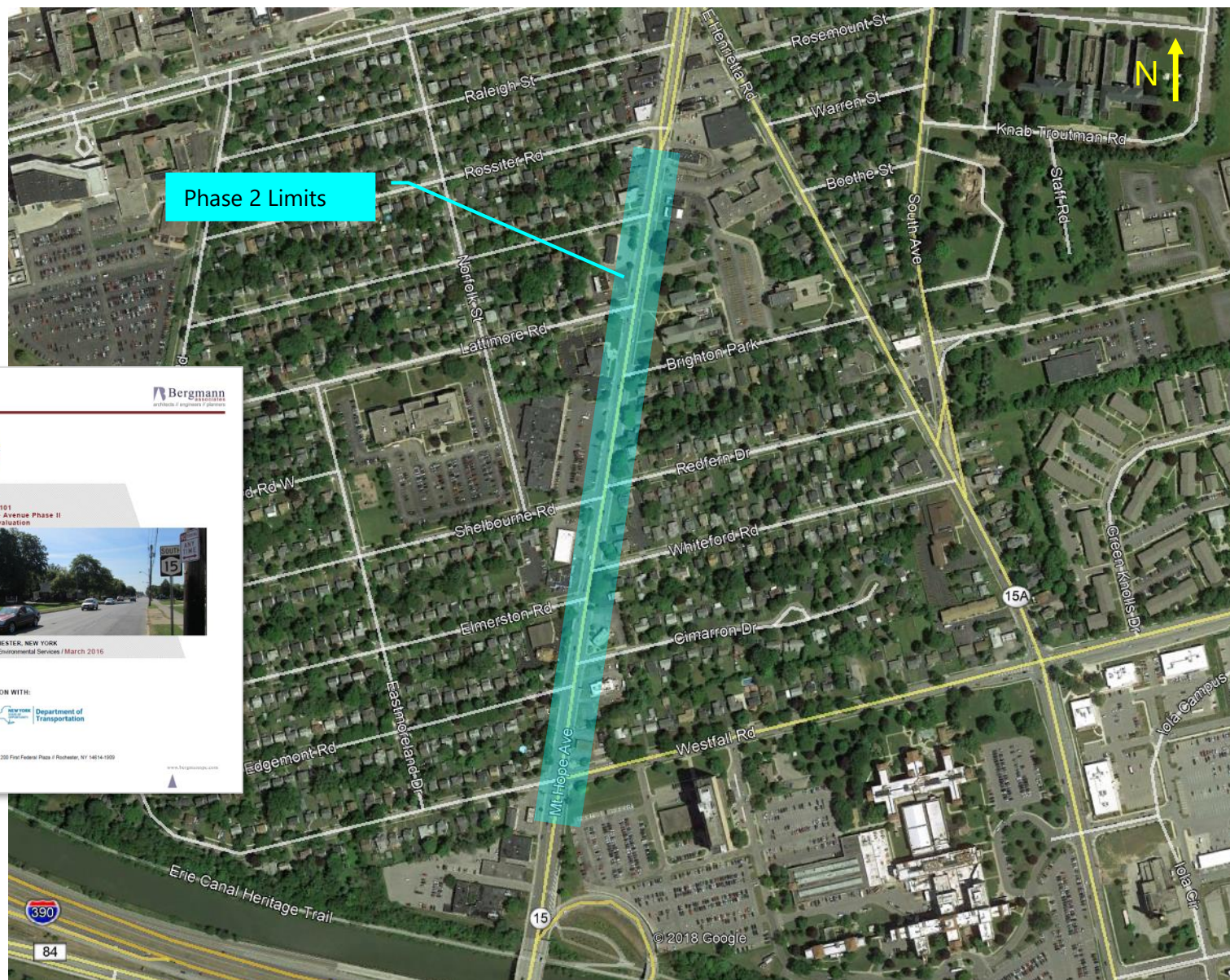
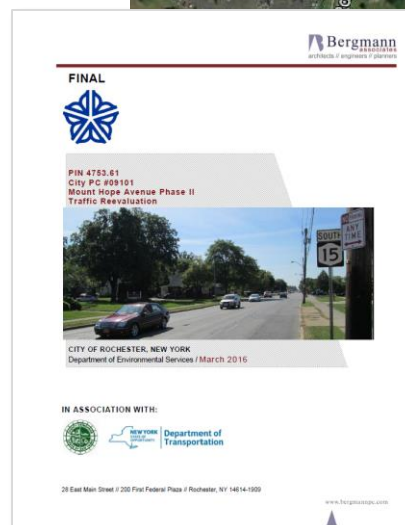
- Road work planned in 2009
- East Henrietta Road constructed in 2009
- City applied for funding for Phases 1 and 2 of Mount Hope Avenue in 2011.
- Funding to reconstruct Phase 2 section was denied.
- Phase 1 complete in 2014 (Rossiter Rd to Elmwood Dr)





# HOW WE GOT HERE

- New funding application submitted in 2013 based on poor pavement and drainage conditions
- 2016 Re-evaluation study
- Final design began in 2017
- Extensive community engagement through 2019





## PROJECT PURPOSE

- Improve pavement condition
- Improve drainage
- Improve safety
- Improve pedestrian accommodations
- Enhance the streetscape





---

community engagement

# COMMUNITY ENGAGEMENT

## MT. HOPE AVE PHASE TWO IMPROVEMENTS



The City of Rochester has initiated a detailed design process for the second phase of the Mt. Hope Avenue Improvement project. This phase of the project will focus on Mt. Hope Avenue between Rositter Road and the City of Rochester's southern boundary.

The project is being led by the City of Rochester in partnership with NYSDOT and Monroe County, with assistance from Bergmann Associates and Highland Planning.

As part of the design process, the City will be seeking feedback from business owners, property owners, neighbors, pedestrians, cyclists, and other community members who have a stake in the project.



## Door-to-Door Outreach

- August 2017
- Every business contacted

## Focus Group Meetings

- September 2017
- Business session
- Resident session

## Design Workshop

- September 2017
- Presentation, charette, and reporting

## Property Owner Outreach

- April 2018
- 40 property owners contacted

## Mount Hope Task Force Meetings

- 2017 to present
- 18 monthly meetings to date



# WHAT WE HEARD

## COMMUNITY ENGAGEMENT

"Pedestrian Safety is a key concern."

"Mount Hope Avenue is a barrier to pedestrian crossings."

"Create a welcoming atmosphere."

"Be sure to incorporate low maintenance streetscape and gateway features."

"Don't clutter up the streetscape with too many poles."

"More traffic calming is needed."

"We want to understand the construction timeline and potential impacts to our homes and businesses."



---

final design





City of Rochester, NY  
Lovely A. Warren, Mayor  
Rochester City Council

# FINAL DESIGN



\$5.3  
million

Anticipated Investment in Roadway and Streetscape Improvements  
Federal, State, Monroe County, and City funds

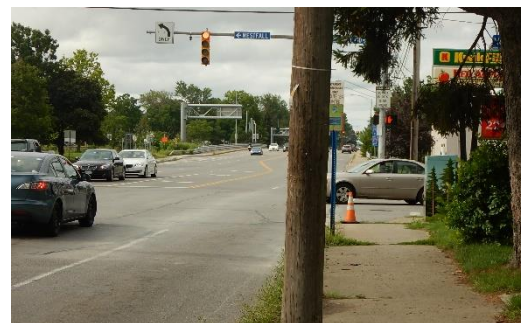
Mount Hope Avenue



## FINDINGS & RESULTS: MOTOR VEHICLE TRAFFIC

- 85% of all vehicles travel at 37 mph or less
- I-390 interchange improvements reduced volumes on Mount Hope by 10% to 13%
- Mount Hope Avenue still carries 18,500 to 21,000 vehicles per day (average daily traffic: ADT)
- 6% trucks and buses

*Traffic analysis verified the need for two travel lanes in each direction*

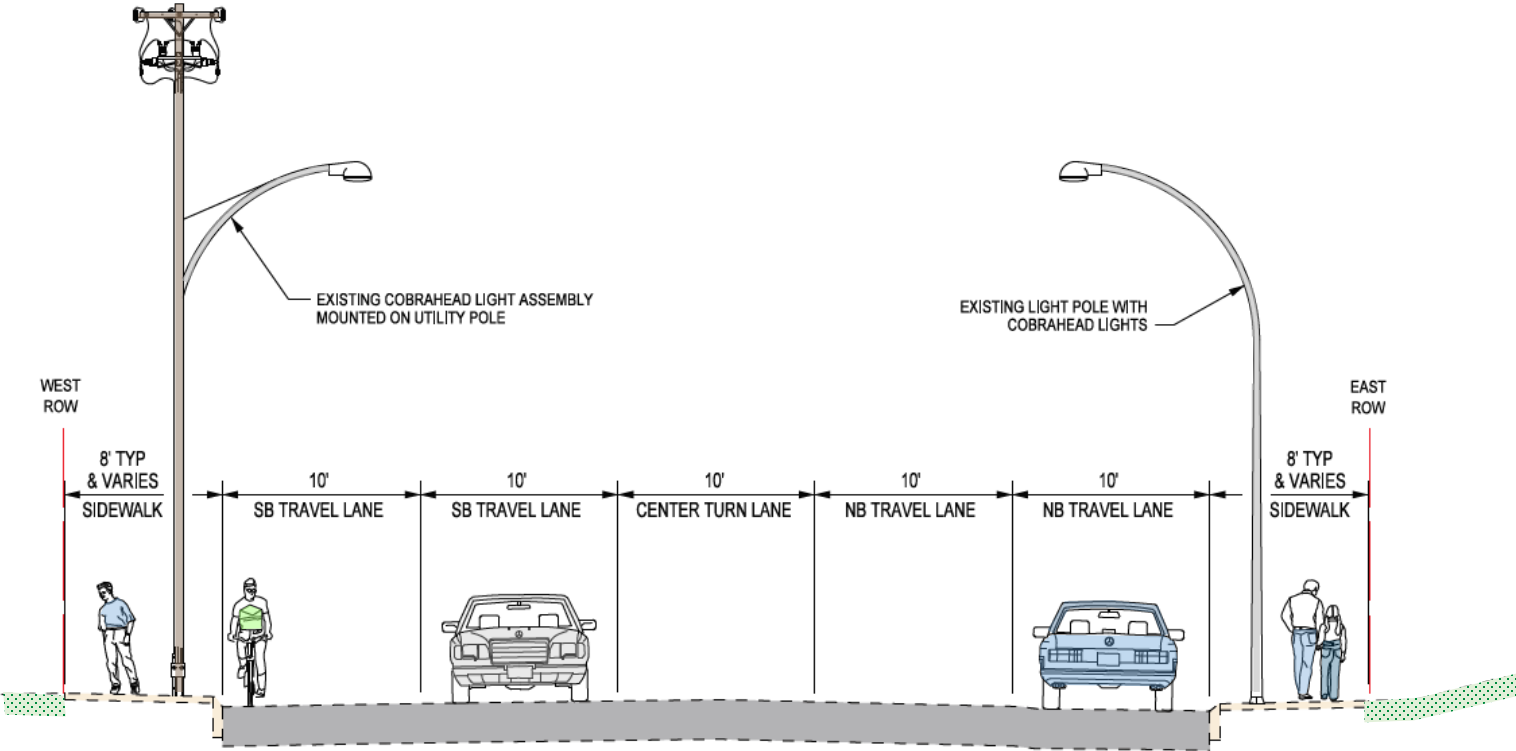






City of Rochester, NY  
Lovely A. Warren, Mayor  
Rochester City Council

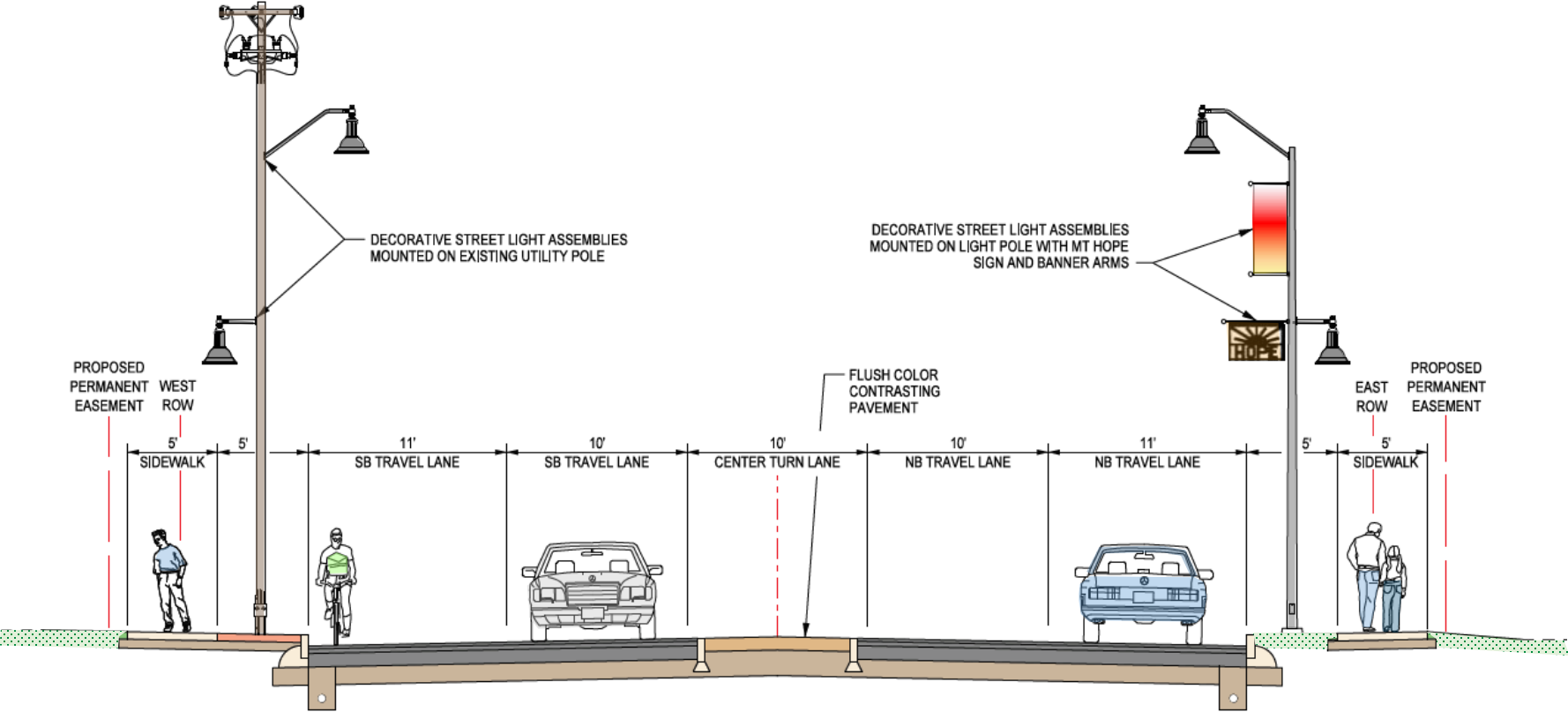
# EXISTING SECTION





City of Rochester, NY  
Lovely A. Warren, Mayor  
Rochester City Council

# PROPOSED SECTION







City of Rochester, NY  
Lovely A. Warren, Mayor  
Rochester City Council

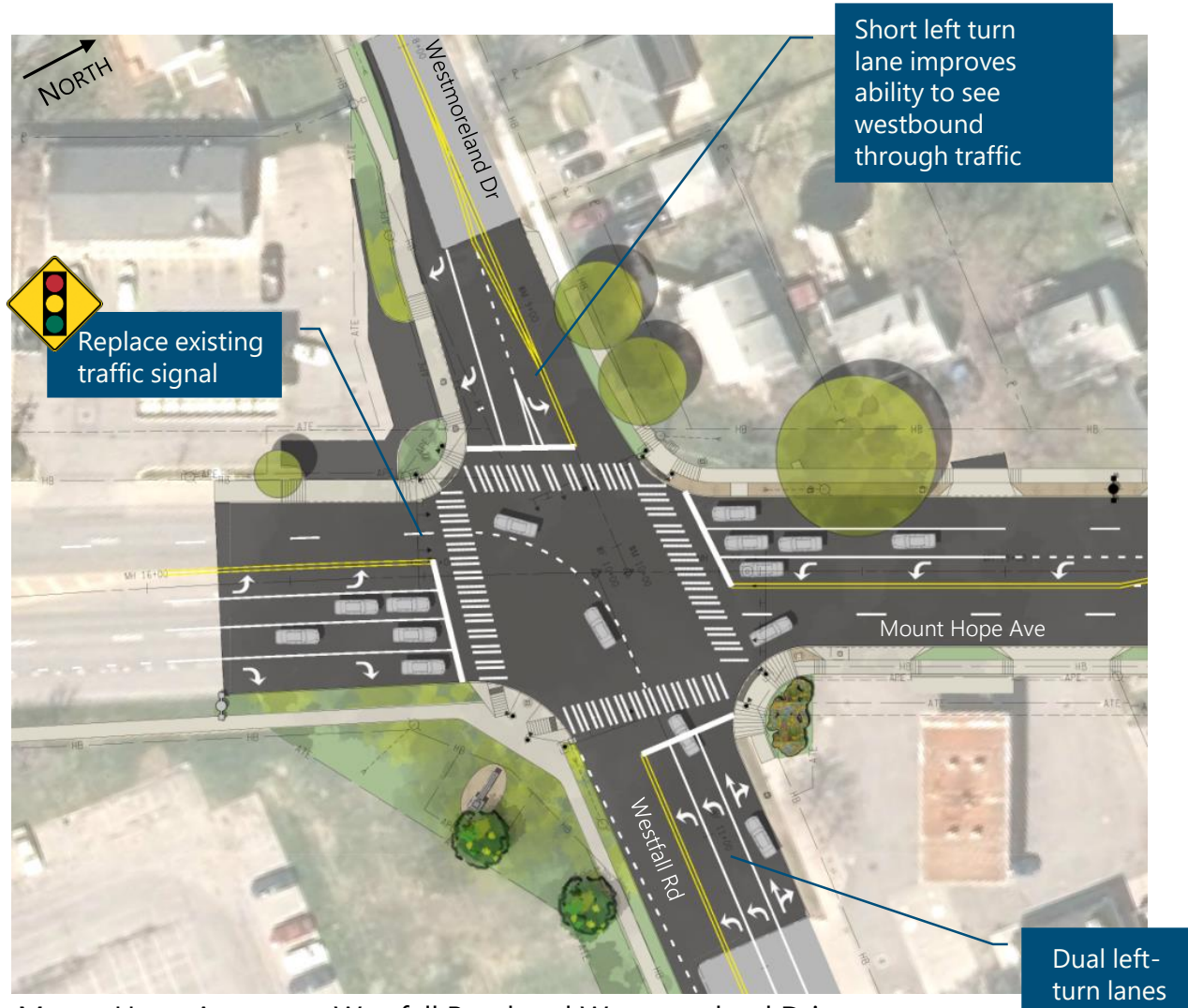
# ROADWAY



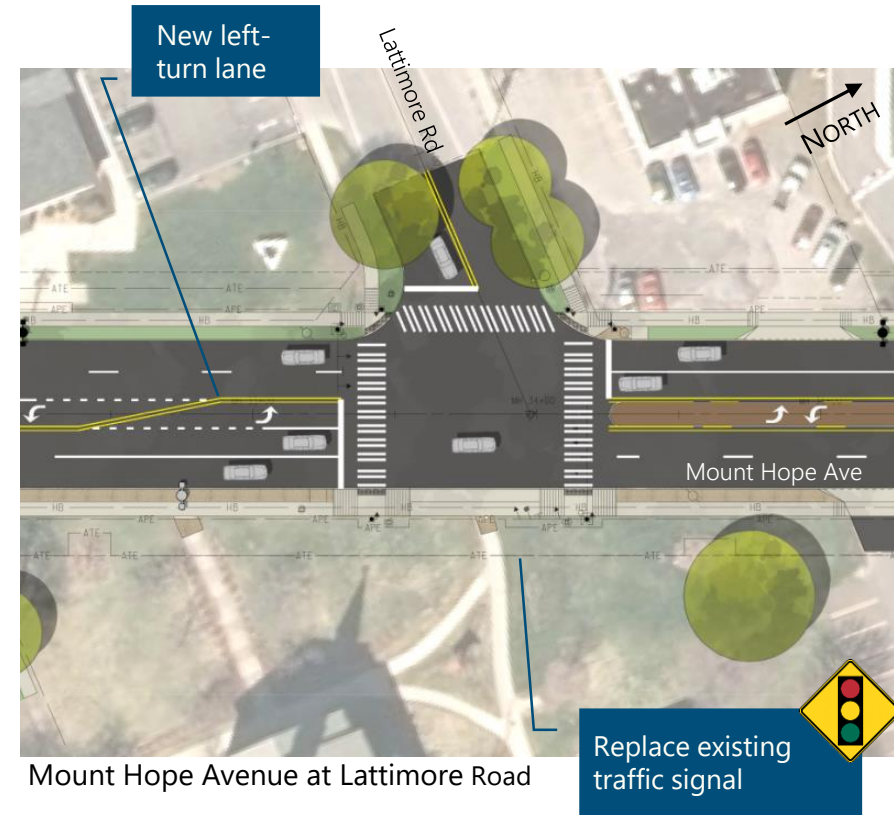
Mount Hope Avenue



# INTERSECTIONS



Mount Hope Avenue at Westfall Road and Westmoreland Drive



Mount Hope Avenue at Lattimore Road

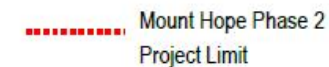
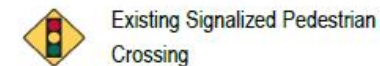


# FINDINGS & RESULTS: PEDESTRIANS

- Study conducted to count the number of pedestrians crossing Mount Hope Avenue
- Counts made with schools and colleges in session
- Insufficient gaps to safely cross both directions of Mount Hope Avenue at one time

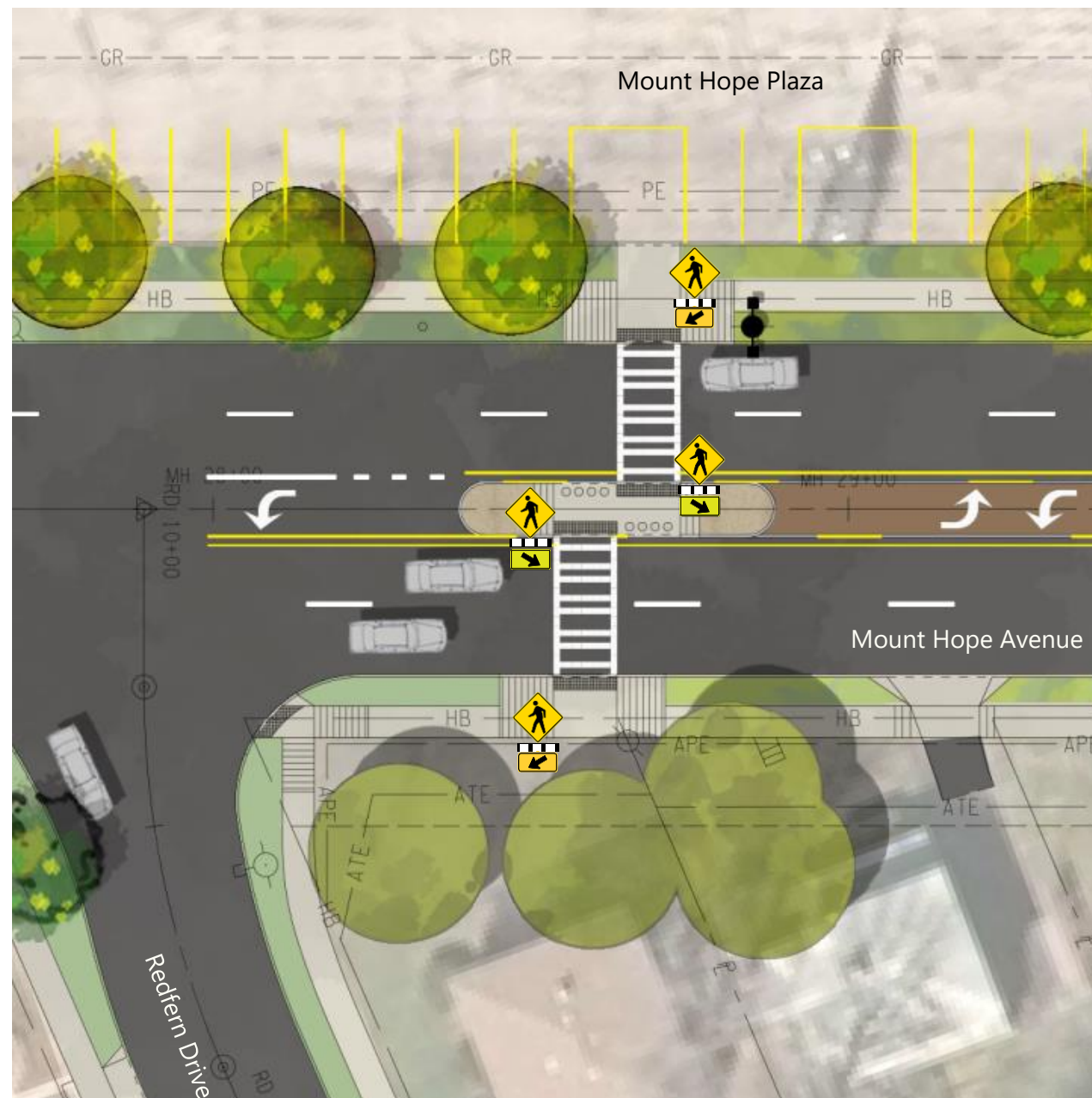
*Mount Hope Avenue currently acts as a barrier to pedestrian crossings; therefore, the City will install a new mid-block crossing.*

Date: Friday, September 14, 2018  
 Time: 3:00 PM through 7:00 PM (4 Hours)  
 Weather: Sunny with passing clouds, dry  
 Sunset: 7:22 PM  
 Scale: None



## MID-BLOCK CROSSING

- Push button activated flashing beacons
- High-visibility marked crosswalks
- Refuge island
- Accessible ramps







City of Rochester, NY  
Lovely A. Warren, Mayor  
Rochester City Council

# PEDESTRIAN CROSSING SAFETY



Mount Hope Avenue





City of Rochester, NY  
Lovely A. Warren, Mayor  
Rochester City Council

# STREETSCAPE ELEMENTS



Bicycle rack

New and replacement street trees



Bicycle rack

New Gateway Feature



New lighting system (stand-alone poles on east side)



Hardscape or turf snow storage areas



Mount Hope Avenue



# GATEWAY FEATURE



- Reinterpret the former gateway sign
- Reduced maintenance
- Consistent with look and feel of Phase 1

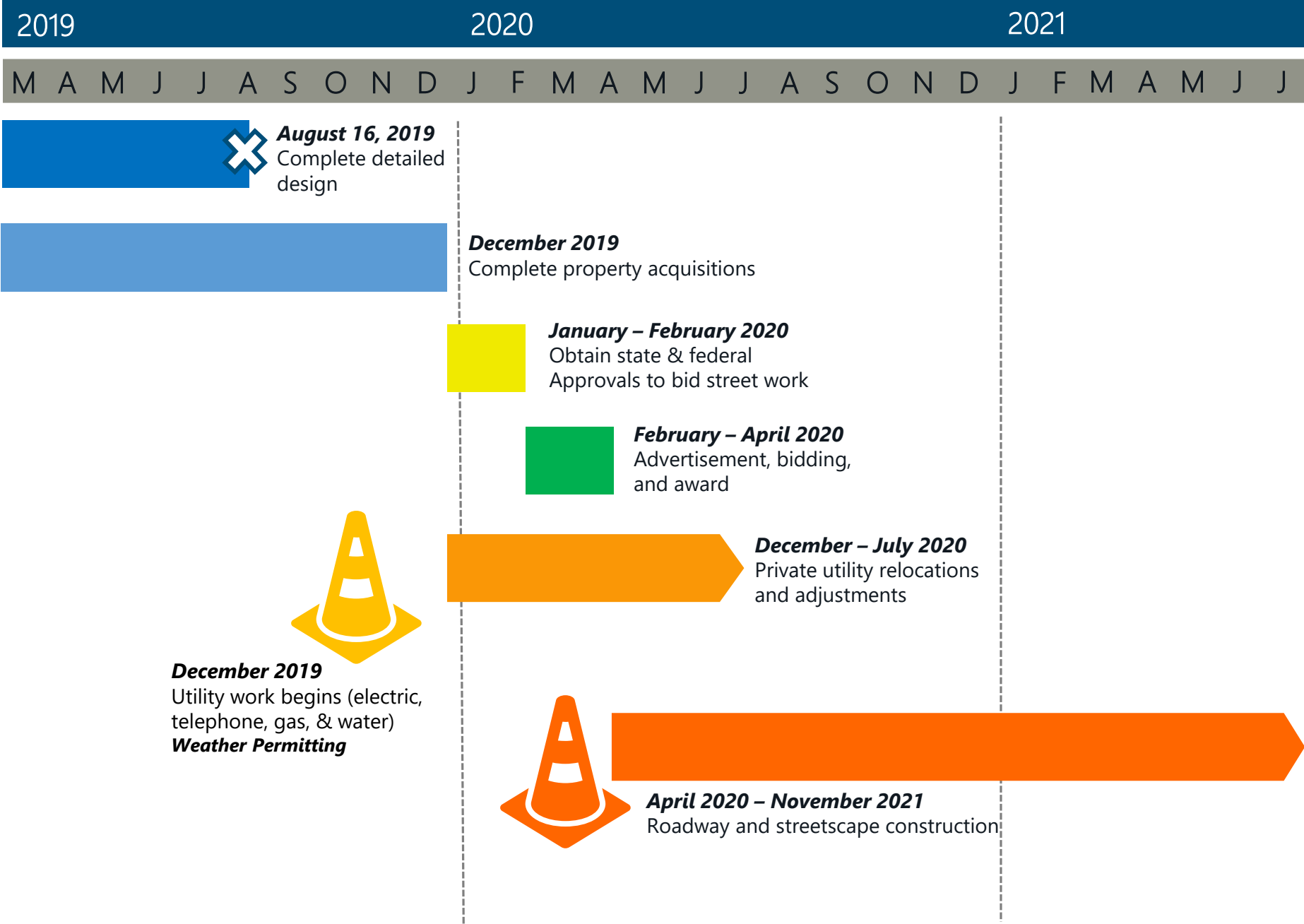


---

what's next?



# Anticipated Schedule



---

open house



# OPEN HOUSE FORMAT

6

STATIONS

You can visit to ask questions and offer comments up until 7:30 PM this evening.



					
ZONING & VARIANCE	PROPERTY ACQUISITIONS	UTILITY RELOCATION	COMMUNITY ENGAGEMENT	DESIGN	WORK ZONE & STAGING
	 				

# THANK-YOU FOR YOUR PARTICIPATION!



Talk with the project team until  
**7:30 p.m.** this evening.

Take a comment sheet, fill it out,  
drop it off, mail it, email it, etc.  
**BEFORE APRIL 1, 2019**

Visit: <https://www.cityofrochester.gov/MtHope2/>

## Mount Hope Avenue Phase 2

PIN 4760.76  
CITY PC 10104

FOR MORE INFORMATION OR TO PROVIDE A  
COMMENT PLEASE CONTACT

Mr. Richard Koss  
Project Manager  
City of Rochester Department of Environmental Services  
30 Church Street, Room 300B  
Rochester, NY 14614  
(585) 428-6862  
Rich.Koss@CityofRochester.gov