

STRONG NEIGHBORHOOD OF PLAY PRC MEETING BUILDING E – KONAR PROPERTIES

6 SEPTEMBER 2018

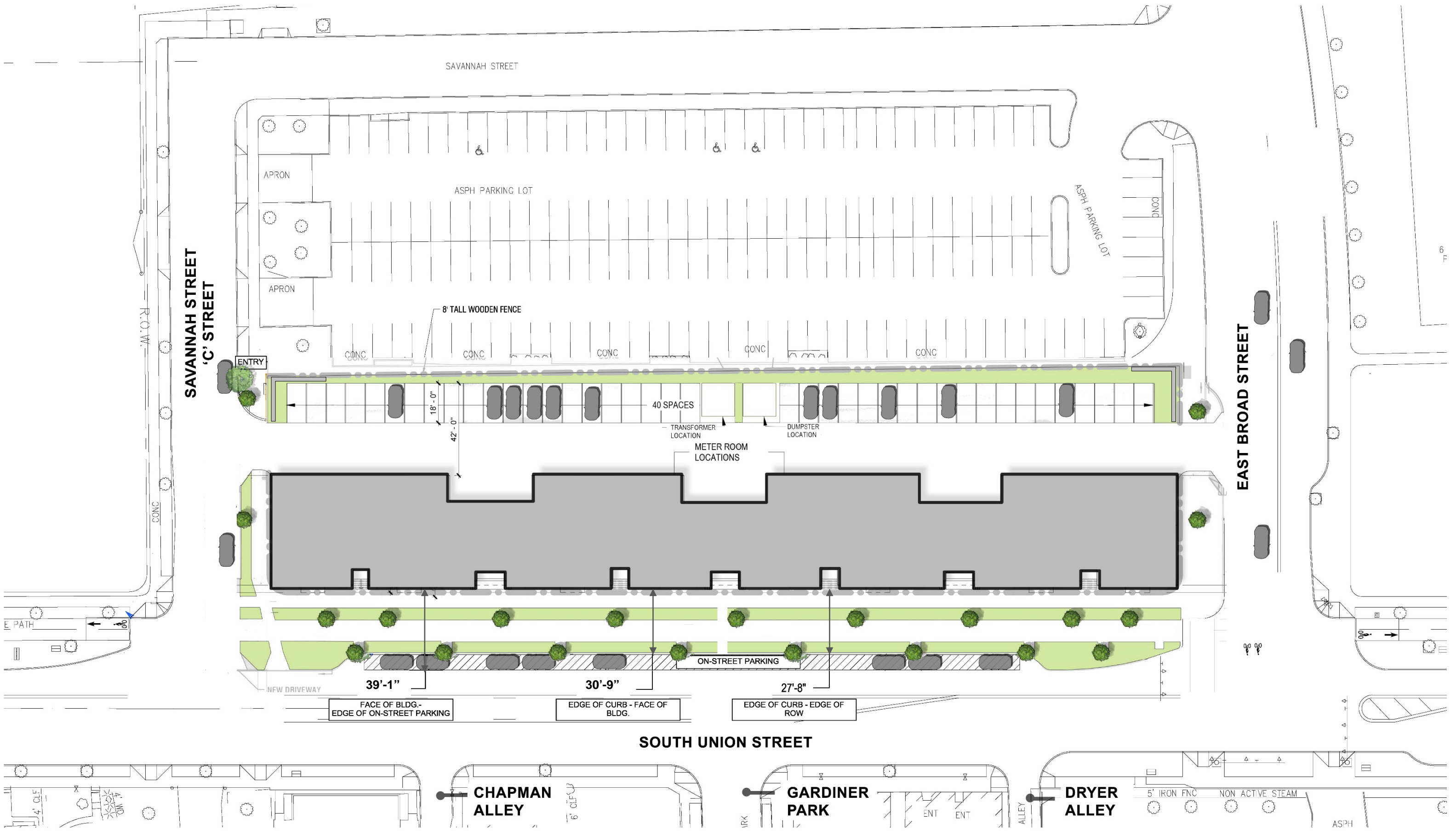
SUBMITTED BY:



ARCHITECTS

54 SOUTH UNION STREET
ROCHESTER, NY 14607
585-244-3780

755 SENECA STREET
BUFFALO, NY 14210
716-856-6448





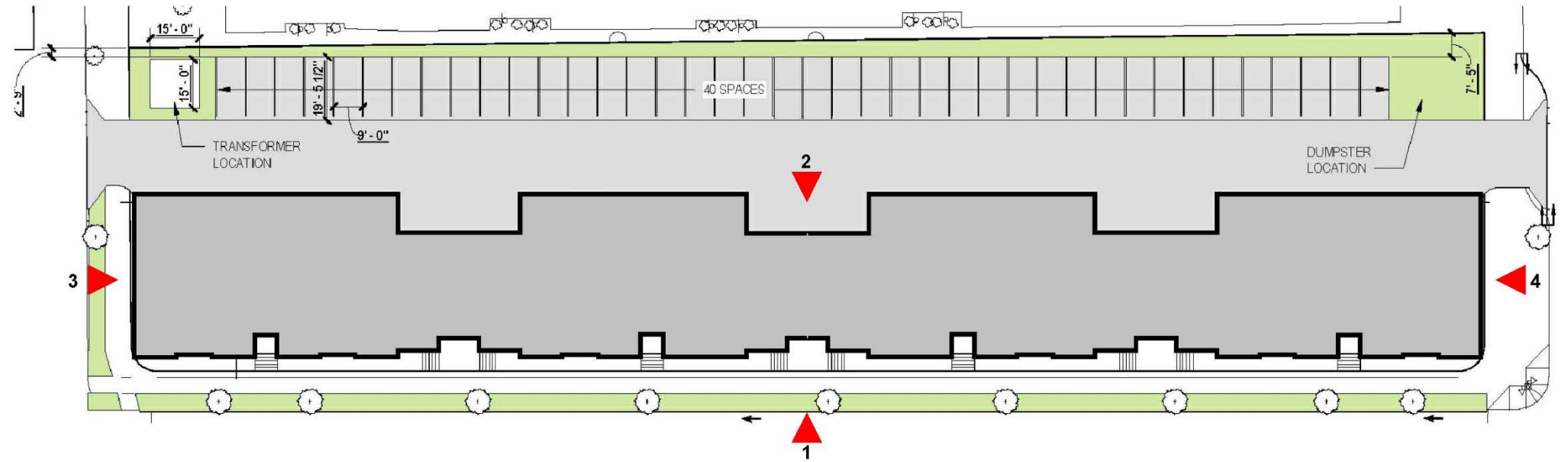
AERIAL VIEW FROM EAST



3 SOUTH ELEVATION



4 NORTH ELEVATION

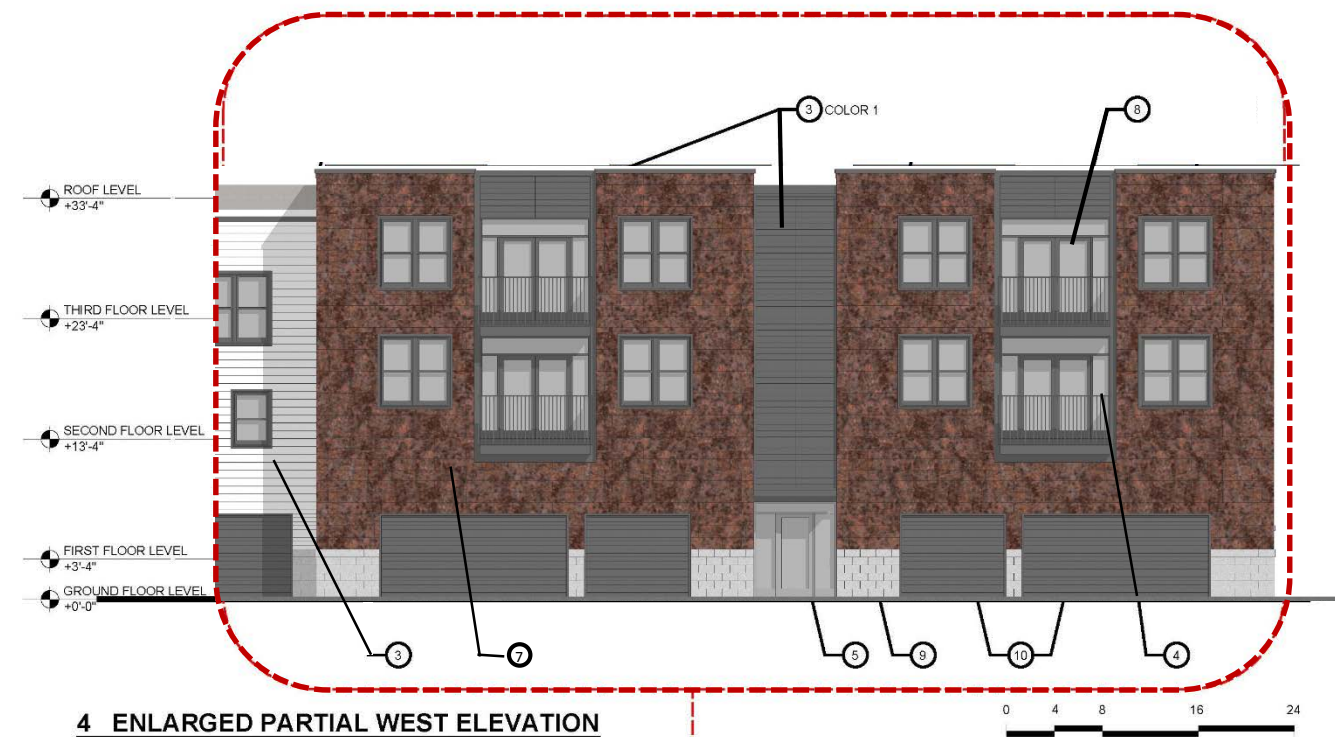
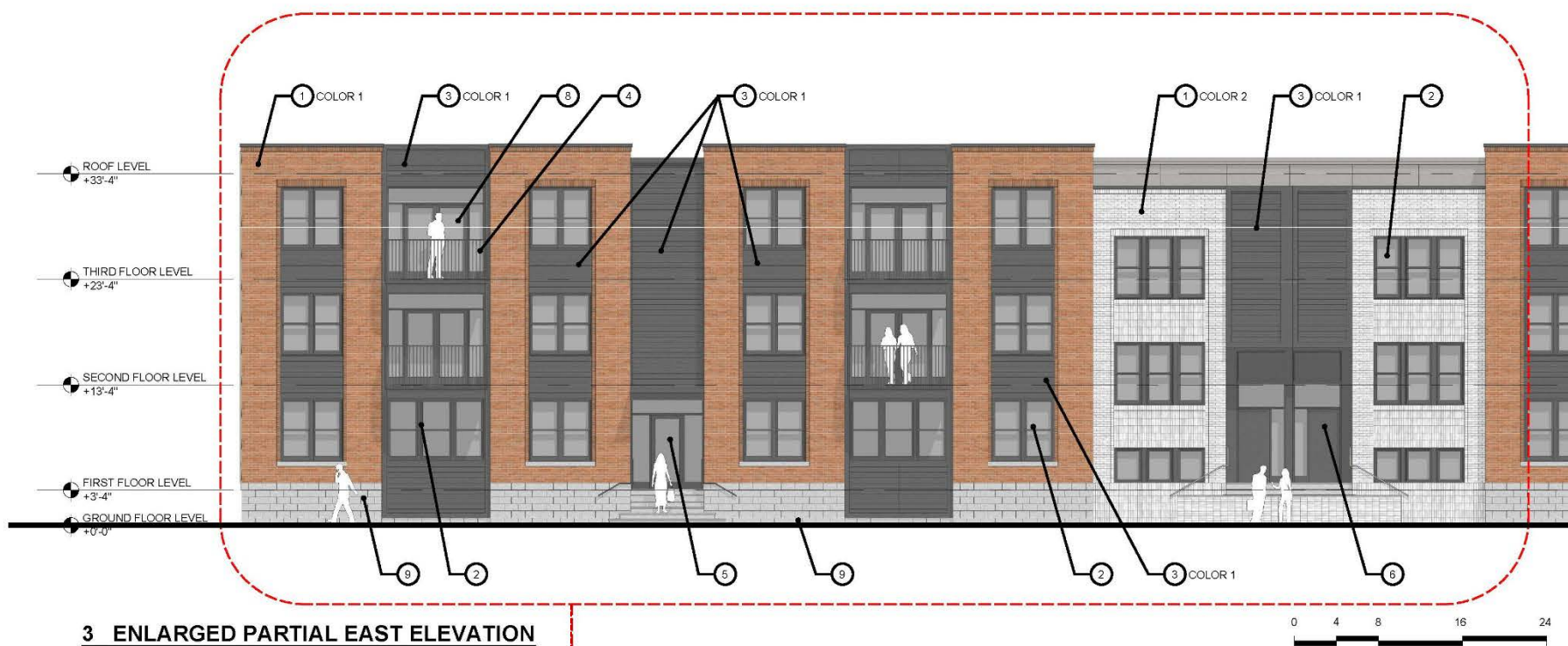


2 WEST ELEVATION



1 SOUTH UNION STREET (EAST) ELEVATION





- MATERIAL KEY:**
- ① BRICK VENEER CLADDING
 - ② FENESTRATION - ARCHITECTURAL DOUBLE HUNG WINDOWS
 - ③ FIBER CEMENT LAP SIDING CLADDING
 - ④ METAL RAILING (PAINTED)
 - ⑤ GLASS PANEL DOOR AND SIDE-LITE ENTRANCE
 - ⑥ SOLID PANEL DOOR AND SIDE-LITE ENTRANCE
 - ⑦ METAL SIDING (12" x 60")
 - ⑧ GLASS PANEL BALCONY DOOR
 - ⑨ GROUND FACE CMU WITH CLEAR SATIN ACRYLIC FINISH
 - ⑩ GARAGE DOOR



ENLARGED PARTIAL EAST ELEVATION



JUNIATA VALLEY BANK
 ATAS, VERSA-LOK – COPPER BROWN PANEL



ENLARGED PARTIAL SOUTH ELEVATION



PERSPECTIVE VIEW FROM SE