

A colorful kite with green, blue, orange, and purple sections and a long orange tail.

Neighborhood of **PLAY**

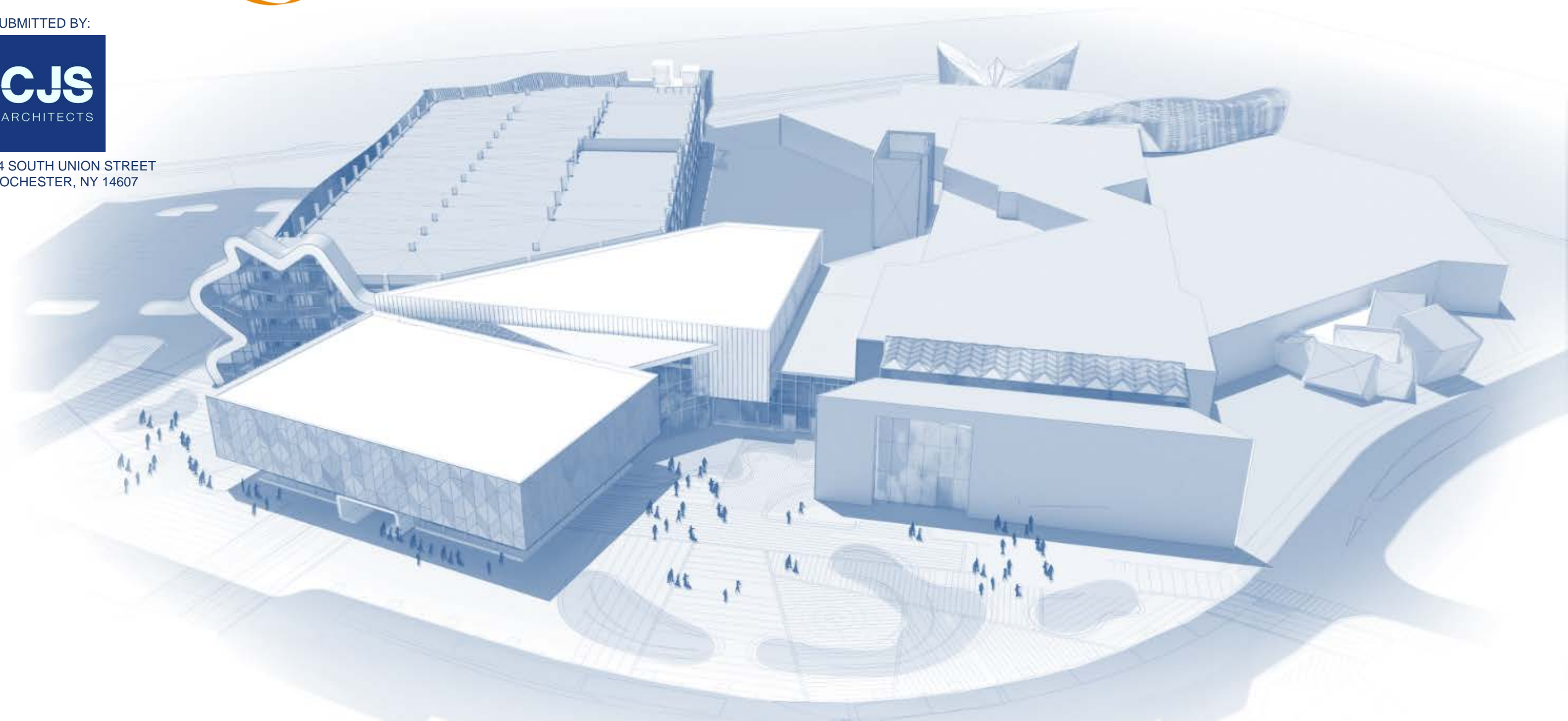
THE STRONG MUSEUM OF PLAY

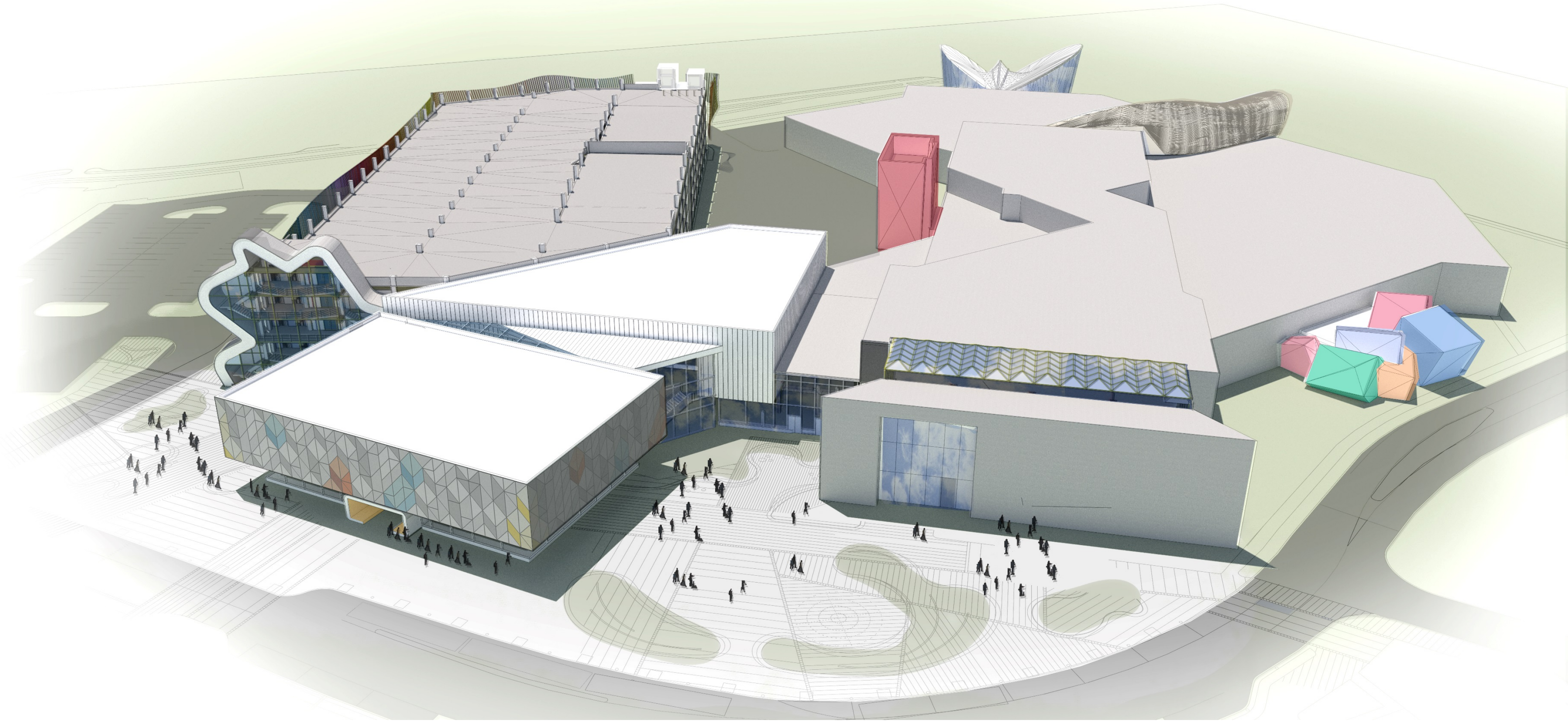
ROCHESTER, NEW YORK

SUBMITTED BY:



54 SOUTH UNION STREET
ROCHESTER, NY 14607





AERIAL VIEW

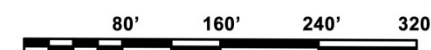


PUBLIC REALM

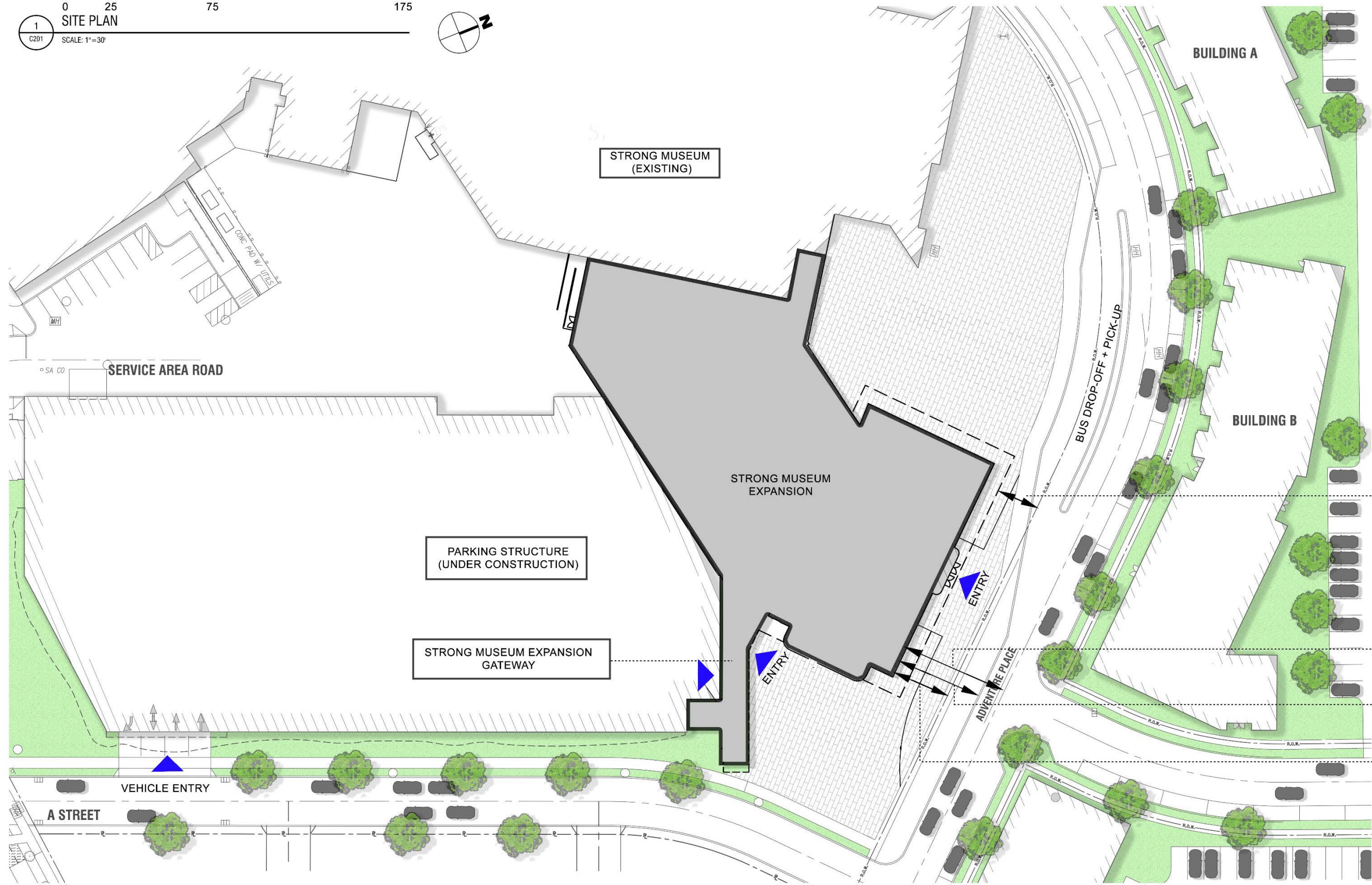
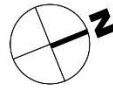
- 1 EXISTING STRONG MUSEUM
- 2 MUSEUM EXPANSION
- 3 PARKING GARAGE
- 4 DISCOVERY GARDEN

- 5 HOTEL & POOL

- 6 BUILDING A - HOUSING
- 7 BUILDING B - HOUSING
- 8 BUILDING B - RETAIL + HOUSING
- 9 BUILDING C - RETAIL
- 10 BUILDING D - RETAIL + HOUSING
- 11 BUILDING D - HOUSING
- 12 BUILDING E - HOUSING



NEIGHBORHOOD SITE PLAN



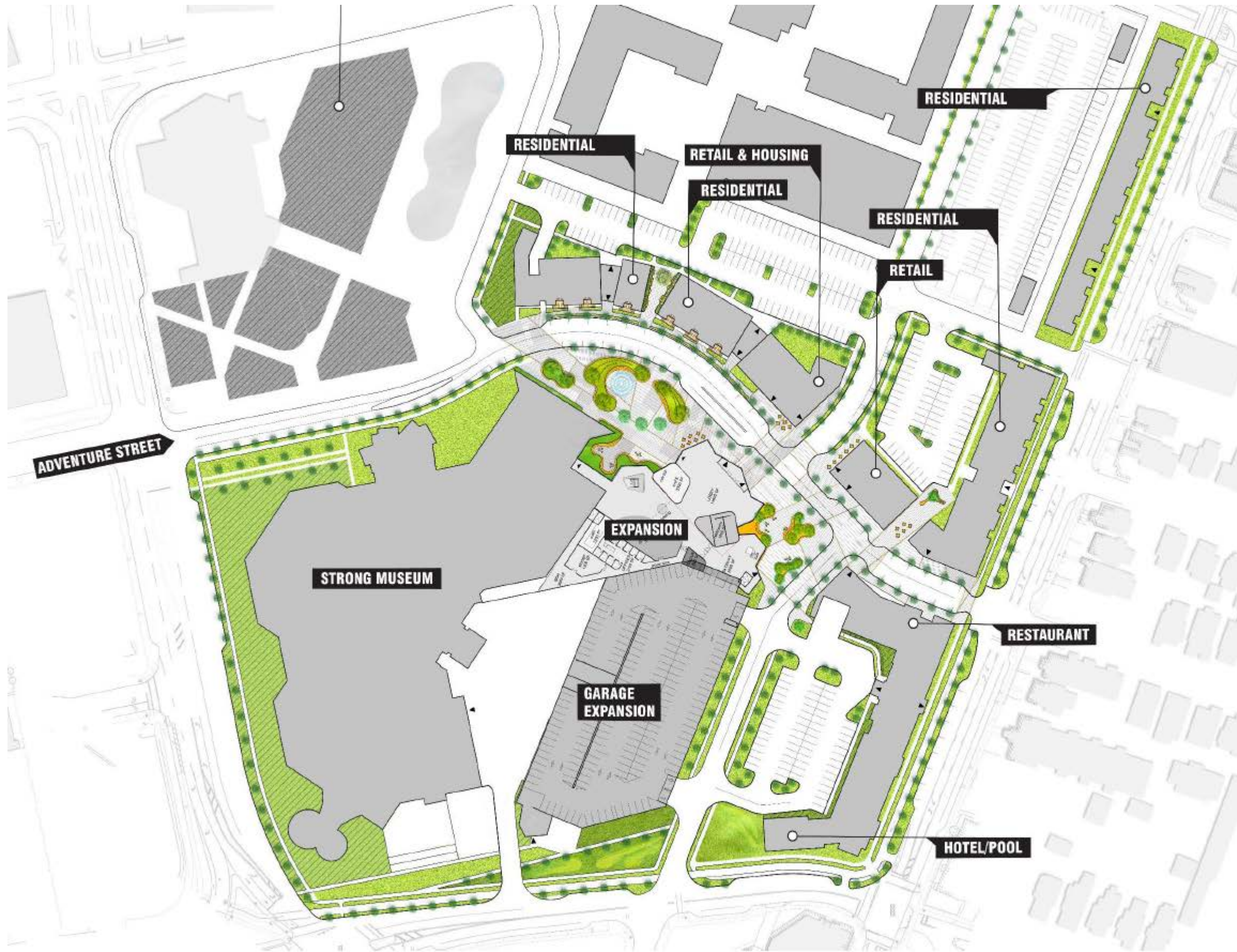
23'-2"
 FACE OF BUILDING -
 R.O.W.

58'-6"
 FACE OF BUILDING -
 CENTERLINE

46'-8"
 FACE OF BUILDING -
 EDGE OF CURB

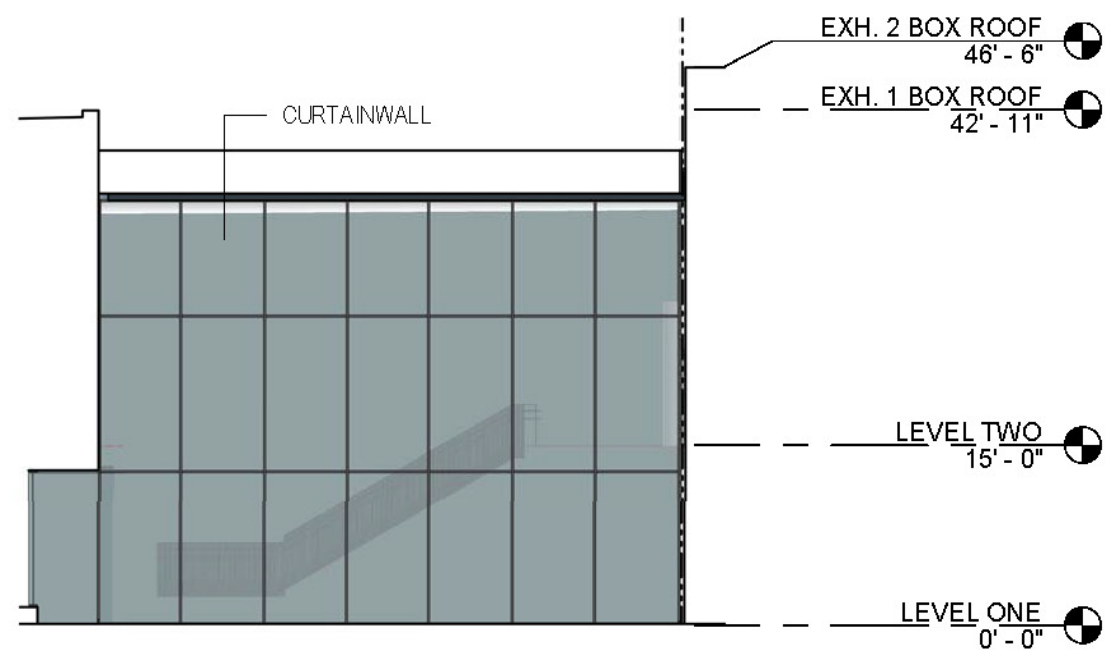
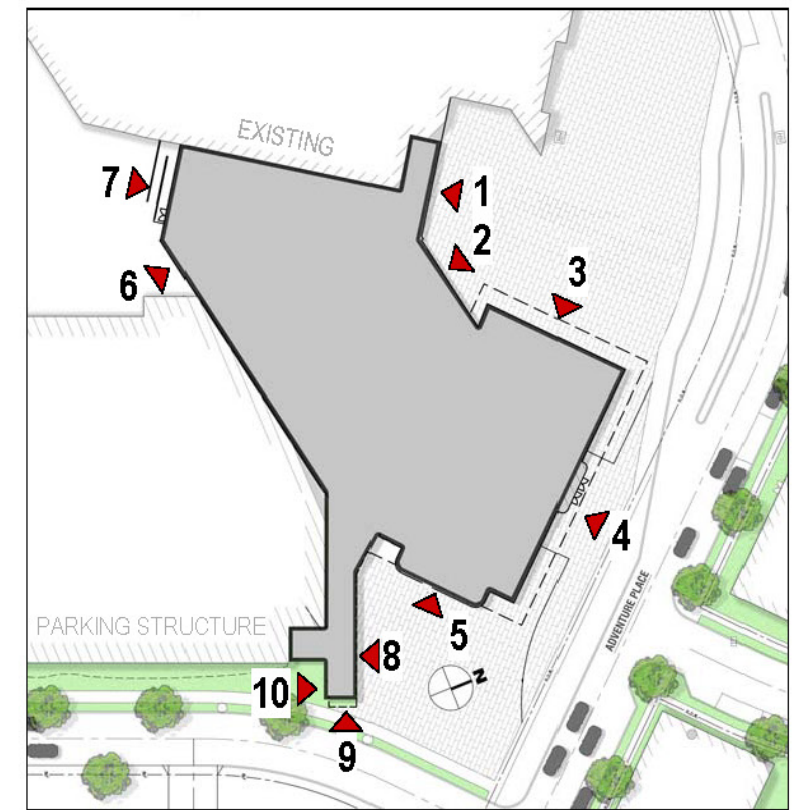
31'-6"
 FACE OF BUILDING -
 R.O.W.

SITE PLAN - ENLARGED

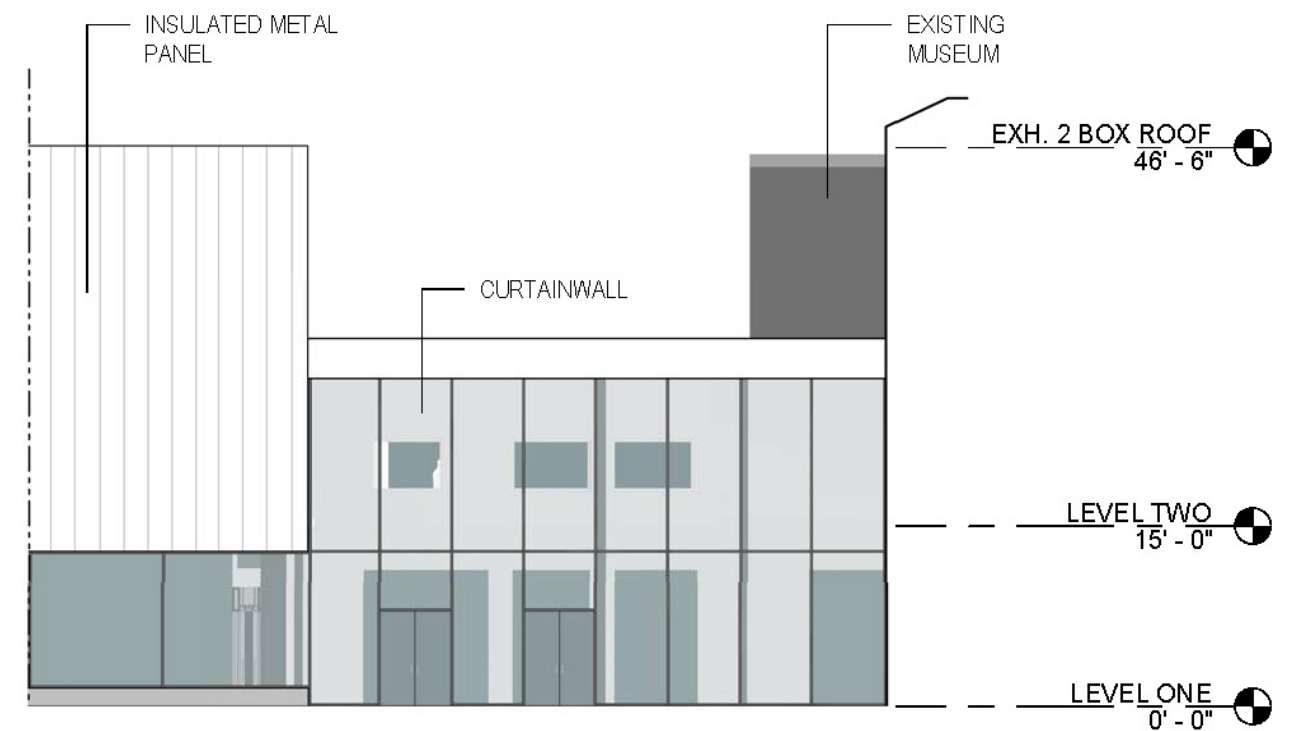


LANDSCAPE ELEMENTS





② DOUBLE HEIGHT GLAZING ELEVATION
1/16" = 1'-0"



① CONNECTION ELEVATION
1/16" = 1'-0"

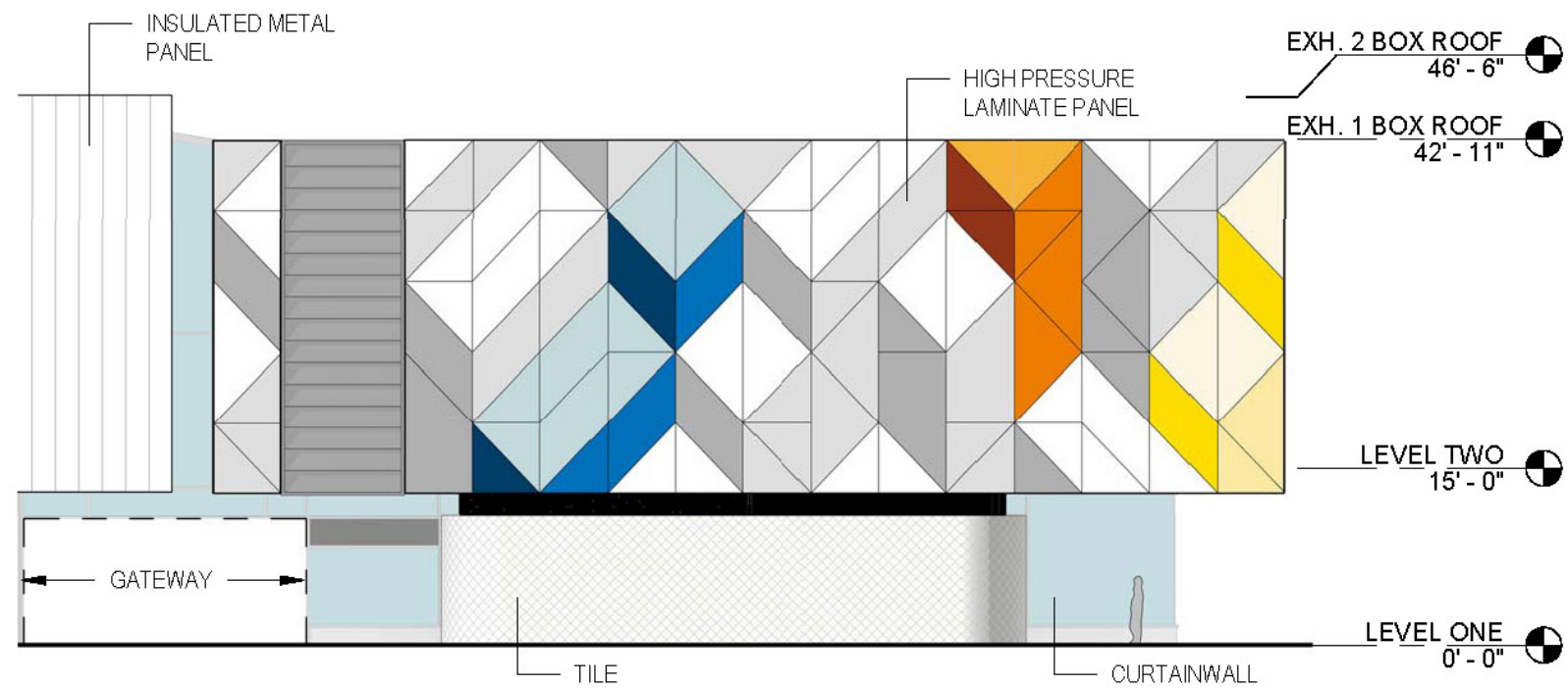


EXHIBIT BOX EAST

1/16" = 1'-0"

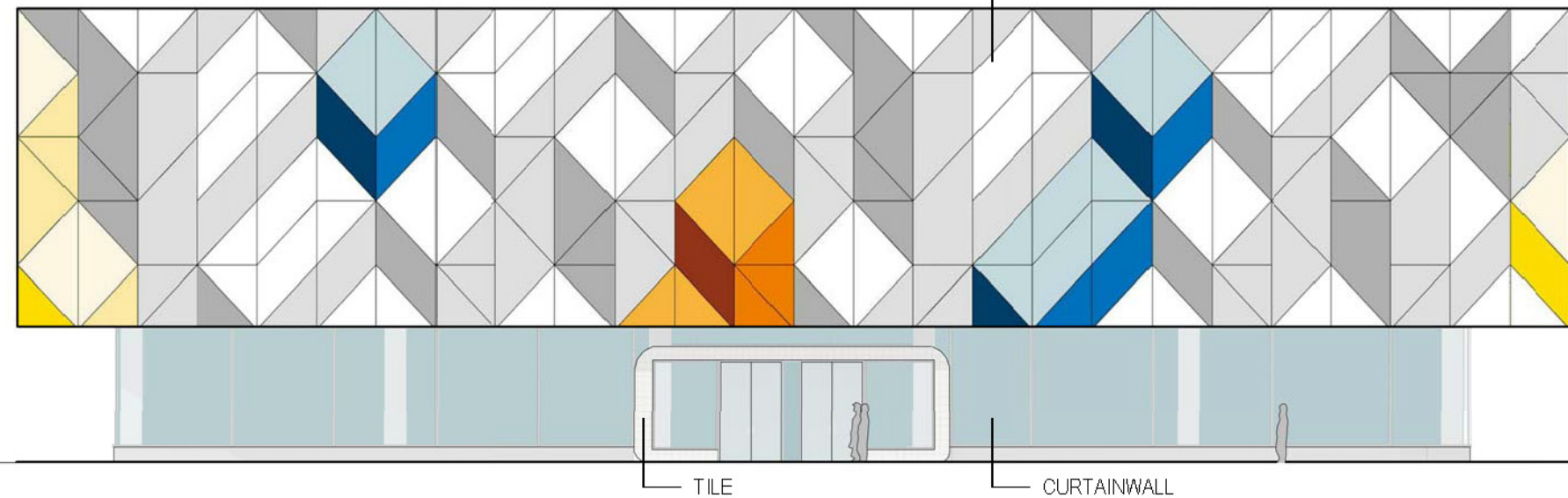
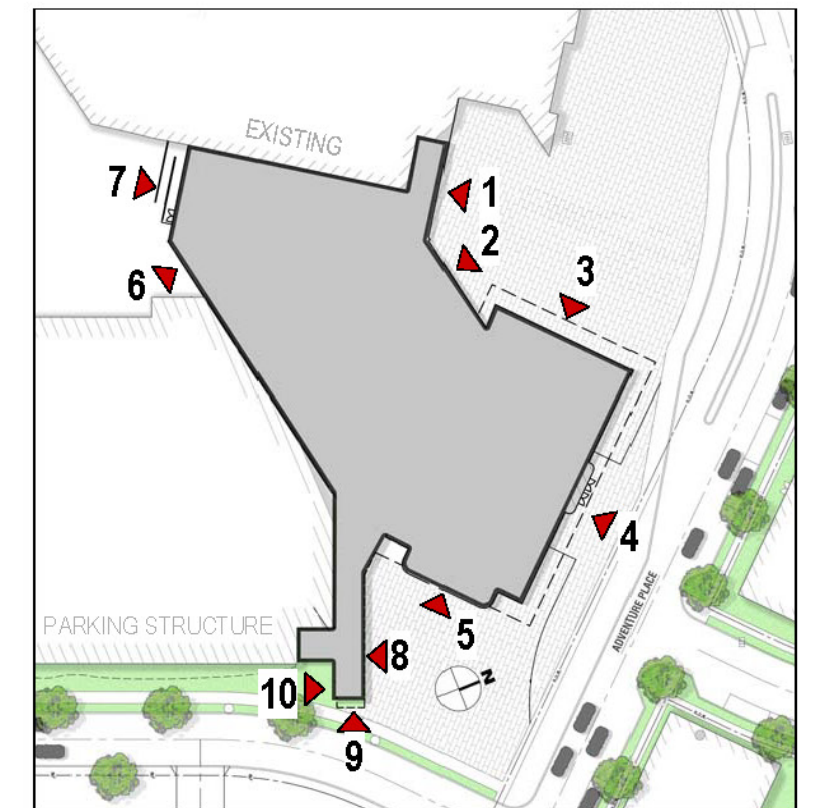


EXHIBIT BOX NORTH

1/16" = 1'-0"

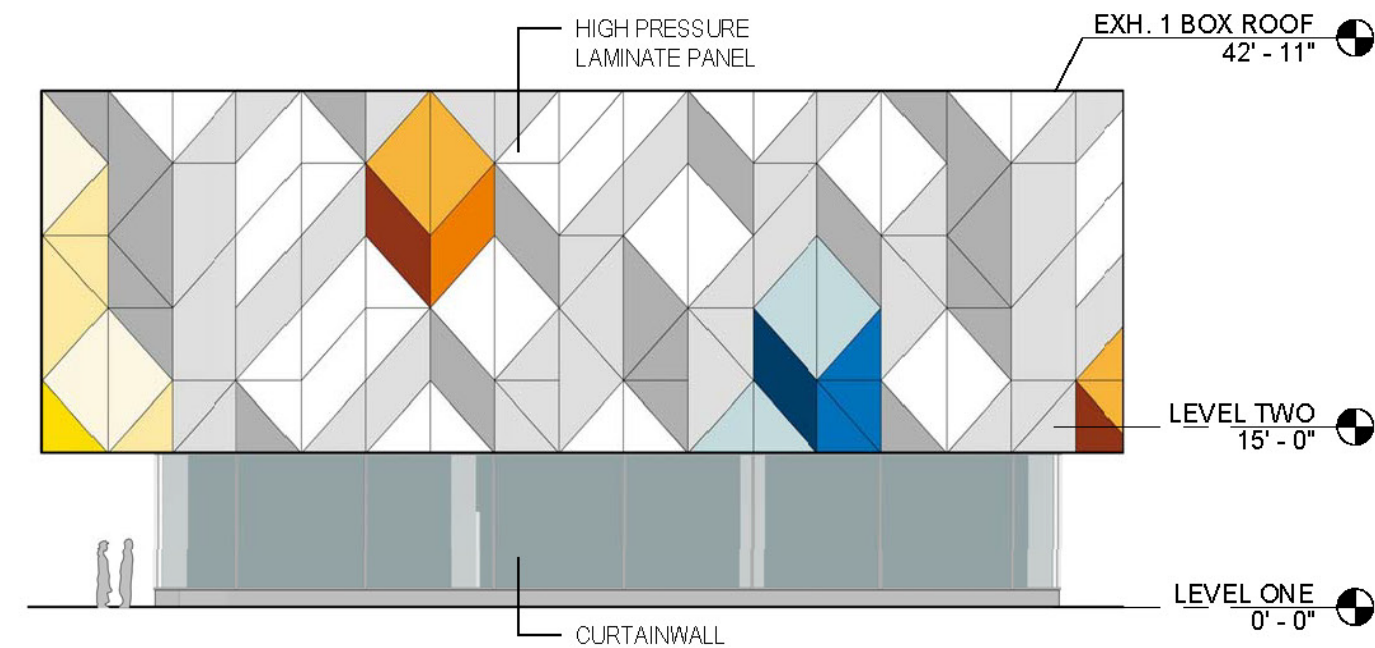
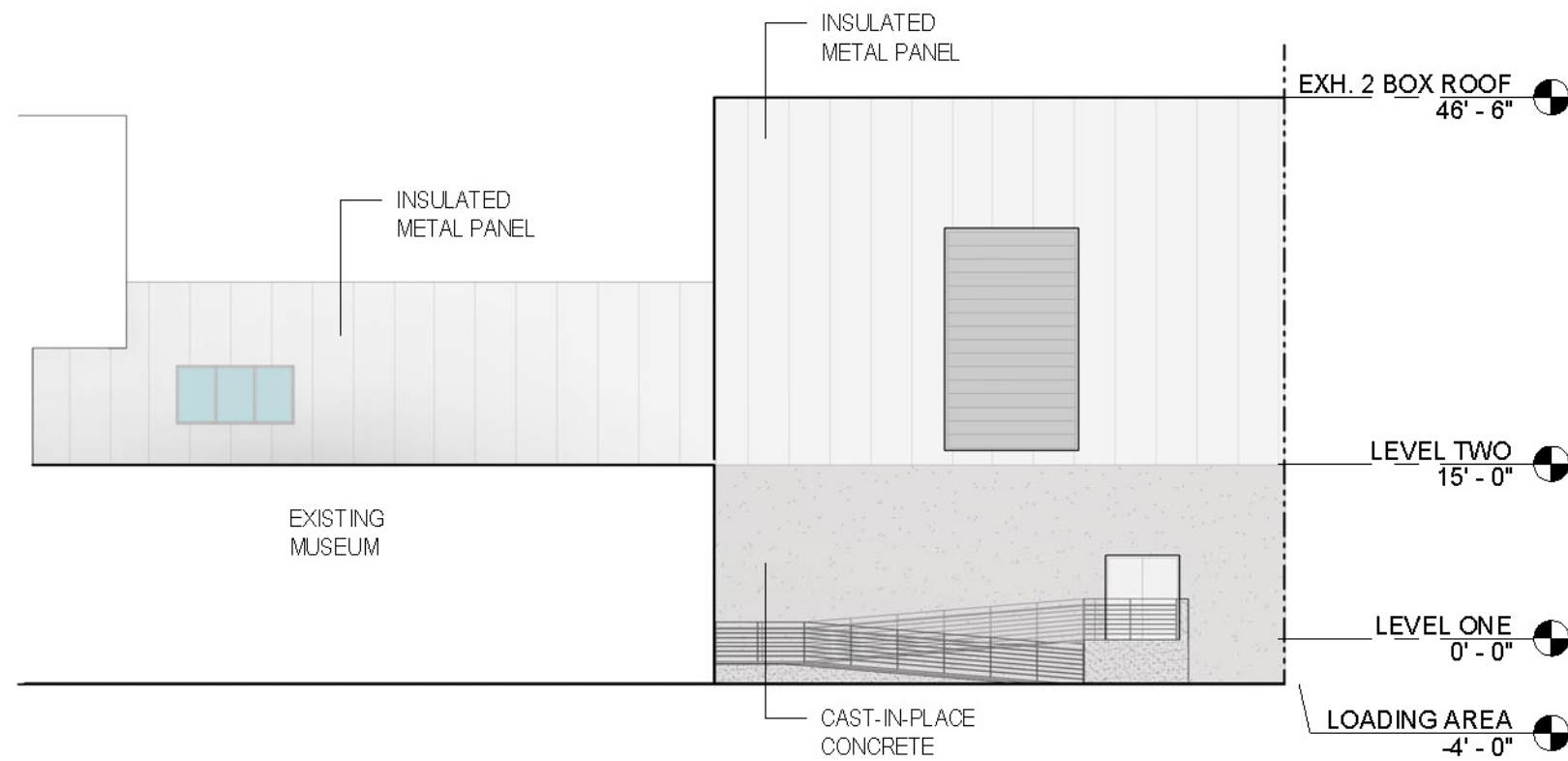
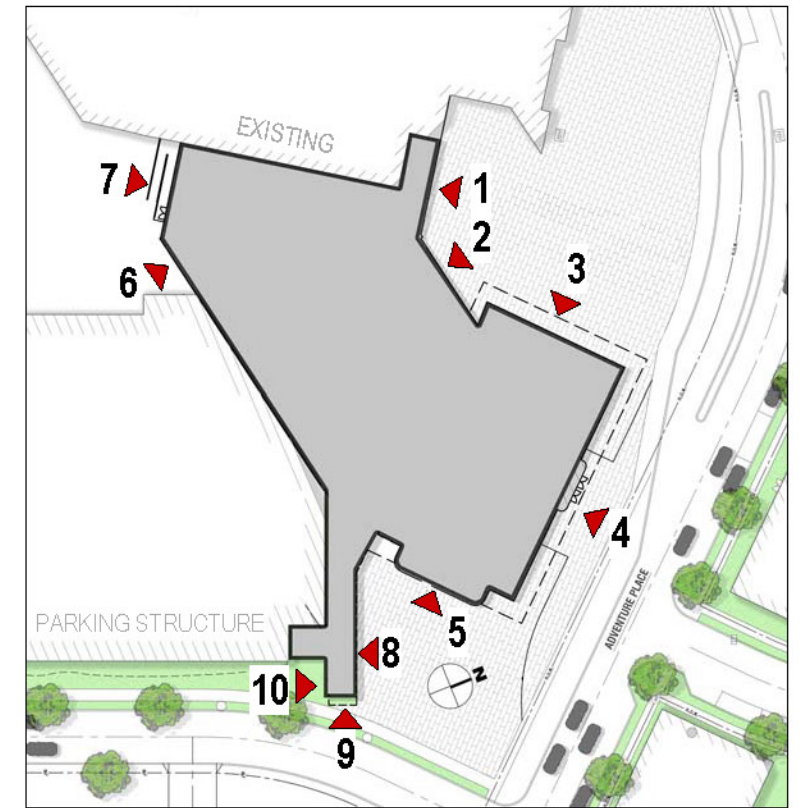
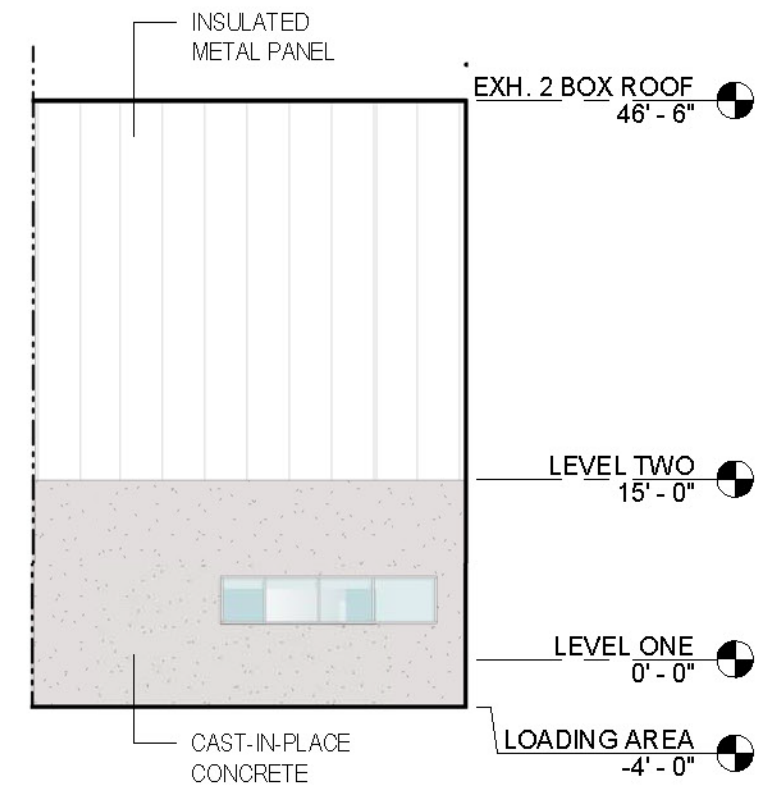


EXHIBIT BOX WEST

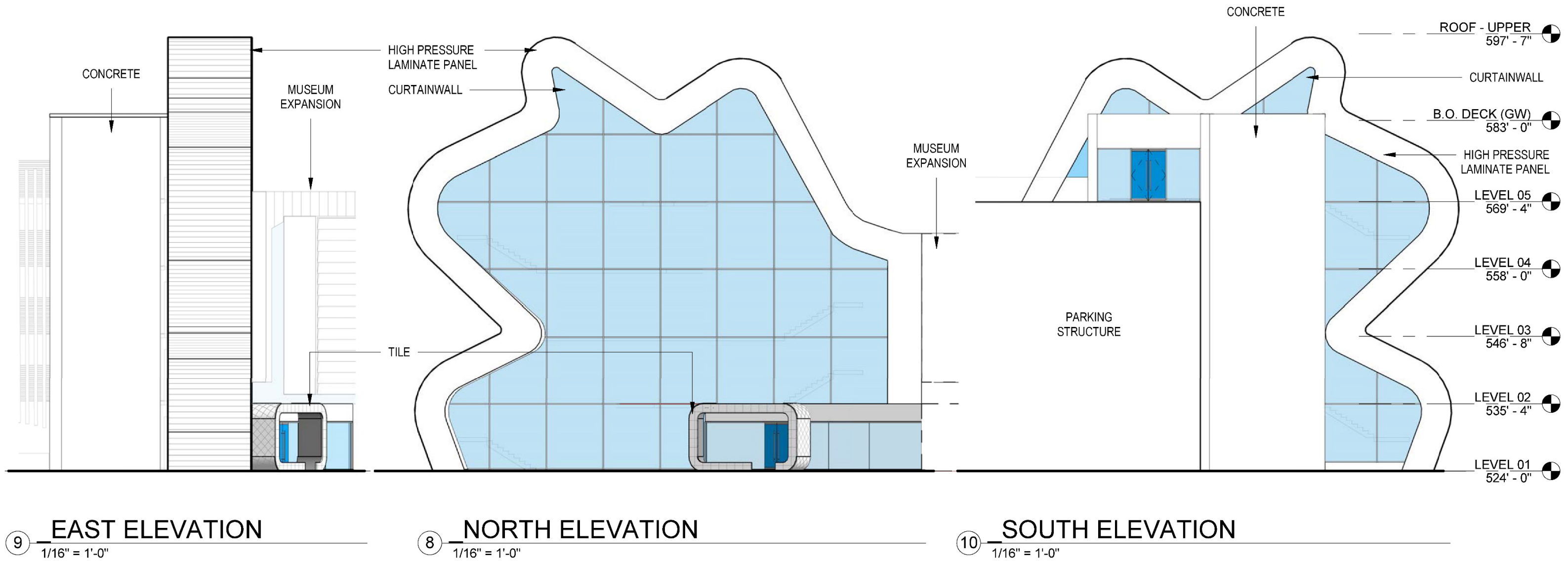
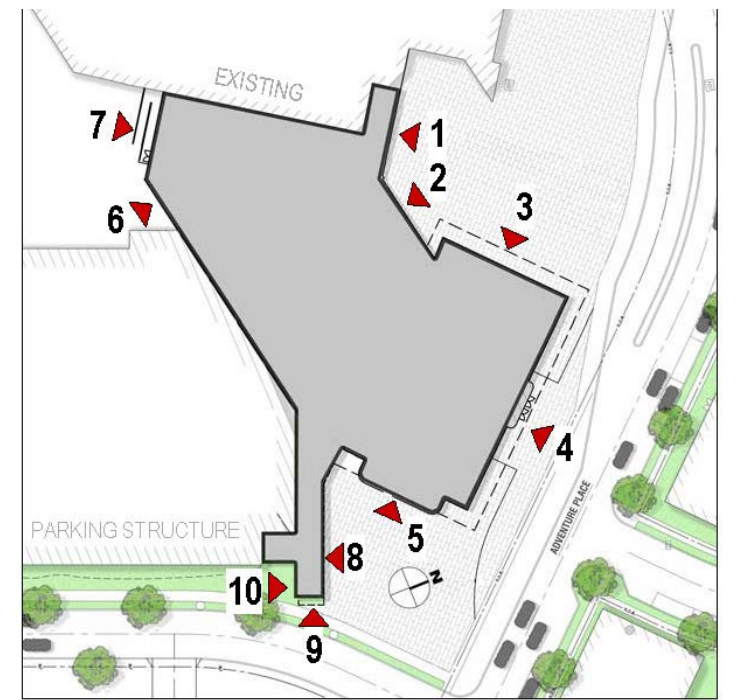
1/16" = 1'-0"



7 **LOADING DOCK NORTH**
1/16" = 1'-0"



6 **LOADING DOCK WEST**
1/16" = 1'-0"



GATEWAY ELEVATIONS