



## **NOTICE OF INTENT TO SOLICIT BIDS**

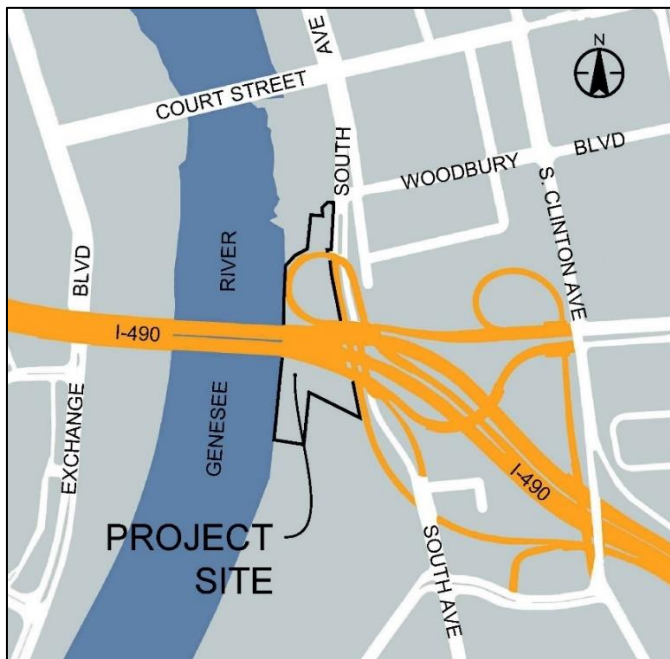
The City of Rochester, NY hereby provides notice of the intent to solicit bids for the construction of phase one of the ROC City Skate Park. The project will require qualified contractor(s) who can show experience in specialty skate park construction and can meet New York State Department of Transportation (NYSDOT) requirements for Minority/Woman-Owned Business Enterprise (M/WBE) participation.

### Project Description

The ROC City Skate Park will be an inclusive, wheel-friendly, public skate park on NYSDOT property below I-490 and the Frederick Douglass-Susan B. Anthony Memorial Bridge. Located alongside the existing Genesee Riverway Trail, the skate park is imagined as an urban park that will enhance the outdoor recreation experience for walkers, joggers, and cyclists while maintaining a connection to the waterfront and other parks in the area. This custom-concrete skate park will boast multiple wheel-friendly features such as a main skate promenade, mini-ramps and ledges, and a competition bowl.

Phase One is projected to be 12,000 – 15,000 SF. In addition to custom concrete skate features, the project will include soil removal/disposal and site grading, as well as installation of utilities, site walls, railings, asphalt trail surfacing, site furnishings, lighting, and plantings. Soil removal and disposal will involve regulated waste (approximately 25% direct fill, 75% daily cover). Hazardous waste removal is not anticipated. See drawings for more information.

### Project Location



### Anticipated Project Schedule

The ROC City Skate Park is currently in the design development phase. However, the project details may change as the detailed design is finalized. The City of Rochester reserves the right to change the design from what is shown in the attached drawings.

Groundbreaking is planned for fall 2019. Winter shut down will be required, with the majority of construction happening in spring/summer 2020. Substantial completion is projected for late summer/early fall 2020. Approximately 6-7 months of construction are anticipated for this ROC the Riverway project.

Bid Advertisement	Late June 2019
Bid Opening	Late July 2019
Award	October 2019
Notice to Proceed	Early November 2019

### Qualifications Required

The Bidder and/or its Subcontractor(s) must demonstrate previous specialty skate park construction experience. This qualification is required for specialty skate park items only. Other work normally performed by a general contractor (site grading, drainage, paving, concrete flatwork, landscaping, site lighting, etc.) that is considered site work does not require qualification. The City of Rochester, NY will require certified supporting data in order to determine whether the Bidder and/or its Subcontractor(s) have the requisite specialty skate park construction experience.

Required experience includes: A) three public concrete skate park facilities constructed in the last five years with a minimum skating area of 12,000 square feet that are open and in good operating condition for at least one year, including one that is in area with a climate comparable to Rochester, NY; B) a list of all concrete skate park construction projects that are in progress (with a construction agreement) or which are complete but have been open and in operation for less than one year; and C) the shotcrete construction process shall be performed by an ACI-certified Shotcrete Nozzleman (Wet-Mix Process).

### M/WBE Utilization

NYSDOT requires 25% M/WBE participation in construction projects (10% MBE and 15% WBE). Subcontractors can be utilized to reach this goal.

### Contact Information

For more information, please contact:

Malinda Gaskamp, RLA  
Senior Associate  
Stantec  
61 Commercial Street, Suite 100  
Rochester, NY 14614  
585 413-5211  
[malinda.gaskamp@stantec.com](mailto:malinda.gaskamp@stantec.com)

Ellen Micoli Soffa, RLA  
Project Manager  
City of Rochester Dept. of Environmental Services  
30 Church Street, Room 300B  
Rochester, NY 14614  
585-428-3692  
[ellen.soffa@cityofrochester.gov](mailto:ellen.soffa@cityofrochester.gov)

## Specialty Skate Park Contractors

The following skate park contractors are likely to meet the qualification requirements for the ROC City Skate Park, but should be contacted individually to verify their experience, availability and interest in this project. Inclusion on this list should not be considered an endorsement by the City of Rochester, nor an indication that the City has verified that they are qualified. Further, this list is intended for information purposes only, and is not necessarily comprehensive.

### **SPA Skateparks**

1301 Orlando Rd.

Austin, TX 78733

Contact: Yann Curtis

Phone: 512.203.5445

Email: [info@spaskateparks.com](mailto:info@spaskateparks.com)

Website: [www.SPAskateparks.com](http://www.SPAskateparks.com)

### **Grindline**

4619 14th Avenue SW

Seattle, WA 98106

Contact: Matt Fluegge

Office: 206-932-6414

Cell: 206-612-3401

Email: [matt@grindline.com](mailto:matt@grindline.com)

### **California Skateparks/ California Landscape & Design**

273 N. Benson Av

Upland, CA 91768

Contact: Misty Ruiz/ Roger Lovingood

Phone: 909-949-1601

Email: [misty@californiaskateparks.com](mailto:misty@californiaskateparks.com)

[roger.lovingood@calandscape.com](mailto:roger.lovingood@calandscape.com)

### **Dreamland Skateparks**

960 SE Hwy 101

PMB384

Lincoln City, OR 97367-2622

Phone: 503-577-9277

Email: [danyel@fastmail.fm](mailto:danyel@fastmail.fm)

### **Wally Hollyday Skateparks**

Contact: Wally Hollyday, Principal

Phone: 949-510-1515

Email: [wally@skatedesign.com](mailto:wally@skatedesign.com)

Website: [www.skatedesign.com](http://www.skatedesign.com)

### **Team Pain**

890 Northern Way / Suite D-1

Winter Springs, FL 32708

Contact: Tim Payne

Phone: 407-366-9221

Email: [info@teampain.com](mailto:info@teampain.com)

### **Spohn Ranch Skateparks**

15131 Clark Avenue

City of Industry, CA 91745

Phone: 877-489-3539

Email: [info@skateboardparks.com](mailto:info@skateboardparks.com)

### **Artisan Skateparks**

4600 Tamarack Drive,

Kitty Hawk, NC 27949

Contact: Andy Duck

Phone: 252-202-1333

Email: [andy@artisanskateparks.com](mailto:andy@artisanskateparks.com)



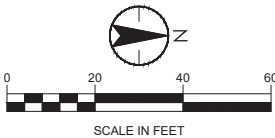
# Roc City Skate Park: Phase 1

Phase 1 Skate Area = 12,100 + 2,200 SF Add Alt = 14,300 SF

3-4-2019







1. (1) PICNIC TABLE TO BE TABLY #6 PARK TABLE WITH STEEL TABLE TOP, RECTANGULAR LEGS AND (2) RADIUM #6 STEEL PARK BENCHES AS MANUFACTURED BY MMCLITE. LANDSCAPE REPRESENTATIVE: SEAN SMITH, JETTY 14 DESIGN GROUP (917) 716-6242. FINAL COLORS TO BE SELECTED BY LANDSCAPE ARCHITECT.
2. (3) BIKE RACKS TO BE GOMEZ RUBBER HOOP REINFORCED WITH INNER STEEL PROFILE WITH POWDER COATED ALUMINUM BOTTOM PARK. LANDSCAPE REPRESENTATIVE: SEAN SMITH, JETTY 14 DESIGN GROUP (917) 716-6242. FINAL COLORS TO BE SELECTED BY LANDSCAPE ARCHITECT.
3. (1) TRASH RECEPTACLE TO BE SAGE 36 GALLON, SIDE DEPOSIT, SIDE DOOR, LITTER RECEPTACLE WITH STANDARD CONVEX LID, PERFORATED STEEL PANELS AND GALVANIZED STEEL LINER AS MANUFACTURED BY VICTOR STANLEY. LANDSCAPE REPRESENTATIVE: ANDREW HOSMER (301) 875-6065. FINAL COLOR TO BE SELECTED BY LANDSCAPE ARCHITECT.

It is a violation of the NYS Education Law for any person, unless under the direction of a Licensed Professional Engineer, to alter this document in any way. Alterations must have the altering Engineer's seal offset to the document and the notation "Altered By" along with a description of the alterations, date of the alteration and the Professional Engineer's signature.

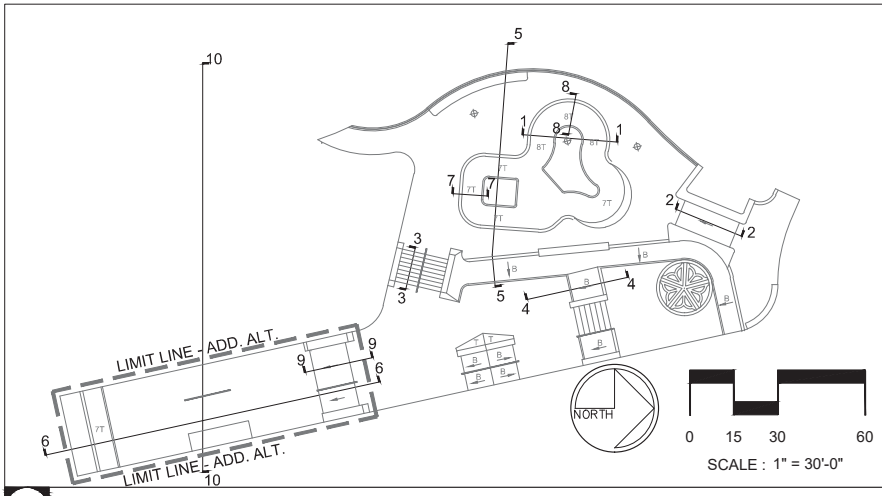
These documents contain potentially sensitive information and shall only be used for their intended purpose. Once the intended purpose has ceased, the documents shall be destroyed in a secure manner.

Copyright Reserved

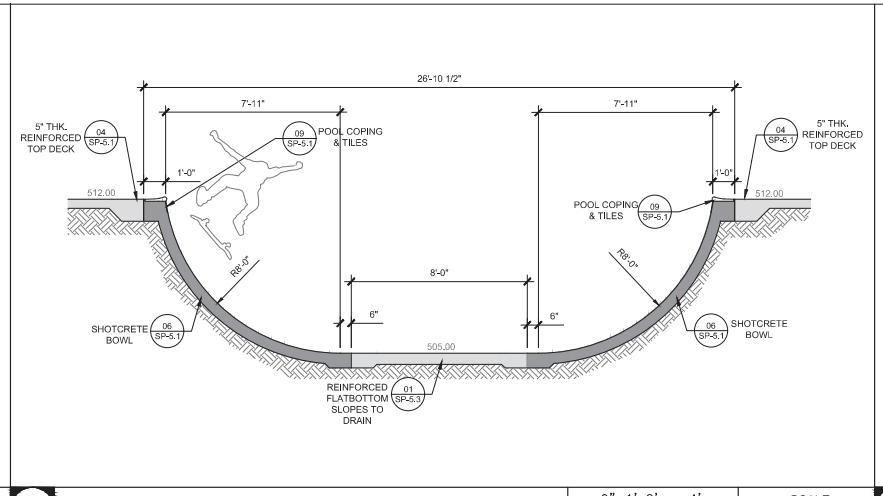
The Contractor shall verify and be responsible for all dimensions. DO NOT scale the drawing - any errors or omissions shall be reported to Stantec without delay.

The Copyrights to all designs and drawings are the property of Stantec. Reproduction or use for any purpose other than that authorized by Stantec is forbidden.

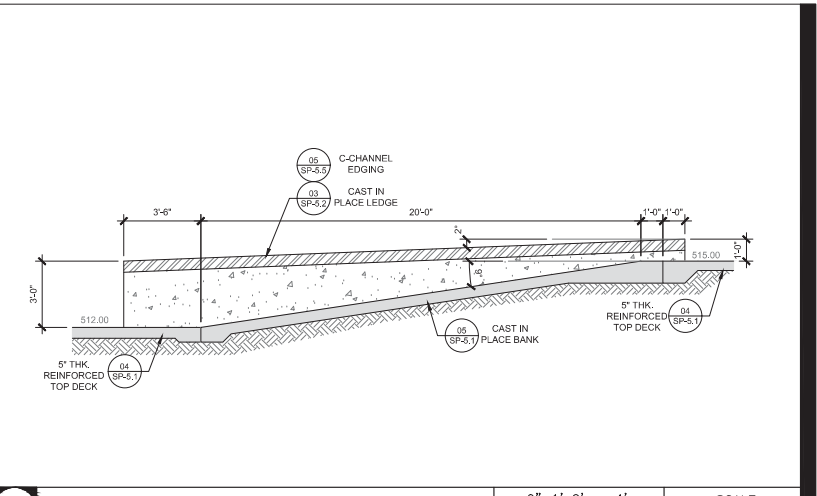
Consultants



**KEY MAP**



**1 SECTION**

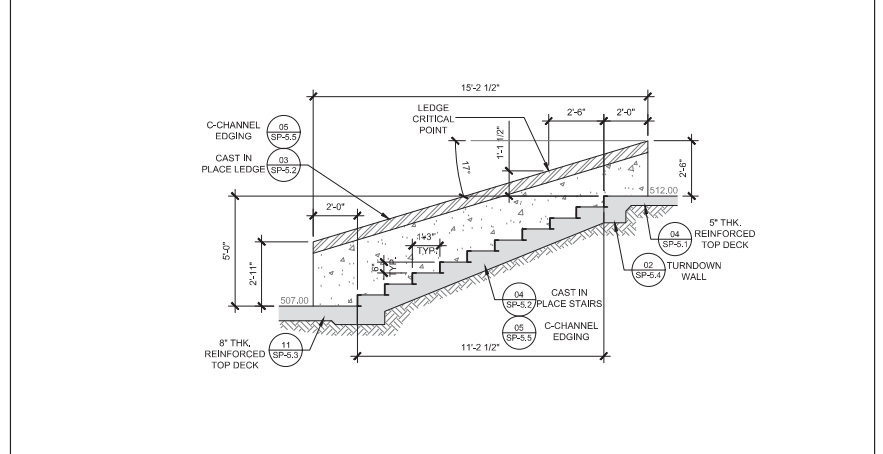


**2 SECTION**

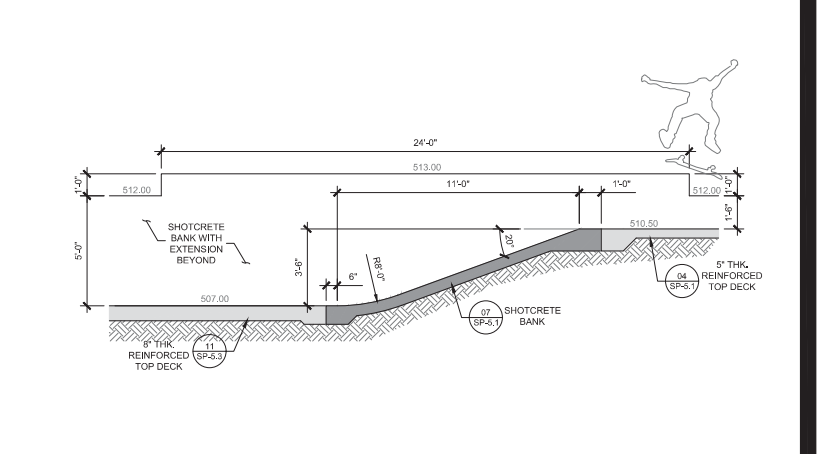
**SECTION GENERAL NOTES**

1. ALL SECTION DIMENSIONS ARE TOP OF CONCRETE FINISH GRADE UNLESS OTHERWISE NOTED.
2. DO NOT INCLUDE METAL FABRICATION OFFSET TO OVERALL DIMENSIONS SHOWN IN SECTIONS AND PROFILES.
3. REFER TO SKATE PARK LAYOUT PLAN SHEETS: SP-2.1/ SP-2.2 FOR ACTUAL HORIZONTAL LOCATIONS.
4. FINAL GRADE EARTHWORK AND FORMWORK TO BE REVIEWED AND APPROVED BY SKATE PARK DESIGN TEAM. SKATE PARK DESIGN TEAM RESERVES THE RIGHT TO MAKE FIELD ADJUSTMENTS AS NECESSARY TO FULFILL THE DESIGN INTENT.
5. ALL DIMENSIONS AT BOTTOM OF BOWLS, EMBANKMENTS, TRANSITIONS ARE LOCATED AT THE COLD JOINT.
6. DUE TO THE UNIQUE AND SCULPTURAL ASPECTS OF THE SKATE PARK THE LOCATION OF THE DIMENSIONS IN THE SECTIONS NEED TO BE CROSS REFERENCED BY THE SKATE PARK LAYOUT PLAN SHEETS: SP-2.1/ SP-2.3.
7. CONTRACTOR SHALL HAVE EXTENSIVE KNOWLEDGE AND EXPERIENCE OF SKATE PARK CONSTRUCTION AND/ OR FREEFORM PRECISION CONCRETE FORMING, APPLICATION AND FINISHING TO PROPERLY INTERPRET SECTIONS/ PROFILES.
8. METAL FABRICATION NOT SHOWN ON SECTIONS - REFER TO MATERIALS PLAN - METALS AND DETAILS SHEETS FOR TYPE AND LOCATION.
10. REFER TO SKATE PARK GRADING AND DRAINAGE PLAN ON SHEET SP-3.1 FOR FINISHED GRADE (F.G.) ELEVATIONS.
11. REFER TO CIVIL DETAIL SHEETS FOR BASE MATERIAL TYPE AND DEPTH.
12. REFER TO GEO-TECHNICAL EVALUATION REPORT INCLUDED IN THE PROJECT SPECIFICATIONS FOR RECOMMENDATIONS ON DESIGN/CONSTRUCTION, SUB-GRADE PREPARATION, STRUCTURE, UTILITIES, STORMWATER AND EQUIPMENT SUPPORT.

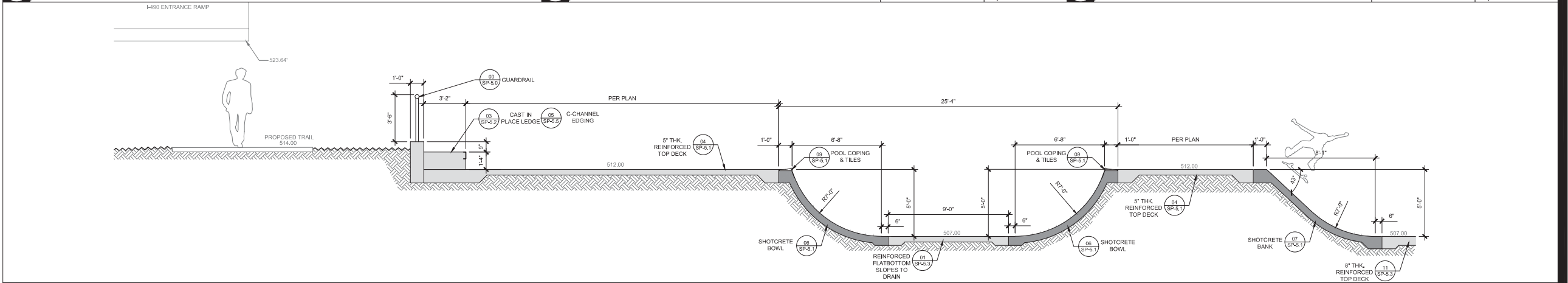
**NOTES**



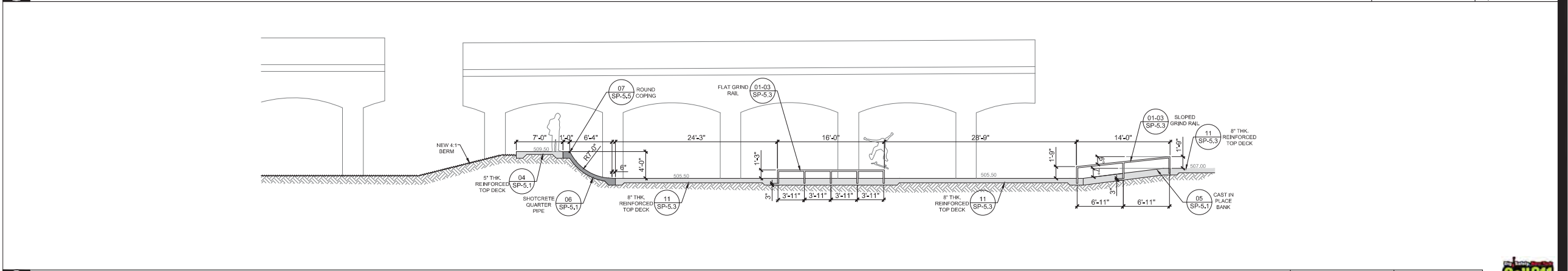
**3 SECTION**



**4 SECTION**



**5 SECTION**



**6 SECTION**

1	80% REVIEW DOCUMENTS	AAP	KMG	19.04.15
Issued		By	Appd.	YY.MM.DD

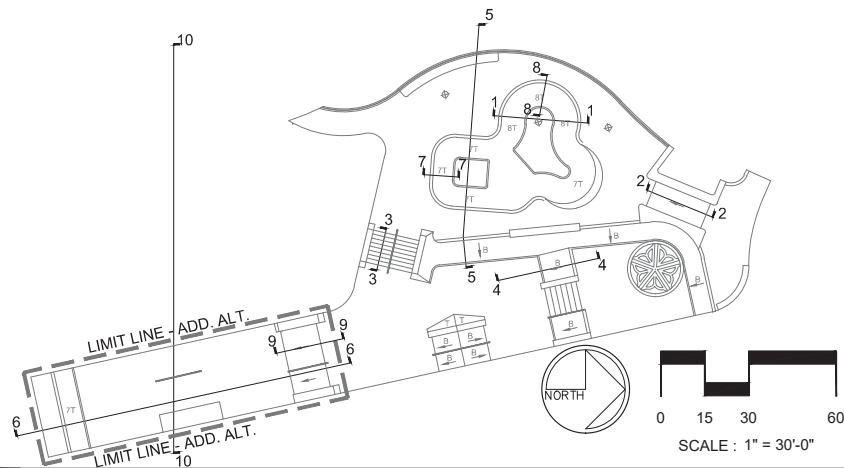
Permit-Seal

Client/Project  
City of Rochester  
ROC City Skate Park  
PC # 132044 P.I.N. 4RTR06 D036379  
Rochester, New York

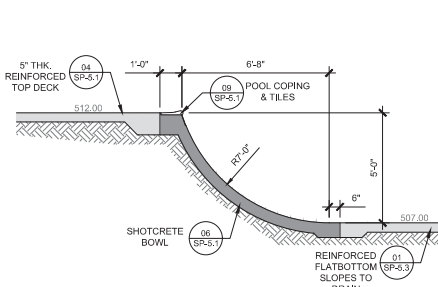
SKATE PARK - SECTIONS

Project No.	Scale
192800111	
Drawing No.	Sheet
	Revision

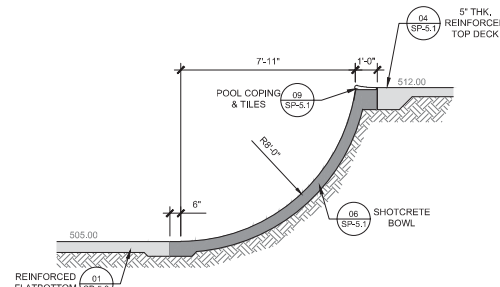
SP-4.1 of X



KEY MAP



SECTION 7

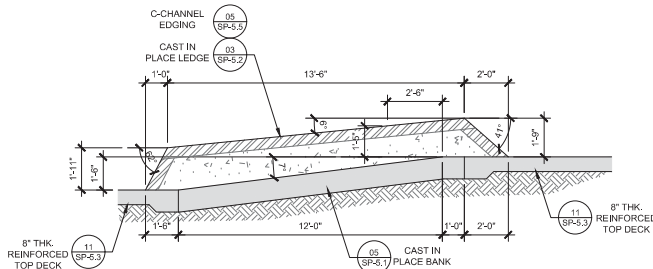


SECTION 8

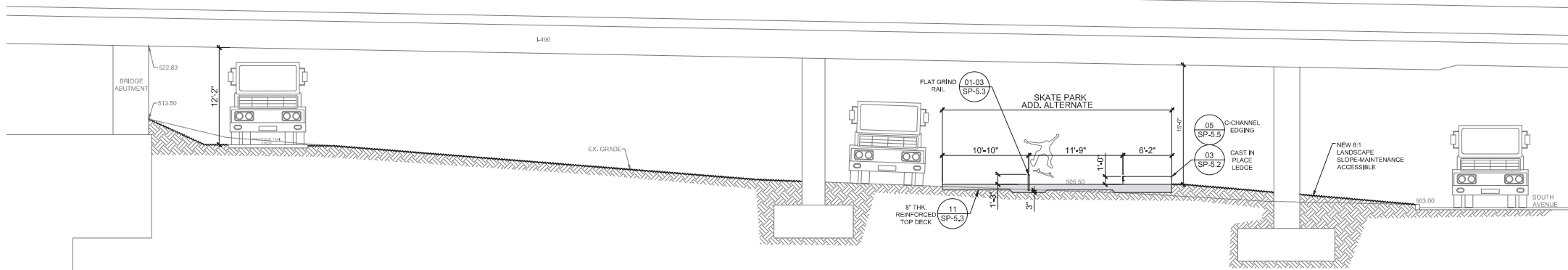
SECTION GENERAL NOTES

1. ALL SECTION DIMENSIONS ARE TOP OF CONCRETE FINISH GRADE UNLESS OTHERWISE NOTED.
2. DO NOT INCLUDE METAL FABRICATION OFFSET TO OVERALL DIMENSIONS SHOWN IN SECTIONS AND PROFILES.
3. REFER TO SKATE PARK LAYOUT PLAN SHEETS: SP-2.1/ SP-2.2 FOR ACTUAL HORIZONTAL LOCATIONS.
4. FINAL GRADE EARTHWORK AND FORMWORK TO REVIEWED AND APPROVED BY SKATE PARK DESIGN TEAM. SKATE PARK DESIGN TEAM RESERVES THE RIGHT TO MAKE FIELD ADJUSTMENTS AS NECESSARY TO FULFILL THE DESIGN INTENT.
5. ALL DIMENSIONS AT BOTTOM OF BOWLS, EMBANKMENTS, TRANSITIONS ARE LOCATED AT THE COLD JOINT.
6. DUE TO THE UNIQUE AND SCULPTURAL ASPECTS OF THE SKATE PARK THE LOCATION OF THE DIMENSIONS IN THE SECTIONS NEED TO BE CROSS REFERENCED BY THE SKATE PARK LAYOUT PLAN SHEETS: SP-2.1/ SP-2.3.
7. CONTRACTOR SHALL HAVE EXTENSIVE KNOWLEDGE AND EXPERIENCE OF SKATE PARK CONSTRUCTION AND/ OR FREEFORM PRECISION CONCRETE FORMING, APPLICATION AND FINISHING TO PROPERLY INTERPRET SECTIONS/ PROFILES.
8. METAL FABRICATION NOT SHOWN ON SECTIONS - REFER TO MATERIALS PLAN - METALS AND DETAILS SHEETS FOR TYPE AND LOCATION.
10. REFER TO SKATE PARK GRADING AND DRAINAGE PLAN ON SHEET SP-3.1 FOR FINISHED GRADE (F.G.) ELEVATIONS.
11. REFER TO CIVIL DETAIL SHEETS FOR BASE MATERIAL TYPE AND DEPTH.
12. REFER TO GEO-TECHNICAL EVALUATION REPORT INCLUDED IN THE PROJECT SPECIFICATIONS FOR RECOMMENDATIONS ON DESIGN/CONSTRUCTION, SUB-GRADE PREPARATION, STRUCTURE, UTILITIES, STORMWATER AND EQUIPMENT SUPPORT.

NOTES

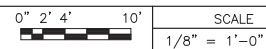


SECTION 9



SECTION 10

SECTION 11



1	80% REVIEW DOCUMENTS	AAP	KMG
Issued		By	Appd.

Permit-Seal

Client/Project

City of Rochester  
ROC City Skate Park

PC # 132044 P.I.N. 4RTR06 D036379

Rochester, New York

Title

SKATE PARK - SECTIONS

Project No.

Scale

Drawing No.

Sheet

Revision

SP-4.2

of x

