

Prepared For:
City of Rochester
Department of Environmental Services
Bureau of Architecture and Engineering
414 Andrews Street
Rochester, NY 14604

Submitted by:
LaBella Associates
300 State St.
Suite 201
Rochester, NY 14614



RUNDEL LIBRARY Parapet Monitoring

JULY 2019

LBA PROJECT NO. 217916.08



July 11, 2019

Brian Grinnell, AIA NCARB
Architect
City of Rochester
Department of Environmental Services
Bureau of Architecture and Engineering
414 Andrews Street
Rochester, NY 14604

**RE: Rundel Library High Parapet Monitoring
115 South Avenue, Rochester NY
LaBella Project No. 2171916.08**

Dear Brian,

LaBella Associates D.P.C. (LBA) performed a second visual inspection and photo documentation of the Rundel Library's high parapets, located at 115 South Avenue in Rochester N.Y. This letter summarizes our observations, professional assessment and any recommendations.

SCOPE OF WORK

(10) Crack gauges were installed on June 6th, 2019 on the inside face of the taller parapets in order to document any changes that would suggest movement of the masonry. (6) gauges were installed on the riverside parapet, with (2) being placed on the exterior stone, and (4) were installed on the street main entrance parapets.

PROJECT BACKGROUND

The exterior stone façade on the riverside taller parapets had become dislodged where some had fallen off, while others have been braced back by new steel brackets. Cracks were noticed on the inside face of the parapets but unknown if this was related to the stone issue. Crack gauges were installed to monitor any further movement.

FIELD OBSERVATIONS

The first round of photo documentation was taken to set a baseline for monthly observations to use for comparison.

DISCUSSION AND RECOMMENDATIONS

Gauges were installed and set to zero, and will be documented once a month, next being Thursday August 8th.

Respectfully submitted,

LABELLA ASSOCIATES, D.P.C.

Andrew Karlson, PE, Assoc. AIA
Structural Engineer | Buildings Engineering



APPENDIX A

SITE PHOTOS



PHOTO 1
N.W. Riverside Corner
3/8" Wall Separation



PHOTO 2
S.W. Riverside Corner
Mortar Crack



PHOTO 3

N.W. Riverside Straight

Horizontal Mortar Joint Crack



PHOTO 4

W. Riverside Straight

Horizontal Mortar Joint Crack



PHOTO 5

S.W. Riverside Straight

Horizontal Mortar Joint Crack



PHOTO 6

N.W. Riverside Exterior

3/8" Vertical Joint Separation





PHOTO 7

S.W. Riverside Exterior

Vertical Joint Separation



PHOTO 8

S.E.S. Entrance Corner

Vertical Joint Separation





PHOTO 9
S.E.N. Entrance Corner
Vertical Joint Separation



PHOTO 10
N.E.S. Entrance Corner
Vertical Joint Separation



PHOTO 11

N.E.N. Entrance Corner

Vertical Joint Separation



PHOTO 1A - DETAILED



0_{mm} Movement



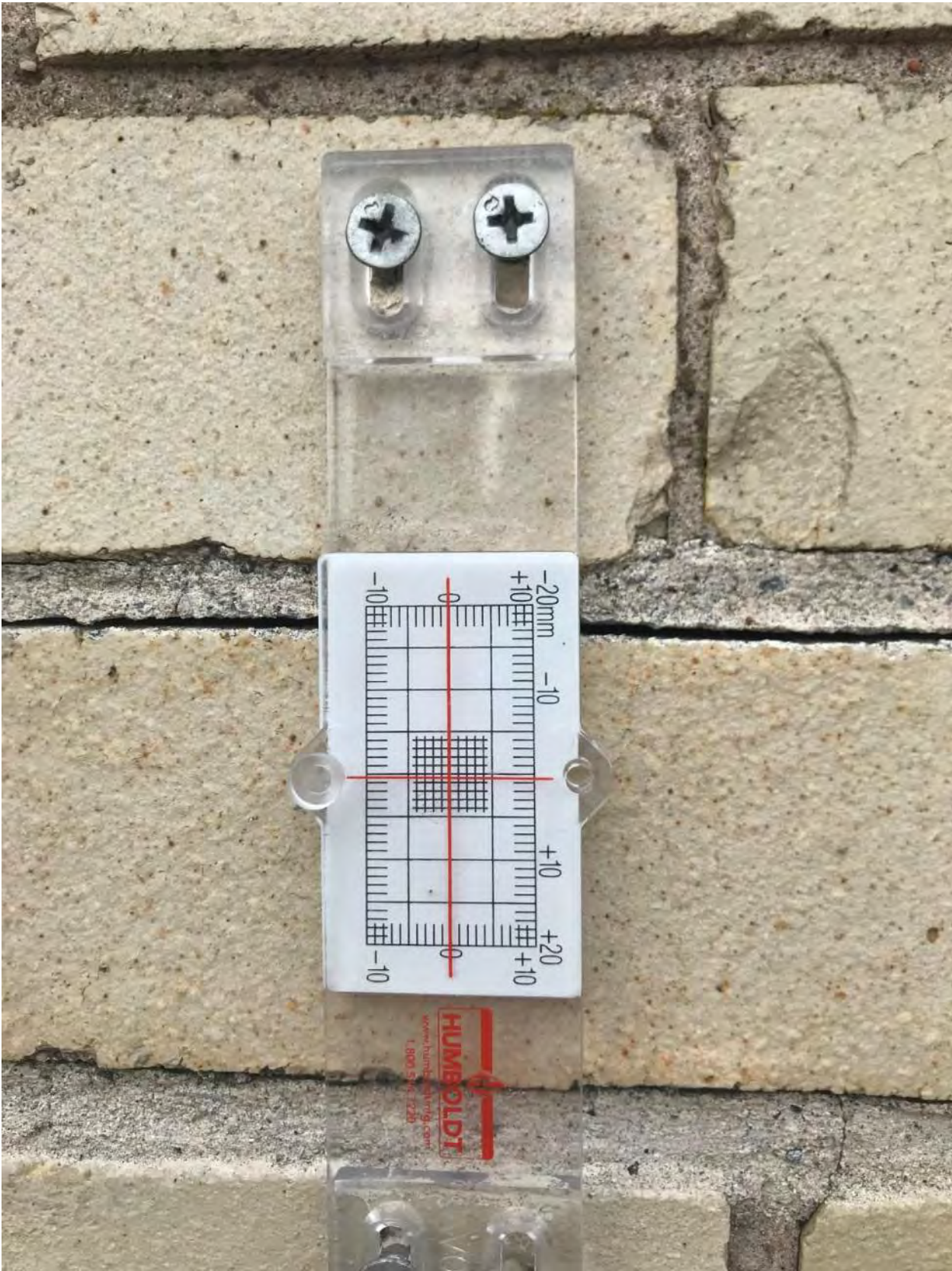
PHOTO 2A - DETAILED



0_{mm} Movement



PHOTO 3A - DETAILED



0.55mm Movement



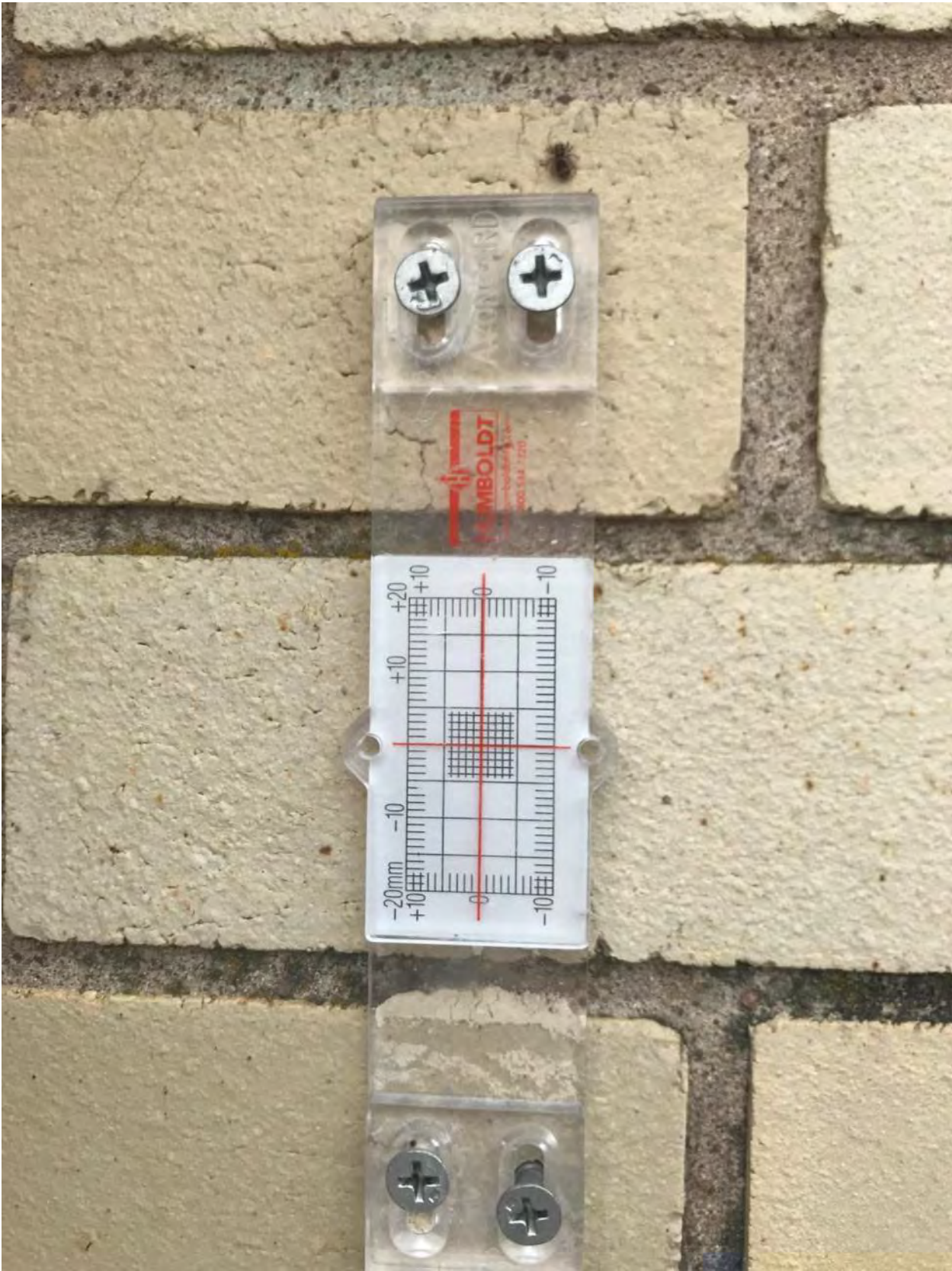
PHOTO 3B - DETAILED



Gauge out of plane



PHOTO 4A - DETAILED



0_{mm} Movement



PHOTO 4B - DETAILED



Gauge slightly out of plan



PHOTO 5A - DETAILED



0_{mm} Movement



PHOTO 5B - DETAILED



Gauge out of plane



PHOTO 6A - DETAILED



0_{mm} Movement



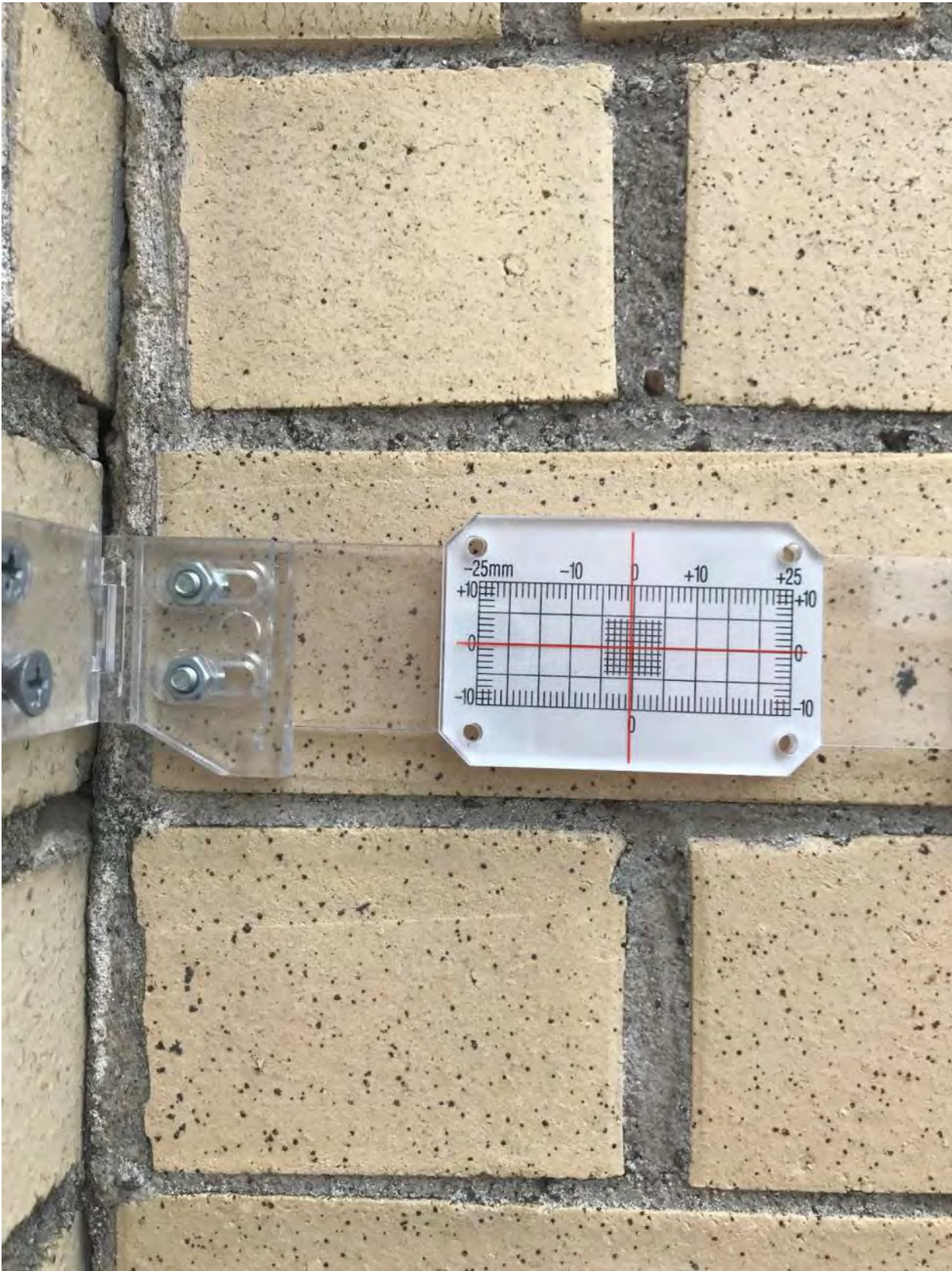
PHOTO 7A - DETAILED



0_{mm} Movement



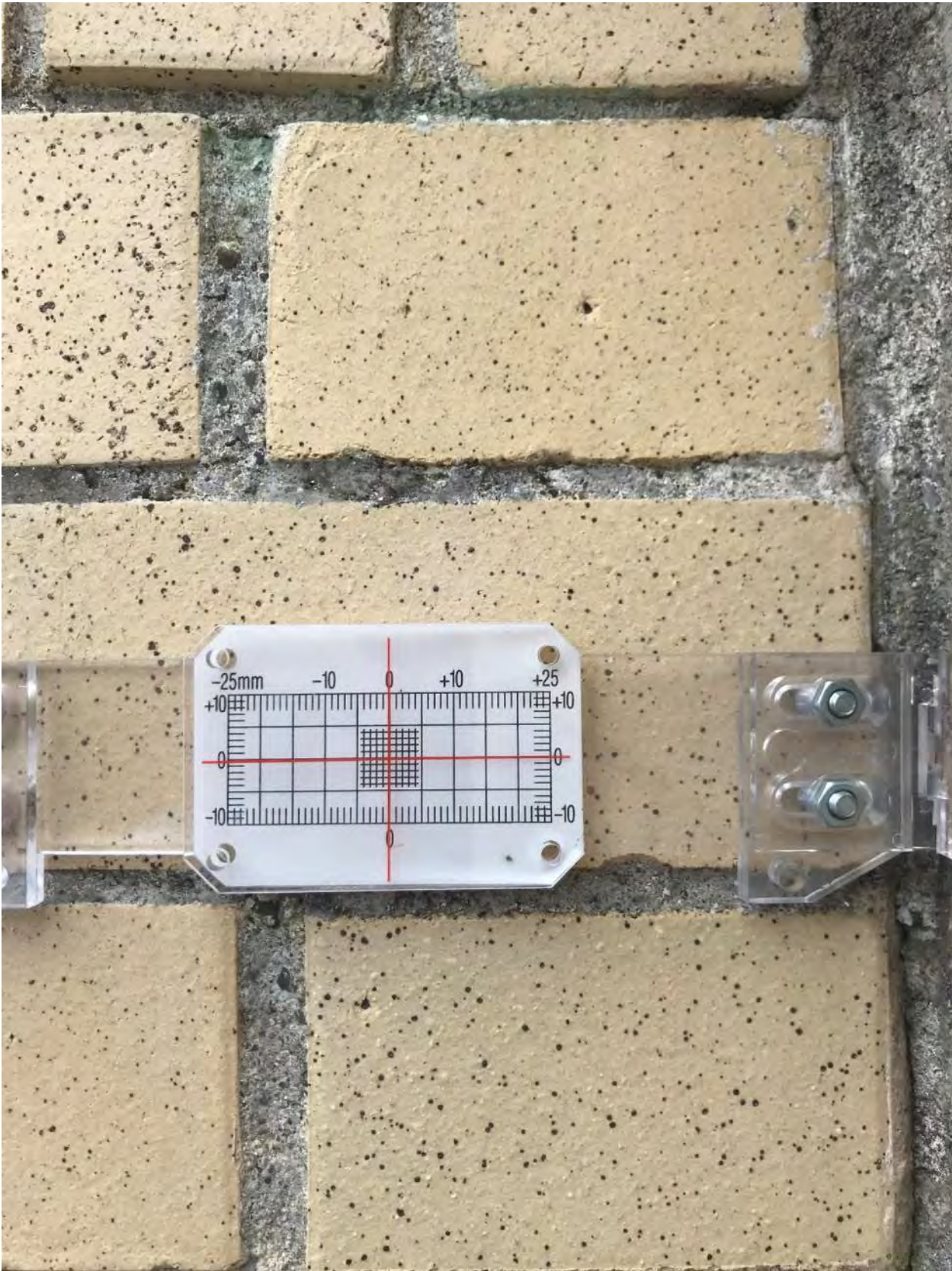
PHOTO 8A - DETAILED



0.5_{mm} Horizontal Movement



PHOTO 9A - DETAILED



0_{mm} Movement



PHOTO 9B - DETAILED



Gauge out of plane



PHOTO 10A - DETAILED



0.5_{mm} Horizontal Movement | 1.5_{mm} Vertical Movement



PHOTO 11A - DETAILED



0_{mm} Vertical Movement