

B.I.N. 2211290

Region 4 County MONROE

Feature Carried PONT DE RENNES (RED BRIDGE)

Feature Crossed GENESEE RIVER

General Recommendation 4

# 2012 INSPECTION

REVIEWED BY James A. Namiecha  
TITLE QUALITY CONTROL ENGINEER

# INSPECTION

BD 219 (10/95)

RC-BIN 43 - 2211290  
 TEAM LEADER TIM HOWLAND  
 Signature *Tim Howland*  
 P.E. NUMBER 083472 STATE NY  
 ASST TEAM LEADER ROB FLEMING  
 RAMP BRIDGE ATTACHED TO SPAN \_\_\_\_\_ BIN \_\_\_\_\_

NYS DEPT. OF TRANSPORTATION

BRIDGE INSPECTION REPORT

SHEET 1 OF 15

DATE 

MO	DAY	YEAR
<u>11</u>	<u>08</u>	<u>12</u>
13 14	15 16	17 18

INSPECTION AGENCY 13 TYPE OF INSPECTION 5 1-BIENNIAL 3-IN DEPTH 5-SPECIAL  
 19 20 21 2-INTERIM 4-NONE/UNDER CONTRACT

STATE HWY. NO. \_\_\_\_\_ MILEPOINT: \_\_\_\_\_ POLIT. UNIT: \_\_\_\_\_

FEATURE(S) CARRIED: PONT DE RENNES (PED BRIDGE)FEATURE(S) CROSSED: GENESEE RIVERTOTAL SPANS: 9 BRIDGE ORIENTED: EAST YEAR BUILT: 1898SUPERSTRUCTURE TYPE(S): STEEL TRUSS AADT/YR: NA

VERTICAL CLEARANCE AND LOAD POSTINGS  
 ON: Not Posted UNDER: Not Posted LOADING: N/A  

19	20	21	22	23	24	25	26	27	28	29	30

## ABUTMENTS:

	begin	end
Joint with deck	<u>3</u>	<u>4</u>
Bearings, anchor bolts, pads	<u>4</u>	<u>5</u>
Bridge seat and pedestals	<u>5</u>	<u>5</u>
Backwall	<u>5</u>	<u>5</u>
Stem (breastwall)	<u>5</u>	<u>5</u>
Erosion or scour	<u>5</u>	<u>5</u>
Footings	<u>9</u>	<u>9</u>
Piles	<u>8</u>	<u>8</u>
Recommendation	<u>4</u>	<u>5</u>

## WINGWALLS:

	begin	end
Walls	<u>5</u>	<u>5</u>
Footings	<u>9</u>	<u>9</u>
Erosion or scour	<u>5</u>	<u>5</u>
Piles	<u>8</u>	<u>8</u>

## STREAM CHANNEL:

Stream alignment	<u>5</u>
Erosion and scour	<u>5</u>
Waterway opening	<u>5</u>
Bank protection	<u>5</u>

## APPROACHES:

Drainage	<u>6</u>
Embankment	<u>5</u>
Settlement	<u>4</u>
Erosion	<u>5</u>
Pavement	<u>6</u>
Guide railing	<u>6</u>

GENERAL RECOMMEND 4

## ACCESS CATEGORY:

- WALKING
- RIGGED ACCESS PLATFORM

FLAG ISSUED? NONE ☒ 61  
 RED STRUCTURAL ☐ 62  
 YELLOW STRUCTURAL ☐ 63  
 SAFETY ☐ 64

## BRIEF REASON

REVIEWED BY James A. PanieckiP.E. NUMBER 057924DATE 2/26/2013

RC-BIN

$$\begin{array}{|c|c|} \hline 4 & 3 \\ \hline \end{array} - \begin{array}{|c|c|c|c|c|c|c|c|} \hline 2 & 2 & 1 & 1 & 2 & 9 & 0 & \\ \hline \end{array}$$

NYS DEPT. OF TRANSPORTATION  
BRIDGE INSPECTION REPORT  
SHEET 2 OF 15

TEAM LEADER: TIM HOWLAND

ASST TEAM LEADER: ROB FLEMING

DATE 

MO	DAY	YEAR
11	08	12
12 14	15 16	17 18

OTHERS:

Features carried: PONT DE RENNES (PED BRIDGE)

Features crossed: GENESSEE RIVER

[illegible]

DIVING INSPECTION REQUIRED? ☐ YES ☒ NO *If yes, indicate year of last diving inspection* 91

SPECIAL EMPHASIS INSPECTION REQUIRED: ☐ YES ☒ NO  
If yes, indicate type below.

### Spans

NON-REDUNDANT/FRACTURE CRITICAL

## PIN AND HANGERS

FATIGUE-PRONE WELDS(AASHTO D, E OR E')

### NON-CATEGORIZED FATIGUE-PRONE DETAILS

OTHERS (SPECIFY)

RECOMMEND FURTHER

INVESTIGATION ☐ 1 = NO  
2 = YES

**Field Notes:**

REMARKS

Date	Time of Arrival	Time of Departure	Temp (C)	Weather Conditions
10/8/12	2:00	3:00	44°F	Ptly Cloudy, rain in AM
10/10/12	7:30	4:30	43°F	Sunny
10/11/12	7:30	4:30	46°F	Ptly Cloudy
10/12/12	7:30	4:00	46°F	Light rain AM, Ptly cloudy PM
10/15/12	7:30	3:00	60°F	Mostly sunny
11/5/12	7:30	4:30	35°F	Rain in AM, Ptly Cloudy PM
11/6/12	7:30	4:30	35°F	Clear
11/8/12	7:30	3:30	36°F	Clear

BIN 2211290

**NYS DEPT. OF TRANSPORTATION  
BRIDGE INSPECTION REPORT  
SHEET 3 OF 15**

**TEAM****ASST. TEAM**
**LEADER:** Timothy Howland **LEADER:** Robert Fleming **DATE** 11 / 8 / 12
**Feature Carried:** Pont de Rennes
**Feature Crossed:** Genesee River
**Remarks**

TP350-19 Wearing Surface
The deck exhibits longitudinal cracking, many of which have been previously routed and sealed. The gray concrete infill along the center of the bridge which covers the buried electrical conduit exhibits numerous spalls. (See Photo 1)
TP349-22,23 Joint with Deck
The begin joint is rated a 3 due to failure of the joint material and debris build-up within the joint. The joint material has separated from the edge of deck at the joint. (See Photo 2) The end joint is rated a 4 as it is beginning to separate from the deck.
TP349-24,25 Bearings, anchor bolts, pads
The begin bearings are rated 4. The left begin bearing remains frozen as noted in the previous inspection. This has led to local buckling of the bottom chord web at the bearing. There is also corrosion to the bearing and section loss to the strut between the left and right bearings. (See Photos 3, 4, 5) The end bearings are rated a 5 but also suffer from corrosion and deterioration of the strut between the left and right bearings. (See Photos 6)
TP349-27 Bridge Seat and Pedestals
Debris build-up on end bridge seat contributing to the deterioration of the horizontal strut between bearings.
TP349-55 Settlement
The pavers at the begin approach have settled several inches around the electrical box. This creates a low spot at the box and a tripping hazard. (See Photo 8)
The asphalt walkway immediately to the south side of the end approach has settled and sloughed. This creates an uneven walking surface and a tripping hazard. (See Photo 9)
TP 350 - 28 Primary Members
Span 1: Primary members are rated a 4 due to pack rust, section loss and holes in members.
• Left truss between U10 and U9 – Corrosion and section loss in top chord, stay plate and previous repair plate.
• Left truss between U10 and U9 – Bent lacing bars in top chord.
• Left truss between U6 and U5, at U5 – Holes in fascia stringer web, hole in flange and section loss in floorbeam connection angle.
• Left truss between U2 and U1, at U2 – Holes in fascia stringer web, hole in flange and section loss in floorbeam connection angle.
• Left truss bottom chord splice between L2 and L1 – Pack rust in angle and web splice plates.
• Left truss between U2 and U1 – Deteriorated top chord lacing bars with holes.
• Left truss between U2 and U1 – Severe section loss in fascia beam top flange angles. This is worst condition but condition exists in most spans. (See Photo 10)
• Right truss bottom chord splice between L10 and L9 – Pack rust in web splice plates.
• Right truss between U10 and U9 – Pack rust in top chord stay plate and deformation in top chord angle.
• Right truss between U10 and U9 – Pack rust in top chord stay plate and stay plate has come loose due to failed welds. (See Photo 11)
• Right truss U6 to L8, at L8 – Pack rust in angles of truss diagonal. Typical at every diagonal location. (See Photo 12)
• Right truss between U7 and U6 – Section loss in top chord cover plate.
• Right truss between L10 and L9 – Pack rust in previously repaired bottom chord splice angle.
• Right truss between U6 and U5, at U5 – Hole in fascia beam web and flange angle section loss.
• Right truss between U5 and U4 – Holes in fascia beam web.
• Right truss between U4 and U3, at U4 – Hole in fascia beam web and flange angle section loss with hole.
• Right truss at U3 – Small hole in floorbeam web near fascia stringer connection.

BIN 2211290

**NYS DEPT. OF TRANSPORTATION  
BRIDGE INSPECTION REPORT  
SHEET 4 OF 15**

**TEAM****ASST. TEAM**
**LEADER:** Timothy Howland **LEADER:** Robert Fleming **DATE** 11 / 8 / 12
**Feature Carried:** Pont de Rennes
**Feature Crossed:** Genesee River
**Remarks**

• Right truss between U4 and U3, at U3 – Hole in fascia beam web and flange angle section loss with hole.
• Right truss between U3 and U2, at U3 – Severe section loss and hole in fascia beam web. Also section loss and holes in flange angle.
• Right truss between U3 and U2, at U2 – Severe section loss and hole in fascia beam web. Also section loss and holes in flange angle.
• Right truss between U2 and U1, at U2 – Severe section loss and holes in fascia beam web. (See Photo 13)
• Between U1 right truss and U1 left truss – Typical corrosion in stringers at floorbeam connection. (See Photo 14)
• Floorbeam at U0 – Severe section loss in backside flange angle of floorbeam. (See Photo 15)
• Right truss between U2 and U1, at U1 – Hole in fascia beam web.
• Right truss between U1 and U0, at U1 – Hole in fascia beam web.
• Right truss at U0 – Section loss and hole in stringer web near right truss. Section loss and deterioration present in other stringers. (See Photo 16)
• Right truss at U0 – Section loss and corrosion in fascia stringer flange angles and corrosion on adjacent stringer. (See Photo 17)
Span 2: Primary members are rated a 4 due to section loss in stringer, bowed fascia beams and section loss in fascia beam to floorbeam connection.
• Right truss – Bowed fascia beam. Typical at both fascias. (See Photo 18)
• Right truss at U0 – Severe section loss and holes in fascia stringer bottom flange. (See Photo 19)
Span 3: Primary members are rated a 4 due to pack rust, section loss and holes in members.
• Left truss between U10 and U9 – Pack rust in stay plate and previous top chord repair plate.
• Left truss between U9 and U8, at U8 – Hole in fascia beam web.
• Left truss at L4 – General corrosion and minor section loss in bottom chord flange angles and web plates.
• Left truss at L3 – General corrosion in bottom chord and two deformations in the flange angles.
• Left truss between L2 and L1 – Corrosion in previously repaired bottom chord flange splice. Web splice plates also exhibit deformations due to pack rust.
• Left truss at U3 to L2 – Corrosion and minor section loss in diagonal truss member angle.
• Left truss at L0 – Pack rust in plates at bearing and column connection.
• Left truss at U1 to L0, at U1 – Pack rust in diagonal angle members. Typical in most spans.
• Left truss between U1 and U0 – Pack rust in stay plate and previous top chord repair plate. (See Photo 20)
• Left truss at U0 – Holes and section loss in top chord lacing bars.
• Right truss between U10 and U9, at U10 – Hole in fascia beam web.
• Right truss between L10 and L9 – Pack rust in bottom chord flange splice and web splice plates.
• Right truss between U8 and L10 – Holes in four lacing bars of the truss diagonal. (See Photo 21)
• Right truss between U10 and U9, at U9 – Hole in fascia beam web. (See Photo 22)
• Right truss between U9 and U8, at U9 – Hole in fascia beam web and section loss in connection angle to floorbeam. (See Photo 22)
• Right truss between U6 and L5 – Truss diagonal angles are slightly out of plane.
• Right truss between U5 and U4, at U4 – Hole in fascia beam web and section loss in flange angles.
• Right truss between U1 and U0 – Small hole in interior top chord web plate.
Span 5: Primary members are rated a 4 due to pack rust, section loss and holes in members.
• Left truss between U10 and U9 – Pack rust in top chord stay plate and section loss to top chord web plates.
• Left truss between L8 and L7, at L7 – Cracked and bent bottom chord splice/stay plate. (See Photo 23)
• Left truss between U10 and U9 – Pack rust in top chord stay plate and section loss to top chord web plates.
• Left truss at intersection of U7 to L6 and U6 to L8 – Corrosion in HSS member and connection plate used to stiffen previously buckled truss diagonal.
• Left truss between U4 and L6 – Truss diagonal angles are slightly out of plane.
• Left truss between L4 and L3 – Pack rust in bottom chord flange splice plate.

BIN 2211290

**NYS DEPT. OF TRANSPORTATION  
BRIDGE INSPECTION REPORT  
SHEET 5 OF 15**

**TEAM****ASST. TEAM**
**LEADER:** Timothy Howland **LEADER:** Robert Fleming **DATE** 11 / 8 / 12
**Feature Carried:** Pont de Rennes
**Feature Crossed:** Genesee River
**Remarks**

- |   |
|---|
| • Left truss between L4 and L3 – Deformation in bottom chord flange angle.                                      |
| • Left truss between L2 and L1 – Pack rust in bottom chord flange splice and web splice plates.                 |
| • Left truss between U3 and U2, at U2 – Hole in fascia beam web.  |
| • Left truss between U2 and U1, at U2 – Hole in fascia beam web.  |
| • Left truss between U1 and U0, at U0 – Tear in fascia beam web.  |
| • Right truss between U10 and U9, at U0 – Pack rust in top chord stay plate.                                    |
| • Right truss between L10 and L9 – Pack rust in bottom chord flange splice plate.                               |
| • Right truss between L8 and L7 – Pack rust in bottom chord flange splice plate.                                |
| • Right truss between L6 and L5 – Pack rust in bottom chord flange splice plate.                                |
| • Right truss between U6 and U5 – Section loss in top chord stay plate and fascia beam.                         |
| • Right truss between L4 and L3 – Section loss in bottom chord splice plate.                                    |
| • Right truss between L2 and L1 – Pack rust in bottom chord flange splice and web splice plates.                |
| • Right truss between U1 and U0 – Pack rust in stay plate and previous top chord repair plate.                  |
| • Right truss end post, near U0 – Hole in stay plate.   |
| Span 7: Primary members are rated a 4 due to pack rust, section loss and holes in members.                      |
| • Left truss between U8 and U7 – Hole and section loss in fascia beam web.                                      |
| • Left truss between U7 and L6 – Section loss in truss diagonal angles.   |
| • Left truss between L6 and L5 – Pack rust in bottom chord flange splice plate.                                 |
| • Left truss between L4 and L3 – Pack rust in bottom chord flange splice plate.                                 |
| • Left truss between U4 and L3 – Section loss in truss diagonal angles.   |
| • Left truss between U5 and U4, at U4 – Hole and section loss in fascia beam web.                               |
| • Left truss between U4 and U3, at U4 – Hole and section loss in fascia beam web.                               |
| • Left truss at U2 – Small hole in floorbeam web near fascia stringer connection.                               |
| • Left truss between L2 and L1 – Pack rust in bottom chord flange splice plate.                                 |
| • Left truss between U3 and U2, at U2 – Hole and section loss in fascia beam web.                               |
| • Left truss between U2 and U1, at U2 – Hole and section loss in fascia beam web.                               |
| • Left truss between U1 and U0 – Pack rust in top chord stay plate.   |
| • Right truss between U10 and U9 – Pack rust in top chord stay plate and previous top chord repair plates.      |
| • Right truss between U10 and U9, at U10 – Hole in fascia beam web and hole in flange angle.                    |
| • Right truss between L10 and L9 – Pack rust in bottom chord flange splice plate.                               |
| • Right truss between U10 and U9, at U9 – Hole in fascia beam web and hole in floorbeam top flange.             |
| • Right truss between U9 and U8, at U9 – Hole in fascia beam web and hole in floorbeam top flange.              |
| • Right truss at L8 – Section loss in bottom chord side plate.  |
| • Right truss between U6 and U5, at U5 – Hole in fascia beam web and top chord corrosion.                       |
| • Right truss between U5 and U4, at U5 – Hole in fascia beam web and flange section loss. Top chord corrosion.  |
| • Right truss between L4 and L3, at L4 – Pack rust in bottom chord flange splice plate.                         |
| • Right truss diagonal between L5 and U3, at L5 – Outside angle deformed and buckled. (See Photos 24, 25)       |
| • Right truss between U5 and U4, at U4 – Hole in fascia beam web.   |
| • Right truss between U4 and U3, at U4 – Hole in fascia beam web.   |
| • Right truss at U3 – Approximately 6"x1" hole in floorbeam web near fascia stringer connection. (See Photo 26) |
| • Right truss between L2 and L1 – Pack rust in bottom chord flange and web splice plates.                       |
| • Right truss between U1 and U0 – Pack rust in top chord stay plate and previous top chord repair plates.       |
| • Right truss at U0 – Small hole in stay plate beneath floorbeam and hole in top chord lacing bar.              |

BIN 2211290

**NYS DEPT. OF TRANSPORTATION  
BRIDGE INSPECTION REPORT  
SHEET 6 OF 15**

**TEAM****ASST. TEAM**
**LEADER:** Timothy Howland **LEADER:** Robert Fleming **DATE** 11 / 8 / 12
**Feature Carried:** Pont de Rennes
**Feature Crossed:** Genesee River
**Remarks**

Span 9: Primary members are rated a 4 due to pack rust, section loss and holes in members.
• Member between L9 Right Truss and L9 Left Truss at bearings– Significant section loss in strut angles with holes and up 50% section loss. (See Photo 27)
• Left truss diagonal between U8 and L7, near U8 –Section loss in interior angles. Small portion of angle leg separated from angle. ( See Photo 28)
• Left truss at U8 – Holes and corrosion in main members of deck grating system. (See Photo 29, 30)
• Left truss diagonal between U8 and U7 – Interior bottom flange angle of fascia beam deformed.
• Left truss at U8 – Hole in fascia beam web and electrical conduit separated exposing the cable. (See Photo 31)
• Left truss between U7 and U6, at U6 – Hole and section loss in fascia beam web.
• Left truss between U6 and U5, at U6 – Hole and section loss in fascia beam web.
• Left truss between U5 and U4, at U5 – Hole and section loss in fascia beam web.
• Left truss between L4 and L3 – Pack rust in bottom chord flange splice plate.
• Right truss at U8 – Missing rivet in stringer to floorbeam connection. Electrical conduit separated exposing the cable.
• Right truss between U8 and U7 – Minor section loss and pitting in top chord web plates.
• Right truss between L8 and L7 – Pack rust in bottom chord flange splice. (See Photo 32)
• Right truss at U6 – Small hole in floorbeam web near fascia stringer connections.
• Right truss at L6 – Pack rust in bottom chord web plates.
• Right truss between U6 and U5 – Hole in fascia beam web.
• Right truss between L5 and L4 – Pack rust in bottom chord flange splice.
• Right truss diagonal between L5 and U3 – Previous diagonal was buckled and braced with HSS tube. The HSS tube has corrosion and section loss. (See Photos 33, 34)
• Right truss diagonal between L4 and U2 –Angles are slightly buckled. (See Photos 35, 36)
• Right truss between L3 and L2 – Pack rust in bottom chord flange splice.
• Right truss at L3 – Pack rust in bottom chord web plates.
• Right truss between U3 and U2, at U2 – Hole in fascia beam web and hole in floorbeam top flange.
• Right truss at U0 –Small hole in stay plate beneath floorbeam and hole in top chord lacing bar.
TP 350 - 29 Secondary Members
Secondary members are rated a 3 due to the conditions below:
Span 1
• Right truss top lateral bracing at U0 East - Significant pack rust at eyebar forging
• Right truss top lateral bracing at U1 West - Significant pack rust at eyebar forging causing deflection in upper plate of eyebar connection
• Right truss top lateral bracing at U1 East - Pack rust at eyebar forging, corrosion and section loss in upper and lower plate of eyebar connection
• Right truss top lateral bracing at U2 West - Significant pack rust at eyebar forging
• Right truss top lateral bracing at U2 East - Pack rust at eyebar forging, corrosion and section loss in upper and lower plate of eyebar connection
• Right truss top sway bar connection at U3 - Heavy corrosion and section loss on sway bar to floorbeam connection plate (See Photo 37)
• Right truss top lateral bracing at U3 West - Eyebar partially cracked at forging



BIN 2211290

**NYS DEPT. OF TRANSPORTATION  
BRIDGE INSPECTION REPORT  
SHEET 7 OF 15**

**TEAM****ASST. TEAM**
**LEADER:** Timothy Howland **LEADER:** Robert Fleming **DATE** 11 / 8 / 12
**Feature Carried:** Pont De Rennes
**Feature Crossed:** Genesee River
**Remarks**

• Right truss top lateral bracing at U3 East - Eyebar cracked at forging
• Right truss top lateral bracing at U4 West - Eyebar cracked at forging
• Right truss top lateral bracing at U4 East - Significant pack rust at eyebar forging
• Right truss top lateral bracing at U5 West - Significant pack rust at eyebar forging
• Right truss top lateral bracing at U5 East - Pack rust at eyebar forging, corrosion and deflection in top and bottom eyebar connection plate, corrosion on repair at previous eyebar forging repair
• Right truss top lateral bracing at U6 West – Eyebar cracked at forging
• Right truss top lateral bracing at U6 East - Eyebar partially cracked at forging
• Right truss top lateral bracing at U7 East – Eyebar partially cracked at forging
• Right truss top lateral bracing at U8 West – Significant pack rust at eyebar forging
• Right truss top lateral bracing at U8 East – Significant pack rust at eyebar forging, section loss and deflection in bottom plate of eyebar connection
• Right truss top lateral bracing at U9 East – Significant pack rust at eyebar forging, pack rust has caused deflection in top and bottom plates of eyebar connection
• Right truss top lateral bracing at U9 West – Significant pack rust at eyebar forging, pack rust has caused deflection in top plate of eyebar connection
• Right truss top lateral bracing at U10 West – Significant pack rust at eyebar forging, section loss and deflection in top plate of eyebar connection
• Right truss bottom lateral bracing at L2 West – Significant pack rust at eyebar forging
• Right truss bottom lateral bracing at L2 East – Significant pack rust at eyebar forging
• Right truss bottom sway bar connection at L2 – Corrosion and section loss on sway bar to bottom chord lateral strut connection plate
• Right truss bottom lateral bracing at L5 East – Significant pack rust at eyebar forging
• Right truss bottom lateral bracing at L6 East – Eyebar cracked at forging
• Right truss bottom lateral bracing at L7 East – Significant pack rust at eyebar forging
• Right truss bottom sway bar connection at L7 – Corrosion and section loss on sway bar to bottom chord lateral strut connection plate
• Right truss bottom lateral bracing at L8 West – Eyebar partially cracked at forging
• Right truss bottom lateral bracing at L8 East – Significant pack rust at eyebar forging
• Right truss bottom lateral bracing at L9 East – Significant pack rust at eyebar forging
• Right truss bottom lateral bracing at L10 East – Significant pack rust at eyebar forging, section loss in top and bottom plate of eyebar connection
• Left truss top lateral bracing at U1 East – Significant pack rust at eyebar forging
• Left truss top lateral bracing at U2 West – Significant pack rust at eyebar forging, deflection in top plate of eyebar connection due to pack rust
• Left truss top lateral bracing at U2 East – Significant pack rust at eyebar forging, deflection and section loss in top and bottom plate of eyebar connection
• Left truss top lateral bracing at U3 West - Significant pack rust at eyebar forging, deflection in top and bottom plates of eyebar connection due to pack rust
• Left truss top lateral bracing at U3 East – Eyebar partially cracked at forging
• Left truss top lateral bracing at U4 West – Eyebar cracked at forging
• Left truss top lateral bracing at U4 East – Significant pack rust at eyebar forging, deflection and section loss in bottom plate of eyebar connection
• Left truss top lateral bracing at U5 West – Significant pack rust at eyebar forging
• Left truss top lateral bracing at U5 East – Pack rust in top plate of eyebar connection, section loss and corrosion on bottom plate of eyebar connection
• Left truss top lateral bracing at U6 West – Eyebar partially cracked at forged eye

BIN 2211290

**NYS DEPT. OF TRANSPORTATION  
BRIDGE INSPECTION REPORT  
SHEET 8 OF 15**

**TEAM****ASST. TEAM**LEADER: Timothy Howland LEADER: Robert Fleming DATE 11 / 8 / 12*Feature Carried:* Pont De Rennes*Feature Crossed:* Genesee River**Remarks**

• Left truss top lateral bracing at U6 East – Eyebar partially cracked at forged eye
• Left truss top lateral bracing at U7 West – Significant pack rust at eyebar forging, deflection and section loss in bottom plate of eyebar connection
• Left truss top lateral bracing at U7 East – Significant pack rust at eyebar forging
• Left truss top lateral bracing at U8 West – Significant pack rust at eyebar forging
• Left truss top lateral bracing at U8 East – Significant pack rust at eyebar forging, section loss and deflection in top and bottom plates of eyebar connection
• Left truss top lateral bracing at U9 East – Significant pack rust at eyebar forging, severe section loss and deflection in top plate of eyebar connection
• Left truss top lateral bracing at U9 West – Significant pack rust at eyebar forging, section loss and deflection in top and bottom plates of eyebar connection
• Left truss top lateral bracing at U10 West – Significant pack rust at eyebar forging
• Left truss bottom lateral bracing at L0 West– Significant pack rust at eyebar forging
• Left truss bottom lateral bracing at L2 East – Significant pack rust at eyebar forging
• Left truss bottom lateral bracing at L2 West – Significant pack rust at eyebar forging
• Left truss bottom sway bar connection at L2 – Heavy corrosion on sway bar to plate connection
• Left truss bottom lateral bracing at L3 West – Significant pack rust at eyebar forging
• Left truss bottom sway bar connection at L3 – Heavy corrosion on sway bar to plate connection
• Left truss bottom lateral bracing at L4 West – Significant pack rust at eyebar forging
• Left truss bottom lateral bracing at L4 East – Significant pack rust at eyebar forging
• Left truss bottom lateral bracing at L5 West – Significant pack rust at eyebar forging, section loss in top and bottom plate of eyebar connection
• Left truss bottom lateral bracing at L5 East – Significant pack rust at eyebar forging
• Left truss bottom sway bar connection at L5 – Heavy corrosion on sway bar to plate connection
• Left truss bottom lateral bracing at L6 West – Significant pack rust at eyebar forging
• Left truss bottom lateral bracing at L6 East – Significant pack rust at eyebar forging
• Left truss bottom lateral bracing at L7 West – Significant pack rust at eyebar forging, section loss in top and bottom plate of eyebar connection
• Left truss bottom lateral bracing at L7 East – Significant pack rust at eyebar forging
• Left truss bottom sway bar connection at L7 – Heavy corrosion on sway bar to plate connection
• Left truss bottom lateral bracing at L8 West – Significant pack rust at eyebar forging
• Left truss bottom lateral bracing at L8 East – Significant pack rust at eyebar forging, section loss in top and bottom plate of eyebar connection
• Left truss bottom lateral bracing at L9 East – Significant pack rust at eyebar forging
• Left truss bottom lateral bracing at L9 West – Significant pack rust at eyebar forging, section loss in top and bottom plate of eyebar connection
• Left truss bottom sway bar connection at L9 – Heavy corrosion on sway bar to plate connection
• Left truss bottom lateral bracing at L10 West – Significant pack rust at eyebar forging
• Left truss bottom lateral bracing at L10 East – Significant pack rust at eyebar forging, section loss in top and bottom plate of eyebar connection
• Left truss bottom lateral bracing at L11 West – Eyebar partially cracked at forged eye

BIN 2211290

**NYS DEPT. OF TRANSPORTATION  
BRIDGE INSPECTION REPORT  
SHEET 9 OF 15**

**TEAM****ASST. TEAM**
**LEADER:** Timothy Howland **LEADER:** Robert Fleming **DATE** 11 / 8 / 12
**Feature Carried:** Pont De Rennes
**Feature Crossed:** Genesee River
**Remarks**

Span 3
• Right truss top lateral bracing at U0 East - Significant pack rust at eyebar forging, section loss in top plate of eyebar connection
• Right truss top sway bar connection at U1 – Heavy corrosion on sway bar to plate connection
• Right truss top lateral bracing at U1 West - Significant pack rust at eyebar forging, deflection in top plate of eyebar connection due to pack rust
• Right truss top lateral bracing at U1 East – Significant pack rust at eyebar forging, deflection in upper and lower plate of eyebar connection
• Right truss top lateral bracing at U2 East – Eyebar cracked at forging
• Right truss top sway bar connection at U3 – Heavy corrosion on sway bar to plate connection
• Right truss top lateral bracing at U3 East – Section loss and deflection in top and bottom plates of eyebar connection
• Right truss top lateral bracing at U5 West – Eyebar partially cracked at forging
• Right truss top lateral bracing at U5 East – Eyebar partially cracked at forging
• Right truss top lateral bracing at U6 West – Eyebar partially cracked at forging
• Right truss top lateral bracing at U6 East – Eyebar cracked at forging, corrosion and section loss in top and bottom plates of eyebar connection (See Photo 38)
• Right truss top lateral bracing at U7 West – Significant pack rust at eyebar forging,
• Right truss top lateral bracing at U7 East - Significant pack rust at eyebar forging, section loss in top and bottom plate of eyebar connection
• Right truss top lateral bracing at U8 West – Section loss in top and bottom plate of eyebar connection
• Right truss top lateral bracing at U9 East - Significant pack rust at eyebar forging, section loss and deflection in top and bottom plate of eyebar connection
• Right truss top lateral bracing at U9 West - Significant pack rust at eyebar forging, deflection in top plate of eyebar connection
• Right truss bottom lateral bracing at L0 East - Significant pack rust at eyebar forging
• Right truss bottom lateral bracing at L2 West – Eyebar partially cracked at forging
• Right truss bottom lateral bracing at L3 West - Significant pack rust at eyebar forging, section loss in top and bottom plate of eyebar connection
• Right truss bottom lateral bracing at L3 East - Significant pack rust at eyebar forging, section loss in top plate of eyebar connection
• Right truss bottom sway bar connection at L4 – Pack rust and section loss in sway bar connection plate at bottom strut
• Right truss bottom lateral bracing at L5 East – Eyebar partially cracked at forging
• Right truss bottom sway bar connection at L5 – Heavy corrosion on sway bar to plate connection
• Right truss bottom lateral bracing at L6 West - Significant pack rust at eyebar forging
• Right truss bottom lateral bracing at L6 East - Significant pack rust at eyebar forging, section loss in top and bottom plate of eyebar connection
• Right truss bottom sway bar connection at L7 – Heavy corrosion on sway bar to plate connection
• Right truss bottom lateral bracing at L10 East - Significant pack rust at eyebar forging
• Left truss top lateral bracing at U0 East - Significant pack rust at eyebar forging
• Left truss top lateral bracing at U1 West - Significant pack rust at eyebar forging
• Left truss top lateral bracing at U1 East – Eyebar partially cracked at forging
• Left truss top lateral bracing at U2 West - Significant pack rust at eyebar forging
• Left truss top lateral bracing at U2 East - Eyebar cracked at forging, section loss in top and bottom plate of eyebar connection
• Left truss top lateral bracing at U4 East - Eyebar partially cracked at forging
• Left truss top lateral bracing at U5 West - Significant pack rust at eyebar forging
• Left truss top lateral bracing at U5 East - Eyebar partially cracked at forging
• Left truss top lateral bracing at U6 West - Significant pack rust at eyebar forging
• Left truss top lateral bracing at U6 East - Eyebar cracked at forging, section loss in top and bottom plate of eyebar connection
• Left truss top lateral bracing at U7 West - Significant pack rust at eyebar forging, deflection in bottom plate of eyebar connection
• Left truss top lateral bracing at U8 West - Significant pack rust at eyebar forging
• Left truss top lateral bracing at U8 East - Significant pack rust at eyebar forging, section loss and deflection in top plate of eyebar connection

BIN 2211290

**NYS DEPT. OF TRANSPORTATION  
BRIDGE INSPECTION REPORT  
SHEET 10 OF 15**

**TEAM****ASST. TEAM**
**LEADER:** Timothy Howland **LEADER:** Robert Fleming **DATE** 11 / 8 / 12
**Feature Carried:** Pont De Rennes
**Feature Crossed:** Genesee River
**Remarks**

• Left truss top lateral bracing at U9 East - Significant pack rust at eyebar forging, section loss and deflection in top plate of eyebar conn.
• Left truss top lateral bracing at U9 West - Significant pack rust at eyebar forging, section loss and deflection in top plate of eyebar conn.
• Left truss top lateral bracing at U10 West - Significant pack rust at eyebar forging, section loss in top and bottom plate of eyebar connection
• Left truss bottom lateral bracing at L1 West – significant pack rust at eyebar forging
• Left truss bottom lateral bracing at L1 East – significant pack rust at eyebar forging
• Left truss bottom lateral bracing at L2 West – significant pack rust at eyebar forging
• Left truss bottom lateral bracing at L2 East – significant pack rust at eyebar forging
• Left truss bottom sway bar connection at L2 – heavy corrosion on sway bar to strut connection
• Left truss bottom lateral bracing at L3 West – significant pack rust at eyebar forging
• Left truss bottom lateral bracing at L3 East - Significant pack rust at eyebar forging, section loss in top and bottom plate of eyebar connection
• Left truss bottom sway bar connection at L4 – Heavy corrosion on sway bar to strut connection
• Left truss bottom lateral bracing at L5 West – Significant pack rust at eyebar forging
• Left truss bottom sway bar connection at L2 – Heavy corrosion and section loss on sway bar to strut connection
• Left truss bottom lateral bracing at L8 East - Significant pack rust at eyebar forging, section loss in top and bottom plate of eyebar conn.
• Left truss bottom lateral bracing at L9 East - Significant pack rust at eyebar forging, section loss in top and bottom plate of eyebar connection
• Left truss bottom lateral bracing at L9 West – Significant pack rust at eyebar forging
• Left truss bottom lateral bracing at L10 East – Significant pack rust at eyebar forging
• Left truss bottom lateral bracing at L11 West - Significant pack rust at eyebar forging, section loss in top and bottom plate of eyebar connection
Span 5
• Right truss top lateral bracing at U0 East – Significant pack rust at eyebar forging
• Right truss top lateral bracing at U1 West - Significant pack rust at eyebar forging, deflection in top and bottom plate of eyebar connection
• Right truss top lateral bracing at U1 East – Eyebar partially cracked at forging
• Right truss top lateral bracing at U4 West – Eyebar partially cracked at forging
• Right truss top lateral bracing at U4 East – Eyebar cracked at forging
• Right truss top lateral bracing at U5 East – Eyebar partially cracked at forging
• Right truss top lateral bracing at U6 West – Significant pack rust at eyebar forging, section loss and deflection in bottom plate of eyebar connection
• Right truss top lateral bracing at U7 West – Significant pack rust at eyebar forging, section loss and deflection in top and bottom plate of eyebar connection
• Right truss top lateral bracing at U7 East – Significant pack rust at eyebar forging
• Right truss top lateral bracing at U8 West – Eyebar partially cracked at forging
• Right truss top lateral bracing at U8 East – Significant pack rust at eyebar forging, section loss and deflection in top plate of eyebar connection
• Right truss top lateral bracing at U9 East – Significant pack rust at eyebar forging, section loss and deflection in top and bottom plate of eyebar connection
• Right truss top lateral bracing at U9 West – Significant pack rust at eyebar forging
• Right truss top lateral bracing at U10 West – Significant pack rust at eyebar forging
• Right truss bottom lateral bracing at L1 West - Significant pack rust at eyebar forging
• Right truss bottom lateral bracing at L1 East - Significant pack rust at eyebar forging, deflection in bottom plate of eyebar connection
• Right truss bottom lateral bracing at L2 West - Significant pack rust at eyebar forging
• Right truss bottom lateral bracing at L2 East - Significant pack rust at eyebar forging, section loss and deflection in top and bottom plate of eyebar connection

BIN 2211290

**NYS DEPT. OF TRANSPORTATION  
BRIDGE INSPECTION REPORT  
SHEET 11 OF 15**

**TEAM****ASST. TEAM**
**LEADER:** Timothy Howland **LEADER:** Robert Fleming **DATE** 11 / 8 / 12
**Feature Carried:** Pont De Rennes
**Feature Crossed:** Genesee River
**Remarks**

- |  |
|--|
| • Right truss bottom lateral bracing at L3 West - Significant pack rust at eyebar forging, section loss and deflection in top and bottom plate of eyebar connection                        |
| • Right truss bottom lateral bracing at L3 East - Significant pack rust at eyebar forging  |
| • Right truss bottom lateral bracing at L5 West - Significant pack rust at eyebar forging  |
| • Right truss bottom sway bar connection at L5 - Heavy corrosion on sway bar to strut connection   |
| • Right truss bottom sway bar connection at L6 - Heavy corrosion on sway bar to strut connection   |
| • Right truss bottom lateral bracing at L10 East - Significant pack rust at eyebar forging, deflection in top and bottom plate of eyebar connection  |
| • Right truss bottom lateral bracing at L10 West - Significant pack rust at eyebar forging, deflection in top and bottom plate of eyebar connection  |
| • Right truss bottom lateral bracing at L11 West - Significant pack rust at eyebar forging, deflection in top and bottom plate of eyebar connection  |
| • Left truss top lateral bracing at U0 East - Significant pack rust at eyebar forging  |
| • Left truss top lateral bracing at U1 West - Significant pack rust at eyebar forging  |
| • Left truss top lateral bracing at U1 East - Significant pack rust at eyebar forging  |
| • Left truss top lateral bracing at U2 West - Significant pack rust at eyebar forging  |
| • Left truss top lateral bracing at U2 East - Significant pack rust at eyebar forging, section loss and deflection in bottom plate of eyebar connection                                    |
| • Left truss top lateral bracing at U3 East – Eyebar partially cracked at forging  |
| • Left truss top lateral bracing at U4 West – Eyebar partially cracked at forging  |
| • Left truss top lateral bracing at U4 East - Significant pack rust at eyebar forging  |
| • Left truss top lateral bracing at U6 West - Significant pack rust at eyebar forging  |
| • Left truss top lateral bracing at U7 East - Significant pack rust at eyebar forging, section loss and deflection in top and bottom plate of eyebar connection                            |
| • Left truss top lateral bracing at U8 East - Significant pack rust at eyebar forging, deflection in top and bottom plate of eyebar connection   |
| • Left truss top lateral bracing at U9 West - Significant pack rust at eyebar forging, deflection in top and bottom plate of eyebar connection   |
| • Left truss top lateral bracing at U9 East - Significant pack rust at eyebar forging, deflection in top and bottom plate of eyebar connection   |
| • Left truss top lateral bracing at U10 West - Significant pack rust at eyebar forging   |
| • Left truss bottom lateral bracing at L1 West - Significant pack rust at eyebar forging   |
| • Left truss bottom lateral bracing at L2 West - Significant pack rust at eyebar forging   |
| • Left truss bottom lateral bracing at L2 East - Significant pack rust at eyebar forging, section loss and deflection in bottom plate of eyebar connection                                 |
| • Left truss bottom sway bar connection at L2 – Pack rust and section loss in sway bar connection plate at strut   |
| • Left truss bottom lateral bracing at L3 East – Section loss and deflection in top and bottom plate of eyebar connection  |
| • Left truss bottom lateral bracing at L4 West – Eyebar partially cracked at forging   |
| • Left truss bottom lateral bracing at L4 East – Eyebar partially cracked at forging, heavy pack rust at forging, section loss and deflection in bottom and top plate of eyebar connection |
| • Left truss top lateral bracing at L5 West - Significant pack rust at eyebar forging, deflection in top and bottom plate of eyebar connection   |
| • Left truss top lateral bracing at L5 East - Significant pack rust at eyebar forging, deflection in top and bottom plate of eyebar connection   |
| • Left truss top lateral bracing at L6 East - Significant pack rust at eyebar forging, corrosion on top and bottom plate of eyebar connection  |
| • Left truss bottom lateral bracing at L7 West - Significant pack rust at eyebar forging   |
| • Left truss bottom lateral bracing at L9 West - Significant pack rust at eyebar forging   |
| • Left truss bottom lateral bracing at L10 East- Significant pack rust at eyebar forging   |
| • Left truss bottom lateral bracing at L11 West - Significant pack rust at eyebar forging  |

BIN 2211290

**NYS DEPT. OF TRANSPORTATION  
BRIDGE INSPECTION REPORT  
SHEET 12 OF 15**

**TEAM****ASST. TEAM**
**LEADER:** Timothy Howland **LEADER:** Robert Fleming **DATE** 11 / 8 / 12
**Feature Carried:** Pont De Rennes
**Feature Crossed:** Genesee River
**Remarks**

Span 7
• Right truss top lateral bracing at U0 East - Significant pack rust at eyebar forging
• Right truss top lateral bracing at U1 West - Significant pack rust at eyebar forging
• Right truss top lateral bracing at U2 East – Eyebar partially cracked at forging, section loss in top and bottom plate of eyebar connection
• Right truss top lateral bracing at U3 West – Eyebar partially cracked at forging
• Right truss top lateral bracing at U3 East – Heavy section loss and deflection in top and bottom plate of eyebar connection
• Right truss top lateral bracing at U4 West - Significant pack rust at eyebar forging
• Right truss top lateral bracing at U5 West - Significant pack rust at eyebar forging
• Right truss top lateral bracing at U5 East – Significant pack rust at eyebar forging, section loss in top and bottom plate of eyebar conn.
• Right truss top lateral bracing at U6 West – Significant pack rust at eyebar forging, deflection of top and bottom plate of eyebar conn.
• Right truss top lateral bracing at U6 East – Eyebar partially cracked at forging
• Right truss top lateral bracing at U7 West – Eyebar partially cracked at forging
• Right truss top lateral bracing at U7 East – Eyebar partially cracked at forging (See Photo 39)
• Right truss top lateral bracing at U8 West – Eyebar partially cracked at forging
• Right truss top lateral bracing at U9 East – Significant pack rust at eyebar forging, deflection in top and bottom plate of eyebar connection
• Right truss top lateral bracing at U9 West - Significant pack rust at eyebar forging
• Right truss top lateral bracing at U10 West - Significant pack rust at eyebar forging
• Right truss bottom sway bar connection at L2 – Pack rust and section loss on sway bar connection plate at strut
• Right truss bottom lateral bracing at L4 West – Eyebar partially cracked at forging
• Right truss bottom lateral bracing at L6 West - Significant pack rust at eyebar forging
• Right truss bottom lateral bracing at L6 East - Significant pack rust at eyebar forging
• Right truss bottom sway bar connection at L7 – Pack rust and section loss on sway bar connection plate at strut
• Right truss bottom lateral bracing at L8 East – Significant pack rust at eyebar forging, deflection in top and bottom plate of eyebar conn.
• Right truss bottom lateral bracing at L9 East - Significant pack rust at eyebar forging
• Right truss bottom lateral bracing at L9 West – Significant pack rust at eyebar forging, deflection in top and bottom plate of eyebar connection
• Right truss bottom lateral bracing at L10 East – Significant pack rust at eyebar forging
• Left truss top lateral bracing at U0 East - Significant pack rust at eyebar forging
• Left truss top lateral bracing at U1 East – Eyebar cracked at forging (See Photo 40)
• Left truss top lateral bracing at U2 West – Significant pack rust at eyebar forging, deflection in top and bottom plate of eyebar connection
• Left truss top lateral bracing at U2 East – Significant pack rust at eyebar forging, deflection in top plate of eyebar connection
• Left truss top lateral bracing at U3 West - Significant pack rust at eyebar forging
• Left truss top lateral bracing at U3 East – Eyebar cracked at forging
• Left truss top lateral bracing at U4 East – Eyebar cracked at forging
• Left truss top lateral bracing at U6 West - Significant pack rust at eyebar forging
• Left truss top lateral bracing at U6 East - Significant pack rust at eyebar forging
• Left truss top lateral bracing at U7 West - Significant pack rust at eyebar forging
• Left truss top lateral bracing at U7 East – Significant pack rust at eyebar forging, deflection in top and bottom plate of eyebar connection
• Left truss top lateral bracing at U8 West - Significant pack rust at eyebar forging
• Left truss top lateral bracing at U8 East – Significant pack rust at eyebar forging, deflection in top and bottom plate of eyebar connection (See Photo 41)
• Left truss bottom sway bar connection at L2 – Corrosion on sway bar connection angle at strut
• Left truss bottom sway bar connection at L3 – Corrosion on sway bar connection angle at strut
• Left truss bottom lateral bracing at L7 East - Significant pack rust at eyebar forging (See Photo 42)
• Left truss bottom sway bar connection at L7 – Section loss on sway bar connection plate at strut
• Left truss bottom lateral bracing at L8 East - Significant pack rust at eyebar forging



BIN 2211290

**NYS DEPT. OF TRANSPORTATION  
BRIDGE INSPECTION REPORT  
SHEET 13 OF 15**

**TEAM****ASST. TEAM**
**LEADER:** Timothy Howland **LEADER:** Robert Fleming **DATE** 11 / 8 / 12
**Feature Carried:** Pont De Rennes
**Feature Crossed:** Genesee River
**Remarks**

Span 9
• Right truss top lateral bracing at U1 East - Significant pack rust at eyebar forging, deflection in top and bottom plate of eyebar connection
• Right truss top lateral bracing at U2 East - Significant pack rust at eyebar forging, section loss in top and bottom plate of eyebar connection
• Right truss top lateral bracing at U3 West - Significant pack rust at eyebar forging, section loss in bottom plate of eyebar connection
• Right truss top lateral bracing at U3 East - Eyebar partially cracked at forging
• Right truss top lateral bracing at U4 West - Significant pack rust at eyebar forging
• Right truss top lateral bracing at U4 East - Eyebar partially cracked at forging
• Right truss top lateral bracing at U6 East - Significant pack rust at eyebar forging
• Right truss top lateral bracing at U7 West - Eyebar cracked at forging
• Right truss bottom lateral bracing at L1 East - Eyebar partially cracked at forging
• Right truss bottom lateral bracing at L3 West - Significant pack rust at eyebar forging, deflection in top and bottom plate of eyebar connection
• Right truss bottom lateral bracing at L6 – Holes and section loss in bottom plate of eyebar connection
• Right truss bottom lateral bracing at L7 West - Significant pack rust at eyebar forging
• Right truss bottom lateral bracing at L7 East - Significant pack rust at eyebar forging
• Left truss top lateral bracing at U2 West - Eyebar partially cracked at forging
• Left truss top lateral bracing at U2 East - Eyebar partially cracked at forging
• Left truss top lateral bracing at U3 West - Significant pack rust at eyebar forging
• Left truss top lateral bracing at U5 East - Eyebar cracked at forging (See Photo 43)
• Left truss top lateral bracing at U6 West - Eyebar partially cracked at forging
• Left truss top lateral bracing at U7 West - Significant pack rust at eyebar forging
• Left truss top lateral bracing at U7 East - Significant pack rust at eyebar forging
• Left truss top lateral bracing at U8 West - Eyebar cracked at forging
• Left truss bottom lateral bracing at L1 West - Eyebar cracked at forging (See Photo 44)
• Left truss bottom lateral bracing at L1 East – Hole and section loss in bottom plate of eyebar connection
• Left truss bottom lateral bracing at L1 East - Eyebar partially cracked at forging
• Left truss bottom lateral bracing at L3 West - Eyebar partially cracked at forging
• Left truss bottom lateral bracing at L4 – Hole and section loss in bottom plate of eyebar connection (See Photo 45)
• Left truss bottom lateral bracing at L5 – Hole and section loss in bottom plate of eyebar connection
• Left truss bottom sway bar connection at L5 – Pack rust and section loss in sway bar connection angle at strut
TP350-30 Paint:
The paint for the entire structure is rated 4. The trusses have localized paint failures, rust bleed thru and pack rusting occurring. These conditions are worst at the begin and end bays of the truss. The floorbeams, stringers and steel decking exhibit general paint failure, rusting and pack rust as well. Spans 1 and 2 exhibit the worst paint failures and corrosion. (See Photos 14, 29, 30)
TP350-33 Bearing Anchor Bolt, Pads:
Span 2 bearings are rated a 4 due to a crack in the bearing pin support plate. It is the internal bearing pin plate of the right truss fixed bearing. (See Photos 46, 47)
TP350-34 Pedestals:
The pedestals are rated a 5 as the masonry beneath the tower bearing shoes is in generally good condition. However there is a crack in the masonry at the Pier 4, right tower, which should be monitored during future inspections. (See Photo 48)

BIN 2211290

**NYS DEPT. OF TRANSPORTATION  
BRIDGE INSPECTION REPORT  
SHEET 14 OF 15**

**TEAM****ASST. TEAM**
**LEADER:** Timothy Howland **LEADER:** Robert Fleming **DATE** 11 / 8 / 12
**Feature Carried:** Pont De Rennes
**Feature Crossed:** Genesee River
**Remarks**

TP350-38 Pier Columns:
All pier columns are rated 4 due to either deterioration noted in the columns, bracing or cast bearings.
The cast bearings at Pier 4 left, Pier 7 left & right and Pier 8 left column exhibited vertical cracks. These cracks do not appear to have grown since the last inspection in 2004. The cracked bearings were also repaired in 2004 with plates and rods used to cinch the bearings together and prevent further cracking. (See Photos 49, 50)
Span 1
B2 to B3 @ B2, Pack rust in previously replaced stay plate of horizontal tower strut
B2 to B1 @ B2, Hole in stay plate of horizontal tower strut and pack rust in forged eye connection plates
B2 to B4 @ B2, Section loss in forged eye and ponding water
C2 to B2 @ 1' below C2, Minor section loss in tower column
C2 to B3 @ C2, Corrosion in eyebar bearing pin
C2 to C3 @ C2, Pack rust in previously replaced stay plate of horizontal tower strut
D3 to D1 @ D3, Pack rust in forged eye connection plates
D3 to D4 @ D3, Hole in horizontal strut stay plate which also acts as connection plate for D3 to C4 forged eye bracing.
D2 to D4 @ D2, lower forged eye beginning to split
D2 to D1 @ D2, Hole in horizontal strut stay plate which also acts as connection plate for D2 to C1 forged eye bracing.
A2 to A3, Corrosion in horizontal tower strut lacing bars
A2 to A3 @ A3, Holes and corrosion in stay plate and lacing bars of horizontal tower strut (See Photo 51)
A3 to A4 @ A3, Holes and corrosion in stay plate and lacing bars of horizontal tower strut
B3 to C4 @ B3, Outer forged eye beginning to split and pack rust in connection plates
B3 to B1 @ B3, Section loss in forged eye and ponding water
C3 to B4 @ C3, Outer forged eye split
Span 2
B1 to C2 @ B1, Pack rust in connection plates
C1 to C4 @ C1, Disconnected lacing bars
C1 to B4 @ C1, Corrosion in eyebar bearing pin
C1 to C3 @ C1, Section loss in forged eye and ponding water
A1 to A2 @ A1, Holes and corrosion in stay plate and lacing bars of horizontal tower strut
A4 to A3 @ A4, Holes and corrosion in stay plate and lacing bars of horizontal tower strut
A4 to A1 @ A4, Holes and corrosion in stay plate of horizontal tower strut
B4 to B3 @ B4, Pack rust in previously replaced stay plate of horizontal tower strut
B4 to B1 @ B4, Pack rust in previously replaced stay plate of horizontal tower strut
B4 to C3 @ B4, Pack rust in forged eye connection plates
C4 to B3 @ C4, Pack rust in forged eye connection plates
C4 to D1 @ C4, Corrosion in eyebar bearing pin
C4 to D3 @ C4, Pack rust in forged eye connection plates, section loss of eyebar bearing pin and cracked interior forged eye. (See Photos 52, 53)
C4 to C2 @ C4, Section loss in forged eye
D4 to D1 @ D4, Pack rust in brace between tower column and horizontal tower strut
Span 3
B2 to C1 @ B2, Pack rust in connection plates
B2 to B4 @ B2, Section loss in forged eye and ponding water
A3 to B4 @ A3, Corrosion at eyebar bearing pin and pack rust in connection plates



BIN 2211290

**NYS DEPT. OF TRANSPORTATION  
BRIDGE INSPECTION REPORT  
SHEET 15 OF 15**

**TEAM****ASST. TEAM**
**LEADER:** Timothy Howland **LEADER:** Robert Fleming **DATE** 11 / 8 / 12
**Feature Carried:** Pont De Rennes
**Feature Crossed:** Genesee River
**Remarks**

A3 to A4 @ A3, Deformed and cracked stay plate in horizontal tower strut
Span 4
B4 to A3 @ B4, Crack in exterior forged eye
B4 to C3 @ B4, Section loss at eyebar bearing pin and pack rust in connection plates
C4 to B1 @ C4, Crack beginning in forged eye
C4 to C1 @ C4, Pack rust in previously replaced stay plate of horizontal tower strut
C4 to C2 @ C4, Section loss in forged eye
A1, Crack in cast bearing at base of column
Span 5
B3 to B1 @ B3, Crack beginning in forged eye
C3 to B2 @ C3, Crack beginning in forged eyes and corrosion in eyebar bearing pin
D3 to D2 @ D3, Previous repair unpainted
Span 6
C1 to B4 @ C1, Section loss at eyebar bearing pin (See Photo 54)
C1 to C2 @ C1, Deformed lacing bars in tower horizontal strut
B4 to A1 @ B4, Crack beginning in forged eye
A4 to B3 @ A4, Pack rust in connection plates
B4 to C3 @ B4, Pack rust in connection plates and previous repair unpainted
C4 to C3 @ C4, Holes in tower horizontal strut stay plate
C4 to C2 @ C4, Corrosion at forged eyes
D4 to C1 @ D4, Forged eye is split
D4 to D1 @ D4, Holes in tower horizontal strut stay plate
Span 7
A2, Typical repair detail for cast bearings with a crack
A2 to B1 @ A2, Twisted eye bar bracing
B2 to C1 @ B2, pack rust in connection plates
C2 to B3 @ C2, Corrosion at eyebar bearing pin and crack beginning in forged eye
Span 8
C1 to B4 @ C1, Corrosion at eyebar bearing pin
C1 to D1 @ 6' above C1, Deformation in tower column (See Photo 55)
B4 to B2 @ B4, Crack beginning and corrosion in forged eye
B4 to B3 @ B4, Holes in tower horizontal strut stay plate
B4 to C3 @ B4, Forged eye is cracked (See Photo 56)
B4 to B2 @ B4, Section loss in forged eye and ponding water (See Photo 56)
C4 to C1 @ C4, Section loss and holes in lacing bars of tower horizontal strut
D4 to D1 @ D4, Holes in tower horizontal strut stay plate
TP350-43 Lighting Stds. and Fixtures:
The rating for the lighting is downgraded to 6 from 7. The lights are still functioning and in good condition but are no longer in new condition.

# PHOTOGRAPHS

BD 220 (10/95)

**PHOTO NO. 1****Location:**

Span 5

**Description:**

Typical longitudinal crack in concrete wearing surface.

**Reference:**

TP 350-19

Photo Log File No.: 9A

**PHOTO NO. 2****Location:**

Begin (West) Joint

**Description:**

Joint failed, debris buildup.

**Reference:**

TP 349-22

Photo Log File No.: 2A





**PHOTO NO. 3****Location:**

Begin Left Bearing, South Face

**Description:**

Expansion Bearing is corroded and frozen.

**Reference:**  
TP 349-24

Photo Log File No.: 410

**PHOTO NO. 4****Location:**

Begin Left Bearing

**Description:**

Section loss in lower rear angle of strut from begin left to begin right bearing.

**Reference:**  
TP 349-24

Photo Log File No.: 412





**PHOTO NO. 5****Location:**

Begin Left Bearing

**Description:**

Local buckling in bottom chord web due to bearing being frozen in the contracted position.

**Reference:**

TP 349-24

Photo Log File No.: 416

**PHOTO NO. 6****Location:**

End Abutment, Left Bearing,  
South Face

**Description:**

General condition.

**Reference:**

TP 349-25

Photo Log File No.: 8





**PHOTO NO. 7****Location:**

Span 9 (End Abutment)  
L9 Left to L9 Right

**Description:**

Debris build-up on bridge seating contributing to the deterioration of the horizontal strut.

**Reference:**

TP 349-27

Photo Log File No.: 5

**PHOTO NO. 8****Location:**

Begin (West) Approach

**Description:**

Settled pavers around electrical box (landscaping not permanent, special event).

**Reference:**

TP 349-55

Photo Log File No.: 1A





**PHOTO NO. 9****Location:**

End (East) Approach

**Description:**

Settled asphalt and sloughing at railing along river trail.

**Reference:**

TP 349-55

Photo Log File No.: 21A



**PHOTO NO. 10****Location:**

Span 1 Left Truss  
Between U2 and U1

**Description:**

Severe section loss in fascia  
beam top flange angles.

**Reference:**

TP 350-28

Photo Log File No.: 407

**PHOTO NO. 11****Location:**

Span 1 Right Truss  
Between U8 and U9

**Description:**

Pack rust in top chord stay  
plate and stay plate has come  
loose due to failed welds.

**Reference:**

TP 350-28

Photo Log File No.: 802





**PHOTO NO. 12****Location:**

Span 1 Right Truss  
L8 to U6 @ L8

**Description:**

Pack rust in angles of truss diagonal. Typical at every diagonal location.

**Reference:**

TP 350-28

Photo Log File No.: 806

**PHOTO NO. 13****Location:**

Span 1 Right Truss  
U2 to U1 @ U2

**Description:**

Severe section loss and holes in fascia beam web.

**Reference:**

TP 350-28

Photo Log File No.: 853



**PHOTO NO. 14****Location:**

Span 1  
U1 Right to U1 Left

**Description:**

Typical corrosion in stringers at floor beam connection. Typical paint failure to stringers and floor beams.

**Reference:**

TP 350-28

TP 350-30

Photo Log File No.: 856

**PHOTO NO. 15****Location:**

Span 1  
Floorbeam @ U0

**Description:**

Severe section loss in backside flange angle of floorbeam.

**Reference:**

TP 350-28

Photo Log File No.: 866





**PHOTO NO. 16****Location:**

Span 1 Right Truss  
At U0

**Description:**

Section loss and hole in  
stringer web near right truss.  
Similar section loss and  
deterioration present in other  
stringers.

**Reference:**  
TP 350-28

**Photo Log File No.: 869**

**PHOTO NO. 17****Location:**

Span 1 Right Truss  
At U0

**Description:**

Section loss and corrosion in  
fascia stringer flange angles  
and corrosion on adjacent  
stringer.

**Reference:**  
TP 350-28

**Photo Log File No.: 870**



**PHOTO NO. 18****Location:**

Span 2 Right Truss

**Description:**

Bowed fascia beam, typical at both fascias.

**Reference:**

TP 350-28

Photo Log File No.: 792





**PHOTO NO. 19****Location:**

Span 2 Right Truss  
At U0

**Description:**

Severe section loss and holes  
in fascia stringer bottom  
flange

**Reference:**  
TP 350-28

**Photo Log File No.:791**



**PHOTO NO. 20****Location:**

Span 3 Left Truss  
Between U1 and U0

**Description:**

Pack rust in stay plate and  
previous top chord repair  
plate.

**Reference:**

TP 350-28

Photo Log File No.: 283

**PHOTO NO. 21****Location:**

Span 3 Right Truss  
Between U8 and L10

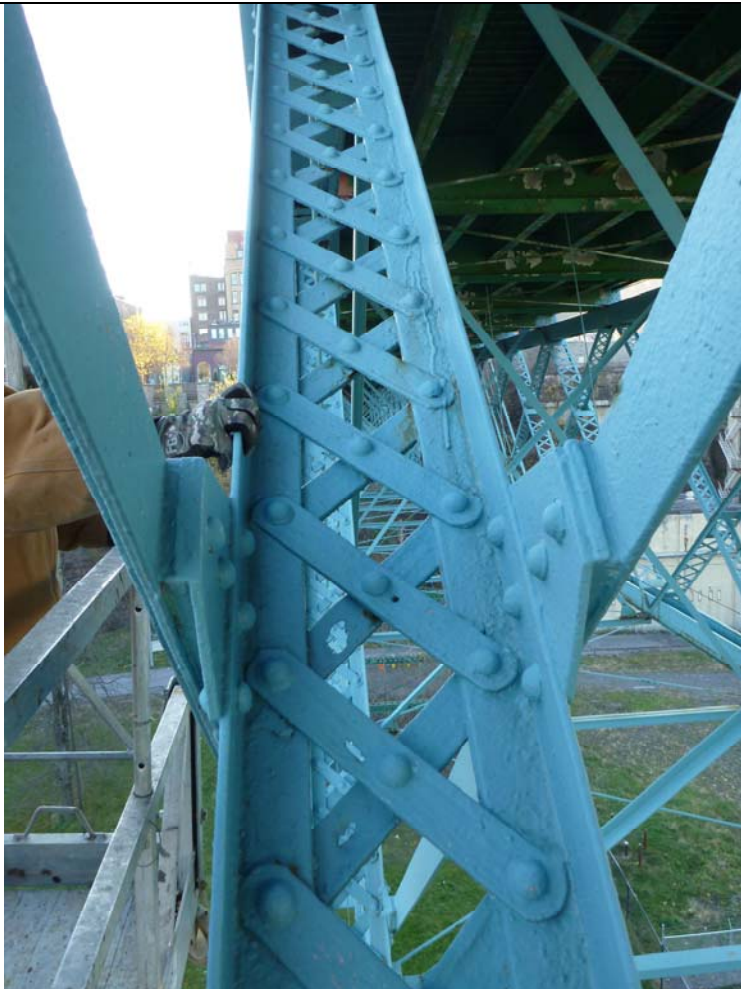
**Description:**

Holes in four lacing bars of the  
truss diagonal.

**Reference:**

TP 350-28

Photo Log File No.: 706





**PHOTO NO. 22****Location:**

Span 3 Right Truss  
U9

**Description:**

Hole in fascia beam web and  
section loss in connection  
angle to floorbeam.

**Reference:**

TP 350-28

Photo Log File No.: 708

**PHOTO NO. 23****Location:**

Span 5 Left Truss  
L7 to L8 @L7

**Description:**

Cracked and bent bottom  
chord splice/stay plate.

**Reference:**

TP 350-28

Photo Log File No.: 140



**PHOTO NO. 24, 25****Location:**

Span 7 Right Truss  
L5 to U3 @ L5

**Description:**

Outside angle deformed and buckled.

**Reference:**

TP 350-28

Photo Log File No.: 550, 558





**PHOTO NO. 26****Location:**

Span 7 Right Truss  
At U3

**Description:**

Approximately 6"x1" hole in  
floorbeam web near fascia  
stringer.

**Reference:**

TP 350-28

Photo Log File No.: 566

**PHOTO NO. 27****Location:**

Span 9 @ End Abutment  
L9 Left to L9 Right

**Description:**

Significant section loss in strut  
angles with holes and up to  
50% section loss.

**Reference:**

TP 350-28

Photo Log File No.: 5



**PHOTO NO. 28****Location:**

Span 9 LeftTruss  
U8 to L7

**Description:**

Edge of diagonal's angle  
beginning to separate along  
approximately 20" length.

**Reference:**

TP 350-28

Photo Log File No.: 12





**PHOTO NO. 29, 30****Location:**

Span 9 Left Truss  
At U8 (top photo)  
At U5 (bottom photo)

**Description:**

Holes and corrosion in main members of deck grating system. Typical paint failure to steel decking.

**Reference:**

TP 350-28  
TP 350-30

Photo Log File No.: 27, 36





**PHOTO NO. 31****Location:**

Span 9 Left Truss  
At U8

**Description:**

Hole is fascia beam web and  
electrical conduit separated  
exposing cable.

**Reference:**

TP 350-28

Photo Log File No.: 15

**PHOTO NO. 32****Location:**

Span 9 Right Truss  
Between L8 and L7

**Description:**

Pack rust in bottom chord  
flange splice.

**Reference:**

TP 350-28

Photo Log File No.: 432



**PHOTO NO. 33, 34****Location:**

Span 9 Right Truss  
Diagonal L5 to U3

**Description:**

Previous diagonal was buckled  
and braced with HSS tube.  
The HSS tube has corrosion  
and section loss.

**Reference:**

TP 350-28

Photo Log File No.: 454, 465





**PHOTO NO. 35, 36****Location:**

Span 9 Right Truss  
Diagonal L4 to U2

**Description:**

Angles are slightly buckled.

**Reference:**

TP 350-28

Photo Log File No.: 462, 463



**PHOTO NO. 37****Location:**

Span 1 Right Truss  
U3 Right to L4 Left @ U3  
Right

**Description:**

Heavy corrosion and section loss on sway bar connection plate.

**Reference:**  
TP 350-29

Photo Log File No.: 837

**PHOTO NO. 38****Location:**

Span 3 Right Truss  
U6 Right to U7 Left @ U6  
Right

**Description:**

Eyebar cracked and partially separated at forging.  
Corrosion and section loss in eyebar connection plates.

**Reference:**

TP 350-29

Photo Log File No.: 716





**PHOTO NO. 39****Location:**

Span 7 Right Truss  
U7 Right to U8 Left @ U7  
Right

**Description:**

Eyebar partially cracked and  
separated at forging.

**Reference:**  
TP 350-29

Photo Log File No.: 537

**PHOTO NO. 40****Location:**

Span 7 Left Truss  
U1 Left to U2 Right @ U1 Left

**Description:**

Eyebar cracked and  
separated at forging.

**Reference:**  
TP 350-29

Photo Log File No.: 107





**PHOTO NO. 41****Location:**

Span 7 Left Truss  
U8 Left to U9 Right @ U8 Left

**Description:**

Heavy pack rust at eyebar connection. Deflection in top and bottom connection plates.

**Reference:**  
TP 350-29

Photo Log File No.: 77

**PHOTO NO. 42****Location:**

Span 7 Left Truss  
L7 Left to L8 Right @ L7 Left

**Description:**

Heavy pack rust at eyebar connection.

**Reference:**

TP 350-29

Photo Log File No.: 83



**PHOTO NO. 43****Location:**

Span 9 Left Truss  
U5 Left to U6 Right @ U5 Left

**Description:**

Eyebar cracked and  
separated at forging.

**Reference:**

TP 350-29

Photo Log File No.: 41

**PHOTO NO. 44****Location:**

Span 9 Left Truss  
U5 Left to U6 Right @ U5 Left

**Description:**

Eyebar cracked and  
separated at forging

**Reference:**

TP 350-29

Photo Log File No.: 55





**PHOTO NO. 45****Location:**

Span 9 Left Truss  
L4 left to L5 Right @ L4 Left

**Description:**

Section loss and crack  
through to pin in lower  
connection plate for bottom  
lateral bracing eyebar.

**Reference:**

TP 350-29

Photo Log File No.: 39



**PHOTO NO. 46, 47****Location:**

Begin Span 2, Right Truss

**Description:**

Crack in internal bearing pin plate of the fixed bearing.

**Reference:**

TP 350-33

Photo Log File No.: 771  
772



**PHOTO NO. 48****Location:**

Pier 4, A4 Tower Column

**Description:**

Crack in masonry under tower column bearing shoe.

**Reference:**

TP 350-34

Photo Log File No.: 674





**PHOTO NO. 49, 50****Location:**

Pier 7 A2 (top photo)

Pier 4 A1 (bottom photo)

**Description:**

Cracked cast bearing  
repaired with plates and rods.

**Reference:**

TP 350-38

Photo Log File No.: 59, 676



**PHOTO NO. 51****Location:**

Span 1, Pier 1  
A3 to A2 @A3

**Description:**

Corrosion and holes in  
horizontal strut stay plate  
(Interior view of strut).

**Reference:**

TP 350-38

Photo Log File No.: 684





**PHOTO NO. 52, 53****Location:**

Span 2, Pier 2  
C4 to D3 @C4

**Description:**

Pack rust in forged eye connection plates, section loss of eyebar bearing pin and cracked interior forged eye.

**Reference:**

TP 350-38

Photo Log File No.: 763, 764



**PHOTO NO. 54****Location:**

Span 6, Pier 6  
C1 to B4, @C1

**Description:**

Section loss at eyebar  
bearing pin.

**Reference:**

TP 350-38

Photo Log File No.: 114

**PHOTO NO. 55****Location:**

Span 8, Pier 8  
C1 to D1, 6' up from C1

**Description:**

Deformation in tower column.

**Reference:**

TP 350-38

Photo Log File No.: 65





**PHOTO NO. 56****Location:**

Span 8, Pier 8

B4 to C3 @B4

B4 to B2 @ B4

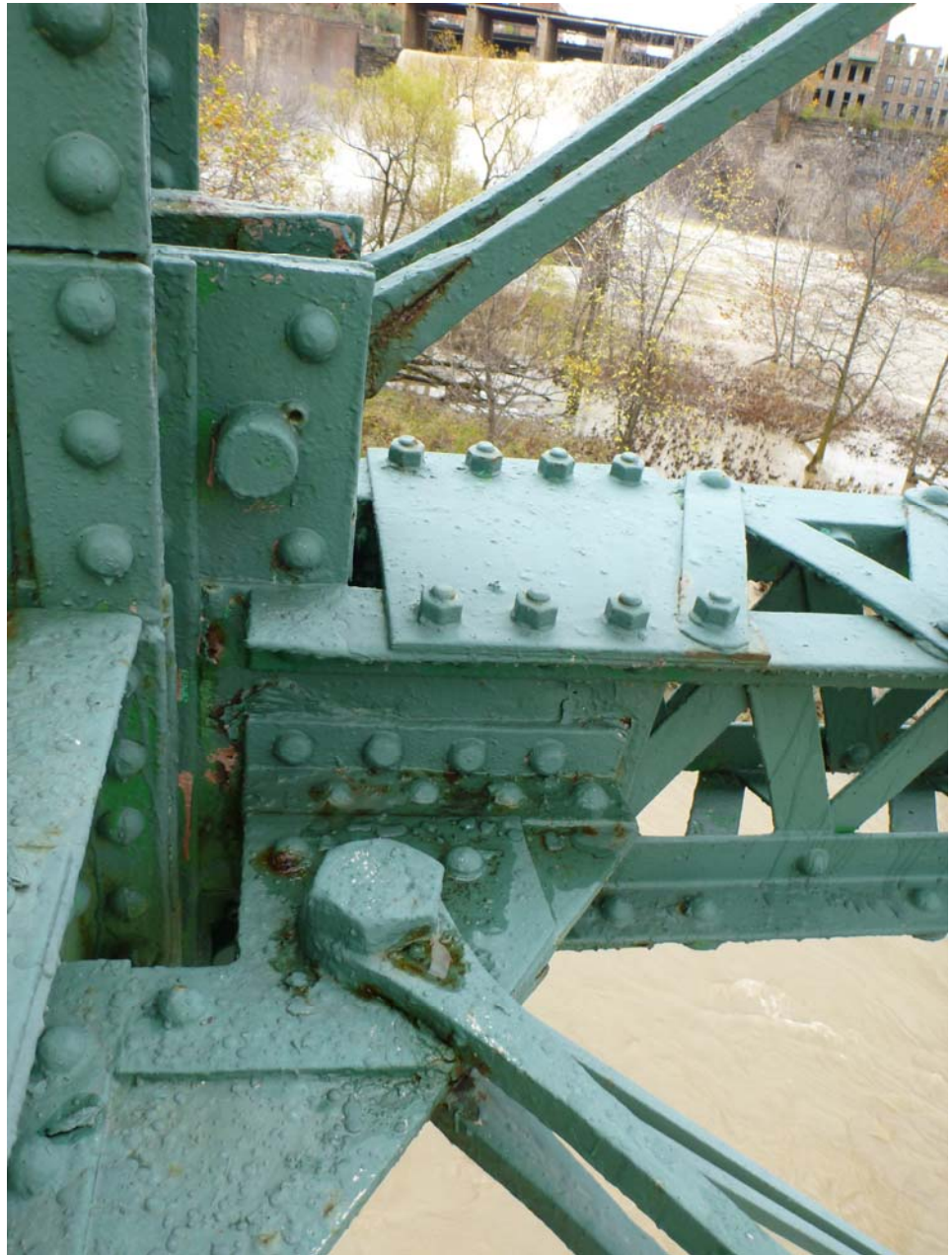
**Description:**

Crack in diagonal forged eye (B4 to C3). Section loss in Lateral forged eye and ponding of water at forged on connection plate (B4 to B2).

**Reference:**

TP 350-38

Photo Log File No.: 490





# PHOTO LOG

BD 220 (10/95)

File No.	Report Photo Number	Span / Tower	Truss / Pier	Panel Point / Column Location	Description
					Date: 10/8/12 Topside Inspection
1A	8				Settled pavers at east approach near electrical box
2A	2				Joint failed at east approach
3A					Caulk failing at routed cracks
4A					Caulk failing at electrical conduit joints
5A					Joint failing at pier 1
6A					Paint damage on railing
7A					Typical scaling and sapling at electrical conduit
8A					Spall in deck under bench near light pole #10
9A	1				Typical longitudinal cracking
10A					Joint failure at pier 2
11A					Three painted squares
12A					Previous graffiti on informational signs
13A					Longitudinal crack near light pole #14
14A					Graffiti
15A					Joint beginning to fail/debris buildup at pier 4
16A					Lower rail, northern railing bolt failure, post west of pier 4 joint
17A					Eastern abutment joint
18A					Graffiti and scratching on Riverway interpretive sign
19A					Missing and bent fence pickets at north east gate
20A					Looking west from east approach
21A	9				Settlement at southeast approach
					Date: 10/10/12
1		Span 9	North Truss	L9N	Begin north bearing
2		Span 9	North Truss	L9N	Begin north bearing (internal shot)
3		Span 9	North Truss		Inside north truss looking west
4		Span 9	North Truss		Inside north truss looking west
5	6, 27	Span 9	North Truss	L9N to L9S	Section Loss in Angle
6		Span 9	North Truss	L9N to L9S	Section Loss in Angle
7		Span 9	North Truss		Typical Underside of Span 9
8	7	Span 9	North Truss	L9N, South face	End north bearing
9		Span 9	North Truss	L8N to U6N @L8N	Section loss, pack rust in interior angle
10		Span 9	North Truss	U8N	General view of U8N
11		Span 9	South Truss	U8S	General view of U8S from L8N
12	28	Span 9	North Truss	U8N to L7N @U8N	Edge beginning to separate from angle, approx. 20"
13		Span 9	North Truss	U8N to U7S @U8N	Cracked forged eye
14		Span 9	North Truss	U8N	Bent lacing bars
15	31	Span 9	North Truss	U8N	Hole in fascia stringer web
16		Span 9	North Truss	U8N	Deterioration in angle of built up fascia stringer
17		Span 9	North Truss	U8N	Deformation in lower angle of fascia stringer
18		Span 9	North Truss	U7N to U8S @U7N	Pack rust in forged eye
19		Span 9	North Truss	L7N	Bottom splice repair (external)
20		Span 9	North Truss	L7N	Bottom splice repair (internal)
21		Span 9	North Truss	L7N to L8S, @ L7N	Pack rust in forged eye
22		Span 9	North Truss	L7N to L6S, @ L7N	Pack rust in forged eye
23		Span 9	North Truss	L7N to U7S, @ L7N	Cross member angle bracket
24		Span 9	North Truss	L8N to U6N (see elevation view)	Small section loss
25		Span 9	North Truss	11 members west of U7N	Typical underside of Span 9
26		Span 9	North Truss		Typical top chord stay plate condition
27	29	Span 9	North Truss		Hole in main cross member of deck grating
28		Span 9	North Truss	U7N to U6S @U7N	Pack rust in forged eye

File No.	Report Photo Number	Span / Tower	Truss / Pier	Panel Point / Column Location	Description
29		Span 9	North Truss	L6N	Deformation in bottom chord stay plate
30		Span 9	North Truss	L6N to L7S @ L6N	Split in forged eye, rusting of plates and bolt heads L6N to U6S
31		Span 9	North Truss	L6N to L5S @ L6N	Pack rust in eye bar
32		Span 9	North Truss	U6N to U5S @ U6N	Crack in forged eye
33		Span 9	North Truss	U6N	Corrosion on fascia
34		Span 9	North Truss	L5N to L6S @ L5N	Corrosion and hole in lateral bracing connection plate
35		Span 9	North Truss	L5N to U5S @ L5N	Corrosion on connection plate
36	30	Span 9	North Truss	U5N	Hole in web of deck grating cross member
37		Span 9	North Truss	U5N	Corrosion on fascia stringer
38		Span 9	North Truss	L4N to L3S @ L4N	Corrosion/holes in connection plate
39	45	Span 9	North Truss	L4N to L5S @ L4N	Corrosion/holes in connection plate
40		Span 9	North Truss		Span 9, north face typ., top chord stay plate welded, not bolted -bolt hole misalignment
41	43	Span 9	North Truss	U5N to U6S @ U5N	Cracked forged eye
42		Span 9	North Truss	U5N to U6S @ U5N	Rusted/deteriorated forged eye
43		Span 9	North Truss	L3N to L4S @ L3N	Pack rust in forged eye
44		Span 9	North Truss	L3N to L4S @ L3N	Pack rust in forged eye
45		Span 9	North Truss	L3N to L2S @ L3N	Crack in forged eye
46		Span 9	North Truss	U3N	Inside to top chord facing west
47		Span 9	North Truss	U3N to U2S @ U3N	Pack rust in forged eye
48		Span 9	North Truss	U3N	Pack rust in triangle on bottom of top chord
49		Span 9	North Truss	L3N	Pack rust in bottom chord splice plate
50		Span 9	North Truss	L2N	Pack rust in bottom chord splice plate (repaired)
51		Span 9	North Truss	L2N to U3N @ L2N	Pack rust in interior angles
52		Span 9	North Truss	U2N to U3S @ U2N	Crack in forged eye
53		Span 9	North Truss	U2N to U1S @ U2N	Forged eye beginning to crack
54		Span 9	North Truss	L1N to L2S @ L1N	Crack in forged eye
55	44	Span 9	North Truss	L1N to L0S @ L1N	Crack in forged eye
56		Span 9	North Truss	L0N	Looking west
					End 10/10/2012
					Start 10/11/2012
57		Span 9	North Truss	U0N to U1S @ U0N	Corroded eye bar
58		Span 8	Pier 8	A1 to B2 @ A1	Crack beginning in forged eye
59	49	Span 7	Pier 7	A2	Bearing, looking west, repaired crack in cast bearing
60		Span 7	Pier 7	A2 to B1 @ A2	Twisted eye bar
61		Span 8	Pier 7	A3 to B4 @ A3	Twisted eye bar
62		Span 8	Pier 8	B1 to C4 @ B1	Corrosion in forged eye
63		Span 8	Pier 8	C1 to B4 @ C1	Corroded bearing pin
64		Span 8	Pier 8	C1 to C4 @ C4	Holes in lacing bars
65	55	Span 8	Pier 8	C1 to D1, 6' up from C1	Deformation on column angle (interior)
66		Span 8	Pier 8	D1	Bearing
67		Span 9	North Truss	L1N to L1S	Sagging cross member
68		Span 9	North Truss	L0N	Deformation in external bearing plate
69		Span 9	North Truss	L0N	Corrosion on bearing (internal)
70		Span 7	Pier 7	B2 to C1 @ B2	Pack rust in forged eye connection plate
71		Span 7	Pier 7	C2 to B3 @ C2	Crack in forged eye
72		Span 7	Pier 7	C2 to D3 @ C2	Possible crack in forged eye
73		Span 7	North Truss	L11N to U10S @ L11N	Corrosion in plate and pin
74		Span 7	North Truss	L9 N to L9S @ L9N	Pack rust on connection plate
75		Span 7	North Truss	L9 N to L9S @ L9N	Bent angle
76		Span 7	North Truss	U8N to U9S @ U8N	Pack rust in forged eye (bottom view)
77	41	Span 7	North Truss	U8N to U9S @ U8N	Pack rust in forged eye (top view)
78		Span 7	North Truss	L8N to L9S @ L8N	Pack rust in forged eye
79		Span 7	North Truss	L7N to L8S @ L7N	Pack rust in forged eye
80		Span 7	North Truss	U8N to U7S @ U8N	Pack rust in forged eye



File No.	Report Photo Number	Span / Tower	Truss / Pier	Panel Point / Column Location	Description
81		Span 7	North Truss	U7N to U8S @U7N	Pack rust in forged eye
82		Span 7	North Truss	4' west of U8N	Corrosion and hole in fascia web
83	42	Span 7	North Truss	L7N to L8S @L7N	Thinned and corroded/pack rust in forged eye
84		Span 7	North Truss	L6N to U7N (see elevation of Span 7)	Corrosion and section loss in angle
85		Span 7	North Truss	U7N to U6S @U7N	Pack rust in forged eye
86		Span 7	North Truss	U6N to U7S, @U6N	Pack rust in forged eye
87		Span 7	North Truss	L6N to L5N	Pack rust in bottom chord splice plate
88		Span 7	North Truss	L7N to U7S @L7N	Pack rust/corrosion in angle bracket
89		Span 7	North Truss		Typical underside
90		Span 7	North Truss	L5N to U6N (see Span 7 elevation)	Corrosion on angle
91		Span 7	North Truss	U6N to U5S @U6N	Pack rust in forged eye
92		Span 7	North Truss	U5N	General corrosion on top chord
93		Span 7	North Truss	U4N to U5S @U4N	Crack in forged eye
94		Span 7	North Truss	L4N to U5N @L4N	Corrosion in angles
95		Span 7	North Truss	L4N	Bottom chord splice plate (external)
96		Span 7	North Truss	L4N	Bottom chord splice plate (internal)
97		Span 7	North Truss	L3N to U4N (see Span 7 elevation)	Corrosion on external angle
98		Span 7	North Truss	L3N to U4N (see Span 7 elevation)	Corrosion on external angle
99		Span 7	North Truss	U3N to U4S @U3N	Pack rust with possible cracked forged eye
100		Span 7	North Truss	U4N	Hole in fascia web
101		Span 7	North Truss	L3N to U3S @L3N	Corrosion in angle plate, missing nut
102		Span 7	North Truss	U3N to U2S @U3N	Pack rust in forged eye
103		Span 7	North Truss	U2N to U3S @U2N	Pack rust in forged eye, hole in floor beam web
104		Span 7	North Truss	L2N to L3S @L2N	Corrosion in eye plate
105		Span 7	North Truss	L2N	Pack rust in bottom chord splice plate
106		Span 7	North Truss	L2N to U1S @L2N	Pack rust in angle bracket
107	40	Span 7	North Truss	U1N to U2S @U1N	Crack in forged eye (bottom)
108		Span 7	North Truss	U1N to U2S @U1N	Crack in forged eye (top)
109		Span 7	North Truss	U2N to U1S @U2N	Pack rust in forged eye
110		Span 7	North Truss	U2N to U1N (see Span 7 elevation)	General corrosion in top chord stay plate
111		Span 7	North Truss	U2N	Hole in fascia web
112		Span 6	Pier 6	A1 to B4 @A1	Twisted eye bar
113		Span 6	Pier 6	A1 to A4 @A1	Typical lacing bar condition
114	54	Span 6	Pier 6	C1 to B4, @C1	Anchor pin pack rust
115		Span 6	Pier 6	C1 to C4 @C1	Typical lacing bar condition
116		Span 6	Pier 6	C1 to C2 @C1	Deformed lacing bars
117		Span 7	North Truss	L1N to L0S @L1N	Pack rust on angles, corroded eye bar plates
118		Span 7	North Truss	L0N, pier 3/span4	East face of bearing
119		Span 7	North Truss	L02 to U1N (see Span 7 elevation)	Typical lacing bar condition
120		Span 7	North Truss	U1N to U0N (see Span 7 elevation)	Pack rust/corrosion in top chord stay plate
121		Span 7	North Truss	U1N to U0N (see Span 7 elevation)	Typical corrosion on lacing bars
122		Span 7	North Truss	U1N to U0S @U1N	Pack rust in forged eye
123		Span 7	North Truss	U0N to U1S @U0N	Corrosion and pack rust in forged eye
124		Span 5	Pier 5	C2 to D2 @C2	Repair
125		Span 5	Pier 5	C2 to D3 @C2	Corrosion on pin
126		Span 5	North Truss	L10N to L11S @L10N	Pack rust in forged eye
127		Span 5	North Truss	L11N to L10S @L11N	Pack rust in forged eye
128		Span 5	North Truss	U10N	Typical underside of Span 5 facing west
129		Span 5	North Truss	U10 N (see Span 5 elevation)	Pack rust in top chord stay plate
130		Span 5	North Truss	U10 N to U9S @U10N	Pack rust in forged eye
131		Span 5	North Truss	U9 N to U10S @U9N	Pack rust in forged eye
132		Span 5	North Truss	L9N	Pack rust in bottom chord splice plate
133		Span 5	North Truss	L9N to L10S @L9N	Pack rust in forged eye
134		Span 5	North Truss	L9N to L8S @L9N	Pack rust in forged eye
135		Span 5	North Truss	U8N to U7S @U8N	Pack rust in forged eye
136		Span 5	North Truss	U7S to U8N @U7S	Pack rust in forged eye
137		Span 5	North Truss	L8N to U6N @L8N	Pack rust in interior angles

File No.	Report Photo Number	Span / Tower	Truss / Pier	Panel Point / Column Location	Description
138		Span 5	North Truss	L8N	General corrosion on forged eye connection plate
139		Span 5	North Truss	U7N to U8S @U7N	Pack rust in forged eye
140	23	Span 5	North Truss	L7N	Cracked and bent bottom chord stay plate
141		Span 5	North Truss	L7N	Missing rivet in angle
142		Span 5	North Truss	L7N to U5N @L7N	Pack rust in angles (interior)
143		Span 5	North Truss	L7N to L6S @L7N	Beginning of crack in forged eye
144		Span 5	North Truss	L6N to U7N @ L7N to U5N	Pack rust in cross point
145		Span 5	North Truss	L6N to U7N @ L8N to U6N	Pack rust in cross point
146		Span 5	North Truss	L6N to U7N (see Span 5 elevation)	Buckled angle/ lacing bars, newer HSS 4x6 added
147		Span 5	North Truss	U7N to U6S @U7N	Pack rust in forged eye
148		Span 5	North Truss	U6N to U7S @U6N	Pack rust in forged eye
149		Span 5	North Truss	L6N to L7S @L6N	Pack rust in forged eye
150		Span 5	North Truss	L6N to U7N near U7N (see Span 5 elevation)	Buckled angle (see photo 146)
151		Span 5	North Truss	L6N	General condition of new nuts
152		Span 5	North Truss	L6N to U7N (see Span 5 elevation)	Corrosion in new HSS 4x6
153		Span 5	North Truss	U6N to U5S @U6N	Pack rust in forged eye
154		Span 5	North Truss	U5N to U6S @U5N	Pack rust in forged eye
155		Span 5	North Truss	U6N to U5N (see Span 5 elevation)	Typical condition of top chord top plate
156		Span 5	North Truss	L5N to L6S @L5N	Pack rust in forged eye
157		Span 5	North Truss	U5N to U6S @U5N	Pack rust in forged eye
158		Span 5	North Truss	L6N to U4N near U4N (see Span 5 elevation)	Slight buckle in angle
159		Span 5	North Truss	U5N to U4N (see Span 5 elevation)	Corrosion in fascia bottom flange
160		Span 5	North Truss	U4N to U5S @U4N	Pack rust in forged eye
161		Span 5	North Truss	L4N to L5S @L4N	Crack and pack rust in forged eye
162		Span 5	North Truss	L4N to U5N @L4N	Pack rust in angles
163		Span 5	North Truss	L4N to L3S @L4N	Pack rust and small crack in forged eye
164		Span 5	North Truss	U4N to U3S @U4N	Crack in forged eye
165		Span 5	North Truss	U3N to U4S @U3N	Crack in forged eye
166		Span 5	North Truss	L4N	Pack rust in bottom chord splice plate
167		Span 5	North Truss	L3N, 2' east of L3N	Deformation in bottom chord angle
168		Span 5	North Truss	L3N to L4S @L3N	Pack rust in forged eye
169		Span 5	North Truss	L3N to U4N @L3N	Pack rust in interior angles
170		Span 5	North Truss	L3N to U2S @L3N	Corrosion in connection plate
171		Span 5	North Truss	U2N	General underside of deck looking west
172		Span 5	North Truss	U2N	General photo of Pier 2 looking west
173		Span 5	North Truss	U2N to U3S @U2N	Pack rust and corrosion in forged eye
174		Span 5	North Truss	U3N to U2N (see Span 5 elevation)	Corrosion in fascia beam
175		Span 5	North Truss	L2N to L3S @L2N	Pack rust in forged eye
176		Span 5	North Truss	L2N	Corrosion in bottom chord splice plate
177		Span 5	North Truss	L2N to L1S @L2N	Pack rust in forged eye
178		Span 5	North Truss	L2N to U3N @L2N	Corrosion in interior angles
179		Span 5	North Truss	L2N to U1S @L2N	Corrosion in angle and connection plate
180		Span 5	North Truss	L2N	Pack rust in bottom chord splice plates
181		Span 5	North Truss	U2N	Pack rust in top chord stay plate
182		Span 5	North Truss	U2N to U1S @U2N	Pack rust in forged eye
183		Span 5	North Truss	U1N	General corrosion
184		Span 5	North Truss	U1N to U2S @U1N	Pack rust in forged eye
185		Span 5	North Truss	U2N	Holes in web of fascia stringer
186		Span 4	Pier 4	B1 to B4 @B1	Typical condition of lacing bars
187		Span 4	Pier 4	B1 to C2 @B1	Pack rust in connection plate
188		Span 4	Pier 4	B1 to C4 @B1	Interior view of column to pin connection
189		Span 4	Pier 4	D1 east side	Corrosion on bearing
190		Span 4	Pier 4	D1 north face	Bent bearing pin plate
191		Span 5	North Truss	L1N to L0S @L1N	Pack rust in forged eye
192		Span 5	North Truss	U1N to U0S @U1N	Pack rust in forged eye
193		Span 5	North Truss	U02 to U1S @U0N	Pack rust in forged eye
194		Span 5	North Truss	U0N	Tear in fascia web
195		Span 4	Pier 3	B2 to B4 @B2	Eye bar connections

File No.	Report Photo Number	Span / Tower	Truss / Pier	Panel Point / Column Location	Description
196		Span 4	Pier 3	B2 to C3/A3 @B2	Pack rust in eye bars/pin
197		Span 4	Pier 3	B2 to C1 @B2	Pack rust in connection plate
198		Span 4	Pier 3	C2 to B3/D3	Corrosion on connection pin
199		Span 3	North Truss	L11N to L10S @L11N	Pack rust in forged eye
200		Span 3	North Truss	L11N looking east	Bearing pin (internal view)
201		Span 3	North Truss	L10N to L11S @L10N	Pack rust in forged eye
202		Span 3	North Truss	L11N to U8N @L10N	Pack rust in angles
203		Span 3	North Truss	L11N to U10S @L11N	Corrosion at pin of forged eyes
204		Span 3	North Truss	U10N to U9S @U10N	Pack rust in forged eye
205		Span 3	North Truss	U9N to U10S @U9N	Pack rust in forged eye
206		Span 3	North Truss	L9N to L10N @ L9N	Pack rust in forged eye
207		Span 3	North Truss	L9N to L8N @L9N	Pack rust in forged eye
208		Span 3	North Truss	L9N to U7N @L9N	Corrosion on angle (external)
209		Span 3	North Truss	L9N to U7N @L9N	Corrosion on angle (internal)
210		Span 3	North Truss	L9N	Pack rust on splice plate (internal)
211		Span 3	North Truss	U10N to U9N (see Span 3 elevation)	Corrosion in top chord plate (possible previous repair)
212		Span 3	North Truss	U9N to U8N (see Span 3 elevation)	Corrosion on top chord stay plate
213		Span 3	North Truss	U9N to U8S @U9N	Pack rust in forged eye
214		Span 3	North Truss	U8N to U9S @U8N	Pack rust in forged eye
215		Span 3	North Truss	L8N to L9S @L8N	Pack rust in forged eye, deformation in connection plate
216		Span 3	North Truss	L8N to U6N @L8N	Pack rust in angles (internal view)
217		Span 3	North Truss	L8N to U8S @L8N	Pack rust in angle connection plate
218		Span 3	North Truss	L7N to U8N (see Span 3 elevation)	Corrosion on tie rod
219		Span 3	North Truss	U8N to U7S @U8N	Pack rust in forged eyes, section loss in top chord plate
220		Span 3	North Truss	U7N to U8S @U7N	Deterioration in forged eye connection plate
221		Span 3	North Truss	U7N	Deterioration in top chord repair plate
222		Span 3	North Truss	U8N	Hole and deterioration in fascia web
223		Span 3	North Truss	L7N to L8S @L7N, L7N to U7S	Pack rust in forged eyes, pack rust in cross member connection plate
224		Span 3	North Truss	L7N to U7S @L7N	Corrosion on angle connection plate
225		Span 3	North Truss	L7N, looking west	Typical underside of Span 3
226		Span 3	North Truss	L7N, looking west	Typical underside of Span 3
227		Span 3	North Truss	U7N to U6S @U7N	Pack rust in forged eye
228		Span 3	North Truss	U6N to U7S @U6N	Pack rust and crack in forged eye
229		Span 3	North Truss	L6N to L7S @L6N	Pack rust in forged eye
230		Span 3	North Truss	L6N to L5S @L6N	Pack rust in forged eye, L6N to U5S corrosion on connection plate
231		Span 3	North Truss	L7N to L6S (see Span 3 elevation)	Corrosion on bottom chord splice plate
232		Span 3	North Truss	U6N to U5S @U6N	Pack rust in forged eye
233		Span 3	North Truss	U5N to U6S @U5N	Pack rust and possible crack in forged eye
234		Span 3	North Truss	L5N to L6S @L5N	Pack rust in forged eye
235		Span 3	North Truss	L5N to L4S @L5N	Pack rust in forged eye
236		Span 3	North Truss	L5N to U4S @L5N	Pack rust in angle connection plate
237		Span 3	North Truss	L5N, looking east	Typical rust on lacing bars
238		Span 3	North Truss	U5N to U4S @U5N	Pack rust in forged eye
239		Span 3	North Truss	U4N to U5S @U4N	Forged eye thinned, possible crack
240		Span 3	North Truss	U5N to U4N (see Span 3 elevation)	Corrosion in top chord stay plate
241		Span 3	North Truss	L4N	Corrosion and section loss in bottom chord angle
242		Span 3	North Truss	L4N to U3S @L4N	Corrosion and section loss in connection plate for cross member
243		Span 3	North Truss	L3N	Rust and deformation in bottom flange of bottom chord
244		Span 3	North Truss	L3N	General rust corrosion
245		Span 3	North Truss	L3N to L4S @L3N	Pack rust and deformation in forged eye, pin almost entirely gone



File No.	Report Photo Number	Span / Tower	Truss / Pier	Panel Point / Column Location	Description
246		Span 3	North Truss	L3N to L2S @L3N	Pack rust and deformation in forged eye, pin almost entirely gone
247		Span 3	North Truss	L3N top view of joint	General corrosion and paint failure
248		Span 3	North Truss	U2N to U3S @U2N	Pack rust and crack in forged eye
					End 10/12/12
					Begin 10/15/12
249					Not used
250		Span 3	North Truss	L2N to L3S @L2N	Pack rust in forged eye
251		Span 3	North Truss	L2N to U3@ @L2N	Pack rust in angles (interior view)
252		Span 3	North Truss	L2N	Pack rust in bottom chord splice plate (see photo 254, 255)
253		Span 3	North Truss	L2N to L1S @L2N	Pack rust in forged eye
254		Span 3	North Truss	L2N	Interior view of bottom chord splice plate (see photo 252, 255)
255		Span 3	North Truss	L2N	Top view of bottom chord splice place (see photo 252, 254)
256		Span 3	North Truss	L2N to U1S @L2N	Corrosion in connection plate
257		Span 3	North Truss	L2N to U3N (see Span 3 elevation)	Corrosion in angle member
258		Span 3	North Truss	L1N to U2N (see Span 3 elevation)	Typical corrosion in diagonal member
259		Span 3	North Truss	U2N to U1N (see Span 3 elevation)	Corrosion in top chord stay plate
260		Span 3	North Truss	U2N to U1S @U2N	Pack rust in forged eye and top chord to floor beam connection
261		Span 3	North Truss	U1N to U2S @U1N	Pack rust in forged eye and top chord to floor beam connection
262		Span 2	Pier 2	B1 to A4 @B1	Corrosion on bearing pin bottom view
263		Span 2	Pier 2	B1 to C4 @B1	Corrosion on bearing pin bottom view
264		Span 2	Pier 2	B1 to C2 @B1	Pack rust in connection plate, corrosion in pin
265		Span 2	Pier 2	B1 to B4 (see pier 1 elevation)	Typical condition of lacing bars
266		Span 2	Pier 2	C1 to C4 (see pier 1 elevation)	Disconnected lacing bars
267		Span 2	Pier 2	C1 to B4 @B4	Corrosion in pin
268		Span 2	Pier 2	C1 to C3 @C1	Corrosion in eye bar
269		Span 2	Pier 2	C1 to D2 @C1	Pack rust in pin
270		Span 3	North Truss	L0N	Pack rust in angle
271		Span 2	Pier 2	D1 to D4	General pack rust and corrosion
272		Span 2	Pier 2	L0N facing west	Bearing
273		Span 2	Pier 2	D1 to D4	Top view of member (see photo 271)
274		Span 3	North Truss	L1N to U2N, @L1N	Pack rust in angles, corrosion in stay plate
275		Span 3	North Truss	L1N to L0S @L1N	Pack rust in forged eye
276		Span 3	North Truss	L1N to L0S & L0N to L1S	Sagging tie rods
277		Span 3	North Truss	L1N to L2S @L1N	Pack rust in forged eye, corrosion on plate
278		Span 3	North Truss	L0N to U1N @L0N	Pack rust on angles
279		Span 3	North Truss	L0N to U0N @L0N	Pack rust in angles
280		Span 3	North Truss	L0N	General shot of underside of span over pier 1
281		Span 3	North Truss	U1N to L0N @U1N	Pack rust in angles
282		Span 3	North Truss	U1N to U2S @U1N	Pack rust and possible crack in forged eye
283	20	Span 3	North Truss	U1N to U0N (see Span 3 elevation)	Corrosion and pack rust in top chord stay plate
284		Span 3	North Truss	U1N to U0S @U1N	Pack rust in forged eye, corrosion in top chord to floor beam connection
285		Span 3	North Truss	U0N	General corrosion in top chord to floor beam connection
286		Span 3	North Truss	U0N to U1S @U0N	Pack rust in forged eye
287		Span 2	Pier 1	B2 to A3 @B2	Corrosion in bearing pin (see photo 289)
288		Span 2	Pier 1	B2 to B3 @B2	Pack rust in stay plate
289		Span 2	Pier 1	B2 to C3 @B2	Corrosion in bearing pin (see photo 287)
290		Span 2	Pier 1	B2 to B1 @B2	Hole in stay plate, pack rust in bearing pin plate, thinning in forged eye
291		Span 2	Pier 1	B2 to B4 @B2	Section loss in forged eye

File No.	Report Photo Number	Span / Tower	Truss / Pier	Panel Point / Column Location	Description
292		Span 2	Pier 1	C2 to B2 @1' below C2	Minor section loss in column
293		Span 2	Pier 1	C2 to B3 @C2	Corrosion in bearing pin (see photo 295)
294		Span 2	Pier 1	C2 to C3 @C2	Pack rust and corrosion in stay plate
295		Span 2	Pier 1	C2 to D3 @C2	Corrosion in bearing pin (see photo 293)
296		Span 2	Pier 1	C2 to C4 @C2	Corrosion in forged eye
297		Span 2	Pier 1	D3 to D1 @D3	Pack rust in connection plate for forged eye
298		Span 2	Pier 1	D2 to D4 @D2	Crack in forged eye, hole in stay plate
299		Span 2	Pier 1	D2	General photo of joint
300		Span 1	North Truss	L10N to L11S @L10N	Pack rust in forged eye and connection plate
301		Span 1	North Truss	L10 N to U8N @L10N	Pack rust in angles (interior view)
302		Span 1	North Truss	L10N to L9S @L10N	Pack rust in forged eye
303		Span 1	North Truss	L11N to L10S @L11N	Crack in forged eye
304		Span 1	North Truss	L11N to U10S @L11N	General photo of joint
305		Span 1	North Truss	L11N to U9N @L11N	Pack rust in angles (interior view)
306		Span 1	North Truss	L11N to U9N (see span 1 elevation)	General corrosion on angles
307		Span 1	North Truss	U10N to U9N (see span 1 elevation)	Pack rust, corrosion, section loss in top chord stay plate, bottom view
308		Span 1	North Truss	U10N to U9N (see span 1 elevation)	Pack rust, corrosion, section loss in top chord stay plate interior view
309		Span 1	North Truss	U10N to U9N (see span 1 elevation)	Pack rust, corrosion, section loss in top chord stay plate interior view
310		Span 1	North Truss	U10N to U9N (see span 1 elevation)	Pack rust, corrosion, section loss in top chord stay plate, interior view
311		Span 1	North Truss	U10N to U9N (see span 1 elevation)	Pack rust, corrosion, section loss in top chord stay plate, backside view
312		Span 1	North Truss	U10N to U9N (see span 1 elevation)	Pack rust, corrosion, section loss in top chord stay plate, top view
313		Span 1	North Truss	U10N to U9 @U10N	Pack rust in forged eye
314		Span 1	North Truss	U9N to U10S @U9N	Pack rust in forged eye
315		Span 1	North Truss	L9N	Pack rust in bottom chord splice plate
316		Span 1	North Truss	L9N to L10N @L9N	Pack rust in angles
317		Span 1	North Truss	L9N to U7N @L9N	Pack rust in angles
318		Span 1	North Truss	L9N to L10S @L9M	Pack rust in forged eye
319		Span 1	North Truss	L9N to L9S	Bent cross member, looking east
320		Span 1	North Truss	L9N to L9S	Bent cross member, looking west
321		Span 1	North Truss	L9N to L8S @L9N	Pack rust in forged eye
322		Span 1	North Truss	L9N	Section loss in bottom chord exterior at junction with angles
323		Span 1	North Truss	L9N to U9S @L9N	Pack rust in angles and connection plate
324		Span 1	North Truss	L9N	Pack rust in bottom chord splice
325		Span 1	North Truss	L9N	Pack rust in bottom chord splice, backside
326		Span 1	North Truss	U9N to L10N @U9N	Corrosion in previous repair plate (see photo 328)
327		Span 1	North Truss	U9N to U8S @U9N	Pack rust and crack in forged eye bottom view
328		Span 1	North Truss	U9N to L10N @U9N	Corrosion in previous repair plate, internal view(see photo 328)
329		Span 1	North Truss	U9N to U8S @U9N	Pack rust and crack in forged eye top view
330		Span 1	North Truss	U8N to U9S @U8N	Pack rust in forged eye
331		Span 1	North Truss	L8N to L9S @L8N	Pack rust in forged eye
332		Span 1	North Truss	L8N to U6N @L8N	Pack rust in angles, looking west
333		Span 1	North Truss	L8N to U6N @L8N	Pack rust in angles, looking east
334		Span 1	North Truss	L8N to L7S @L8N	Pack rust in forged eye
335		Span 1	North Truss	L8N to U8S @L8N	Corrosion on angle connection plate
336		Span 1	North Truss	U8N to U7S @U8N	Pack rust in forged eye
337		Span 1	North Truss	U7N to U8S @U7N	Pack rust in forged eye
338		Span 1	North Truss	U7N	Floor beam to fascia connection corrosion and section loss
339		Span 1	North Truss	L7N	Pack rust in bottom chord splice plate
340		Span 1	North Truss	L8N to L7S	Twisted eye bar

File No.	Report Photo Number	Span / Tower	Truss / Pier	Panel Point / Column Location	Description
341		Span 1	North Truss	L7N to L6S	Twisted eye bar
342		Span 1	North Truss	L7N to U5N @L7N	Pack rust in angles
343		Span 1	North Truss	L7N to L8S @L7N	Pack rust in forged eye
344		Span 1	North Truss	L7N to L6S @L7N	Pack rust in forged eye
345		Span 1	North Truss	L7N to U7S @L7N	Corrosion in angle bracket
346		Span 1	North Truss		General underside of truss looking at begin abutment
347		Span 1	North Truss		General underside of truss looking at end abutment
348		Span 1	North Truss	U6N to U7S @U6N	Pack rust in forged eye (bottom view)
349		Span 1	North Truss	U6N to U7S @U6N	Pack rust in forged eye, possible crack (top view)
350		Span 1	North Truss	U7N to U6S @U7N	Pack rust in forged eye
351		Span 1	North Truss	U7N	General underside of stringers
352		Span 1	North Truss	L6N to L7S @L6N	Pack rust in forged eye
353		Span 1	North Truss	L6N to L5N (see span 1 elevation)	General rust on bottom chord
354		Span 1	North Truss	L6N to L5N (see span 1 elevation)	Pack rust in bottom chord splice (see photo 357)
355		Span 1	North Truss	L6N to L5S @L6N	Pack rust in forged eye
356		Span 1	North Truss	L6N to L6S	Sagging and deformed cross member
357		Span 1	North Truss	L6N to L5N (see span 1 elevation)	Bottom chord splice, top view (see photo 354)
358		Span 1	North Truss	U5N to U6S @U5N	Pack rust in forged eye (bottom view)
359		Span 1	North Truss	U6N to U5S @U6N	Crack in forged eye (bottom view)
360		Span 1	North Truss	U5N to U6S @U5N	Pack rust in forged eye
361		Span 1	North Truss	U6N to U5S @U6N	Crack in forged eye
362		Span 1	North Truss	U5N	Hole in fascia web and angle
363		Span 1	North Truss	L5N to L6S @L5N	Pack rust in forged eye
364		Span 1	North Truss	L5N to L4S @L5N	Pack rust in forged eye
365		Span 1	North Truss	L5N to L4N (see span 1 elevation)	Corrosion on bottom chord
366		Span 1	North Truss	L5N	Corrosion and hole in eye bar connection plate
367		Span 1	North Truss	L6N to U4N (see span 1 elevation)	General corrosion
368		Span 1	North Truss	U5N to U4S @U5N	Pack rust in forged eye, corrosion on floor beam to top chord connection
369		Span 1	North Truss	U5N to U4N (see span 1 elevation)	Corrosion on top chord
370		Span 1	North Truss	U4N to U5S @U4N	Pack rust in forged eye
371		Span 1	North Truss	L4N to L5S @L4N	Pack rust in forged eye
372		Span 1	North Truss	L4N to U5N @L4N	Pack rust in angles
373		Span 1	North Truss	L4N to L3S @L4N	Pack rust in forged eye
374		Span 1	North Truss	L4N	Pack rust in splice plate (external view)
375		Span 1	North Truss	L4N	Pack rust in splice plate (backside view)
376		Span 1	North Truss	L0S	Supported over stone arch
377		Span 1	North Truss	L0S	Supported over stone arch
378		Span 1	North Truss	U4N to U3S @U4N	Crack in forged eye (bottom view)
379		Span 1	North Truss	U3N to U4S @U3N	Crack in forged eye (bottom view)
380		Span 1	North Truss	U3N to U4S @U3N	Crack in forged eye (top view)
381		Span 1	North Truss	U4N to U3S @U4N	Crack in forged eye (top view)
382		Span 1	North Truss	L3N to L2S @L3N	Pack rust in forged eye
383		Span 1	North Truss	L3N to L2S @L3N	Pack rust in forged eye
384		Span 1	North Truss	L3N to U4N @L3N	Pack rust in angles
385		Span 1	North Truss	L3N to U2S @L3N	Corrosion on angle bracket
386		Span 1	North Truss		General view of begin abutment
387		Span 1	North Truss	L4N to U2N (see span 1 elevation)	General rust and corrosion on angle
388		Span 1	North Truss	U3N to U2S @U3N	Pack rust in forged eye
389		Span 1	North Truss	U3N to U2N (see span 1 elevation)	General rust and corrosion on top chord
390		Span 1	North Truss	U2N to U3S @U2N	Pack rust in forged eye
391		Span 1	North Truss	U2N	Tear in fascia web
392		Span 1	North Truss	L2N to L3S @L2N	Pack rust in forged eye
393		Span 1	North Truss	L2N to U3N @L2N	Pack rust in angles, corrosion on stay plate



File No.	Report Photo Number	Span / Tower	Truss / Pier	Panel Point / Column Location	Description
394		Span 1	North Truss	L2N to L1S @L2N	Pack rust in forged eye
395		Span 1	North Truss	L2N	Pack rust in bottom chord splice plate (external)
396		Span 1	North Truss	L2N	Pack rust in bottom chord splice plate (backside)
397		Span 1	North Truss	L2N	Pack rust in bottom chord splice plate (top)
398		Span 1	North Truss	L2N to U1S @L2N	Corrosion and pack rust in angle and connection plate
399		Span 1	North Truss	L0S	General view of begin south bearing
400		Span 1	North Truss	L1N to U2N (see span 1 elevation)	General corrosion and paint failure
401		Span 1	North Truss	U2N	Corrosion in top chord stay plate
402		Span 1	North Truss	U2N looking east	Pack rust and corrosion in top chord stay plate
403		Span 1	North Truss	U2N to U1S @U2N	Pack rust in forged eye
404		Span 1	North Truss	U2N @4' west of U2N	Corrosion in bottom of floor stringer
405		Span 1	North Truss	U1N to U2S @U1N	Pack rust in forged eye
406		Span 1	North Truss	U2N to U1N	General corrosion in lacing bars
407	10	Span 1	North Truss	U2N @4' west of U2N	Section loss in fascia stringer
408		Span 1	North Truss	L1N	Pack rust in both forged eyes
409		Span 1	North Truss	L0N to L1S @L0N	Pack rust in forged eye
410	3				South side of north begin bearing
411				L0N to U0S @L0N	Corrosion
412	4			L0N to U0S @L0N	Corrosion, section loss
413					East side of north begin bearing, bottom view
414					East side of north begin bearing, inside view
415				L0N to L0S	Corrosion and section loss, web loss 2' south of north begin bearing
416	5			North begin bearing	Buckled web
417				North begin bearing	Buckled web
418				L1S	Pack rust in eye bar connection plate
419				North side of south begin bearing	
				11/5/2012	
420		Span 9	South Truss	End Abutment, South	End South Abutment
421		Span 9	South Truss	End Abutment, South	End South Abutment
422		Span 9	South Truss	U8S	General shot of U8S
423		Span 9	South Truss	U7S TO L9S @ U7S	Pack rust in angles
424		Span 9	South Truss	U7S to U8N @U7S	Pack rust in forged eye
425		Span 9	South Truss	U7S to U8N @U7S	Pack rust in forged eye, top view
426		Span 9	South Truss	U8S to U7N @U8S	Pack rust and corrosion in forged eye
427		Span 9	South Truss	U7S to U8S (see Span 9 elevation)	Section loss in top chord
428		Span 9	South Truss	L6S to L7S (see Span 9 elevation)	Rust in bottom chord
429		Span 9	South Truss	L7S to U5S @L7S	Pack rust in angles
430		Span 9	South Truss	L7S to L8N @L7S	Pack rust in forged eye
431		Span 9	South Truss	L7S to L6N @L7S	Pack rust in forged eye
432	32	Span 9	South Truss	L7S to L8S (see Span 9 elevation)	Pack rust in bottom chord splice (interior)
433		Span 9	South Truss	L7S	General corrosion at panel point
434		Span 9	South Truss	L7S looking west	General underside of Span 9
435		Span 9	South Truss	U6S to U7S (see Span 9 elevation)	Pack rust in top chord bottom splice plate
436		Span 9	South Truss	U7S to U6N @U7S	Cracked forged eye
437		Span 9	South Truss	U6S to U7N @U6S	Pack rust in forged eye
438		Span 9	South Truss	L8S to U6S @U6S	Corrosion on angle exterior
439		Span 9	South Truss	L6S	Hole in eye bar connection plate
440		Span 9	South Truss	L6S	Pack rust and corrosion in bottom chord
441		Span 9	South Truss	L6S	Corrosion in eye bar connection plate
442		Span 9	South Truss	L5S to U6S (see Span 9 elevation)	Pack rust in angles
443		Span 9	South Truss	L5S to U6S (see Span 9 elevation)	Pack rust in angles, section loss
444		Span 9	South Truss	U6S to U5N @U6S	pack rust in forged eye
445		Span 9	South Truss	U5S to U6N @U5S	pack rust in forged eye
446		Span 9	South Truss	U5S to U6S (see Span 9 elevation)	Hole in fascia web

File No.	Report Photo Number	Span / Tower	Truss / Pier	Panel Point / Column Location	Description
447		Span 9	South Truss	L5S to L6N @L5S	Pack rust in forged eye
448		Span 9	South Truss	L5S to L4N @L5S	Corrosion in forged eye plate
449		Span 9	South Truss	L5S to U3S @L5S	Corrosion in plate
450		Span 9	South Truss	L5S to U3S	Buckling in angles
451		Span 9	South Truss	L4S to L5S (see Span 9 elevation)	Pack rust in bottom chord splice
452		Span 9	South Truss	L5S to U3S @L5S	Corrosion on plate and newer HSS member
453		Span 9	North Truss	L4N Interior	General view of interior north truss Span 9 from L5S south truss
454	33	Span 9	South Truss	L5S to U3S (see Span 9 elevation)	Corrosion in new HSS section, needs immediate attention
455		Span 9	South Truss	U4S to U5N @U4S	Cracked forged eye
456		Span 9	South Truss	U5S to U6S (see Span 9 elevation)	Corrosion in floor grating
457		Span 9	South Truss	U5S to L4S @U5S	Corrosion, holes, deformation in lacing bars
458		Span 9	South Truss	U5S to U4N @U5S	Corrosion in forged eye
459		Span 9	South Truss	U4S to U5S (see Span 9 elevation)	Corrosion in top chord stay plate under scupper, Typ.
460		Span 9	South Truss	L4S	Pack rust in joint
461		Span 9	South Truss	L4S to L5N @L4S	Pack rust in forged eye
462	35	Span 9	South Truss	L4S to U2 S (see Span 9 elevation)	Buckling in angles (Interior)
463	36	Span 9	South Truss	L4S to U2 S (see Span 9 elevation)	Buckling in angles (exterior)
464		Span 9	South Truss	L4S	Pack rust in bottom chord
465	34	Span 9	South Truss	L5S to U3S (see Span 9 elevation)	Corrosion in newer HSS section
466		Span 9	South Truss	L5S to U3S (see Span 9 elevation)	Corrosion in newer HSS section
467		Span 9	South Truss	U3S to U4N @U3S	Cracked forged eye
468		Span 9	South Truss	U4S to U3N @U4S	Pack rust at forged eye
469		Span 9	South Truss	U3S to U4N @U3S	Cracked forged eye, pack rust
470		Span 9	South Truss	L3S	Pack rust in splice plate
471		Span 9	South Truss	L3S to L4N @L3S	Pack rust and corrosion in forged eye
472		Span 9	South Truss	L3S to L2N @L3S	Pack rust and corrosion in forged eye
473		Span 9	South Truss	L3S	Pack rust in bottom chord
474		Span 9	South Truss	U3S to L2S (see Span 9 elevation)	Pack rust in angles
475		Span 9	South Truss	U3S to U2N @U3S	Pack rust in forged eye
476		Span 9	South Truss	U2S to U3N @U2S	Pack rust in forged eye
477		Span 9	South Truss	U2S to U3S (see Span 9 elevation)	Paint failure and corrosion in top chord
478		Span 9	South Truss	L2S	Pack rust in splice plate
479		Span 9	South Truss	L2S to L3N @L2S	Pack rust in forged eye
480		Span 9	South Truss	L2S to L1N @L2S	Pack rust in forged eye
481		Span 9	South Truss	L2S to U3S @L2S	Pack rust in lacing bars, Typ.
482		Span 8	Pier 8	D1 (North East)	General view of bearing from L2S
483		Span 9	South Truss	U2S to U1N @U2S	Deformed eyebar connection plate
484		Span 9	South Truss	U1S to U2N @U1S	Pack rust in forged eye
485		Span 9	South Truss	U2S	Hole in floor beam top flange
486		Span 8	Pier 8	A1 to B4 @B4	Corrosion in pin
487		Span 8	Pier 8	B4 to B1 @B4	Corrosion in lacing bars
488		Span 8	Pier 8	B4 to B2 @B4	Crack in lower forged eye, hole in stay plate
489		Span 8	Pier 8	B4 to C1 @B4	Interior forged eye beginning to crack
490		Span 8	Pier 8	B4 to C3 @B4	Interior forged eye cracked
491		Span 8	Pier 8	B4	Typical corrosion in tower column
492		Span 8	Pier 8	C4 to B2 @C4	Corrosion in pin
493		Span 8	Pier 8	C4 to C1 @C4	Holes in lacing bars
494		Span 8	Pier 8	D4 South Face	Pack rust on external bearing plate
495		Span 8	Pier 8	D4 to C1 @D4	Holes and section loss in tower strut at eyebar penetration point
496		Span 8	Pier 8	D4	Pack rust in Southwest bearing
497		Span 8	Pier 8	D4	Possible crack in bearing pin
498		Span 9	South Truss	L1S to U2S @L1S	Pack rust in interior angles
499		Span 9	South Truss	L1S to L2N @L1S	Cracked forged eye
500		Span 8	Pier 8	D4 (Southeast)	General view of pier 4 Southeast bearing
501		Span 9	South Truss	L0S to U0S	Typical paint failure in column angles
502		Span 9	South Truss	L0S to U0S	Typical paint failure in column angles

File No.	Report Photo Number	Span / Tower	Truss / Pier	Panel Point / Column Location	Description
503		Span 9	South Truss	U0S	Corrosion in plate where top chord meets column tower (interior of top chord)
504		Span 9	South Truss	U0S to U1N @U0S	Pack rust in forged eye, hole on lacing bar
505		Span 9	South Truss	U1S to U0N @U1S	Pack rust in forged eye and top chord stay plate
506		Span 8	Pier 7	B3 to A2 @B3	Corrosion and crack beginning in pin
507		Span 8	Pier 7	B3 to B2	Corrosion in tower strut connection plate
508		Span 8	Pier 7	C3	General condition of oin and eyebars (interior)
509		Span 7	South Truss	L11S	Pack rust in bottom chord
510		Span 7	South Truss	L11 S to L10N @L11S	Pack rust in forged eye
511		Span 7	South Truss	L10S to L11N @L10S	Pack rust in forged eye
512		Span 7	South Truss	L10S to U8S @L10S	Pack rust in interior angles
513		Span 7	South Truss	L10S	Surface rust
514		Span 7	South Truss	U10S to L9S @U10S	Pack rust in angles
515		Span 7	South Truss	U9S to U10S (see Span 7 elevation)	Corrosion and pack rust in top chord bottom stay plate
516		Span 7	South Truss	U10S looking West	General underside Span 7
517		Span 7	South Truss	U10S	Hole in fascia web
518		Span 7	South Truss	U10S to U9N @U10S	Pack rust in forged eye
519		Span 7	South Truss	U9S to U10N @U9S	Pack rust in forged eye
520		Span 7	South Truss	L9S to L10S (see Span 7 elevation)	Paint failure in bottom chord
521		Span 7	South Truss	L9S	Pack rust in bottom chord splice plate
522		Span 7	South Truss	L9S	Rough texture (painted) on most members in bay (*knocked off portion of rough material, previously spilled concrete painted over)
523		Span 7	South Truss	L9S to L10N @L9S	Pack rust in forged eye
524		Span 7	South Truss	L9S to U7S @L9S	Pack rust in interior angles
525		Span 7	South Truss	L9S to L8N @L9S	Pack rust in forged eye
526		Span 7	South Truss	L9S	Typical rough texture on surface (concrete)
527		Span 7	North Truss	L8N	General view of L8N(interior) from L9S
528		Span 7	South Truss	U8S to L10S (see Span 7 elevation)	Typical condition of diagonal
529		Span 7	South Truss	U9S	Corrosion on fascia and floor beam end
530		Span 7	South Truss	U9S to U8N @U9S	Pack rust in forged eye, corrosion on fascia
531		Span 7	South Truss	U8S to U9N @U8S	Pack rust in forged eye
532		Span 7	South Truss	L8S	Typical corrosion
533		Span 7	South Truss	L8S to U6S @L8S	Pack rust in interior angles
534		Span 7	South Truss	L8S to L9N @L8S	Pack rust in forged eye
535		Span 7	South Truss	L8S to L7N @L8S	Pack rust in forged eye
536		Span 7	South Truss	U8S to U7N@U8S	Crack and pack rust in forged eye
537	39	Span 7	South Truss	U7S to U8N@U7S	Crack in forged eye
538		Span 7	South Truss	L7S	Typical bottom chord corrosion
539		Span 7	South Truss	L7S to U5S @L7S	Pack rust in interior angles
540		Span 7	South Truss	L7S to U7N @L7S	Pack rust and corrosion on connection plate
541		Span 7	South Truss	U7S to U6N @U7S	Crack and pack rust in forged eye
542		Span 7	South Truss	U6S to U7N @U6S	Crack and pack rust in forged eye
543		Span 7	South Truss	L6S	Pack rust in bottom chord and angle connection
544		Span 7	South Truss	L6S to L5N @L6S	Pack rust in forged eye, corrosion on pin
545		Span 7	South Truss	L6S to L7N @L6S	Pack rust in forged eye, corrosion on pin
546		Span 7	South Truss	U6S to U5N @U6S	Pack rust in forged eye
547		Span 7	South Truss	U5S to U6N @U5S	Pack rust in forged eye, corroded connection plate, corrosion in top chord stay plate
548		Span 7	South Truss	U5S to U6S (see Span 7 elevation)	Corrosion on fascia bottom angle
549		Span 7	South Truss	L5S to L6S (see Span 7 elevation)	Pack rust in bottom chord splice plate
550	24	Span 7	South Truss	L5S to U3S @L5S	Deformation in angle (possible impact damage)



File No.	Report Photo Number	Span / Tower	Truss / Pier	Panel Point / Column Location	Description
551		Span 7	South Truss	L5S to U3S @L5S	Deformation in angle (possible impact damage)
552		Span 7	South Truss	U5S	Corrosion on top chord
553		Span 7	South Truss	U4S to U5S	Corrosion on fascia stringer
554		Span 7	South Truss	U5S to U4N @U5S	Pack rust in forged eye
555		Span 7	South Truss	L4S to U5S @L4S	Pack rust in interior angles
556		Span 7	South Truss	L4S	Pack rust in bottom chord splice plate
557		Span 7	South Truss	L4S to L3N @L4S	Crack and pack rust in forged eye
558	25	Span 7	South Truss	L5S to U3S @L5S	Deformation in angle (possible impact damage)
559		Span 7	North Truss	L3N	Interior view of north truss from L4S
560		Span 7	South Truss	U4S	Hole in fascia web
561		Span 7	South Truss	U4S to U3N @U4S	Pack rust in forged eye
562		Span 7	South Truss	U3S to U4N @U3S	Corroded connection plate to eyebar
				11/6/2012	
563		Span 7	South Truss	L3S to U4S @L3S	Pack rust in interior angles
564		Span 7	South Truss	L3S to L2N @L3S	Pack rust and corrosion in forged eye and pin
565		Span 7	South Truss	U2S to U3N @U2S	Crack in forged eye
566	26	Span 7	South Truss	U3S to U2N @U3S	Pack rust in forged eye, corrosion in top chord stay plate, hole in floor beam web
567		Span 7	South Truss	U2S to U3S, 2' West of U3S	Deformation in stringer flange
568		Span 7	South Truss	U2S to U3N @U2S	Pack rust in forged eye
569		Span 7	South Truss	L2S to U3S @L2S	Pack rust in interior angles
570		Span 7	South Truss	L2S to L1N @L2S, L2S to U1N @L2S	Pack rust in forged eye, pack rust and corrosion in connection plate for crossmember
571		Span 7	South Truss	L2S	Pack rust in bottom chord splice plate
572		Span 7	South Truss	L2S	Pack rust in bottom chord splice plate (interior)
573		Span 6	Pier 5, 6		General view of pier 3 North bearings from Span 7, L2S
574		Span 7	South Truss	U3S to U2N @U3S	Crack in forged eye
575		Span 7	South Truss	U2S to U3N @U2S	Pack rust in forged eye, pack rust in lacing bars
576		Span 6	Pier 6	B4 to A1 @B4	Crack in forged eye
577		Span 6	Pier 6	A4 to B3 @A4	Pack rust in eye bar pin and plate
578		Span 6	Pier 6	B4 to C3 @B4	Pack rust in eye bar pin and plate
579		Span 6	Pier 6	C4 to B3 @C4, C4 to C2 @C4	Split in both vertical forged eyes, corrosion in both horizontal forged eyes
580		Span 6	Pier 6	C4 to D1 @C4	Corrosion in eye bar pin
581		Span 6	Pier 6	D4 to C1 @D4	Crack in exterior forged eye
582		Span 7	South Truss	L1S to U2S @L1S	Pack rust in interior angles
583		Span 7	South Truss	L1S	Corrosion in eye bar connection plate and pins
584		Span 6	Pier 6	D4	Corrosion on bearing plate
585		Span 6	Pier 6	D4	General top view of bearing
586		Span 7	South Truss	L0S to L0N @L0S	crack in both forged eyes
587		Span 7	South Truss	U0S to L0S (see Span 7 elevation)	Corrosion and section loss in column angles
588		Span 7	South Truss	U0S to U1S (see Span 7 elevation)	Pack rust in top chord bottom stay plate
589		Span 7	South Truss	U1S to U0N @U1S	Pack rust in forged eye
590		Span 7	South Truss	U0S to U1S (see Span 7 elevation)	Corrosion and section loss in top chord interior
591		Span 7	South Truss	U0S to U1S (see Span 7 elevation)	Corrosion and section loss in top chord interior
592		Span 7	South Truss	U0S to U1N @U0S	Pack rust in forged eye, corrosion in panel point
593		Span 6	Pier 5	B3 to B1 @B3	Crack beginning in lower forged eye
594		Span 6	Pier 5	B3 to C2 @B3	Crack in forged eye (external forged eye)
595		Span 6	Pier 5	B3 to C2 @B3	Crack beginning in forged eye (internal forged eye)

File No.	Report Photo Number	Span / Tower	Truss / Pier	Panel Point / Column Location	Description
596		Span 6	Pier 5	C3 to B2 @C3	Crack beginning in interior forged eye, corrosion in pin
597		Span 6	Pier 5	C3 to B2 @C3	Crack beginning in exterior forged eye, corrosion in pin
598		Span 6	Pier 5	D3 to D2 @D3	Paint failure or needed paint at repair
599		Span 5	South Truss	L10S to U8S @L10S	Pack rust in interior angles
600		Span 5	South Truss	L11S to L10N @L11S	Pack rust in forged eye
601		Span 5	South Truss	L10 S to L11N @L10S	Pack rust in forged eye
602		Span 5	South Truss	L10S to L9N @L10S	Pack rust in forged eye
603		Span 5	South Truss	L10S	Pack rust between bottom chord and angles bowing out bottom chord
604		Span 5	North Truss	L9N	General view of interior north truss Span 5 from L10S
605		Span 5	South Truss	L10S	General view of underside Span 5
606		Span 5	South Truss	L11S to U10S (see Span 5 elevation)	Corrosion and section loss in south face of column web
607		Span 5	South Truss	U9S to U10S (see Span 5 elevation)	Pack rust and corrosion in top chord bottom stay plate
608		Span 5	South Truss	U10S to U9N @U10S	Pack rust in forged eye
609		Span 5	South Truss	U9S to U10S (see Span 5 elevation)	Corrosion and section loss in fascia bottom flange
610		Span 5	South Truss	U9S to U10N @U9S	Pack rust in forged eye
611		Span 5	South Truss	L9S	Corrosion and pack rust in bottom chord splice plate
612		Span 5	South Truss	U9S to U8N @U9S	Pack rust in forged eye, corrosion in panel point
613		Span 5	South Truss	U8S to U9N @U8S, U8S to L8N @U8S	Pack rust in forged eye, pack rust in angle nonconnection plate
614		Span 5	South Truss	L8S to U6S @L8S	Pack rust in interior angles
615		Span 5	South Truss	L8S to U6S @L8S	General corrosion in member and lacing bars
616		Span 5	South Truss	U8S to U7N @U8S	Crack and pack rust in forged eye
617		Span 5	South Truss	U8S to U7N @U8S	Crack and pack rust in forged eye
618		Span 5	South Truss	U7S to U8S (see Span 5 elevation)	Corrosion in fascia web
619		Span 5	South Truss	U7S to U8N @U7S	Pack rust in forged eye
620		Span 5	South Truss	L7S	Pack rust and corrosion in bottom chord splice plate
621		Span 5	South Truss	L7S to U5S @L7S	Pack rust in interior angles
622		Span 5	South Truss	L7S to L8N @L7S	Pack rust and corrosion in forged eye and pin
623		Span 5	South Truss	L7S to L6N @L7S	Pack rust and corrosion in forged eye and pin
624		Span 5	South Truss	U7S to U6N @U7S	Pack rust in forged eye
625		Span 5	South Truss	L6S to U6N @L6S	Pack rust in angle connection plate
626		Span 5	South Truss	L6S to L5N @L6S	Pack rust in forged eye
627		Span 5	South Truss	L5S to L6S (see Span 5 elevation)	Pack rust in bottom chord splice plate
628		Span 5	South Truss	U6S to U5N @U6S	Pack rust in forged eye
629		Span 5	South Truss	U5S to U6S (see Span 5 elevation)	Corrosion in top chord stay plate and fascia
630		Span 5	South Truss	U5S to U6N @U5S	Cracked and necked forged eye
631		Span 5	South Truss	L5S to L6N @L5S	Pack rust/thinned forged eye
632		Span 5	South Truss	L5S to L4N @L5S, L5S to U4N @L5S	Pack rust/thinned forged eye, pack rust in crossmember connection plate
633		Span 5	North Truss	L4N	General view of interior North Span 5, from L5S looking west3
634		Span 5	South Truss	U4S to U5N @U4S	Cracked forged eye
635		Span 5	South Truss	L4S to U5S @L4S	Pack rust in interior angles
636		Span 5	South Truss	L4S to L3N @L4S	Corrosion on forged eye and pin
637		Span 5	South Truss	L4S	Pack rust in bottom chord splice plate
638		Span 5	South Truss	U4S to U3N @U4S	Possible crack, pack rust in forged eye
639		Span 5	South Truss	U3S to U4S (see Span 5 elevation)	General corrosion on fascia beam
640		Span 5	South Truss	L3S to L4N @L3S	Pack rust in forged eye
641		Span 5	South Truss	L3S to U4S @L3S	Pack rust in interior angles
642		Span 5	South Truss	L3S to L2N @L3S	Pack rust in forged eye

File No.	Report Photo Number	Span / Tower	Truss / Pier	Panel Point / Column Location	Description
643		Span 5	South Truss	U2S to U3S (see Span 5 elevation)	Corrosion on top chord stay plate
644		Span 5	South Truss	L2S to L3N @L2S	Pack rust in forged eye
645		Span 5	South Truss	L2S to U3S @L2S	Pack rust and hole in interior angles
646		Span 5	South Truss	L2S to L1N @L2S	Pack rust in forged eye
647		Span 5	South Truss	L2S	Pack rust in bottom chord splice plate
648		Span 5	South Truss	L2S	Pack rust in bottom chord splice plate (top view)
649		Span 4	Pier 3, 4	North Bearings	General shot of pier 2 North bearings, from Span 5, L2S looking West
650		Span 5	South Truss	U1S to U2N @U1S	Cracked forged eye, pack rust
651		Span 5	South Truss	U1S to U2N @U1S	Cracked forged eye, pack rust
652		Span 5	South Truss	U1S to U2S (see Span 5 elevation)	Corrosion on fascia bottom flange
653		Span 4	Pier 4	B4 to A3 @B4	Crack in exterior forged eye
654		Span 4	Pier 4	B4 to C3 @B4	Severe section loss in pin
655		Span 4	Pier 4	B4 to C3 @B4	Severe section loss in pin, pack rust
656		Span 4	Pier 4	C4 to B1 @C4	Forged eye beginning to crack
657		Span 4	Pier 4	C4 to C1 @C4	Bottom stay plate disconnected
658		Span 4	Pier 4	C4 to C2 @C4	Top forged eye thinned
659		Span 4	Pier 4	D4, South face	Heavy corrosion on interior
660		Span 4	Pier 4	D4, West face	Corrosion on bearing
661		Span 5	South Truss	L1S to L0N @L1S	Pack rust in forged eye
662		Span 5	South Truss	L1S to U2S @L1S	Pack rust in interior angles
663		Span 5	South Truss	L1S to L2N @L1S	Pack rust in forged eye
664		Span 5	South Truss	L0S to U1S @L0S	Pack rust in interior angles
665		Span 5	South Truss	L2S to U0S (see Span 5 elevation)	Corrosion and section loss in angle
666		Span 5	South Truss	U0S to U1S (see Span 5 elevation)	Pack rust in top chord bottom stay plate
667		Span 5	South Truss	L0S to U0S @U0S	Hole in column web, west side
668		Span 5	South Truss	U0S to U1S (see Span 5 elevation)	Sever section loss (rivets at 4.5" O.C.)
669		Span 5	South Truss	U0S to U1S (see Span 5 elevation)	Sever section loss (rivets at 4.5" O.C.)
670		Span 5	South Truss	U1S to U0N @U1S	Pack rust in forged eye
671		Span 5	South Truss	U0S to U1N @U0S	Pack rust in forged eye
672		Span 4	Pier 3	A3 to B4 @A3	Cracked pin and forged eye, deformed top plate
673		Span 4	Pier 3	A3 to B4 @A3	Cracked pin and forged eye, deformed top plate
674	48	Span 4	Pier 4	A4, East face	Crack in masonry under bearing
675		Span 4	Pier 4	A4 to B3 @A4	Pack rust in connection plate crack forming in forged eyes
676	50	Span 4	Pier 4	A1, North face	Crack in bearing (previously repaired)
677		Span 4	Pier 4	A1, North face	Crack in bearing (previously repaired)
678		Span 4	Pier 4	A1 to B2 @A1	Pack rust in forged eyes and plate
679		Span 2	Pier 2	A1 to B2 @A1	Cracked pin
680		Span 2	Pier 2	A1 to A2 @A1	Corrosion and hole in bottom chord stay plate (Interior)
681		Span 2	Pier 2	A2 to A1 @A2	Corrosion and hole in bottom chord stay plate (Interior)
682		Span 2	Pier 1	A2 to A3, 12' North of A2	Corroded lacing bars
683		Span 2	Pier 1	A2 to A3, 12' North of A3	Corroded lacing bars
684	51	Span 2	Pier 1	A3 to A2 @A3	Corrosion and hole in bottom chord stay plate (Interior)
685		Span 2	Pier 1	A3	Debris buildup on bearing
686		Span 2	Pier 1	A3 to A4 @A3	Corrosion and hole in bottom chord stay plate (Interior)
687		Span 2	Pier 2	A4	Corrosion on South face of bearing
688		Span 2	Pier 2	A4 to A3 @A4	Corrosion and hole in bottom chord stay plate (Interior)
689		Span 2	Pier 2	A4 to A1 @A4	Corrosion and hole in bottom chord stay plate (Interior)
690		Span 4	Pier 3	B3 to A2 @B3	Thinning and corroded eyebar
691		Span 4	Pier 3	B3 to A4 @B3	Corroded eyebar



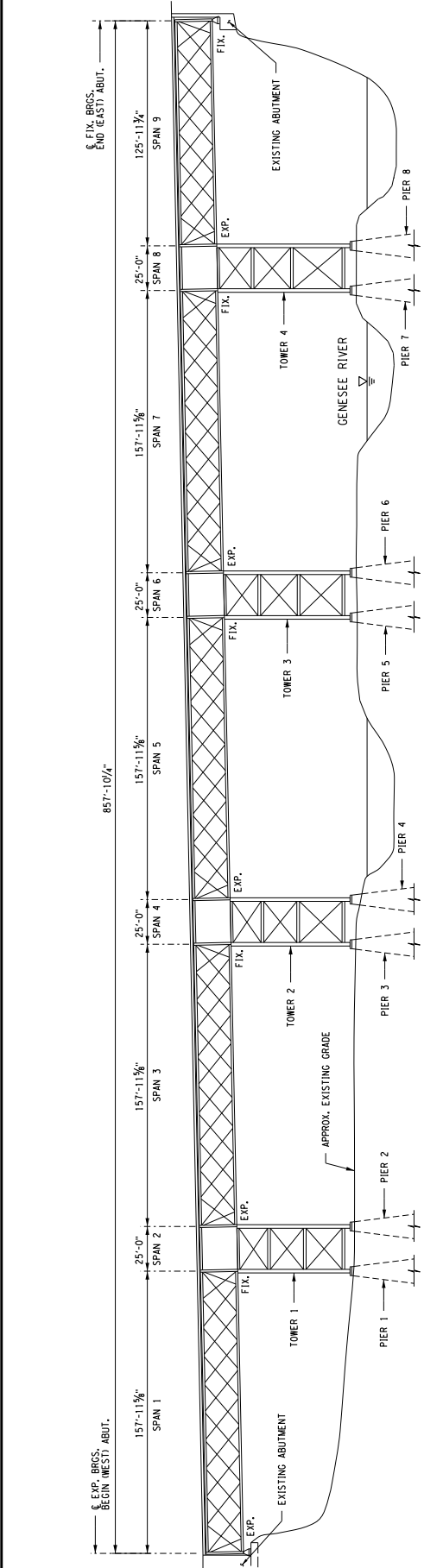
File No.	Report Photo Number	Span / Tower	Truss / Pier	Panel Point / Column Location	Description
692		Span 4	Pier 3	C3 to B2 @C3	Corroded forged eye and pin
693		Span 3	South Truss	L10S to U8S @L10	Pack rust in interior angles
694		Span 3	South Truss	L10S to L11N @L10S	Pack rust in forged eye
695		Span 3	South Truss	L10S to L9N @L10S	Pack rust in forged eye
696		Span 4	Pier 3	D3, West face	General view of bearing and pack rust
697		Span 3	South Truss	U10S to U9N @U10S	Pack rust in forged eye
698		Span 3	South Truss	U10S	Corrosion, holes on fascia web
699		Span 3	South Truss	U9S to U10N @U9S	Pack rust in forged eye
700		Span 3	South Truss	L9S	Pack rust in bottom chord splice plate
701		Span 3	South Truss	L9S to L10N @L9S	Pack rust in forged eye
702		Span 3	South Truss	L9S to L8N @L9S	Pack rust in forged eye, thinned
703		Span 3	South Truss	L9S to U7S @L9S	Pack rust in interior angles
704		Span 3	South Truss	L9S	Pack rust in bottom chord splice plate
705		Span 3	North Truss	L9N	General view of Span 3 interior North truss, from L9S looking west
706	21	Span 3	South Truss	L10S to U8S (see Span 3 elevation)	Holes in lacing bars
707		Span 3	South Truss	U9S to L11S @U9S	Pack rust in interior angles
708	22	Span 3	South Truss	U9S	Holes and corrosion in fascia web
709		Span 3	South Truss	U9S to U8N @U9S	Pack rust in forged eye
710		Span 3	South Truss	U8S to U9N @U8S	Pack rust in forged eye
711		Span 3	South Truss	L8S to U6S @L8S	Pack rust in interior angles
712		Span 3	South Truss	U8S to U7N @U8S	Thinned eyebar connection plate
713		Span 3	South Truss	U7S to U8N @U7S	Pack rust in forged eye
714		Span 3	South Truss	L7S to U5S @L7S	Pack rust in interior angles
715		Span 3	South Truss	L7S to U7N @L7S	Corrosion, pack rust and hole in crossmember connection plate
716	38	Span 3	South Truss	U6S to U7N @U6S	Crack in forged eye
717		Span 3	South Truss	U7S to U6N @U7S	Pack rust in forged eye
718		Span 3	South Truss	U6S to U7S (see Span 3 elevation)	Corrosion and section loss in fascia stringer
719		Span 3	South Truss	U6S to U7N @U6S	Pack rust and crack in forged eye
					11/8/2012
720		Span 3	South Truss	L6S to L7N @L6S	Pack rust, thinned forged eye
721		Span 3	South Truss	L6S to L5N @L6S	Pack rust, thinned forged eye
722		Span 3	South Truss	U6S to U5N @U6S	Crack and pack rust in forged eye
723		Span 3	South Truss	U6S to U5N @U6S	Crack and pack rust in forged eye, Pitting in top chord at U6S
724		Span 3	South Truss	U5S to U6S (see Span 3 elevation)	Corrosion on fascia bottom flange
725		Span 3	South Truss	U5S to U6N @U5S, U5S to U5N @U5S	Crack and pack rust in forged eye, corrosion on floor beam bottom flange
726		Span 3	South Truss	U5S	Fascia not connected to floor stringer
727		Span 3	South Truss	L5S to U6S	Slight buckle in angle
728		Span 3	South Truss	L5S to L6N @L5S	Crack and pack rust in forged eye
729		Span 3	South Truss	L5S to U4N @L5S	Pack rust in connection plate
730		Span 3	North Truss	L4N	General view of interior north truss, Span 3 looking west from L5S
731		Span 3	South Truss	L5S	General underside view of Span 3, looking west from L5S
732		Span 3	South Truss	U5S to U4N @U5S	Crack and pack rust in forged eye
733		Span 3	South Truss	U4S to U5N @U4S	Thinned forged eye (less than 1/4" remaining)
734		Span 3	South Truss	L4S to L5N @L4S	Corrosion and pack rust in forged eye and pin
735		Span 3	South Truss	L4S to U5S @L4S	Pack rust in interior angles
736		Span 3	South Truss	L4S to L3N @L4S, L4S to U5N @L4S	Corrosion in forged eye pin, pack rust in diagonal member connection
737		Span 3	South Truss	L4S	Corrosion in bottom chord splice plate
738		Span 3	South Truss	U4S to U3N @U4S	Thinned forged eye
739		Span 3	South Truss	U3S to U4N @U3S, U3S to L4N @U3S	Deformed eyebar connection plate, pack rust in diagonal member connection
740		Span 3	South Truss	U4S	Corrosion and hole in fascia web, Typ.

File No.	Report Photo Number	Span / Tower	Truss / Pier	Panel Point / Column Location	Description
741		Span 3	South Truss	L3S to U4S @L3S	Pack rust and holes in interior angles
742		Span 3	South Truss	L3S to L4N @L3S	Pack rust in forged eye, thinned top plate
743		Span 3	South Truss	L3S to L2N @L3S	Pack rust in forged eye, thinned top plate
744		Span 3	South Truss	U2S to U3N @U2S	Crack and pack rust in forged eye
745		Span 3	South Truss	U3S to L4N @U3S	Pack rust in connection plate
746		Span 3	South Truss	U2S to U3N @U2S, U2S to L3N @U2S	Pack rust in forged eye, thinned top plate, pack rust in diagonal member connection plate
747		Span 3	South Truss	U2S	Fascia not connected to floor stringer
748		Span 3	South Truss	L2S to L3N @L2S	Pack rust in forged eye
749		Span 3	South Truss	L2S to U3S @L2S	Pack rust in interior angles
750		Span 3	South Truss	L2S to L1N @L2S	Crack and pack rust in forged eye
751		Span 3	South Truss	L2S	Pack rust and corrosion in bottom chord splice plate
752		Span 2	Pier 1	D1, D2	General view of Pier 1 North bearings from L2S
753		Span 3	South Truss	U2S to U1N @U2S	Pack rust in forged eye
754		Span 3	South Truss	U1S to U2N @U1S, U1S to L2N @U1S	Pack rust in forged eye, pack rust in diagonal member connection
755		Span 3	South Truss	U1S, U1S to U1N	Fascia not connected to floor stringer, hole in floor beam web
756		Span 2	Pier 2	B4 to A1 @B4	Corrosion on pin
757		Span 2	Pier 2	B4 to B3 @B4	Pack rust in bottom stay plate
758		Span 2	Pier 2	B4 to B1 @B4	Pack rust in bottom stay plate
759		Span 2	Pier 2	B4 to C3 @B4	Pack rust in connection plate and pin
760		Span 2	Pier 2	C4 to B3 @C4	Pack rust in connection plate and pin
761		Span 2	Pier 2	C4 to B1 @C4	Cracked forged eye, corrosion on pin
762		Span 2	Pier 2	C4 to D1 @C4	Cracked exterior forged eye, pack rust in pin
763	52	Span 2	Pier 2	C4 to C2 @C4, C4 to D3 @C4	Cracked forged eye, pack rust on connection pin, vertical member has pack rust on connection pin
764	53	Span 2	Pier 2	C4 to D3 @C4	Cracked forged eye
765		Span 2	Pier 2	D4 below D4 to D1	Pack rust in brace
766		Span 2	Pier 2	D4, South face	Corrosion on interior of column under bearing
767		Span 3	South Truss	L1S to U2S @L1S	Pack rust in interior angles
768		Span 3	South Truss	L1S to L0N @L1S	Pack rust in forged eye
769		Span 3	South Truss	L0S to L1N @L0S	Pack rust in forged eye
770		Span 2	Pier 2	D4, East face	General view of bearing
771	46	Span 2	Pier 2	D4, North Face	Crack through pin bearing plate
772	47	Span 2	Pier 2	D4, North Face	Crack through pin bearing plate
773		Span 3	South Truss	L0S to U0N @L0S	Corrosion on pin
774		Span 2	Pier 2	D1, South Face	Crack in pin bearing plate
775		Span 3	South Truss	U1S to U0N @U1S	Pack rust in forged eye
776		Span 3	South Truss	U0S to U1N @U0S	Pack rust in forged eye
777		Span 2	South Truss	Truss over pier 1	Bowed fascia stringer
778		Span 3	South Truss	U0S to U1S (see Span 3 elevation)	Hole in top chord (interior)
779		Span 3	South Truss	U1S	Fascia to floor stringer not bolted (also at U0S, not shown)
780		Span 1	Pier 1	B3 to C4 @B3	Cracked exterior forged eye, pack rust in connection plate
781		Span 1	Pier 1	B3 to B1 @B3	Section loss in top forged eye
782		Span 1	Pier 1	B3 to C2 @B3	Corrosion in pin
783		Span 1	Pier 1	C3 to B4 @C3	Cracked exterior forged eye
784		Span 1	South Truss	L10S to L11N @L10S	Pack rust in forged eye
785		Span 1	South Truss	L10S to U10S @L10S	Pack rust in interior angles
786		Span 1	South Truss	L10S to L9N @L10S	Pack rust in forged eye
787		Span 2	South Truss	Truss over pier 1	Bowed fascia stringer
788		Span 1	South Truss	L10S	Corrosion on eyebar connection plate

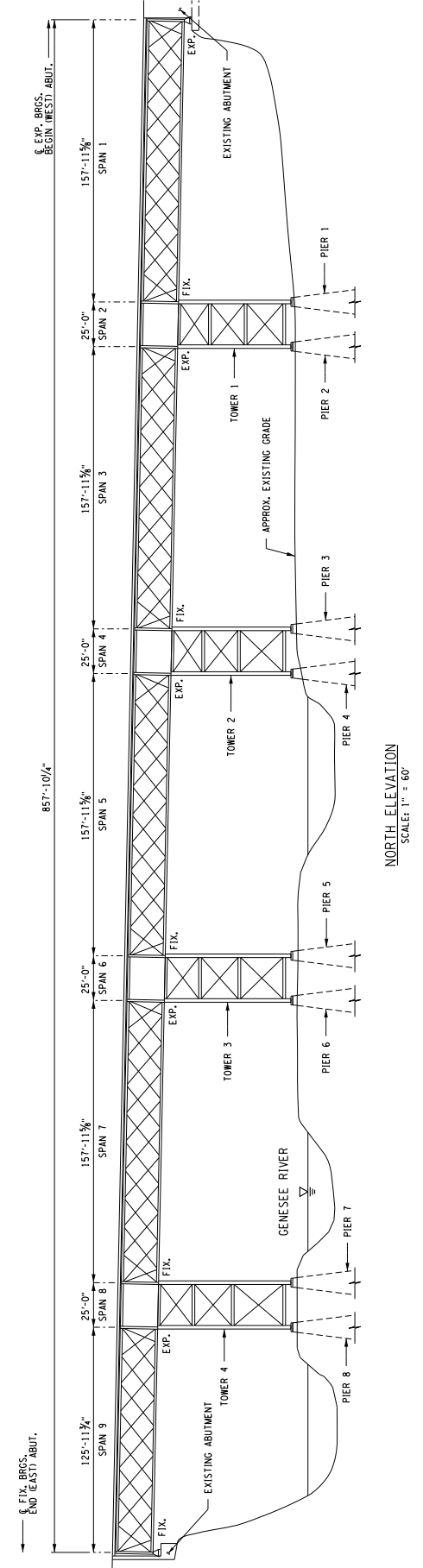
File No.	Report Photo Number	Span / Tower	Truss / Pier	Panel Point / Column Location	Description
789		Span 1	North Truss	L10N	General view of interior of North truss, from L10S looking West
790		Span 1		L10S	General Underside of span 1 from L10S looking West
791	19	Span 2	South Truss	Truss over pier 1	Bowed fascia stringer
792	18	Span2	South Truss	Truss over pier 1	Bowed fascia stringer
793		Span 1	South Truss	U10S to U9N @U10S	Pack rust in forged eye
794		Span 1	South Truss	U9S to U10S (see span 1 elevation)	Deformation in top chord
795		Span 1	South Truss	U9S to U10N @U9S	Pack rust in forged eye
796		Span 1	South Truss	L9S to L10N @L9S	Pack rust in forged eye
797		Span 1	South Truss	L9S to U7S @L9S	Pack rust in interior angles
798		Span 1	South Truss	L9S to L8N @L9S	Pack rust in pin at forged eye
799		Span 1	South Truss	L9S	Pack rust in bottom chord splice plate
800		Span 1	South Truss	U10S	Pack rust in top chord bottom stay plate
801		Span 1	South Truss	U8S to U9S (see span 1 elevation)	Top chord bottom stay plate disconnected
802	11	Span 1	South Truss	U8S to U9S (see span 1 elevation)	Top chord bottom stay plate disconnected
803		Span 1	South Truss	U9S to U8N @U9S	Pack rust in forged eye
804		Span 1	South Truss	U8S to U9N @U8S	Pack rust in forged eye
805		Span 1	South Truss	L8S to L9N @L8S	Pack rust in forged eye
806	12	Span 1	South Truss	L8S to U6S @L8S	Pack rust in interior angles
807		Span 1	South Truss	L8S to L7N @L8S	Crack and pack rust in forged eye
808		Span 1	South Truss	U8S to U7N @U8S, U8S	Pack rust in forged eye, paint failure in top chord
809		Span 1	South Truss	U7S	Section loss and corrosion at previously repaired top chord stay plate
810		Span 1	South Truss	U7S to U8N @U7S	Pack rust in forged eye
811		Span 1	South Truss	L7S	Pack rust in bottom chord splice plate
812		Span 1	South Truss	L7S to U5S @L7S	Pack rust in interior angles
813		Span 1	South Truss	L7S to L8N @L7S, L7S to U7N @L7S	Pack rust in forged eye, pack rust in crossmember connection plate
814		Span 1	South Truss	L7S to L6N @L7S	Pack rust in forged eye, pack rust in crossmember connection plate
815		Span 1	South Truss	U7S to U8N @U7S	Crack and pack rust in forged eye
816		Span 1	South Truss	U6S to U7N @U6S	Crack and pack rust in forged eye
817		Span 1	South Truss	U6S to U7S (see span 1 elevation)	Corrosion and section loss in top chord stay plate
818		Span 1	South Truss	L6S to L7N @L6S, L6S to U6N @L7S	Crack in forged eye, pack rust in diagonal member connection
819		Span 1	South Truss	L5S to L6S (see span 1 elevation)	Pack rust in bottom chord splice plate
820		Span 1	South Truss	U6S to U5N @U6S	Cracked forged eye
821		Span 1	South Truss	U5S to U6N @U5S	Pack rust in forged eye, thinned
822		Span 1	South Truss	L5S to L6N @L5S	Pack rust in forged eye
823		Span 1	North Truss	L4N	General view of span 1 North truss interior from L5S looking west
824		Span 1	South Truss	U5S to U4N @U5S	Pack rust/ corroded bottom eyebar connection plate
825		Span 1	South Truss	U5S to U4N @U5S	Pack rust/ corroded bottom eyebar connection plate
826		Span 1	South Truss	U5S	Corrosion and hole in fascia
827		Span 1	South Truss	U4S	Corrosion and hole in fascia
828		Span 1	South Truss	U4S to U5N @U4S	Pack rust in forged eye
829		Span 1	South Truss	L4S to L5N @L4S	Pack rust in forged eye
830		Span 1	South Truss	L4S to U5S @L4S	Pack rust in interior angles
831		Span 1	South Truss	L4S to L3N @L4S	Pack rust in forged eye
832		Span 1	South Truss	L4S	Pack rust in splice plate
833		Span 1	South Truss	U4S to U3N @U4S	Cracked forged eye
834		Span 1	South Truss	U3S to U4N @U3S	Cracked forged eye
835		Span 1	South Truss	U3S to U4S	Corrosion in floor stringer
836		Span 1	South Truss	U4S to U3N @U4S	Cracked forged eye, pack rust



File No.	Report Photo Number	Span / Tower	Truss / Pier	Panel Point / Column Location	Description
837	37	Span 1	South Truss	U3S to U4N @U3S, U3S to L4N @U3S	Crack and pack rust in forged eye, crossmember connection plate fully corroded
838		Span 1	South Truss	L3S to L4N @L3S	Pack rust in forged eye
839		Span 1	South Truss	L3S to U4S @L3S	Pack rust in interior angles
840		Span 1	South Truss	L3S to L2N @L3S	Pack rust in forged eye
841		Span 1	South Truss	U3S to U2N @U3S	Crack and pack rust in forged eye
842		Span 1	South Truss	U3S to U2N @U3S	Crack and pack rust in forged eye
843		Span 1	South Truss	U3S	Holes in fascia stringer
844		Span 1	South Truss	U2S to U3N @U2S	Pack rust in forged eye
845		Span 1	South Truss	U2S	Holes in fascia stringer
846		Span 1	South Truss	L2S to L3N @L2S	Pack rust in forged eye
847		Span 1	South Truss	L2S to U3S @L2S	Pack rust in interior angles
848		Span 1	South Truss	L2S to L1N @L2S	Pack rust in forged eye
849		Span 1	South Truss	L2S	Pack rust in bottom chord splice plate
850		Span 1	South Truss	L2S	Pack rust and section loss in bottom chord splice plate
851		Span 1	North Truss	L0N	North begin abutment bearing and column from L2S
852		Span 1	South Truss	U2S	Pack rust in top chord stay plate
853	13	Span 1	South Truss	U2S	Holes in fascia stringer
854		Span 1	South Truss	U2S to U1N @U2S	Pack rust in forged eye
855		Span 1	South Truss	U1S to U2N @U1S	Pack rust in forged eye
856	14	Span 1	South Truss	U2S	General condition of floor stringers in span 1, bay 2
857		Span 1	South Truss	L1S to L2N @L1S	Pack rust in forged eye
858		Span 1	South Truss	L1S to L0N @L1S	Pack rust in forged eye
859		Span 1	South Truss	L0S	Begin South bearing
860		Span 1	South Truss	L0S	Begin South bearing, backside
861		Span 1	South Truss	U0S	General underside view of U0S from L0S
862		Span 1	South Truss	L0S	Begin South bearing, North face
863		Span 1	South Truss	L0S to L1N @L0S	Pack rust in forged eye
864		Span 1	South Truss	L0S to U0S	Section loss in angle
865		Span 1	South Truss	U0S to U1S	Top chord no longer straight due to repair
866	15	Span 1	South Truss	U0S to U0N	Flange loss in begin abutment floor beam
867		Span 1	South Truss	U1S	Hole in fascia stringer
868		Span 1	South Truss	U1S to U0N @U1S	Pack rust in forged eye
869	16	Span 1	South Truss	U0S to U1N @U0S	Pack rust in forged eye, typical deterioration at begin floor beam
870	17	Span 1	South Truss	U0S to U0N	Hole in begin abutment floor beam, typical deterioration



**SOUTH ELEVATION**  
SCALE: 1" = 60'



**NORTH ELEVATION**  
SCALE: 1" = 60'

LEGEND:  
⊗ DENOTES PHOTO NUMBER

NO. 1 2 3 4 5 6 7 8 9 10 11 12 13 14 15 16 17 18 19 20 21 22 23 24 25 26 27 28 29 30 31 32 33 34 35 36 37 38 39 40 41 42 43 44 45 46 47 48 49 50 51 52 53 54 55 56 57 58 59 60 61 62 63 64 65 66 67 68 69 70 71 72 73 74 75 76 77 78 79 80 81 82 83 84 85 86 87 88 89 90 91 92 93 94 95 96 97 98 99 100

BY DATE

300 STATE STREET  
ROCHESTER, NY 14614  
P: (585) 454-0069  
F: (585) 454-0068  
WWW.LABELA.COM

**LABELA**  
Associates, P.C.

PONT DE RENNES PEDESTRIAN  
BRIDGE OVER GENESEE RIVER  
DETAILED INSPECTION  
BIN 2211290  
CITY OF ROCHESTER DEPARTMENT  
OF ENVIRONMENTAL SERVICES

PROJECT TITLE

BRIDGE ELEVATIONS

REPORT

DESIGNED BY: [ ]

REVIEWED BY: [ ]

DATE: NOVEMBER 2012

NO.	SECTION	BY	DATE
1			
2			
3			
4			
5			
6			

300 STATE STREET  
ROCHESTER, NY 14614  
P: (585) 454-0600  
F: (585) 454-0600  
www.abellapc.com

**ABELLA**  
Associates, P.C.

PROJECT NO. 212766  
PROJECT NAME: BRIDGE OVER GENESEE RIVER  
PROJECT LOCATION: BIN 2211290  
PROJECT DESCRIPTION: DETAIL INSPECTION

DATE: NOVEMBER 2012  
REPORT  
DESIGNED BY:  
CHECKED BY:  
REVIEWED BY:

PONT DE RENNES PEDESTRIAN  
BRIDGE OVER GENESEE RIVER  
BIN 2211290  
CITY OF ROCHESTER DEPARTMENT  
OF ENVIRONMENTAL SERVICES

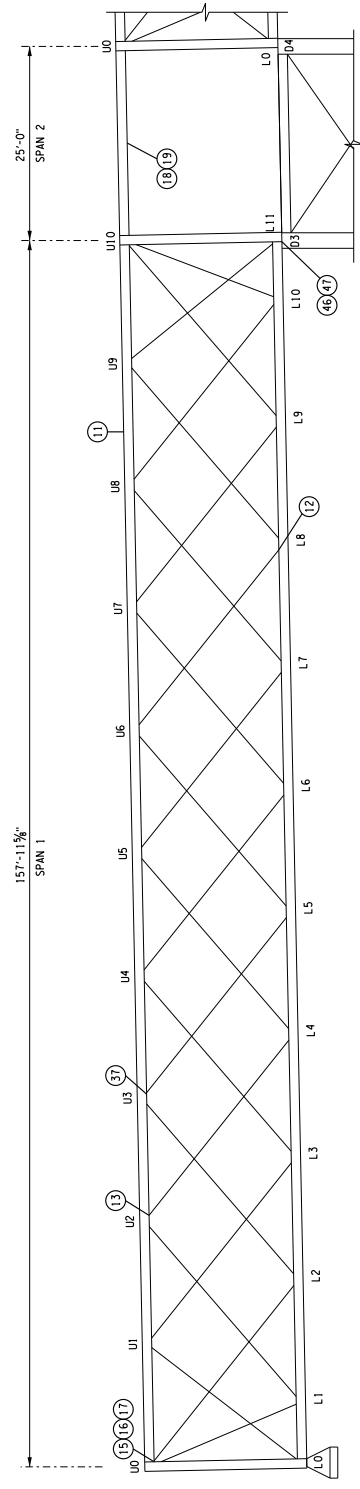
PROJECT DRAWING NUMBER  
**212766**

**P-2**  
SHEET 05

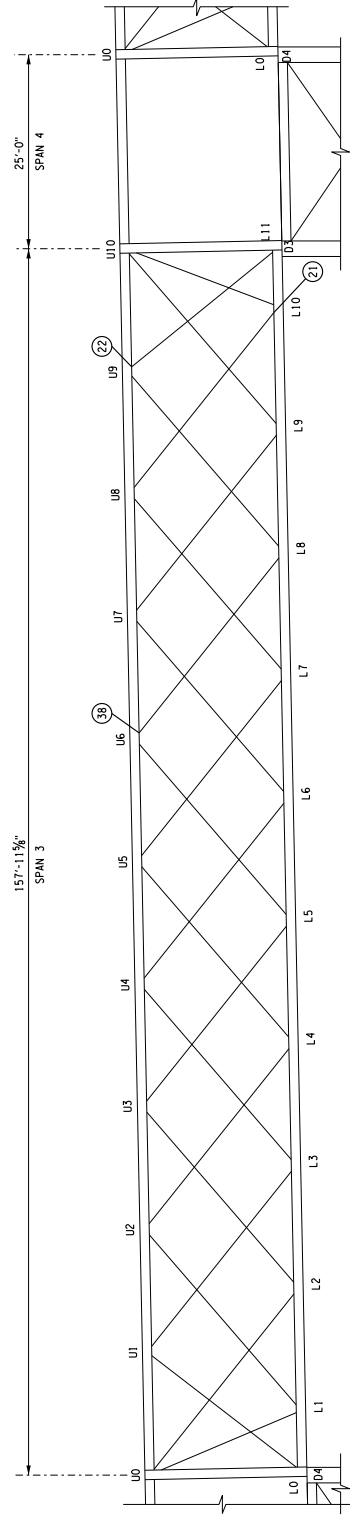
RIGHT TRUSS ELEVATIONS  
SPAN 1 THRU 4

DATE: NOVEMBER 2012  
REPORT  
DESIGNED BY:  
CHECKED BY:  
REVIEWED BY:

NO.	SECTION	BY	DATE
1			
2			
3			
4			
5			
6			



SPANS 1 & 2 RIGHT TRUSS (SOUTH ELEVATION)  
SCALE: 1/8" = 1'-0"



SPANS 3 & 4 RIGHT TRUSS (SOUTH ELEVATION)  
SCALE: 1/8" = 1'-0"

LEGEND:  
(NO.) DENOTES PHOTO NUMBER



NO.	SECTION	BY	DATE
1			
2			
3			
4			
5			
6			

**LABELLA**  
Associates, P.C.

300 STATE STREET  
ROCHESTER, NY 14614  
P: (585) 454-0110  
F: (585) 454-0069  
www.labella.com  
LABORATORY 2013

PROJECT: PONT DE RENNES PEDESTRIAN  
BRIDGE OVER GENESEE RIVER  
DETAILED INSPECTION  
BIN 2211290  
CITY OF ROCHESTER DEPARTMENT  
OF ENVIRONMENTAL SERVICES

DRAWING TITLE	
RIGHT TRUSS ELEVATIONS SPAN 5 THRU 8	
DESIGNED BY:	REVIEWED BY:
DATE: NOVEMBER 2012	REPORT

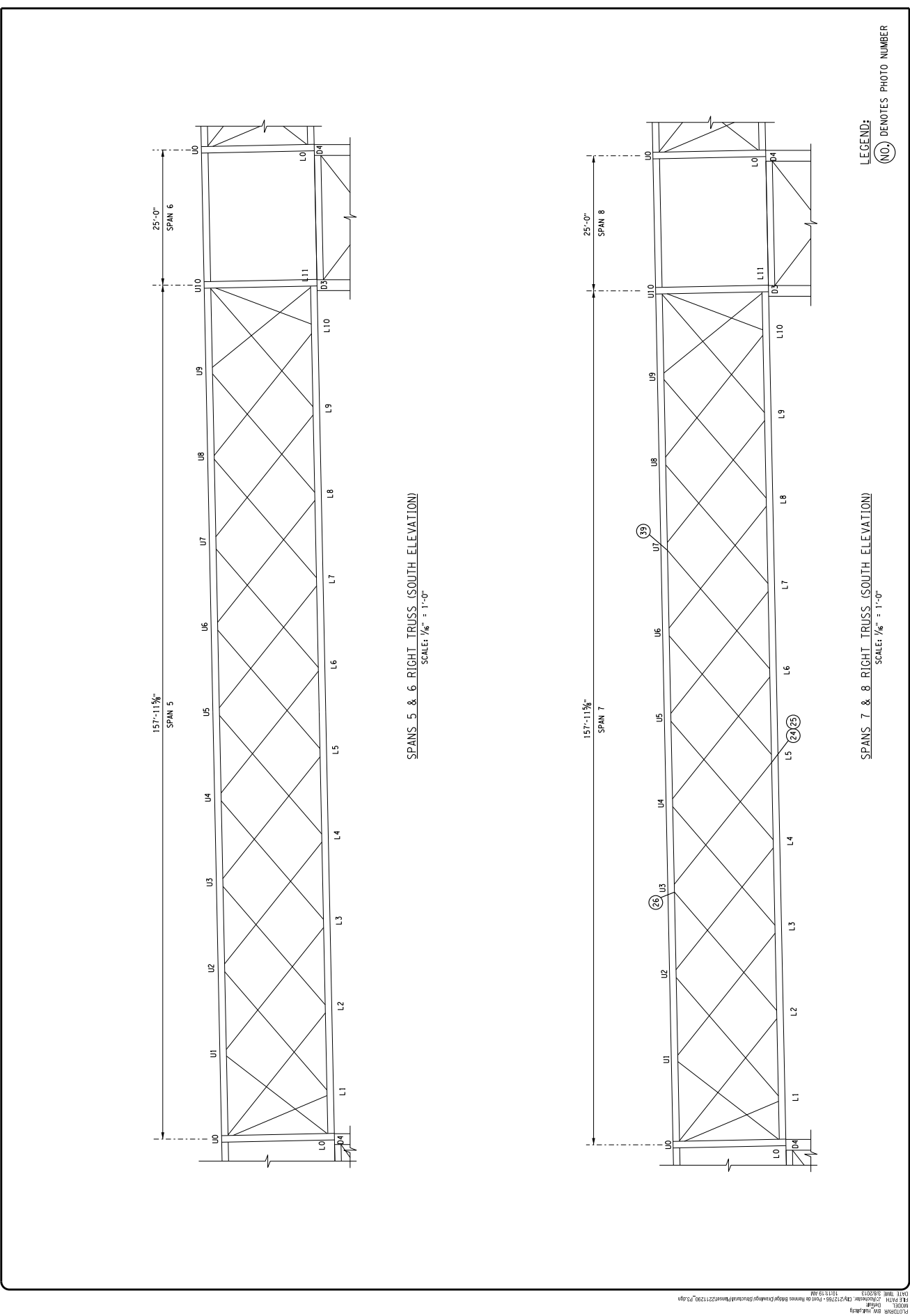
212766

P-3

15

PRODUCT DRAWING NUMBER

SHEET



NO.	SECTION	BY	DATE
1			
2			
3			
4			
5			
6			

300 STATE STREET  
ROCHESTER, NY 14614  
P: (585) 454-0666  
F: (585) 454-0666  
www.abella.com

**ABELLA**  
Associates, P.C.

CONTRACT NO. 2011-001  
NEW YORK STATE  
DEPARTMENT OF  
TRANSPORTATION  
DIVISION OF  
HIGHWAYS

PROJECT NO. 2211290  
BIN 2211290  
BRIDGE OVER GENESEE RIVER  
DETAILED INSPECTION  
CITY OF ROCHESTER DEPARTMENT  
OF ENVIRONMENTAL SERVICES

PROJECT NAME  
PONT DE RENNES PEDESTRIAN  
BRIDGE OVER GENESEE RIVER

PROJECT NO.  
BIN 2211290

PROJECT LOCATION  
CITY OF ROCHESTER DEPARTMENT  
OF ENVIRONMENTAL SERVICES

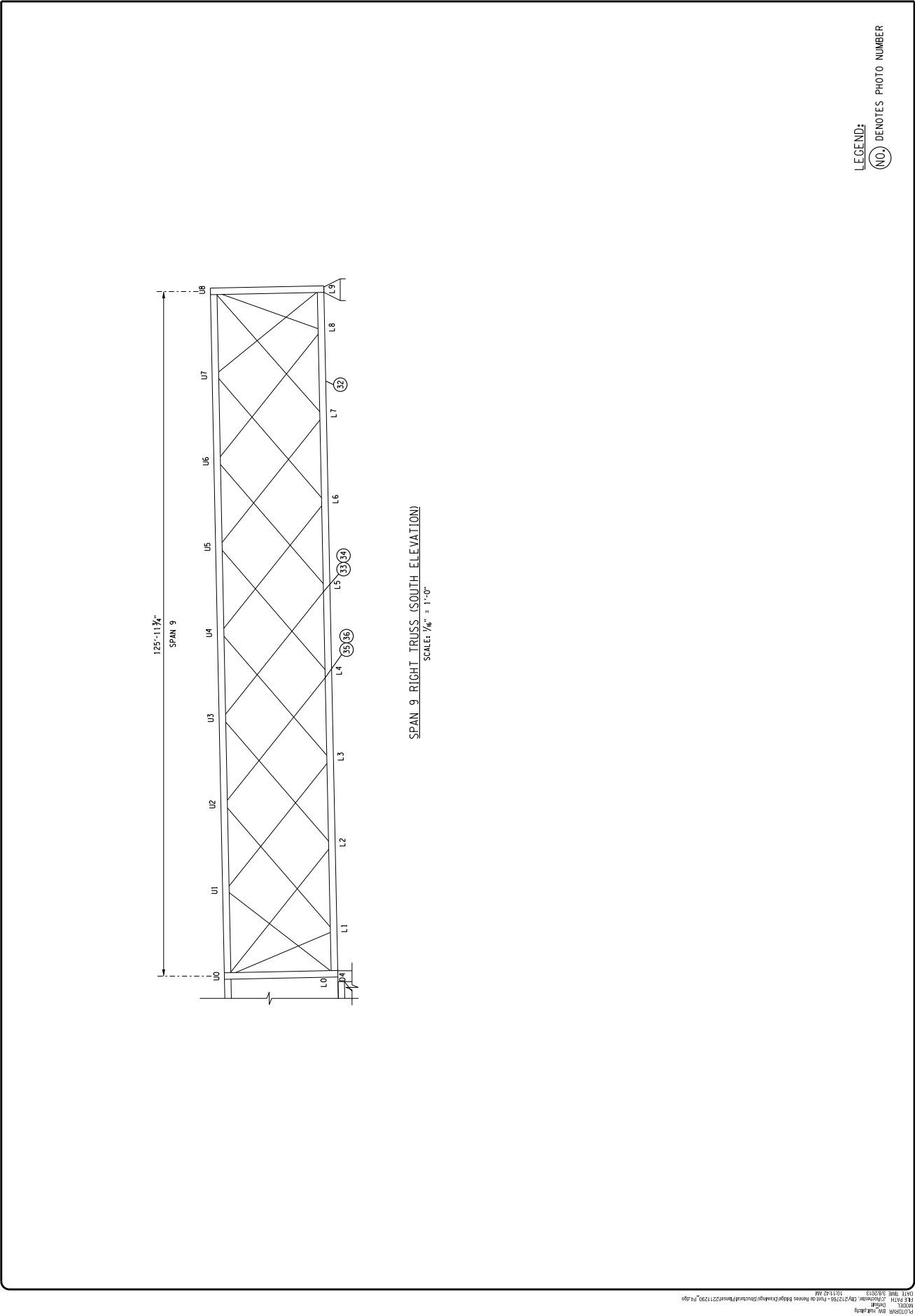
DATE: NOVEMBER 2012  
REVIEWED BY:  
DESIGNED BY:  
CHECKED BY:

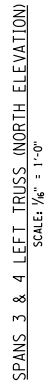
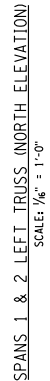
REPORT

RIGHT TRUSS ELEVATIONS  
SPAN 9

PRODUCT DRAWING NUMBER  
212766

P-4  
SHEET OF





LEGEND:

NO.	SECTION	BY	DATE
1			
2			
3			
4			
5			
6			

**LABELLA**  
Associates, P.C.

300 STATE STREET  
ROCHESTER, NY 14614  
P: (585) 454-0669  
F: (585) 454-0669  
www.labella.com

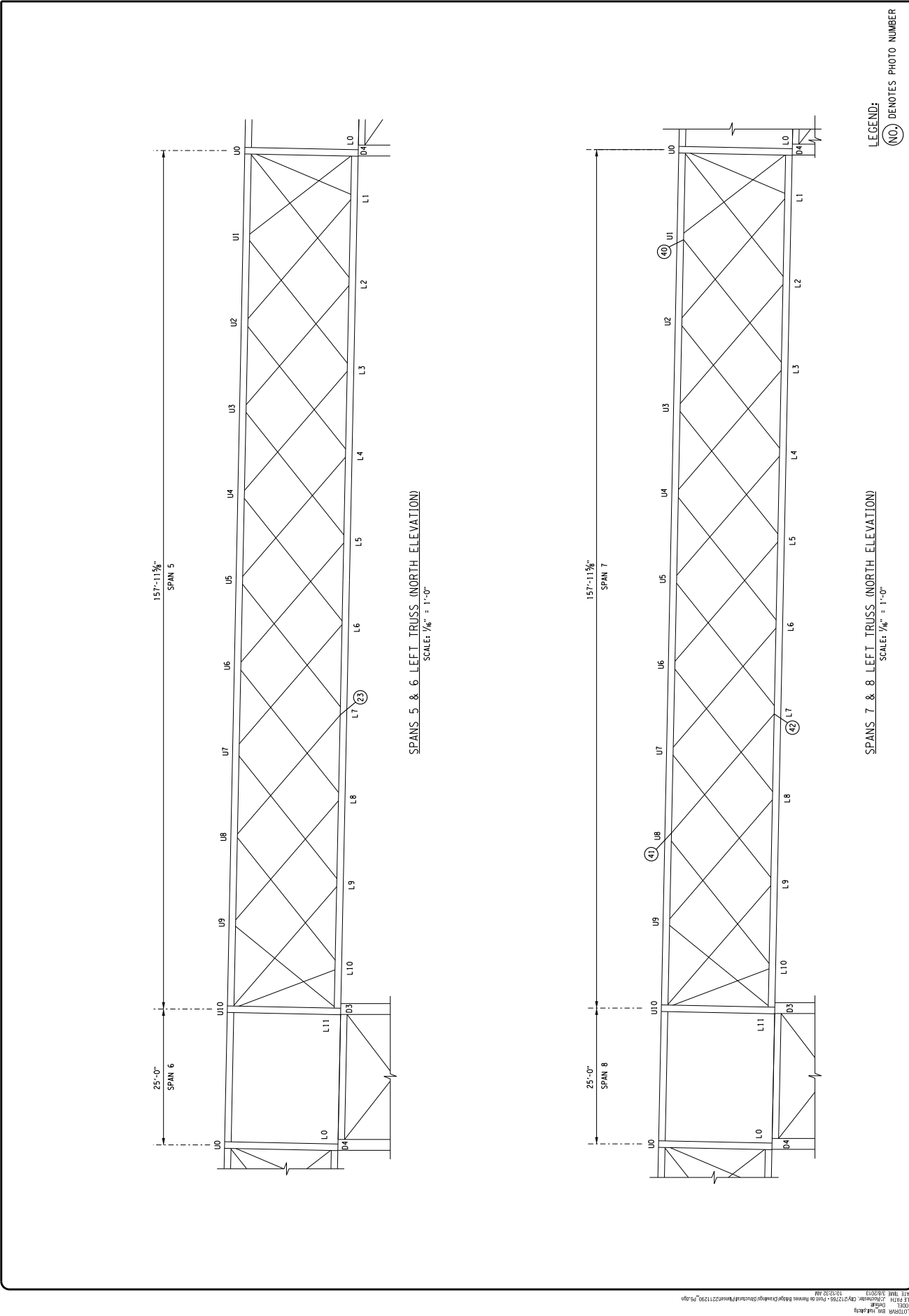
PROJECT: PONT DE RENNES PEDESTRIAN  
BRIDGE OVER GENESEE RIVER  
BIN 2211290  
CITY OF ROCHESTER DEPARTMENT  
OF ENVIRONMENTAL SERVICES  
PROJECT NO. 2211290

DRAWING TITLE	
LEFT TRUSS ELEVATIONS SPAN 5 THRU 8	
DESIGNED BY:	REPORT
CHECKED BY:	
REVIEWED BY:	
DATE: NOVEMBER 2012	

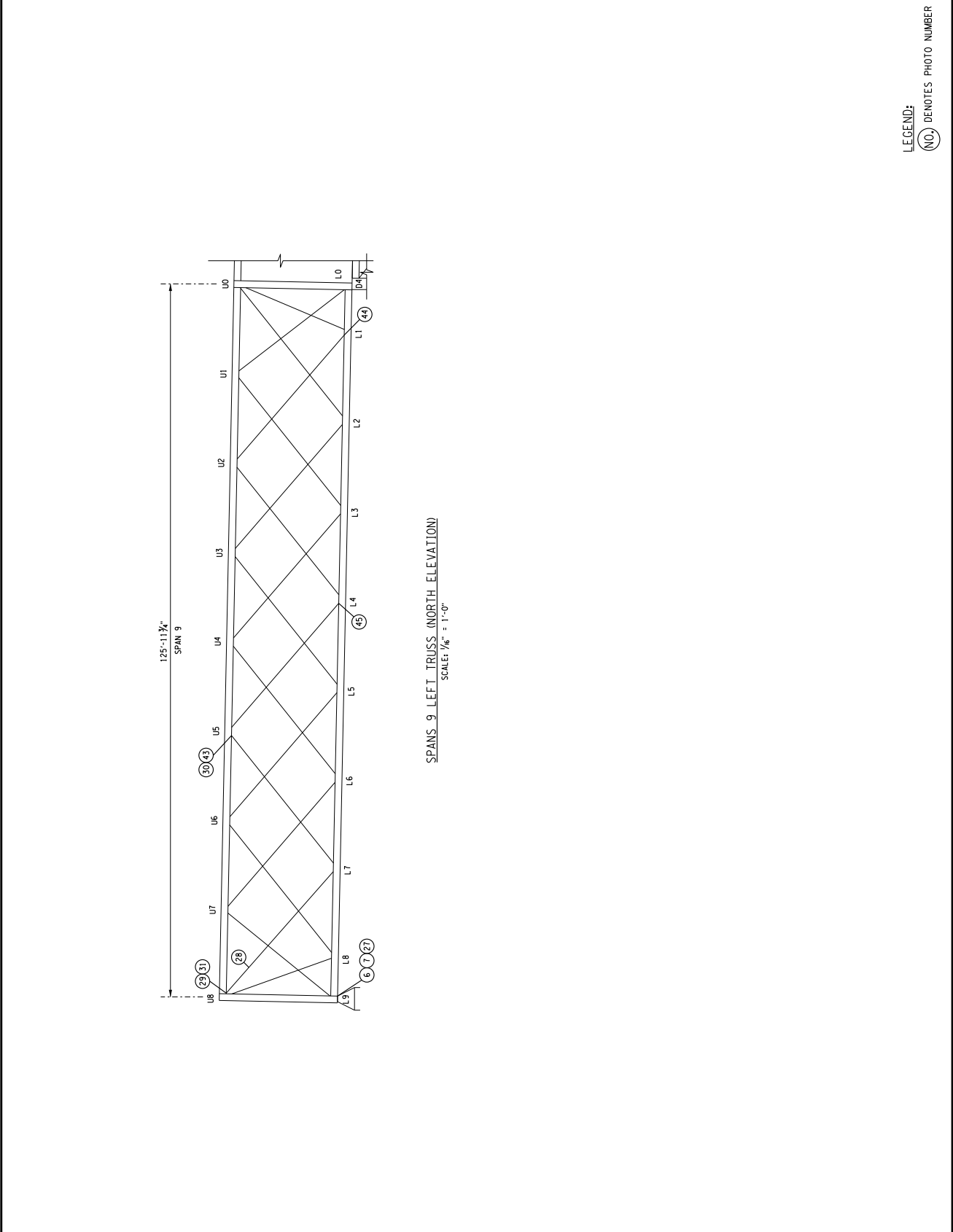
212766

P-6

SHEET 15







SPANS 9 LEFT TRUSS (NORTH ELEVATION)  
SCALE: 7/8" = 1'-0"

NO.	SECTION	BY	DATE
1			
2			
3			
4			
5			
6			

**LABELLA**  
Associates, P.C.

300 STATE STREET  
ROCHESTER, NY 14614  
P: (585) 454-6110  
F: (585) 454-0866  
LABORATORY 2011

PROJECT/CLIENT  
PONT DE RENNES PEDESTRIAN  
BRIDGE OVER GENESSEE RIVER  
DETAILED INSPECTION  
BIN 2211290  
CITY OF ROCHESTER DEPARTMENT  
OF ENVIRONMENTAL SERVICES

DRAWING TITLE LEFT TRUSS ELEVATIONS SPAN 9	
DESIGNED BY:	
CHECKED BY:	
REVIEWED BY:	
REPORT	
DATE: NOVEMBER 2012	

212766

P-7

SHEET 05

PRODUCT DRAWING NUMBER

LEGEND:  
(NO.) DENOTES PHOTO NUMBER



NO.	SECTION	BY	DATE
1			
2			
3			
4			
5			
6			

**LABELLA**  
Associates, P.C.

300 STATE STREET  
ROCHESTER, NY 14614  
P: (585) 454-0110  
F: (585) 454-0066  
www.labellassociates.com

PROJECT LOCATION  
PONT DE RENNES PEDESTRIAN  
BRIDGE OVER GENESEE RIVER  
DETAILED INSPECTION  
BIN 2211290  
CITY OF ROCHESTER DEPARTMENT  
OF ENVIRONMENTAL SERVICES

DRAWING TITLE	
TOWER 2 ELEVATIONS	
DESIGNED BY:	REVIEWED BY:
DRAWN BY:	DATE: NOVEMBER 2012
REPORT	

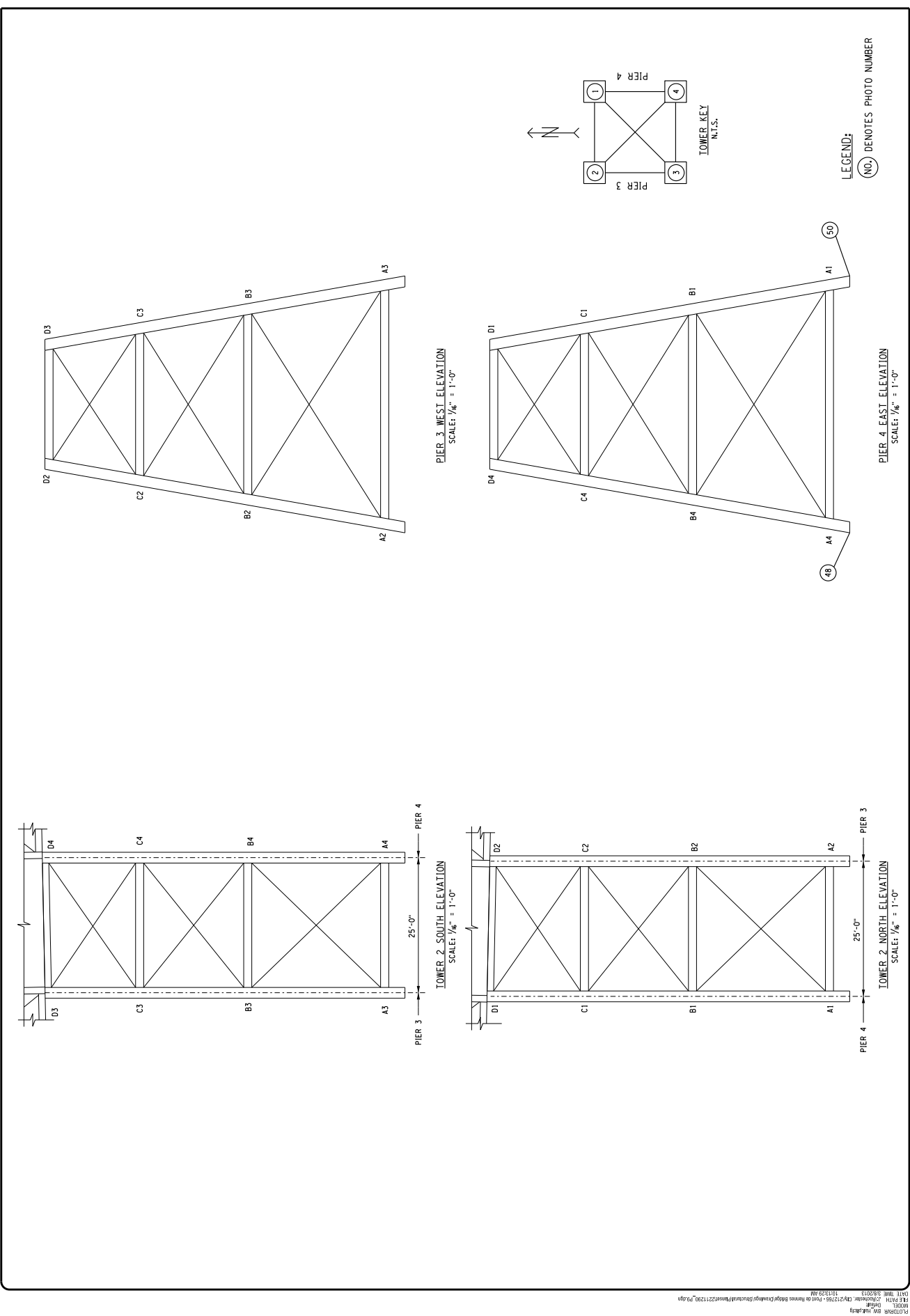
212766

P-6

15

PROJECT DRAWING NUMBER

SHEET







NO.	SECTION	BY	DATE
1			
2			
3			
4			
5			
6			

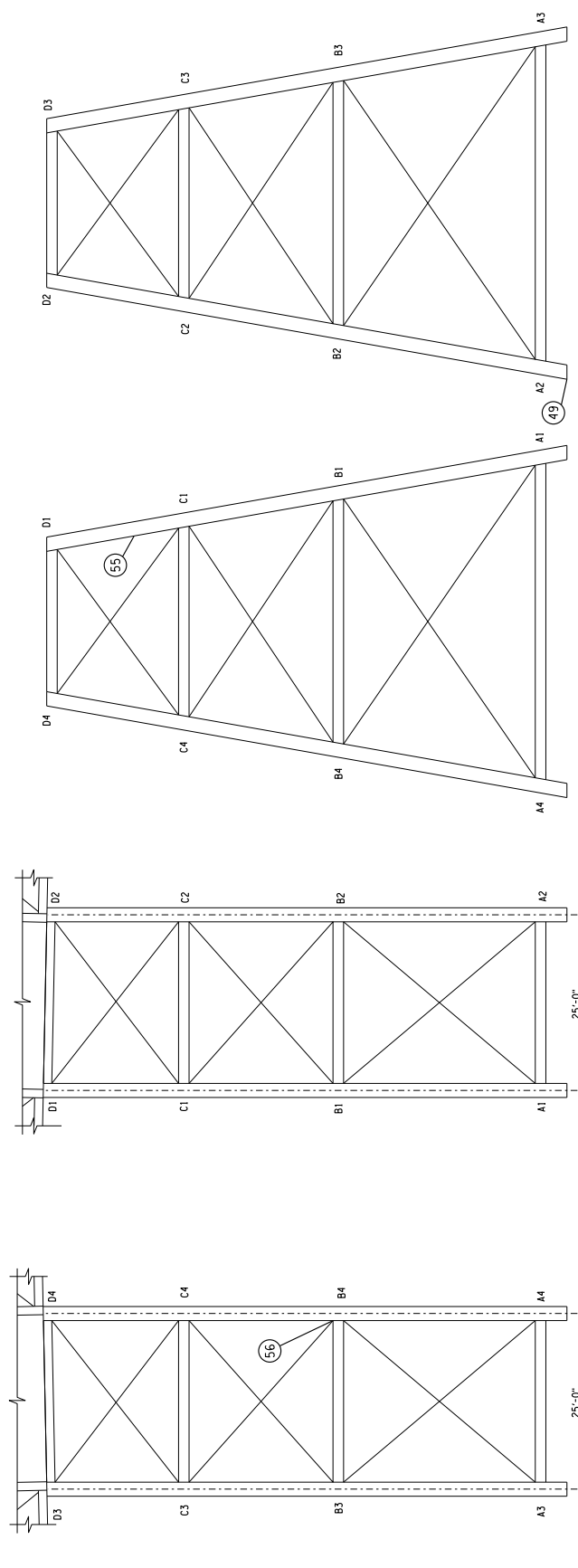
**LABELLA**  
Associates, P.C.

300 STATE STREET  
ROCHESTER, NY 14614  
P: (585) 454-0110  
F: (585) 454-0066  
www.labella.com

LABELLA ASSOCIATES, P.C.  
A PROFESSIONAL CORPORATION  
CORPORATE OFFICE  
LABELLA ASSOCIATES, P.C.  
A PROFESSIONAL CORPORATION  
CORPORATE OFFICE

PROJECT: PONT DE RENNES PEDESTRIAN  
BRIDGE OVER GENESEE RIVER  
DETAILED INSPECTION  
BIN 2211290  
CITY OF ROCHESTER DEPARTMENT  
OF ENVIRONMENTAL SERVICES

DRAWING TITLE	
TOWER 4 ELEVATIONS	
DESIGNED BY:	REVIEWED BY:
DATE:	NOVEMBER 2012
REPORT	

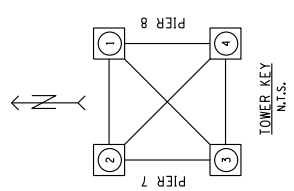


PIER 7 WEST ELEVATION  
SCALE: 1/8" = 1'-0"

PIER 8 EAST ELEVATION  
SCALE: 1/8" = 1'-0"

TOWER 4 NORTH ELEVATION  
SCALE: 1/8" = 1'-0"

TOWER 4 SOUTH ELEVATION  
SCALE: 1/8" = 1'-0"



LEGEND:  
NO. DENOTES PHOTO NUMBER