

## **EXPLORATION RESULTS**

3553 Crittenden Road  
Alden, NY 14004  
(716) 937- 6527  
eswayenvironmental.com



3553 Crittenden Road

Alden, NY 14004

(716) 937- 6527

www.natureswayenvironmental.com

Hole Number: SB-1A

DATE: 5/15/18

ELEVATION: \_\_\_\_\_

PROJECT: Subsurface Investigation for the Proposed West River Wall Improvements

Exchange Street, Rochester, NY

PREPARED FOR: \_\_\_\_\_

BORING LOCATION: Bergmann Associates

SN	0/ 6	6/ 12	12/ 18	18/ 24	N	LITH	DESCRIPTION AND CLASSIFICATION	REC	COMMENTS
0							Advanced NW casing without sampling to 14.0' bgs		Below 14.0' - Sandy slack water sediment with some silt to 18.0 feet over water sorted and deposited sand and gravel with little to some silt to 19.4 feet over dolostone boulder to 22.4 feet over silty glacial drift to 25.0 feet over sandy glacial drift to 27.9 feet over dolostone bedrock to end of coring
9	4	2	2	1	4		Wet, gray (SILTY-SAND) with very fine size sand, some silt, loose to very loose, thinly bedded with fibrous wood material	0.5'	
10	2	1	1	2	2			1.0'	
11	16	50/5"			>50		Wet, gray, very gravelly (SILTY-SAND) with 40 to 50% gravel, very fine size sand, little to some silt, very dense, stratified	0.4'	
							See next sheet		
20									

LOGGED BY: Dale M. Gramza, P.G.

PAGE 1 of 3



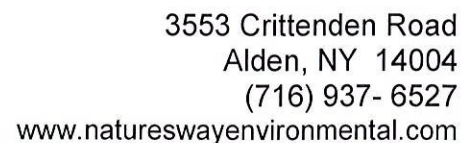


ELEVATION:

PROJECT: Subsurface Investigation for the Proposed West River Wall Improvements  
Exchange Street, Rochester, NY

BORING LOCATION: Bergmann Associates

LOGGED BY: Dale M. Gramza, P.G.



ELEVATION:

PROJECT: Subsurface Investigation for the Proposed West River Wall Improvements  
Exchange Street, Rochester, NY

BORING LOCATION: Bergmann Associates

LOGGED BY: Dale M. Gramza, P.G. PAGE 3 of 3





3553 Crittenden Road  
Alden, NY 14004  
(716) 937- 6527

www.natureswayenvironmental.com

Hole Number: SB-4

DATE: 5/18/18

ELEVATION: \_\_\_\_\_

PROJECT: Subsurface Investigation for the Proposed West River Wall Improvements

Exchange Street, Rochester, NY

PREPARED FOR: \_\_\_\_\_

BORING LOCATION: Bergmann Associates

SN	0/6	6/12	12/18	18/24	N	LITH	DESCRIPTION AND CLASSIFICATION	REC	COMMENTS
1	4						Moist, dark gray (SILT) topsoil / fill with trace very fine size sand, loose, with fine size roots	1.0'	Topsoil / fill to 0.4 foot over sand and gravel fill with cobbles and occasional boulders to 6.0 feet over silty soil fill with some gravel to 10.0 feet over silty slack water sediment with trace sand to 16.0 feet over water sorted and deposited sand and gravel with little silt to 21.0 feet over silty glacial till to 26.3 feet over dolostone bedrock to end of coring
		5			10				
			5						
				6					
2	8						Moist, dark gray to brown, very gravelly (SILTY-SAND) fill with 40 to 50% gravel and slag with cobbles and occasional boulders, very fine to coarse size sand, little silt, loose to compact	0.8'	
		11			19				
			8						
				8					
3	9							0.3'	
		7			11				
			4						
				3					
4	4						Extremely moist to wet, brown and dark gray, gravelly (SILT) fill with 20 to 40% gravel with occasional cobbles and boulders, trace very fine size sand, compact	0.8'	
		1			11				
			10						
				11					
5	5							0.8'	
		8			11				▼ Water Level at 8.6' bgs on 5/21/18 in AM
			3						
				3					
6	WH						Extremely moist, gray to brown (SILT) with trace very fine size sand, compact to loose, thinly bedded	1.0'	▼ Water Level at 9.7' bgs at end of day on 5/18/18 with HSA at 16.0'
		1			17				WH - Sampler Penetration with weight of Rods and Hammer
			16						
				6					
7	3							1.0'	
		1			3				
			2						
				3					
8	1							1.2'	
		2			4				
			2						
				10					
9	18						Wet, gray, very gravelly (SILTY-SAND) with 40 to 50% gravel, very fine to medium size sand, little silt, very dense to compact, stratified	1.3'	
		27			60				
			33						
				17					
10	5							1.5'	
		15			25				
			10						
				18					

LOGGED BY: Dale M. Gramza, P.G.

PAGE 1 of 3



ELEVATION:

PROJECT: Subsurface Investigation for the Proposed West River Wall Improvements  
Exchange Street, Rochester, NY

BORING LOCATION: Bergmann Associates

LOGGED BY: Dale M. Gramza, P.G. PAGE 2 of 3









ELEVATION:

PROJECT: Subsurface Investigation for the Proposed West River Wall Improvements  
Exchange Street, Rochester, NY

BORING LOCATION: Bergmann Associates

LOGGED BY: Dale M. Gramza, P.G.







3553 Crittenden Road  
Alden, NY 14004  
(716) 937- 6527

www.natureswayenvironmental.com

Hole Number: A-5

ELEVATION: \_\_\_\_\_

DATE: 5/22/18

PROJECT: Subsurface Investigation for the Proposed West River Wall Improvements

Exchange Street, Rochester, NY

PREPARED FOR: \_\_\_\_\_

BORING LOCATION: Bergmann Associates

SN	0/6	6/12	12/18	18/24	N	LITH	DESCRIPTION AND CLASSIFICATION	REC	COMMENTS
1	2						Moist, dark gray (SILT) topsoil / fill with trace very fine size sand, loose, with fine size roots	0.4'	
		4			10		Moist, brown, gravelly (SILTY-SAND) fill with 15 to 25% gravel, very fine size sand, loose	2.0'	
2	5						Moist, brown (CLAYEY-SILT) fill with little clay, firm	3.0'	
		5			8		Moist, dark gray, gravelly (SAND) fill with 20 to 40% gravel and cinders, very fine to very coarse size sand, loose	1.3'	
			3						
				6					
3	5								
		4			8				
			4						
				3					
4	2						Extremely moist, brown (SILT) fill with 5 to 15% red brick fragments, trace very fine size sand	6.0'	
		4			8				
			4						
				3			Cinder and ash fill	7.5'	
5	2								
		1			1				
			0						
				1					
6	WH						Wet, olive gray (SILTY-SAND) with very fine size sand, some silt, very loose, thinly bedded	9.5'	
		WH							
			WH						
				1					
7	WH						Wet, faintly mottled, olive brown to gray (SILT) with trace very fine size sand, very loose, thinly bedded	12.0'	
		WH							
			WH						
				1					
8	WH								
		WH							
			2						
				1					
9	WH						Wet, gray (SILTY-SAND) with very fine size sand, little silt, very loose, thinly bedded	16.0'	
		1			7				
			6						
				47					
10	12						Wet, brown, very gravelly (SILTY-SAND) with 40 to 50% gravel, very fine to coarse size sand, little silt, very dense, massive soil structure to weakly stratified	18.0'	
		52							
			50/4"		>102				

▼ Water Level at 9.5' bgs prior to Coring

WH - Sampler Penetration with weight of Rods and Hammer

LOGGED BY: Dale M. Gramza, P.G.

PAGE 1 of 3





ELEVATION:

PREPARED FOR: \_\_\_\_\_

BORING LOCATION: Bergmann Associates

LOGGED BY: Dale M. Gramza, P.G.



ELEVATION: \_\_\_\_\_

PREPARED FOR: \_\_\_\_\_

BORING LOCATION: Bergmann Associates

LOGGED BY: Dale M. Gramza, P.G. PAGE 3 of 3







DATE: 5/25/18

ELEVATION: \_\_\_\_\_

PROJECT: Subsurface Investigation for the Proposed West River Wall Improvements

Exchange Street, Rochester, NY

PREPARED FOR:

BORING LOCATION: Bergmann Associates

	SN	0/6	6/12	12/18	18/24	N	LITH	DESCRIPTION AND CLASSIFICATION	REC	MONITORING WELL	REMARKS	COMMENTS
0	1	2										
			6			>56		Moist, dark brown (SANDY-SILT) topsoil / fill with little very fine size sand, loose	0.3	0.7'	8" Flush mount Road box	Topsoil / fill to 0.3 foot over mixed coarse silty soil fill with little gravel to 7.5 feet over sand and gravel fill with concrete to 9.5 feet over silty slack water sediment with trace to little sand to 20.0 feet over sandy glacial till to refusal
			50/3"					Moist, mixed brown and dark gray, gravelly (SANDY-SILT) fill with 15 to 25% gravel and asphalt, loose to compact			1.5 Encased in Concrete	
	2	4		3		7					Cement / Bentonite Grout	
				4								
					3							
	3	6										
			8			16					2" PVC Riser Pipe	
5				8								
					8							
	4	16							0.5'		Bentonite Seal	
			7			>57						
			50/3"									
									7.5			
	*							Moist, gray, very gravelly (SILTY-SAND) fill with 40 to 50% gravel and concrete, very fine to coarse size sand, very dense				* Drill past obstruction
	5	8							9.5			
			2			2		Wet, brown to olive gray (SILT) with trace to little very fine size sand, loose to very loose, thinly bedded with occasional (CLAYEY-SILT) layers	0.3'		#0 Size Sand	
10	6	3				5			1.3'			
			3									
				2								
					3							
	7	1							0.7'			
			2			4						
				2								
					1							
	8	WH							2.0'			WH - Sampler Penetration with weight of Rods and Hammer
			WH			<2						
15				1								
					1							
	9	1							1.8'			
			2			3						
				1								
					2							
	10	2							1.7'			
			2			4						
				2								
20					1				20.0			

LOGGED BY: Dale M. Gramza, P.G.

PAGE 1 of 2


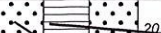
DATE: 5/25/18

ELEVATION:

PROJECT: Subsurface Investigation for the Proposed West River Wall Improvements  
Exchange Street, Rochester, NY

PREPARED FOR: \_\_\_\_\_

BORING LOCATION: Bergmann Associates

SN	0/6	6/12	12/18	18/24	N	LITH	DESCRIPTION AND CLASSIFICATION	REC	MONITORING WELL	REMARKS	COMMENTS
11	50/2"				>50		Wet, brown, gravelly (SILTY-SAND) with 15 to 25% gravel, very fine size sand, little silt, very dense, massive soil structure Auger Refusal at 20.5' bgs	0.2'		2" 10-Slot PVC SScreen #0 Size Sand	No Water at Completion



HOLE NUMBER: A-7

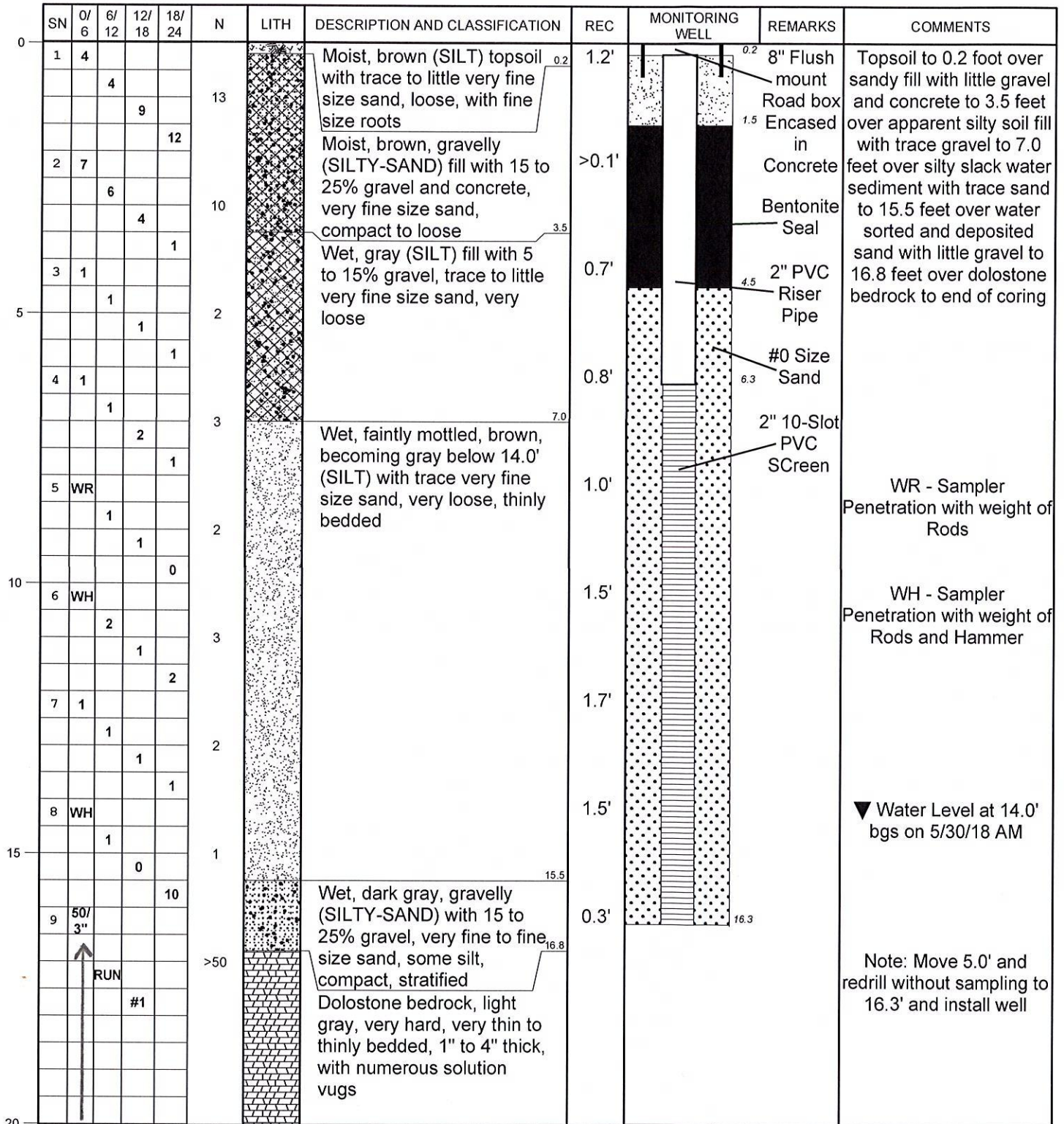
DATE: 5/29/18

ELEVATION: \_\_\_\_\_

PROJECT: Subsurface Investigation for the Proposed West River Wall Improvements  
Exchange Street, Rochester, NY

PREPARED FOR: \_\_\_\_\_

BORING LOCATION: Bergmann Associates



LOGGED BY: Dale M. Gramza, P.G.

PAGE 1 of 3



SN	O/ 6	6/ 12	12/ 18	18/ 24	N	LITH	DESCRIPTION AND CLASSIFICATION	REC	MONITORING WELL	REMARKS	COMMENTS
		RUN #1					Dolostone bedrock, light gray, very hard, very thin to thinly bedded, 1" to 4" thick, with numerous solution vugs				
	X	RUN #2									
			#2								
								23.7			
							Dolostone bedrock, moist, gray, very hard, thin to medium bedded, 1" to 8" thick, noticed gypsum nodule at 28.8' and thin calcite/gypsum layer at 35.2'				
25											
	X	RUN #3									
			#3								
30							1" void at 30.0' - Lost all water returns				
	X	RUN #4									
			#4								
35											
	X	RUN #5									
			#5								
40											

Core Data

Run #	Interval (ft)	Length (ft)	Rec (ft)	% Rec	RQD %
1	16.8 to 21.9	5.1	5.1	100	67
2	21.9 to 27.3	5.4	5.3	98	69
3	27.3 to 32.0	4.7	4.6	98	87
4	32.0 to 35.9	3.9	3.7	95	88
5	35.9 to 41.2	5.3	5.1	96	80

