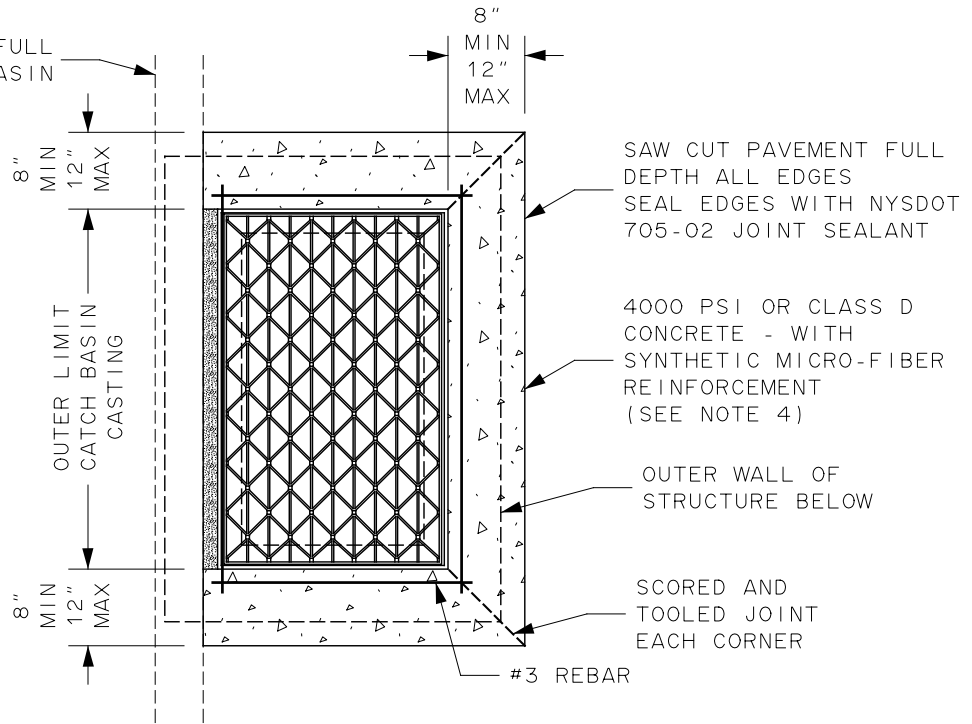
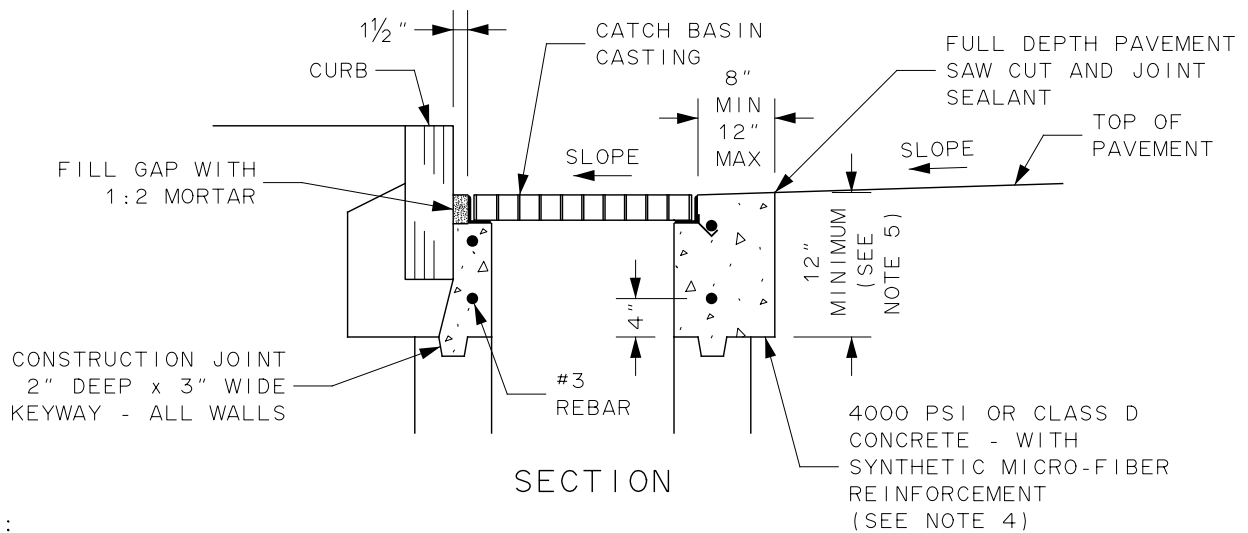


CURB - INSTALL 1 FULL LENGTH ACROSS CATCH BASIN



PLAN



SECTION

NOTES :

1. CASTING AND TOP OF CONCRETE ARE TO BE IN SAME HORIZONTAL PLANE AS SURROUNDING SURFACE, TRUE TO LINE AND GRADE, WITH GRATE HAVING FULL CONTINUOUS AND UNIFORM BEARING CONTACT WITH FRAME.
2. TOP OF GRATE IS TO BE LEVEL WITH TOP OF FRAME, STABLE AND IMMOVABLE WHEN IN PLACE AND WHEN UNDER INFLUENCE OF TRAFFIC OR ANY OTHER TYPE OF LOAD BEARING STRESS.
3. FRAME IS TO BE SET PARALLEL WITH CURB LINE.
4. HIGH EARLY STRENGTH CONCRETE IS TO BE USED FOR PLACEMENTS REQUIRED TO SATISFY OPEN TO TRAFFIC TIME REQUIREMENTS.
5. DEPTH OF CONCRETE IS TO BE MINIMUM 12 INCHES. ACTUAL DEPTH TO BE TO CONSTRUCTION JOINT WITH OR WITHOUT KEYWAY.
6. SEE MCPW DETAILS FOR CATCH BASIN INSTALLATION.
7. USE SAME DIMENSION FOR WIDTH OF CONCRETE COLLAR ON ALL SIDES.

CITY OF ROCHESTER		
CONCRETE COLLAR FOR NEW CATCH BASIN AT CURB		
ISSUED	6-24-19	NON-STANDARD DWG.NO.S604-92
REVISED	11-27-19	