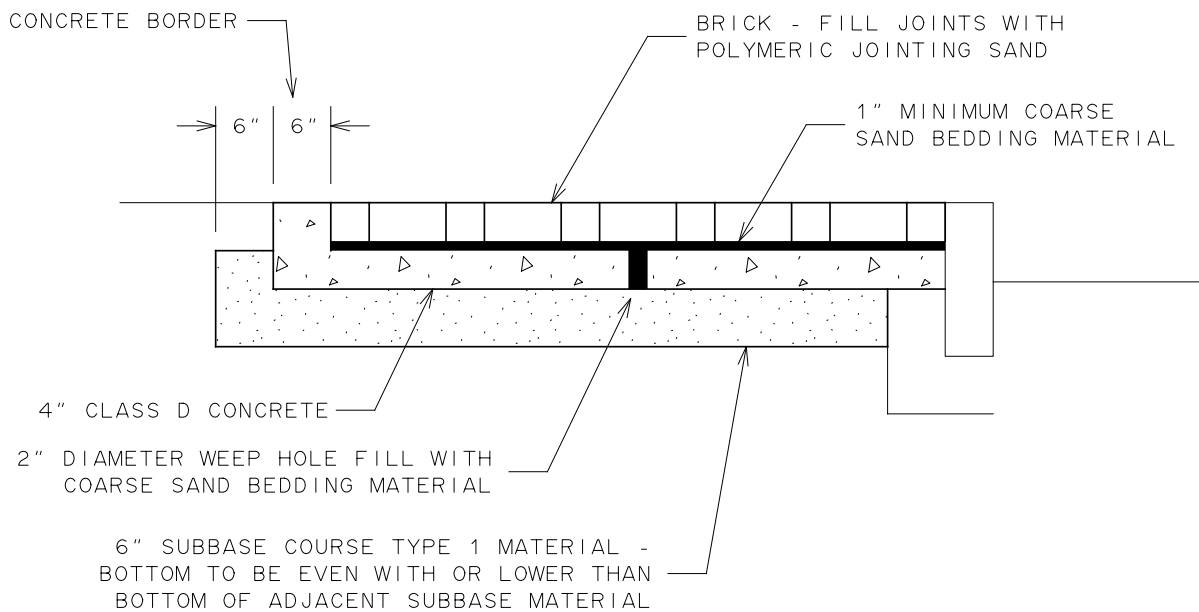


BRICK SIDEWALK



BRICK DRIVEWAY (SIDEWALK AT DRIVEWAY AND OTHER SELECT AREAS)

NOTES:

1. CROSS SLOPE OF BRICK SIDEWALK TO BE 1.50%.
2. SURFACE TO BE FIRM, STABLE AND SLIP-RESISTANT.
3. PROVIDE 1/2 INCH WIDE EXPANSION JOINT BETWEEN NEW BRICK CONSTRUCTION AND OTHER PAVED SURFACES, STRUCTURES AND APPURTENANCES.
4. EXPANSION JOINT: 1/2 INCH WIDE PREMOULDED EXPANSION JOINT MATERIAL, SEAL TOP WITH CAULKING SEALANT 1/2 WIDE 5/8 INCH DEEP.
5. PROVIDE WEEP HOLE THRU CONCRETE FOUNDATION FOR EVERY 100 SQUARE FEET OF BRICK AREA AND AT ALL LOW POINTS.
6. BRICK SIDEWALK GRADE AND SURFACE TO BE MAINTAINED ACROSS DRIVEWAYS.

CITY OF ROCHESTER		
BRICK SIDEWALK AND DRIVEWAY		
ISSUED	9-2-91	STANDARD
REVISED	5-15-20	DWG.NO.R608-8