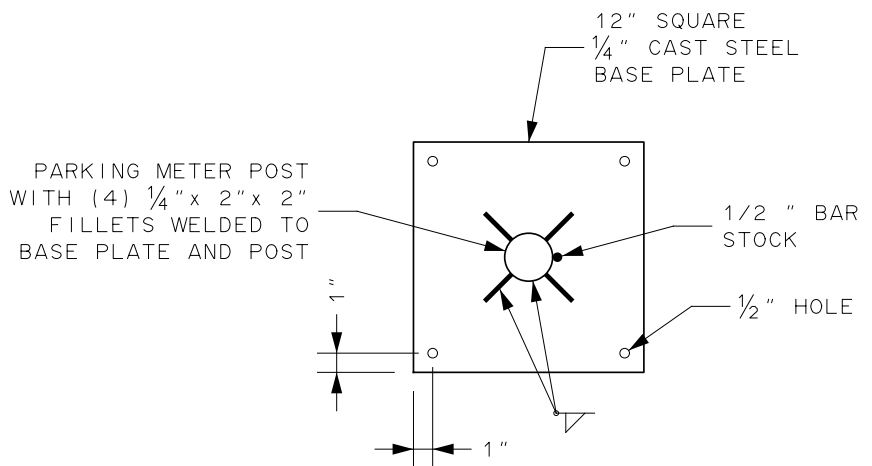


PLAN



BASE  
PLATE

NOTES :

1. WHERE DISTANCE BETWEEN BACK EDGE OF SIDEWALK AND FACE OF CURB IS LESS THAN 7 FEET, OFFSET TO STREET SIDE FACE OF POST IS TO BE 18 INCHES.
2. PARKING METER POST WITH BASE PLATE IS TO BE USED ONLY IN LOCATIONS WHERE AN EXISTING PAVED AREA IS TO REMAIN, OR WHERE STANDARD INSTALLATION WITH 6 FEET LENGTH POST IS NOT FEASIBLE (i.e.: OVER SUBSURFACE OBSTRUCTION SUCH AS AREAWAY, PARKING GARAGE, OR OTHER STRUCTURE, AND TOP OF OBSTRUCTION IS KNOWN TO BE SHALLOW).
3. BORE 3/8 INCH DIAMETER WEEP HOLE THRU POST WALL 3 INCHES ABOVE FINISHED GRADE.
4. EXACT LOCATION OF PARKING METER POST WILL BE AS DIRECTED BY BUREAU OF PARKING. IF THERE ARE ANY QUESTIONS REGARDING LOCATION, CALL BUREAU OF PARKING ADMINISTRATION OFFICE FOR FURTHER ASSISTANCE AT (585) 428-7484.

CITY OF ROCHESTER		
<b>PARKING METER POST WITH BASE PLATE</b>		
ISSUED	9-2-91	STANDARD
REVISED	12-9-21	DWG.NO.R643-2