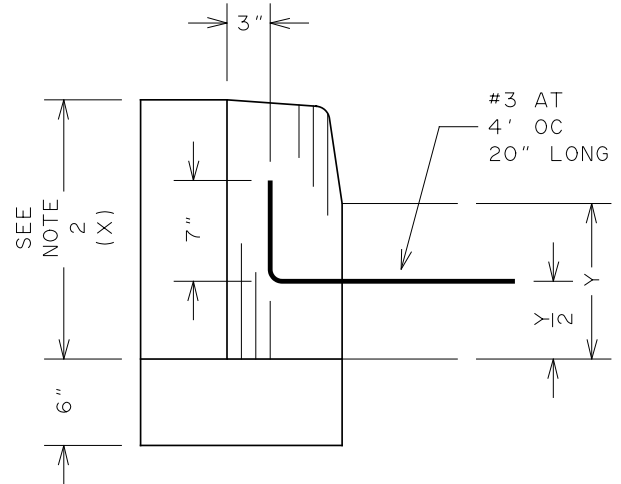
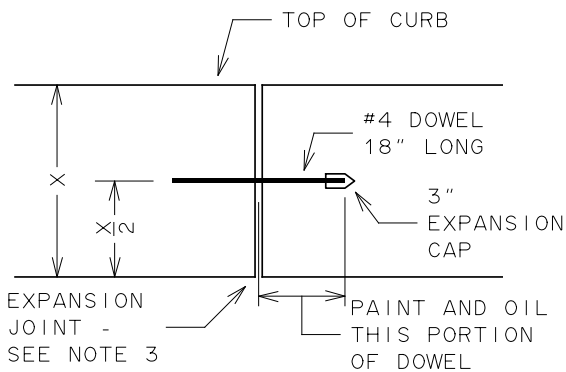


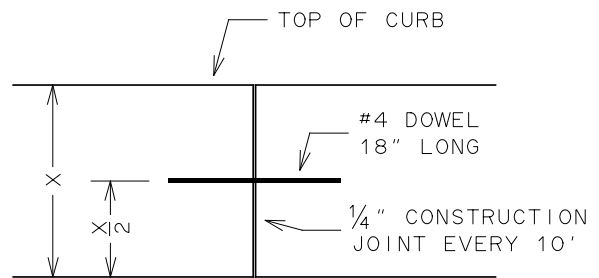
CONCRETE CURB



CONCRETE CURB AT RIGID PAVEMENT



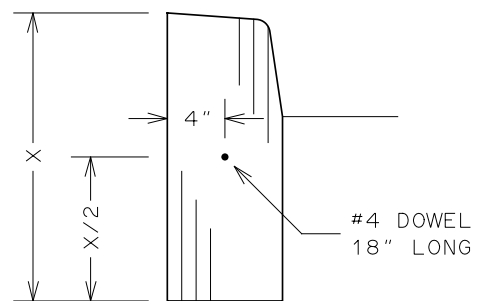
ELEVATION AT EXPANSION JOINT



ELEVATION AT CONSTRUCTION JOINT

NOTES:

1. USE CLASS A CONCRETE FOR CONVENTIONALLY FORMED CONCRETE CURB - CLASS J CONCRETE FOR MACHINE FORMED CONCRETE CURB.
2. BOTTOM OF CONCRETE CURB AND CONCRETE BASE TO BE AT SAME ELEVATION.
3. EXPANSION JOINTS TO BE 3/4 INCH WIDE SPACED EVERY 20 FEET AND AT ALL IMMOVABLE OBJECTS. FILL JOINTS WITH PREMOLDED RESILIENT JOINT FILLER MATERIAL.
4. CURB REVEAL FOR HEADER CURB AT DRIVEWAY APRONS IS 1-1/2 INCHES, AT SIDEWALK ACCESS RAMPS 0 INCHES.
5. TACK COAT TO BE APPLIED BETWEEN ALL LIFTS OF HMA COURSES AND ON TOP OF CONCRETE BASE.
6. PAVEMENT SEAMS TO BE SEALED WITH BITUMINOUS SEALER IN ACCORDANCE WITH NYS DOT MATERIAL DESIGNATION 702-0700.



SECTION AT DOWEL

CITY OF ROCHESTER		
CONCRETE CURB		
ISSUED	9-2-91	STANDARD
REVISED	12-9-19	DWG.NO.R609-5