

To: Amanda Phetteplace, RLA

From: Thomas Palumbo, PE
Rochester

Project/File: 192800250

Date: August 23, 2023

Reference: Minister Franklin D. Florence Civil Rights Heritage Park, Rochester NY

Stantec was authorized to conduct an initial investigation of Baden Park as the site of a new Civil Rights Heritage Park in Rochester. The park has been named in honor of Minister Franklin D. Florence for his tireless work in the community.

This initial investigation phase is being conducted to provide the groundwork for preparation of a Park Master Plan and includes four (4) tasks:

1. Base Mapping,
2. Documenting Recreational Facilities Use,
3. Campus Conditions Analysis, and
4. Investigating Precedent setting examples.

The following is Stantec's summary of findings from services provided for each of the above noted tasks. We employed the assistance of Lu Engineers (MBE) in assisting with preparation of the campus conditions and historical uses and Sue Steele Landscape Architecture (WBE) in researching and describing the precedent examples.

1. Base Map Preparation:
This mapping provides a basis for planning-level analysis and evaluation.
 - a. Base mapping has been assembled using:
 - i. Record maps from utility providers and online public utility services from UDIGNY.
 - ii. Orthoimagery of the site was obtained through the Discover Data NY website.
 - iii. Topographic linework was obtained from GIS databases such as the Monroe County GIS website and other internal resources.
 - iv. Monroe County tax maps.
 - v. Findings from onsite investigations.

Reference: Minister Franklin D. Florence Civil Rights Heritage Park, Rochester NY

- b. The data has been compiled in AutoCAD and PDF format at 1" = 20' scale and 1" = 40' scale on 30"x42" sheets. These are identified as SK100 Base Map and SK200 and SK201 Enlarged Base Map (south and north).

2. Recreation Facilities Use, Investigations, and Documentation.

- a. Based on site investigations, a virtual meeting with Sarah Scott, Director of Programs & Park Stewardship, City of Rochester Department of Recreation and Human Services (DRHS) and Amanda Phetteplace, RLA, Department of Environmental Services (DES) on February 7th, 2023, and additional information provided by DRHS.
 - i. Baden Park includes an extensive active recreation area. The park offers:
 - 1. 2 - baseball fields with backstops, bleachers, and team benches
 - 2. 1 - T-ball field
 - 3. 1 - softball field with backstop, bleachers, and team benches
 - 4. 4 - handball courts with lighting
 - 5. 2 - tennis courts with lighting and partial fencing
 - 6. 2 - basketball courts with lighting and partial fencing
 - 7. Restroom facilities
 - 8. Playground located on the RCSD School 22 property
 - ii. The City of Rochester has a joint use/maintenance agreement with the RCSD for all the park amenities at Baden Park for Abraham Lincoln School #22. During the school day, the fields, courts, etc. are accessible to the school for gym class, recess, etc.
 - iii. Ms. Scott indicated that maintaining visibility to site features is important due to prior unlawful or illicit activity that has occurred in the park.
 - iv. Recreation field use permits reviewed by Sara Scott showed the following uses in 2022:
 - 1. Rochester Hispanic Youth Baseball League (RHYBL).
RHYBL utilized all fields from April-August 2022. Baden Park and Don Samuel Torres (DST) are the 'home base' fields for the Rochester Hispanic Youth Baseball League. They have right of first refusal (informally) on the fields and concession stand. After an incident last summer involving a youth, RHYBL moved some of their games to another location. The hope is that RHYBL will continue to use Baden and DST in the future if these

Reference: Minister Franklin D. Florence Civil Rights Heritage Park, Rochester NY

locations are improved and invested in over the years to attract and support RHYBL's mission.

2. Multiple community events have occurred from May-October, samples of these in 2022 include:
 - a. Community Celebration,
 - b. School #22 Field Day,
 - c. Puerto Rican Festival,
 - d. Juneteenth (Myra Brown),
 - e. Community Health Festival,
 - f. ROC The Block (Miguel Melendez),
 - g. Community Book Bag Giveaway,
 - h. Baden-Hanover Reunion, and
 - i. Community Outreach Event.

b. Recreation Inventory

Baseball Field #1 (Northwest Corner)

- Full Size baseball field (high school)
- Backstop
- Net batting cage located north of tennis courts.

Baseball Field #2 (Northeast Corner)

- Little League Field
- No lighting
- Backstop

T-Ball Field (North Central)

- Small T-ball/practice field
- No Lighting
- Small temporary backstop
- Recent addition - not in aerial photographs

Softball Field (Southwest)

- Full size field
- Babe Ruth Softball & Xtreme Fast Pitch (Ages 4-18)
- No lighting

Reference: Minister Franklin D. Florence Civil Rights Heritage Park, Rochester NY

Lighting

- Though the baseball fields do not have lighting, there is portable light equipment at the Park

Basketball Courts (2)

- Full Size Court
- Lighting
- Partially fenced
- Storm drainage inlets and piping evident

Tennis Courts (2)

- Full size
- Lighting
- Partially fenced
- Storm drainage inlets and piping evident

Handball Courts (4)

- Meets recreational standards
- Some cracks in surface
- Overall good condition

- c. Recreation Facilities Q & A with Department of Environmental Services and Department of Recreation and Human Services:

Department of Environmental Services (DES) questions in BLACK

Department of Recreation and Human Services (DRHS) responses in GREEN

DRHS Summary:

My general thought is that the amenities at Baden Park are equal to or better than the amenities at several other similarly sized parks in the City's network. The site has basketball courts, handball courts, and tennis courts all in really good condition. The site also has a nearly new playground (at School 22). The school has the playground, but all RCSD public schools have to keep their play spaces unlocked and open the public per agreement COR. The issue at this location is public safety – perception or reality – and more reality these days given the recent homicide.

Handball Courts

Who uses the handball courts? Leagues or just people using it recreationally?

Recreational. No formal leagues that I'm aware of but they are widely used.

What is the condition – DES seems to remember that that the community insisted on keeping them and they were improved at one point.

Are they the only handball courts in a City park?

The courts are in good shape. I think they are the only official hand ball courts in the City.

Reference: Minister Franklin D. Florence Civil Rights Heritage Park, Rochester NY

Basketball Courts

Any idea when they were last rehabbed and current condition?

The courts are in good condition. I think the RCSD may have rehabbed them when they redid the playground. I believe this work was part of the larger school modernization project that took place 2 years ago.

Who uses them? Leagues or just recreational use?

The courts are used by the school and the community (recreational use).

Fields

Who paints the lines on the field – is this something the City does or do the RHYBL leagues do it?

The City's Parks Operations team is responsible for field maintenance including striping of fields. At Baden, RHYBL has invested a lot of time and energy into upgrading and up keeping the fields as they are the sole entity that uses the park for league play.

Tennis Courts

Any idea when they were last rehabbed and current condition?

See above re: basketball courts.

Concession Building

The concession stands and associated facilities are owned and maintained by the City of Rochester. The Rochester Hispanic Baseball League has a seasonal agreement with DRHS to operate the concession stand and restrooms during their league play / practices. The restrooms attached to the concession are NOT open to the public during normal park hours unless there is a RHYBL game or practice.

3. Existing Campus Conditions Analysis:

Baden Park comprises a total area of 8.65 acres. This task is broken down into two sections: photo documentation and site analysis.

a. Historical Context:

In advance of our scope of work, below is a summary of the historic background of the site.

The future Minister Franklin D. Florence Civil Rights Heritage Park is in Baden Park in the Upper Falls Neighborhood north of Downtown Rochester. It is bounded to the north by Upper Falls Boulevard, previously known as Herman Street and to the west by Hanover Street. Baden Park opened in 1964 and has become a central feature in the neighborhood formerly known as the Baden-Ormond District.

The neighborhood was primarily a single-family residential district and was one of the first areas of the city that experienced urban renewal. Urban renewal activities included

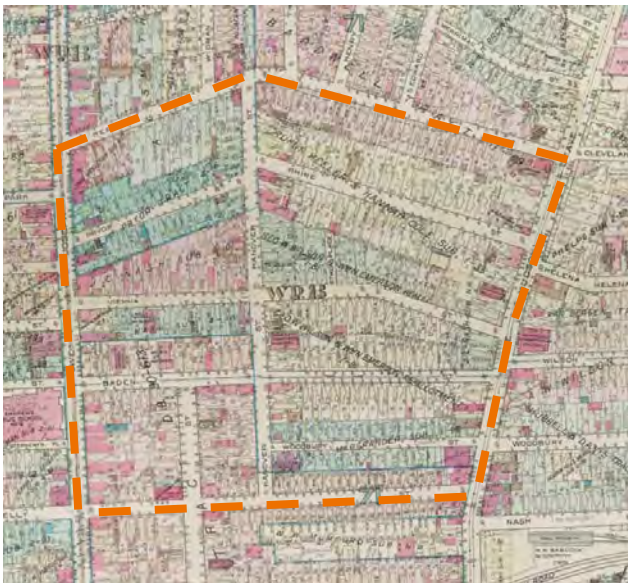
Reference: Minister Franklin D. Florence Civil Rights Heritage Park, Rochester NY

demolishing homes and businesses to accommodate new businesses and public housing. To accomplish this, hundreds of residents were displaced to other neighborhoods and in most cases the historic street grid that created the single-family residential neighborhoods were lost.

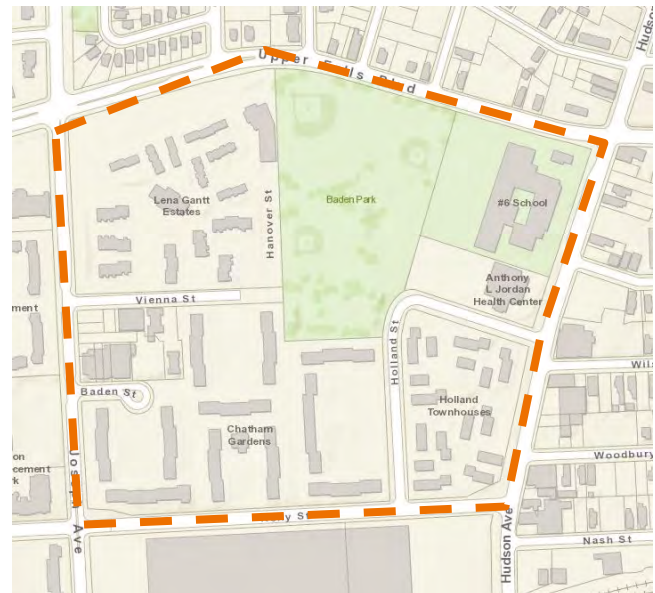
Regarding the original street grid, based on historic maps through the City of Rochester Historic Map Viewer, the major blocks have retained similar structure while significantly reducing building density and eliminating the neighborhood blocks. The northern portion of Hanover Street altered in the 1980s due to the construction of Lena Gantt Estates to the west. Holland Street, located adjacent to the southeast of the Site, previously extended from Hudson to Hanover Street and was identified as Vienna Street. Crystal Place extended north Vienna Street, in the area that would now be adjacent to the west of the tennis courts. Rhine Street extended from Hanover Street to Hudson Street, just south of the Baseball Field #1.

A notable feature that has remained since before the urban renewal in the neighborhood is the Baden Street Settlement, still located on Baden Street. Originating in 1901, it was once a center of activism helping immigrants to assimilate but has dynamically grown to now provide a full range of community services. It is one of the largest community outreach institutions in Rochester and one of the oldest in the U.S.

1935



2023



From the late 1800s to 1960s, the Site and surrounding properties were developed with residential and commercial buildings. Typical of the period the single family districts had commercial/manufacturing uses intermingled with the housing. Prior practices in the City of Rochester included burying the demolition building debris within the basements of the

Reference: Minister Franklin D. Florence Civil Rights Heritage Park, Rochester NY

buildings therefore, it is possible that former building materials and debris may be present on Site.

Previous On-Site Uses:

- 88 Hanover Street, located on the southern portion of the northwest baseball diamond, was utilized as a poultry shop in 1935 and as a washing fluid facility on the Sanborn map.
- 56 Hanover Street, located south of the southwestern baseball diamond, was utilized as a sheet metal shop in the 1930s.
- 45 Herman Street, located on the northwest corner of the Site, was utilized as a slaughterhouse in 1925-1935.
- 71 Herman Street, located on the northeastern portion of the Site, was listed as a sheet metal shop from 1935-1945.
- 8 Rhine Street, located on the western portion of the Site south of the northwest baseball diamond, was listed as "Rochester Furnace Parts" in the 1935 Street Directory.
- 15 Rhine Street, located in the central portion of the Site, was listed as "De Roller Carting Co." in the 1925-1935 Street Directories and identified as "welding" on the 1950 Sanborn Map.
- 16 Rhine Street, located in the central portion of the Site, was utilized as American Pipe Cleaner in the 1940s-1950s.
- 18 Rhine Street, also located in the central portion of the Site, was utilized as a scrap metal facility from the 1925-1950s.
- 22 Rhine Street, located north of the tennis courts, was listed as "Junk" in the 1935 Street Directory.
- 28 Rhine Street, located south of the northeastern baseball diamond, was utilized as a clothing manufacturing factory from at least the mid-1920s to the 1950s.
- 32 Vienna Street, located adjacent to the north of the southern walking trail extending from Hanover Street, was listed as "Junk" in the 1935 Street Directory.

Previous Off-Site Uses:

- 29 Rhine Street, located adjacent to the east in the current school parking lot, was listed as "Junk" in the 1945 Street Directory.
- A junk yard was identified northwest of the Site on the Sanborn Map.

Reference: Minister Franklin D. Florence Civil Rights Heritage Park, Rochester NY

- A filling station was identified adjacent to the west, on the southwest corner of Upper Falls Boulevard and Hanover Street, on the Sanborn Map.

Based on past development patterns, former uses of the Site as junk yards, clothing factory, pipe cleaning factory, welding, etc., it is likely that there are remnant building foundations and debris remaining as well as possible metal and debris associated with junk yards present. Appropriate Phase I & II Environmental Site Assessments are recommended as part of future evaluations.

References:

- City of Rochester Assessment Records
- City of Rochester Plat Maps (1910 and 1935)
- City of Rochester Sanborn Map (1911 updated 1950)
- City of Rochester Aerial Photographs (1930-2019)
- City of Rochester Street Directories (1925-1945)
- Digital Scholarship Lab, University of Richmond
- Social Welfare History Project VCU Libraries

b. Photo Documentation:

On site documentation was completed and representative photographs compiled. This documentation is provided in two (2) sections which represent the southern passive recreation area and the northern active recreation area. The representative photos are numbered and provided in Exhibit 1A "Southern Baden Park Representative Photos" and Exhibit 1B "Northern Baden Park Representative Photos". Photo locations are provided on the Photo Location Maps, SK300 and SK301.

c. Site Analysis

The analysis is shown in a visual diagram, Site Analysis Map SK400, which identifies features and points of interest. The following is a written summary of Stantec's findings and impressions.

i. General

Baden Park is 8.65 acres and bound by Upper Falls Boulevard to the north, School #22, Jordan Health Center, and Holland Street to the east and residential areas along the south and west property lines. Vienna Street and Hanover Street also provide access to the west side of the Park.

The Park has restroom facilities which are centrally located to the active recreation use and are in good condition. City of Rochester has an agreement with Abraham Lincoln School #22 for the maintenance of the park- grass mowing, bathroom cleanup, trash removal, landscaping, baseball field maintenance.

ii. Character

The north portion of the park is dedicated to active recreation and is primarily open space. There are mature deciduous trees in the center and along the west and north boundaries. The center portion also has two earthen mounds which create

Reference: Minister Franklin D. Florence Civil Rights Heritage Park, Rochester NY

character and boundary between uses. This center section also has two sweeping walkways that provide an east west connection.

The south section is approximately 1.6 acres, has more mature trees and earthen mounds around the perimeter. There is a clearing central to this area and curvilinear walkways providing east-west access. There's minimal activity along the southern property line.

iii. Existing Tree Overview

Though a detailed tree survey has not been completed the trees appear to be generally in good health with full canopies adding to the character of the space See SK500: "Existing Tree Overview", for the map identifying and tree grove locations.

Baden Park has good stands of mature deciduous trees mixed with younger specimen and ornamental trees. Specimen trees have been identified in the exhibit. In general, trees could use pruning to maintain their health as well as safety of visitors from falling dead branches. Trees in southwest corner block visibility to adjacent property.

It is recommended that a more detailed evaluation of the tree conditions be conducted as there is some concern for potential diseases and trunk stress.

iv. Access and Circulation

The park offers good circulation with primary entrances at each quadrant. There are walks along the perimeter of the recreational spaces and east-west between Holland St and Vienna Street. The east west connection has trail lighting. There is a primary linear spine that provides north-south access from the southern area to the restroom area. This route has lighting specific to the trail and from the basketball and tennis courts.

All walkways are asphalt except for a small section of concrete walk at the Vienna St. entrance. The asphalt walks are in fair to good condition except for some minor ponding near Holland Street and impacts from tree roots. The short walk between Holland St. and the main spine is too narrow as can be seen from the lawn rutting and lack of turf on either side of the walk.

All walks appear to be ADA accessible routes except the walkways from the tennis and handball courts to the west side. This area between the mounds has excessive slope. Final verification of accessibility should be conducted with precise survey data.

There are ADA accessible ramps at Upper Falls Blvd, the School #22 parking lot and Vienna St. There is no accessible ramp at Holland Street unless the ramp at the Jordan Health Center drive is used.

v. Parking

There is no parking designated specifically for park users. There is on-street parking along Holland Street, east of the Jordan Health Center driveway, and on

Reference: Minister Franklin D. Florence Civil Rights Heritage Park, Rochester NY

alternating sides of Vienna Street.

Neither Jordan Health Center or School #22 parking lots are gated and both lots potentially provide for parking after hours.

vi. Signage

Baden Park signage is located at Holland St., Vienna St., and along Upper Falls Blvd. The signs at Vienna St. and Holland Street are in reasonable condition but are single-sided and offer a blank face to the park users.

The new sign representing the "Future home of the Minister Franklin D. Florence Civil Rights Heritage Site" is in good condition but could be confusing in contrast with the Baden Park signage.

There is no wayfinding for the park and limited litter receptacles.

vii. Fencing

Fencing exists along the south, west and north property lines. The fencing is approximately 5 ft. high and black, there are breaks in the fence at entrances. There is no fencing between the Park and Jordan Health Center or School #22 however there is a tall (approx. 10 ft.) fence adjacent to the basketball and tennis courts which creates a barrier.

There are no gates or other access controls.

viii. Lighting

Lighting is achieved by post-top light poles 16-18 ft. tall along the trails. These lights are located on the route between the primary entrance at Holland Street to Vienna Street and near the walk at the tennis court.

There is tall (20-30 ft.) down lighting at the courts. A temporary flood light exists on the north end of the Park.

ix. Utilities

1. Sewer: There is a 12" combined sewer located in Holland Street and through the southern park area between Holland and Vienna.
2. Drainage: The only drainage features evident were in the tennis court and basketball court areas. No records were located for this piping.
3. Gas: There is a 12" gas main along the westerly property line.
4. Electric: There is electric in Holland St. but the service for the park comes from Upper Falls Blvd where there is a service panel along the road.
5. Communications: Unknown

Reference: Minister Franklin D. Florence Civil Rights Heritage Park, Rochester NY

x. Unique Characteristics

1. The trees are mature with well-shaped canopies that form a grove along the east-west trail and provide definition along the southerly property line.
2. Earthen mounds add verticality and define spaces.
3. Adjacencies:
Being adjacent to a school, health center, major roadway and surrounding residents allows for interaction and affective outreach.
4. The southern section of the park is underutilized and available for use without impacting existing active recreation park users.

4. Precedent Examples:

The initial intent was to select four (4) examples which exhibit characteristics that may be applicable to the future Minister Franklin D. Florence Civil Rights Heritage Park. Our search for examples was limited to the US East coast. We found 12 sites of parks related to civil rights that we felt had merit for a closer look. Reviewing these with DES we were able to identify five (5) of particular interest.

These precedent examples were found to fall into categories that represent an event, person, or location and have been identified in this manner. Where the information was available, we defined scale, cost, and historic applicability.

- a. A presentation has been developed summarizing five (5) precedents that represent examples of Civil Rights Heritage Parks or Sites. The presentation is provided in PDF format and included as Exhibit 2. The precedent examples are as follows:
 - i. Civil Rights Garden, Atlantic City, NJ
 - ii. Tubman-Garrett Riverfront Park, Wilmington, DE
 - iii. Memorial to Enslaved Laborers, Charlottesville, VA
 - iv. I AM A MAN Plaza, Memphis, TN
 - v. Kelly Ingram Park, Birmingham, AL

Reference: Minister Franklin D. Florence Civil Rights Heritage Park, Rochester NY

Thank you for the opportunity to evaluate this site for such an important use. Please contact us should you require additional information.

Respectfully,

STANTEC CONSULTING SERVICES INC.

A handwritten signature in blue ink, reading "Thomas Palumbo", with a large, sweeping loop at the end.

Thomas Palumbo PE
Principal - Community Development
Phone: (585) 413-5225
Mobile: (585) 298-2620
thomas.palumbo@stantec.com

Attachment: Maps, Photo Exhibit, Precedent Examples

Exhibit 1A - Southern Baden Park Representative Photos (See Photo Location Map SK300)



Picture 1 – Holland Street looking east



Picture 2 – Holland Street looking west



Picture 3 – East end of Southern Walking Path



Picture 4 – Baden Park Sign



Picture 5 – Back side of Baden Park Sign



Picture 6 – Typical Light Pole on Southern Walking Path



Picture 7 – Asphalt Sidewalk next to Basketball Courts



Picture 8 - Looking North at Basketball Courts



Picture 9 - Looking North at Basketball Courts



Picture 10 – Light Post along Southern Walking Path



Picture 11 – Typical Light Post Base at Southern Walking Path



Picture 12 –Southern Walking Path – Looking West



Picture 13 – Southern Walking Path- Looking at Basketball Courts



Picture 14 – Looking North at Basketball Courts



Picture 15 – Southern Walking Path – Looking West



Picture 16 – Southern section of Baden Park looking south



Picture 17 – Civil Rights Heritage Site Sign



Picture 18 –Southern Walking Path – Looking West



Picture 19 – Southern section of Baden Park looking east



Picture 20 – Southern section of Baden Park looking west



Picture 21 – Southern section of Baden Park



Picture 22 – Southern Walking Path – Looking West



Picture 23 – Southern section of Baden Park



Picture 24 – Southern Walking Path – Looking West



Picture 25 – Southern section of Baden Park looking east



Picture 26 – Asphalt Path along West Side of Park



Picture 27 – Chainlink Fence along West Side of Park



Picture 28 – Southwest Softball Field #1 looking Northeast



Picture 29 - Southwest Softball field #1 backstop



Picture 30 – Southwest Softball Field #1 looking North



Picture 31 – Southern section of Baden Park along west property line



Picture 32 – Southern walking path looking at Vienna Street



Picture 33 – West end of Southern Walking Path – Looking East
Vienna Street Entrance



Picture 34 – Baden Park sign at Vienna Street Entrance



Picture 35 – Southern section of Baden Park looking south



Picture 36 – Southern section of Baden Park looking north
along west property line



Picture 37 – Southern section of Baden Park looking west along south property line



Picture 38 – Southern section of Baden Park looking southeast



Picture 39 – Southern section of Baden Park earthen mound



Picture 40 – Southern section of Baden Park looking north



Picture 41 – Southern section of Baden Park looking north



Picture 42 – Southeast corner looking northwest



Picture 43 – Southern section of Baden Park earthen mound



Picture 44 – Southern section of Baden Park looking southeast



Picture 45-47 – Southern section of Baden Park - Panorama of clearing from the east

Exhibit 1B - Northern Baden Park Representative Photos (See Photo Location Map SK301)



Picture 48 – Northwestern Baseball Field #1



Picture 49 – Northwestern Baseball Field #1



Picture 50 – Northwestern Baseball Field #1



Picture 51 – Northwestern Baseball Field #1 Looking from
Upper Falls Blvd.



Picture 52 – Upper Falls Blvd Looking West



Picture 53 – Northwestern Baseball Field #1



Picture 54 – Upper Falls Blvd Looking West



Picture 55 – Southeastern Baseball Field #2



Picture 56 – Southeastern Baseball Field #2 Looking Southeast



Picture 57 – Southeastern T-Ball Field



Picture 58 – Eastern Accessible Sidewalk Looking South



Picture 59 – Looking South at Batting Cage / Tennis Courts



Picture 60 – East side of Basketball / Tennis Courts
Looking South



Picture 61 – Restrooms - Looking North



Picture 62 – Eastern Walking Path Looking at Northeast
Baseball Court



Picture 63 – Civil Rights Heritage Site Sign



Picture 64 – Restrooms - Looking Southeast



Picture 65 – Looking East at Batting Cage



Picture 66 – Restrooms - Looking North



Picture 67 – Wallball Court Looking East



Picture 68 – Wallball Court Looking East from Path



Picture 69 – Central Walking Path Looking East

Minister Franklin D. Florence Civil Rights Heritage Site at Baden Park

Precedent Setting Examples
Rochester, NY



City of Rochester, NY
Malik D. Evans, Mayor
Rochester City Council

ROCHESTER BCFF





Project Focus

In honor of Minister Franklin D. Florence

- Local Civil Rights icon and leader of F.I.G.H.T. (Freedom, Independence, God, Honor, Today).
- Challenged Kodak over its lack of hiring diversity creating change across the city.
- Created FIGHTON, the nation's first Black-run community development corporation, founded in partnership with Xerox.

Project Goal - Represent local black Rochester history of the struggle for civil rights dating back to the early 1800's.

Task:

- Research precedents for Civil Rights / Heritage Parks from around the country to gain inspiration for the design of a Civil Rights Park in Rochester.
- Show how the use of space and design can tell a story about an important person, location or event.
- Understand how to illuminate the lives and unmute the voices of Rochester's Black activists.



Design Approach

Project precedents selected to demonstrate:

- A person or group of people
- Location
- Historic event

Rochester site program:

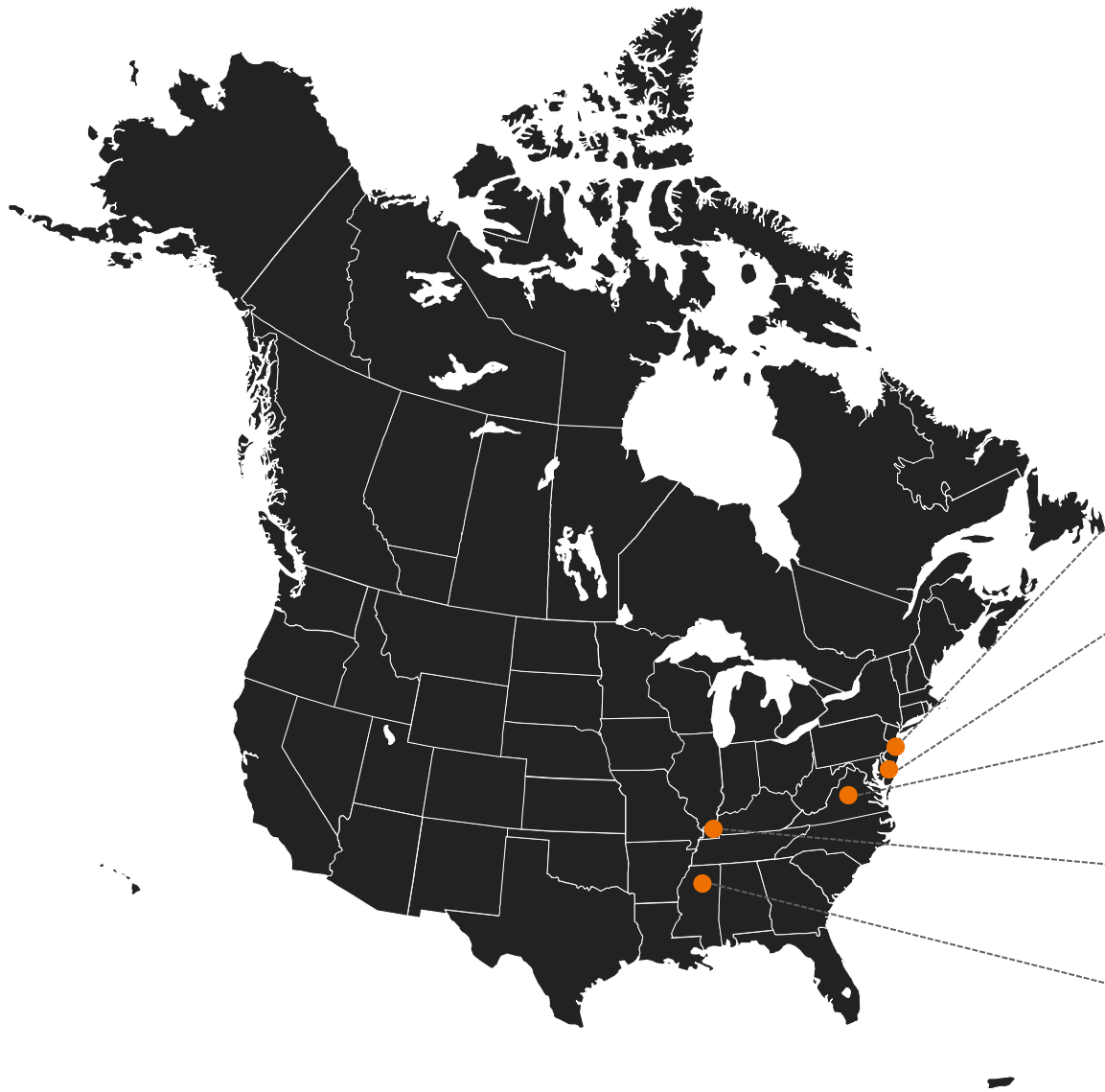
- Stage / Performance area and plaza
- Educational Opportunities
- Outdoor Classroom
- Contemplation Space
- Event Space
- Site specific artwork
- Interpretive signage and other elements





Precedent Locations

PRECEDENT LOCATIONS



A

Civil Rights Garden

Atlantic City NJ

B

Tubman-Garrett Riverfront Park

Wilmington DE

C

Memorial to Enslaved Laborers

Charlottesville VA

D

I AM A MAN Plaza

Memphis TN

E

Kelly Ingram Park

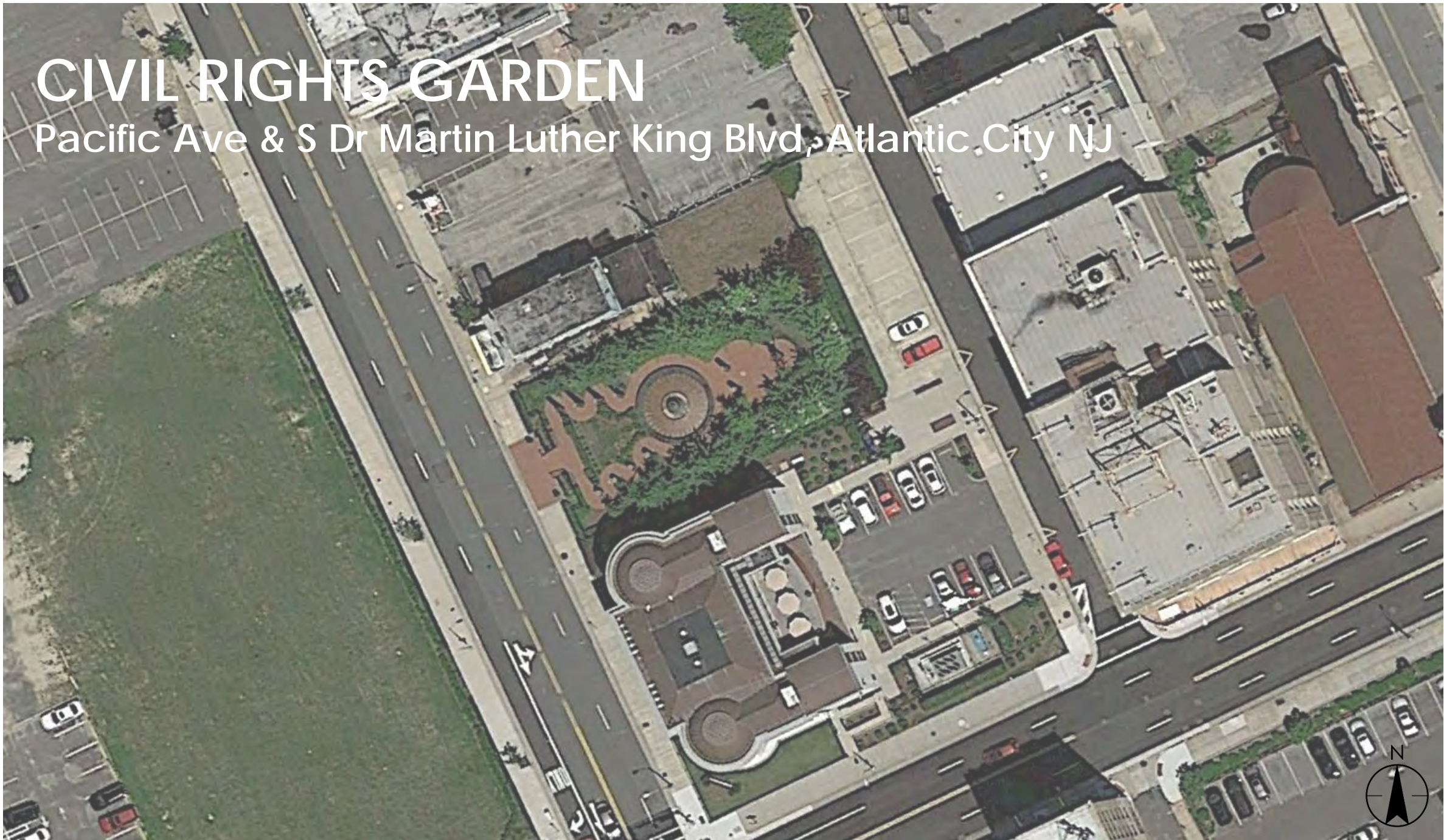
Birmingham AL



CIVIL RIGHTS GARDEN

Pacific Ave & S Dr Martin Luther King Blvd, Atlantic City NJ

PRECEDENT A





Civil Rights Garden

Year Constructed: 2002

Context: Urban Plaza (7,200 SF / 0.16 Acres)

Site Features: Brick paths, sculptures with engravings, interpretive signage/engravings, water feature, and plantings.

Cost: Not Available



Educational Space



Teaching Moments



Project Narrative

Significant Person:

The history and struggles of African-Americans were the inspiration for Civil Rights Garden, which artist Larry Kirkland created in collaboration with landscape designer Robert Preston. The Imperial red granite fountain is encircled by a black granite ring inscribed with quotes from Martin Luther King Jr.'s "I have a dream" speech. The bell rings every day at noon, recalling the speech's repeated refrain, "Let freedom ring."



Educational Space



Entrance Feature



TUBMAN-GARRETT RIVERFRONT PARK

Rosa Parks Dr, Wilmington DE





Tubman-Garrett Riverfront Park

Year Constructed: 1998

Context: Riverfront park (2.4 Acres)

Site Features: Walkway, open lawns, sculpture with plaques, plantings, lighting, benches, and gateway structure

Cost: Not Available



Entrance Feature



Harriet Tubman – Thomas Garrett Statue



Project Narrative

Significant Person:

The park serves as a gathering place “where the city formally meets the river.” Thomas Garrett lived in Wilmington’s nearby Quaker Hill neighborhood, where slaves traveling the Underground Railroad often found refuge. Riverfront Park is adjacent to the Market Street Bridge where slaves were transported to freedom. Ideal for passive recreation, park also hosts diverse public events such as the Bob Marley Festival, Riverfront Blues Festival, DuPont Riverfest and many others.



Event Space



Festivals



MEMORIAL TO ENSLAVED LABORERS

University of Virginia, Charlottesville VA





Memorial to Enslaved Laborers

Year Constructed: 2020

Context: Campus Memorial (6,155 SF/1.04 Acres)

Site Features: Walkways, engraved walls, water feature, lighting, and lawn

Cost: \$6,000,000



Contextual View



Contemplative Space



Project Narrative

Significant Location:

The memorial at the University of Virginia honors the lives, labor, and perseverance of the approximately 4,000 enslaved men, women and children who built and sustained the daily life of faculty and students at the University. The result of a collaborative design process involving UVA students, the Charlottesville community, and descendants of the enslaved, it is sited in the valley on the east side of the Lawn, directly east of The Rotunda, designed by Thomas Jefferson.

SIGNIFICANT LOCATION



Gathering Space



Memorial



I AM A MAN PLAZA

Hernando St, Memphis TN





I AM A MAN Plaza

Year Constructed: 2018

Context: Outdoor plaza adjacent to Clayborn Temple (±0.60 Acres)

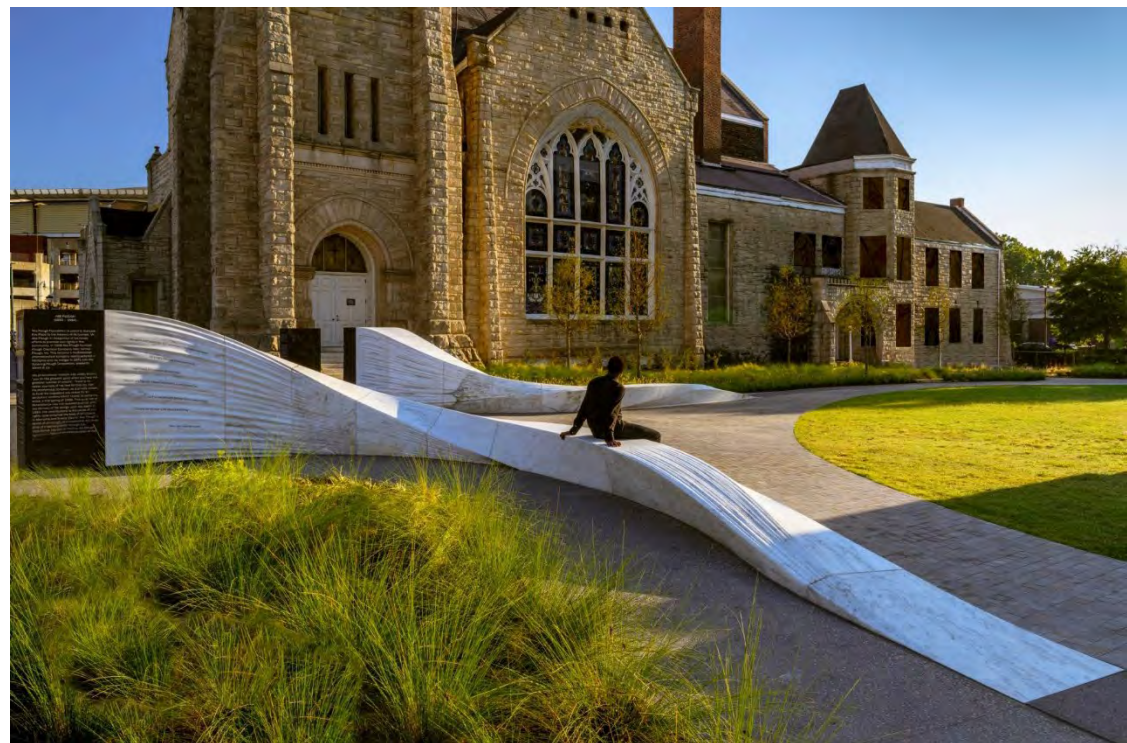
Site Features: Walkway, sculpture, plantings

Cost: \$1,500,000

SIGNIFICANT EVENT



Contextual View



Contemplative Space



Project Narrative

Significant Event:

This American Civil Rights Memorial combines sculpture, landscape, and poetry to create an interactive and educational experience. I AM A MAN Plaza is a landscape sculpture commissioned to honor the members of the pivotal 1968 Sanitation Workers' Strike and the legacy of Dr. Martin Luther King, Jr. A focal point of the Civil Rights Movement, the strike brought Dr. King to Memphis, Tennessee, in support of the Strikers, when he was assassinated. The I AM A MAN slogan came to represent the struggle for racial equality in Memphis and beyond.



Learning Experience



Memorial



KELLY INGRAM PARK

500 17th St N, Birmingham AL

PRECEDENT E





Kelly Ingram Park

Year Constructed: 1992

Context: Urban Park (4 Acres)

Site Features: Walkways, open lawn, statues/monuments, Art Installations, plantings, lighting

Cost: Not Available

SIGNIFICANT LOCATION



Plan View



Central Atrium



Project Narrative

Significant Location:

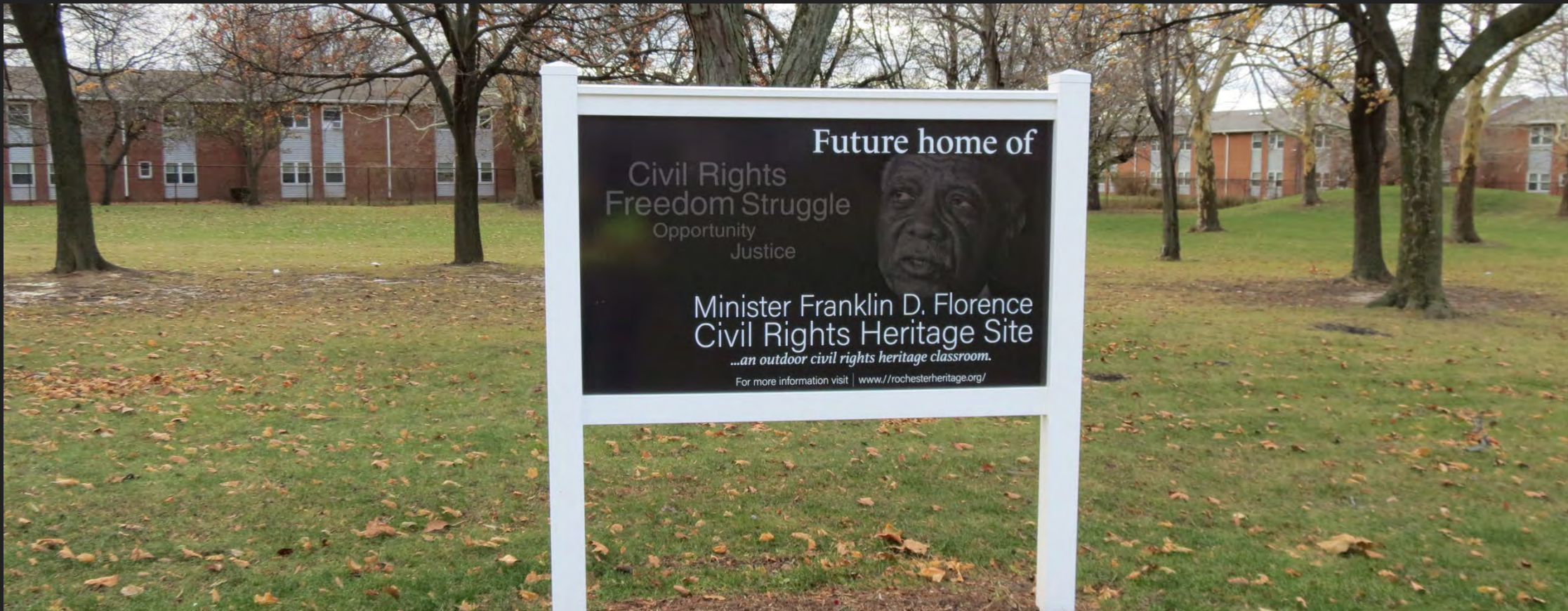
Kelly Ingram Park is an improved public park that contains emotionally powerful sculptures depicting the civil rights struggle in Birmingham. The park served as an assembly spot for activities of the Southern Christian Leadership Conference and other groups in the movement. Currently the park hosts several local family festivals and cultural and entertainment events throughout the year.



Contemplation Area and Garden



Sculptural Elements



Discussion

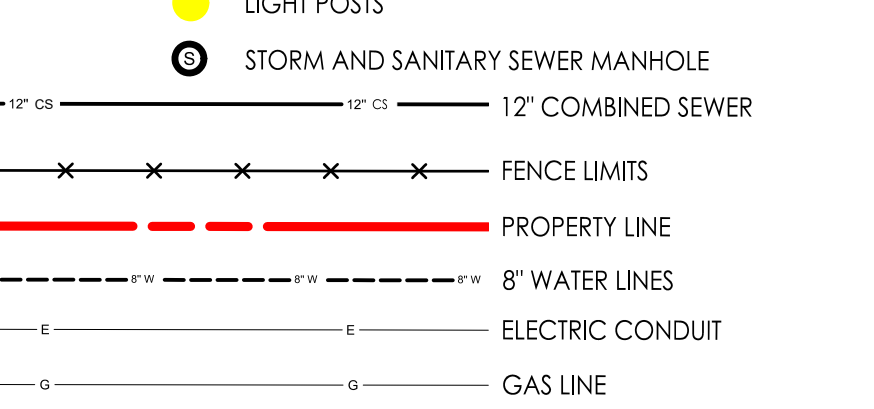
What features are important to Rochester ?



Copyright Reserved

The Contractor shall verify and be responsible for all dimensions. DO NOT scale the drawing - any errors or omissions shall be reported to Stantec without delay.

The Copyrights to all designs and drawings are the property of Stantec. Reproduction or use for any purpose other than that authorized by Stantec is forbidden.



Revision

	By	Appd.	YY.MM.DD

Issued

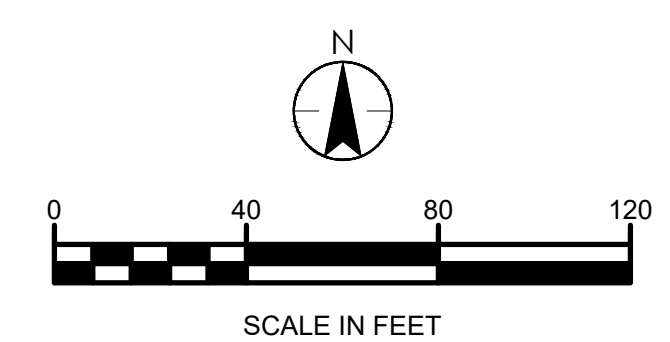
	By	Appd.	YY.MM.DD

File Name: SK100.dwg	CJP	twp	OJP	23.08.23
	Dwn.	Chkd.	Dgn.	YY.MM.DD

Title

Drawing No.	Sheet	Revision
-------------	-------	----------

0





Copyright Reserved

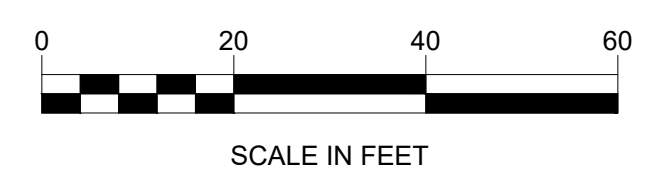
The Contractor shall verify and be responsible for all dimensions, DO NOT scale the drawing - any errors or omissions shall be reported to Stantec without delay.

The Copyrights to all designs and drawings are the property of Stantec. Reproduction or use for any purpose other than that authorized by Stantec is forbidden.

Title

0.67

0





Copyright Reserved

The Contractor shall verify and be responsible for all dimensions. DO NOT scale the drawing - any errors or omissions shall be reported to Stantec without delay.

The Copyrights to all designs and drawings are the property of Stantec. Reproduction or use for any purpose other than that authorized by Stantec is forbidden.

Legend

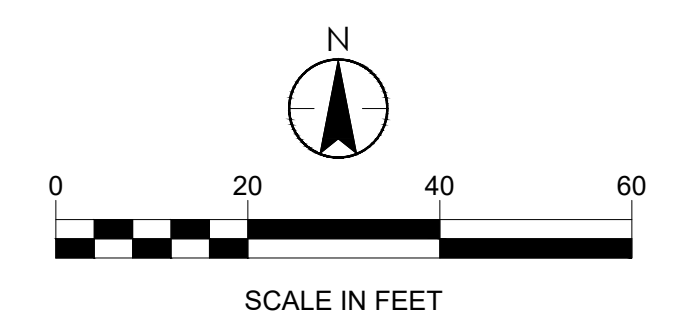
- ## Notes

Permit-Seal

Title

Project No. 192800250	Scale 1"=20'
Drawing No.	Sheet Revision

0



Copyright Reserved

The Contractor shall verify and be responsible for all dimensions. DO NOT scale the drawing - any errors or omissions shall be reported to Stantec without delay.

The Copyrights to all designs and drawings are the property of Stantec. Reproduction or use for any purpose other than that authorized by Stantec is forbidden.

Consultants

Legend

Notes

Revision

Issued

File Name: SK100.dwg

Permit-Seal

Client/Project

CITY OF ROCHESTER

FRANKLIN D. FLORENCE CIVIL
RIGHTS HERITAGE PARK
Baden Park, Rochester, NY

Title

PHOTO LOCATION MAP - SOUTH

Project No.

192800250

Drawing No.

SK300

Scale

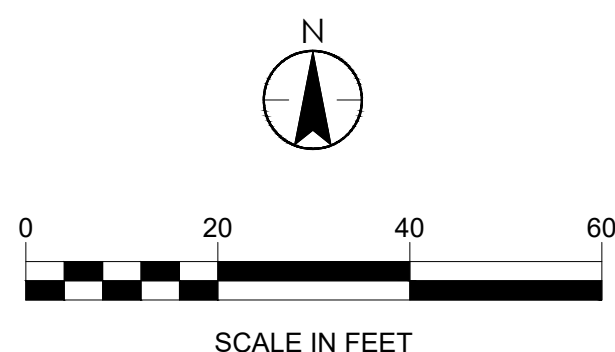
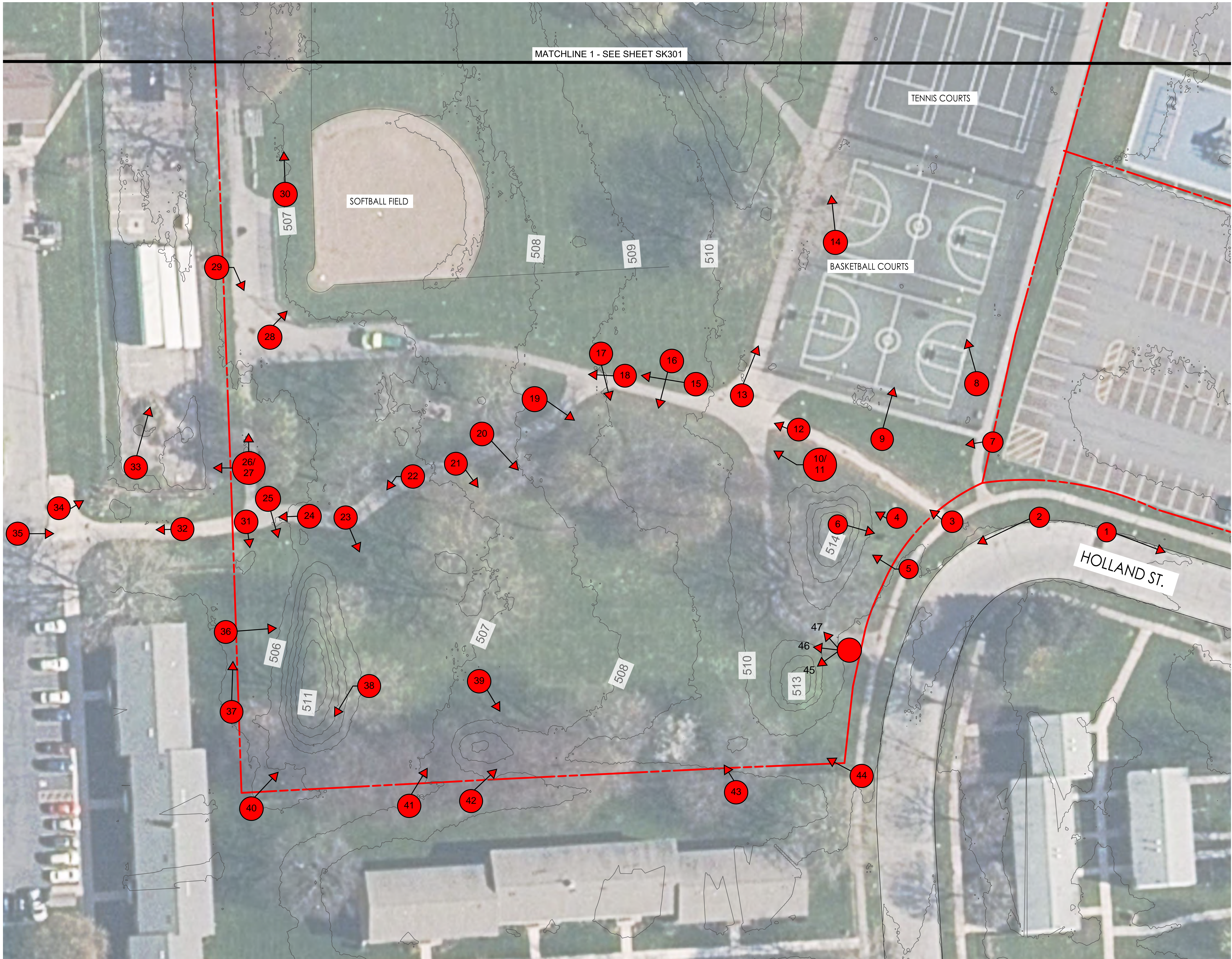
1"=20'

Sheet

4 of 7

Revision

0



Copyright Reserved

The Contractor shall verify and be responsible for all dimensions. DO NOT scale the drawing - any errors or omissions shall be reported to Stantec without delay.
The Copyrights to all designs and drawings are the property of Stantec. Reproduction or use for any purpose other than that authorized by Stantec is forbidden.

Consultants

Legend

Notes

Revision		By	Appd. YY.MM.DD
Issued		By	Appd. YY.MM.DD

File Name: SK100.dwg	CJP	TMP	CJP	23.08.23
	Dwn.	Chkd.	Dgn.	YY-MM-DD

Permit-Seal

Client/Project

CITY OF ROCHESTER

FRANKLIN D. FLORENCE CIVIL
RIGHTS HERITAGE PARK
Baden Park, Rochester, NY

Title

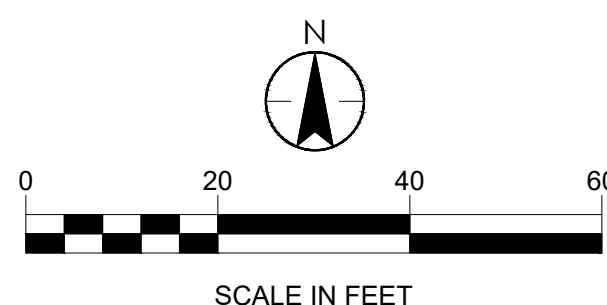
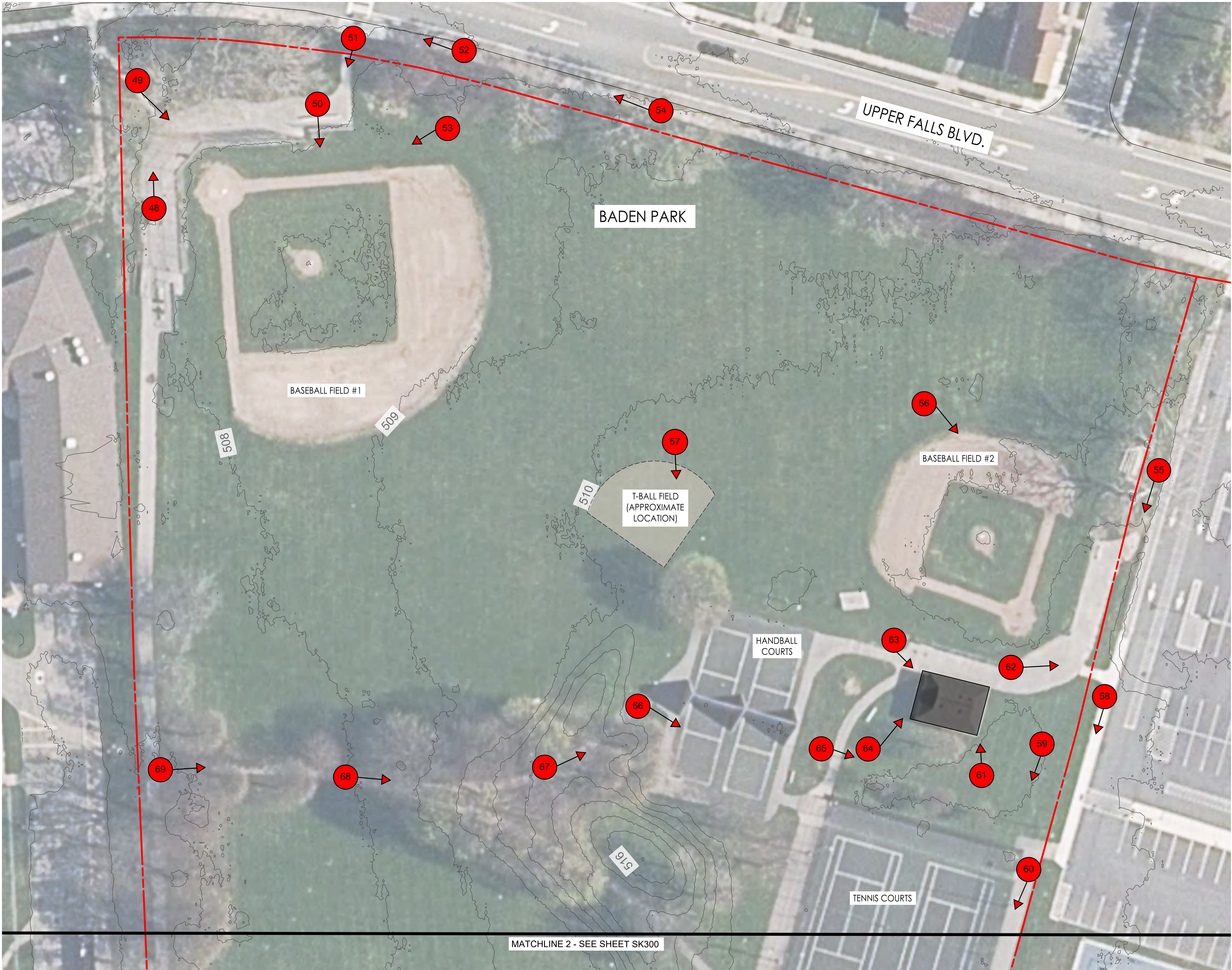
PHOTO LOCATION MAP - NORTH

Project No.	Scale	
192800250	1"=20'	
Drawing No.	Sheet	Revision

SK301

5 of 7

0



Revision	By	Appd.	YY.MM.DD
Issued	By	Appd.	YY.MM.DD
File Name: SK100.dwg	OJP Dwn.	TMP Chkd.	OJP Dsgn. 23.08.23 YY.MM.DD

Client/Project
CITY OF ROCHESTER

FRANKLIN D. FLORENCE CIVIL
RIGHTS HERITAGE PARK
Baden Park, Rochester, NY

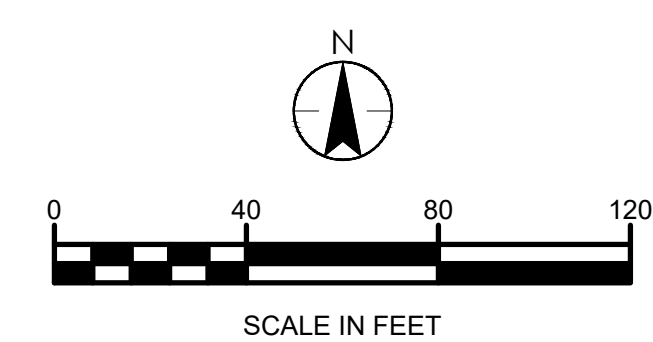
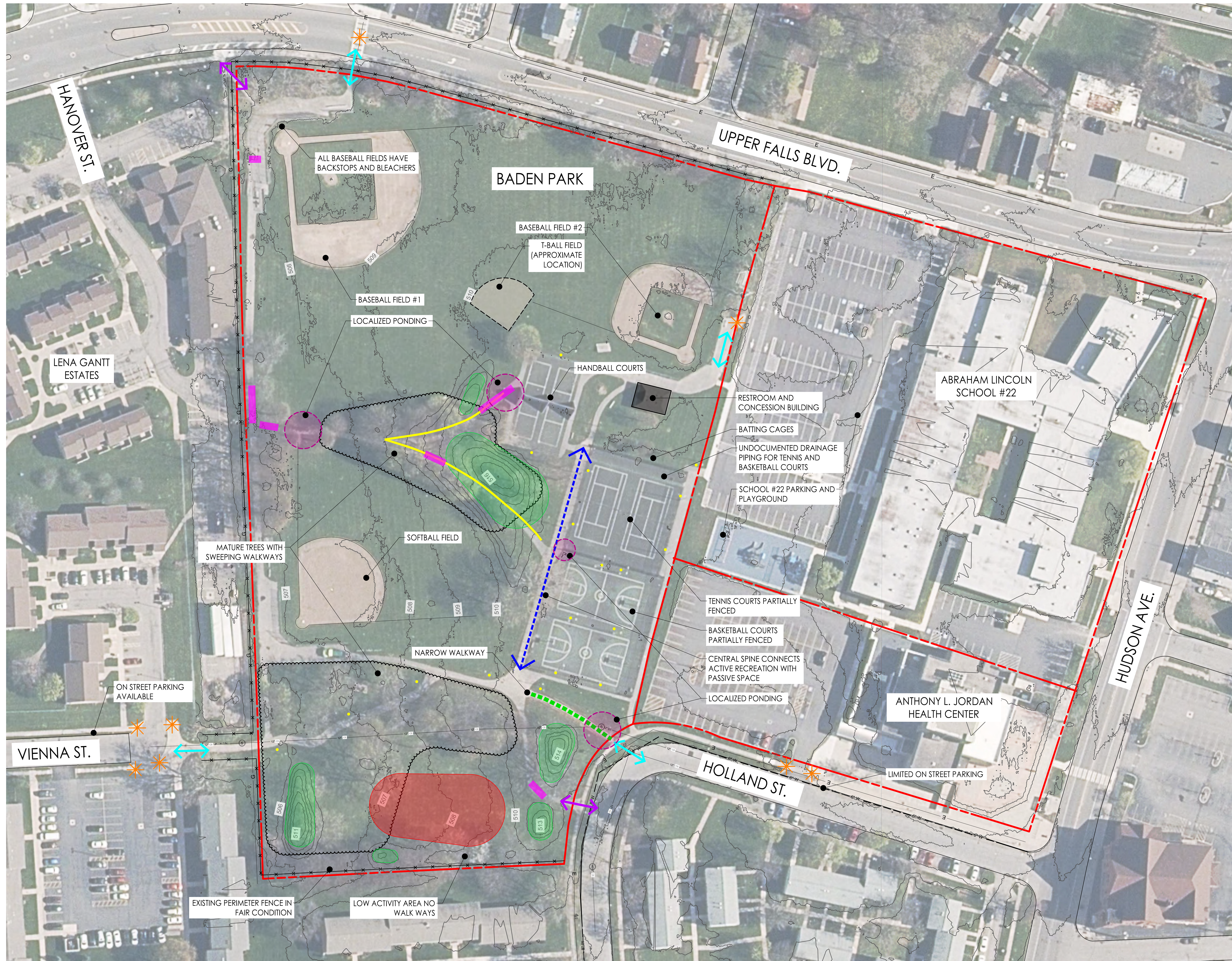
Title _____

SITE ANALYSIS MAP

Project No. _____ Scale _____

Drawing No.	Sheet	Revision
-------------	-------	----------

SK400 6 of 7 0



Copyright Reserved

The Contractor shall verify and be responsible for all dimensions. DO NOT scale the drawing - any errors or omissions shall be reported to Stantec without delay. The Copyrights to all designs and drawings are the property of Stantec. Reproduction or use for any purpose other than that authorized by Stantec is forbidden.

Consultants

Legend

Notes

Revision

Issued

Permit-Seal

Client/Project

CITY OF ROCHESTER

FRANKLIN D. FLORENCE CIVIL
RIGHTS HERITAGE PARK
Baden Park, Rochester, NY

Title

EXISTING TREE OVERVIEW

Project No.

192800250

Scale

1"=30'

Drawing No.

SK500

Sheet

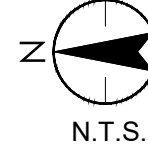
7 of 7

Revision

0

KEY NOTES:

- A. GOOD STAND. MATURE LONDON PLANE AND LINDEN TREES.
B. GOOD STAND. LINDEN AND KATSURA TREES.
C. OVERALL GOOD STAND OF MATURE TREES. 1-3 HAVE POTENTIAL DISEASE. DEAD BRANCHES AND STRESS AT TRUNK. NEED MAINTENANCE. MIX OF LONDON PLANE, LINDEN, LOCUST, OAK, MAPLE. STAND ALONE CHERRY 'KWANZAN' POOR CONDITION.
D. OVERALL GOOD STAND OF MATURE TREES. NEED MAINTENANCE. MIX OF MAPLE, LOCUST, LINDEN, LONDON PLANE, HAWTHORN, ZELKOVA, TULIP TREE.
E. OVERALL GOOD STAND OF MATURE TREES. NEED MAINTENANCE. MIX OF PEAR, LOCUST, LINDEN, LONDON PLANE. DENSE GROWTH IN SOUTHWEST CORNER PREVENTS VISIBILITY.
F. FOUR (4) YOUNG CHERRY TREES IN FAIR CONDITION. HEDGE ALONG NORTHERN FENCE.



SPECIMEN TREE
NORWAY MAPLE
GOOD CONDITION

DOGWOOD TREE
FAIR CONDITION

