

1 LUX STREET GATEWAY SCHEMATIC PLAN

NO.	DATE	DESCRIPTION	BY	CHKD	APP'D
1	JULY 2013	AS SHOWN	TEL	TEL	TEL

CITY OF ROCHESTER, NEW YORK
PORTLAND AVENUE
REVITALIZATION
LANDSCAPE DEVELOPMENT SHEETS

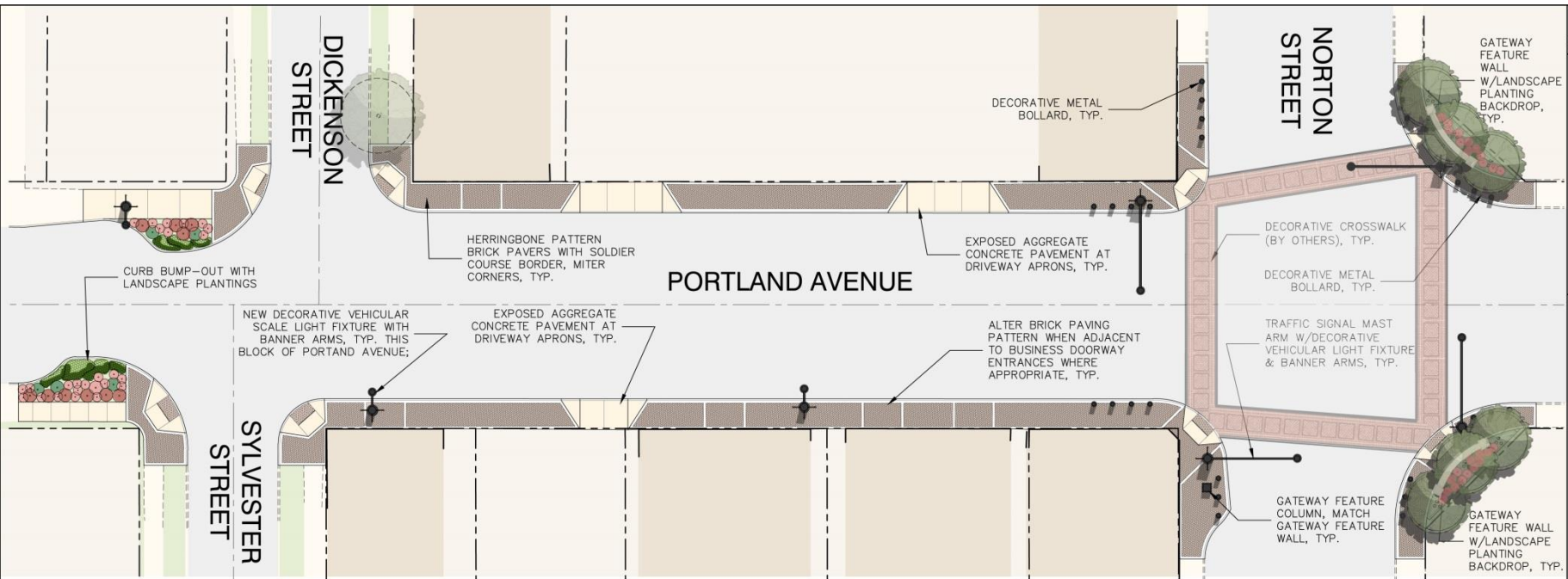


the LA group
Landscape Architecture
and Engineering, PC
40 Longley
Salisbury Springs
New York 14606
Phone: 416-410-1100
Fax: 416-410-1101
www.thelagroup.com



Prepared by: *the LA group*
Contract No. *12-00000000000000000000*
2013 Land Use Change Order
Rochester, NY 14625
This drawing is 05/31/2013-1115
Rev 05/31/2013-1301
© 2013 0000-0000-00000000000000000000
DRAWING NO.

SK-1



NO.	DATE	REVISION	DESCRIPTION
1	NOV 2013	BY	SCALE AS SHOWN
		DESIGNED BY	DATE
		CHECKED BY	DATE
		DESIGNED BY	DATE
		CHECKED BY	DATE

CITY OF ROCHESTER, NEW YORK
PORTLAND AVENUE
REVITALIZATION
LANDSCAPE DEVELOPMENT SHEETS



the LA group
Landscape Architecture
and Engineering, PC
400 Albany
Saratoga Springs
New York 12042
P: 518-486-6000
F: 518-486-6001
www.lagroup.com



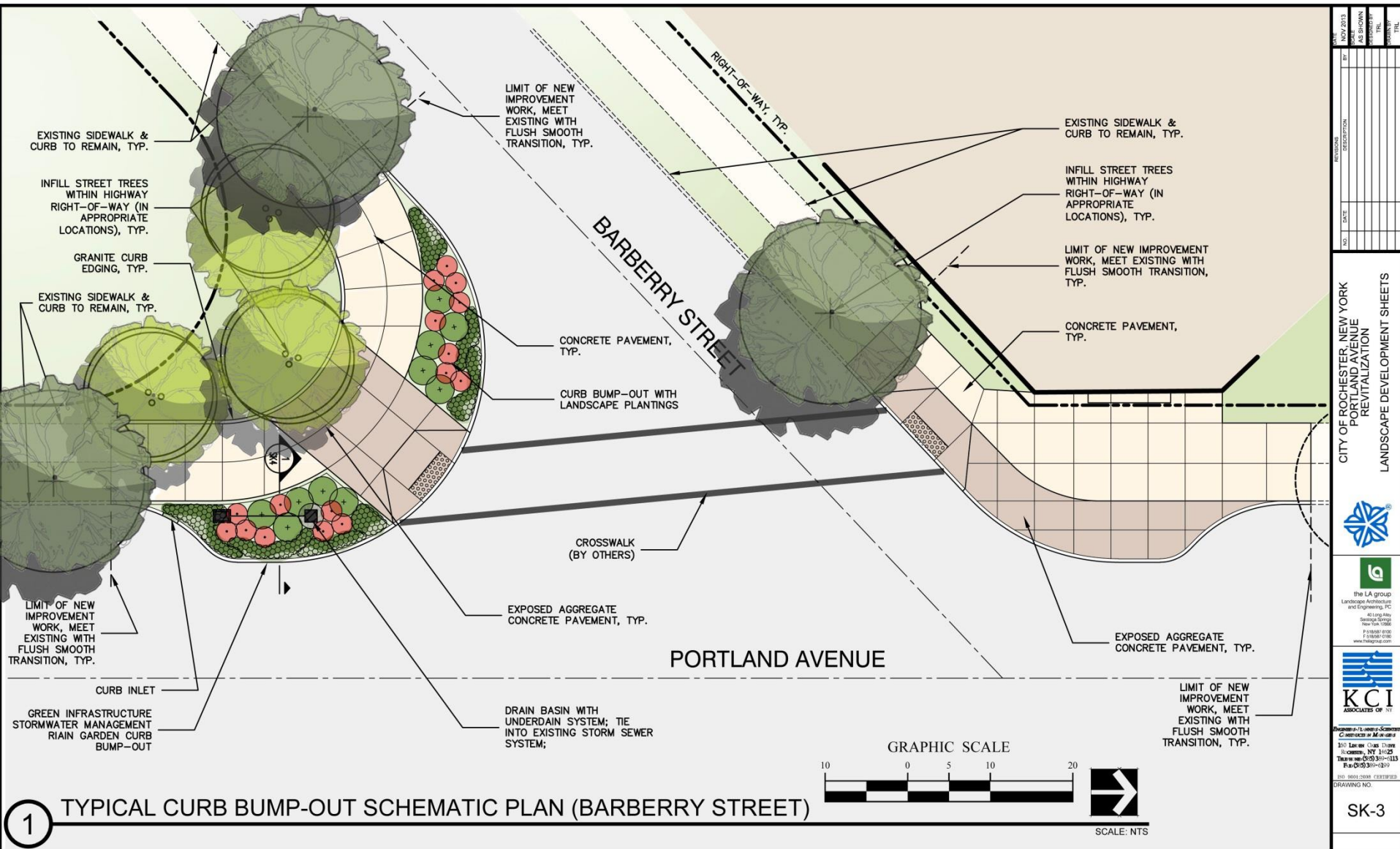
Engineers, Planners, Scientists
Construction Managers
300 Lewis Drive
Rochester, NY 14623
Telephone: (585) 581-6113
Fax: (585) 581-6199

ISO 9001:2008 CERTIFIED
DRAWING NO.

SK-2

1 NORTON STREET GATEWAY SCHEMATIC PLAN





NO.	DATE	REVISION
1	JULY 2013	AS SHOWN
2		TEL
3		TEL

CITY OF ROCHESTER, NEW YORK
PORTLAND AVENUE
REVITALIZATION
LANDSCAPE DEVELOPMENT SHEETS



the LA group
Landscape Architecture
and Engineering, PC

40 Longview
Savanna, NY 14622
P: 516-438-6100
F: 516-438-6101
www.lagroup.com



Registered Professional Engineer
Contractors in Mechanical
300 East Main Street, Suite 1000
Rochester, NY 14602
Tel: 585-593-1115
Fax: 585-593-1116

ISO 9001:2008 CERTIFIED
DRAWING NO.

SK-3



SCALE: NTS



SCALE: NTS



SCALE: NTS

CITY OF ROCHESTER, NEW YORK
PORTLAND AVENUE
REVITALIZATION

LANDSCAPE DEVELOPMENT SHEETS



the LA group
Landscape Architecture
and Engineering, PC
40 Long Alley
Saratoga Springs
New York 12866
P 518/587-8100
F 518/587-0180
www.thelagroup.com



**BRUNNEN & FLANNERY SCIENTIFIC
CONSTRUCTIVE MANAGEMENT**
150 LOCUST OAK DRIVE
ROCHESTER, NY 14625
TELEPHONE: (585) 389-6113
FAX: (585) 389-6199
ISO 9001:2008 CERTIFIED
DRAWING NO.

DRAWING NO.

1. *Journal of the American Medical Association*, 1997; 277: 1039-1043.

OK 4

SK-4

•

Abstract
