



JOSANA

rail to trail feasibility study

Public Meeting #2

January 27, 2015

6:00 – 6:30 PM

Presentation

6:30 – 7:30 PM

Open House

Meeting Agenda

- **Welcome and Introductions**
- **Project Overview**
- **Understanding the proposed “Rail to Trail” corridor**
- **Preliminary Trail Concepts**
- **Next Steps**
- **Open House: WE WANT YOUR FEEDBACK!**



Introductions

- **City of Rochester Department of Neighborhood and Business Development**
- **Genesee Transportation Council**
- **Bergmann Associates**
- **RAVI Engineering**
- **Steering Committee**

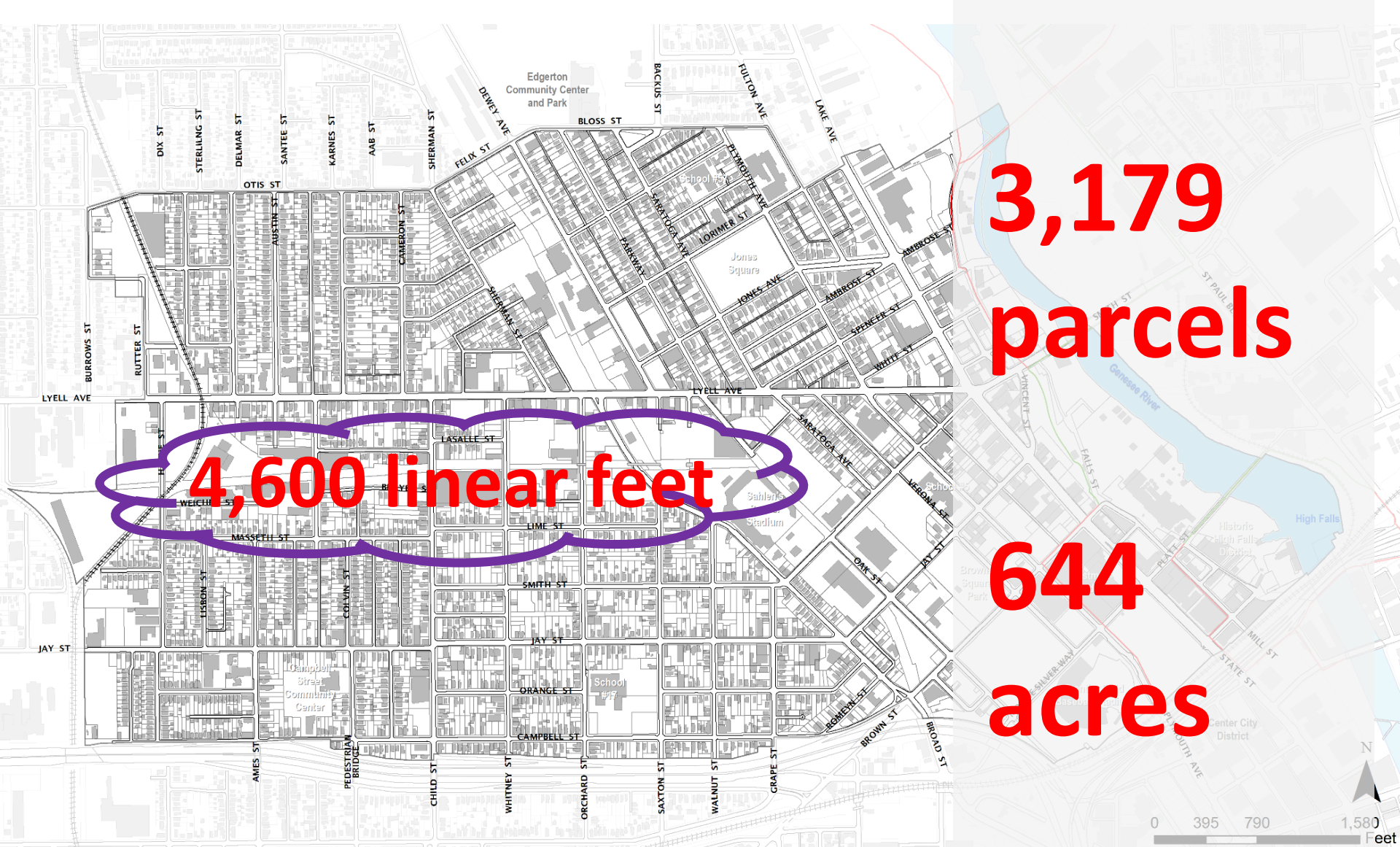




project overview



Where is the study area?



Related Planning Studies

LYLAKS Brownfield Opportunity Area



Rochester Bicycle Master Plan



JOSANA Master Plan



High Falls Pedestrian Connectivity



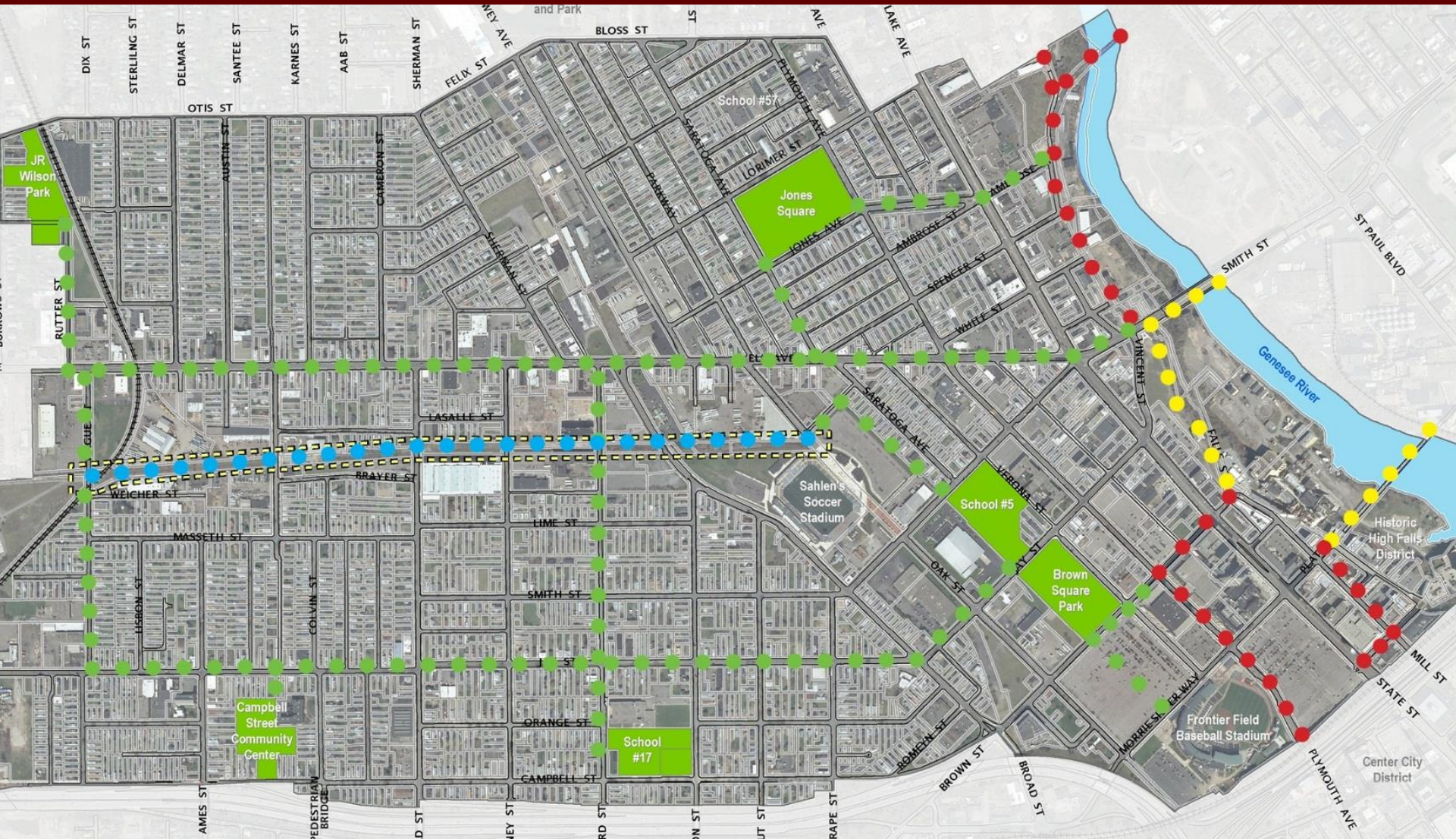
Project Objectives

Assist the City in identifying the feasibility of corridor acquisition and redevelopment

1. Identify preferred conceptual trail design and programming
2. Strengthen the area's transportation options
3. Identify neighborhood and regional connections



Neighborhood Linkages



● ● ● Proposed JOSANA Trail

● ● ● Existing Trails

● ● ● Proposed Trail Connections

● ● ● Proposed Trail Connections Recommended in the LYLAKS BOA Master Plan

Regional Trail Connections



Phase 1: Inventory and Analysis

- Data Collection
- Base Mapping
- Inventory and Analysis
 - ✓ Neighborhood Characteristics
 - ✓ Circulation
 - ✓ Environmental
 - ✓ Utilities
 - ✓ Ownership
- Design Standards
- PAC Meeting
- Public Meeting #1



Public Meeting #1

- September 15th at Charles Settlement House
- Small Group “Brainstorm” Session
- Walking Tour of the Trail



Phase 2: Alternative Development

- Alternative Trail Routes
 - ✓ Connections/Destinations
 - ✓ Trail surface/features
 - ✓ Trailheads
 - ✓ Interpretation
 - ✓ Viewsheds
 - ✓ Natural features
 - ✓ Opportunities and challenges
- PAC Meeting #2 and #3
- Public Meeting #2



Phase 3: Final Preliminary Design/Report

- Final Trail Alignment
- Cost Estimates
- Environmental Assessment
- PAC Meeting #4
- Final Report
- Executive Summary
- PAC Meeting #5





what we've learned



What We've Learned: Ownership

Several Owners of the Rail Corridor

- CSX Corporation
- OTB (Under Truss Bridge)
- Former Owner Rochester Rhinos LLC /
Potential for City Ownership

What We've Learned: Ownership



What We've Learned: Walking the Trail

Hague Street Intersection

- Active rail
- Tight ROW
- Existing signage
- Railroad signal
- Utility poles



What We've Learned: Walking the Trail

Hague Street to Murray Street

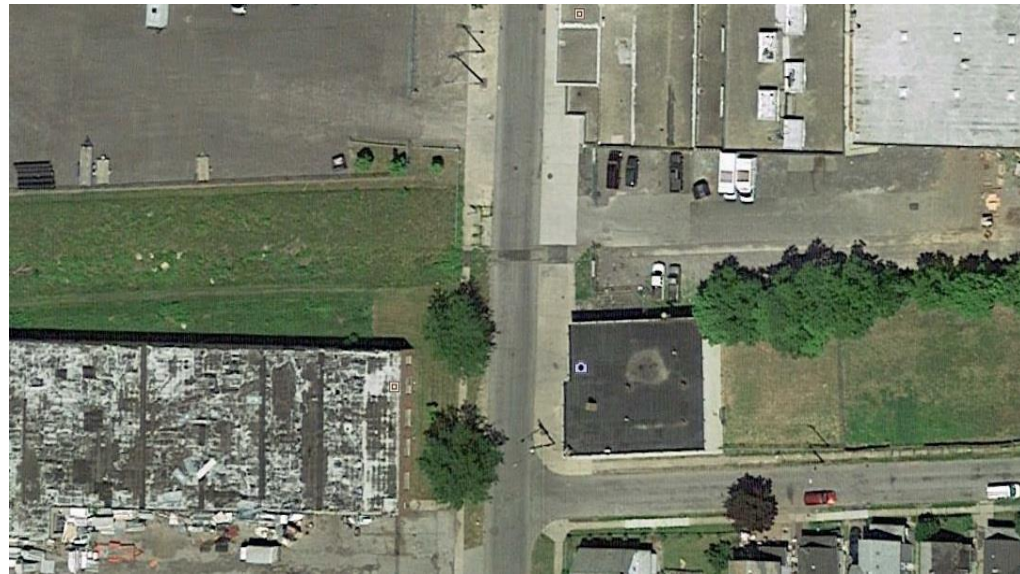
- 66 feet wide
- Encroachment by adjacent businesses
- Lined by active industrial uses
- South edge lined by building face
- Generally flat with open views
- At grade segment



What We've Learned: Walking the Trail

Murray Street Intersection

- ROW 65 feet wide
- Sidewalks on both side of the street with stone curbs
- Railroad tracks still exist in the pavement crossing
- Corridor is blocked by fence on east side



What We've Learned: Walking the Trail

Murray Street to Child Street

- 66 to 93 feet wide
- Corridor is blocked at Murray Street
- Lined by a mix of industrial, residential, and vacant uses
- Segment is flat and enclosed by mature trees
- At-grade segment



What We've Learned: Walking the Trail

Child Street Intersection

- ROW 65 feet wide
- Sidewalks on both sides of the street with stone curbs
- One set of railroad tracks still exist in the pavement
- Parking within the corridor on both sides of the street
- Route to and from I-490. Perceived higher traffic.



What We've Learned: Walking the Trail

Child Street to Whitney Street

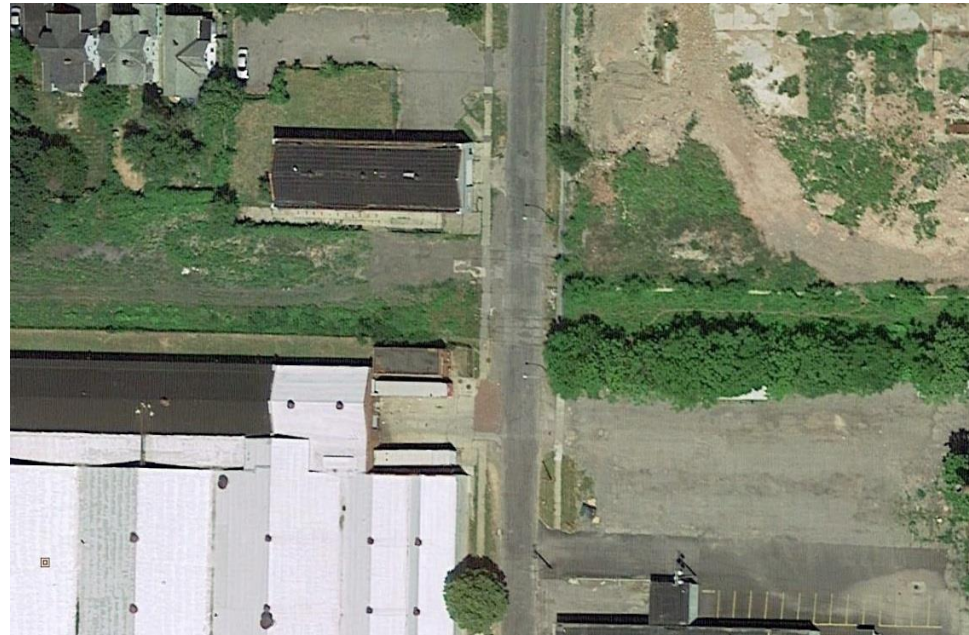
- 76 feet wide – widest and shortest segment
- Lined by industrial and residential uses to the north, one large industrial building to the south
- Segment is flat with open views
- Mid-point of the corridor
- At-grade segment



What We've Learned: Walking the Trail

Whitney Street Intersection

- ROW 60 feet wide
- Sidewalks on both sides of the street
- Three sets of railroad tracks in the pavement crossing
- Evidence of medina cobbles in road crossing
- Parking in the corridor on the western side of the street



What We've Learned: Walking the Trail

Whitney Street to Orchard Street

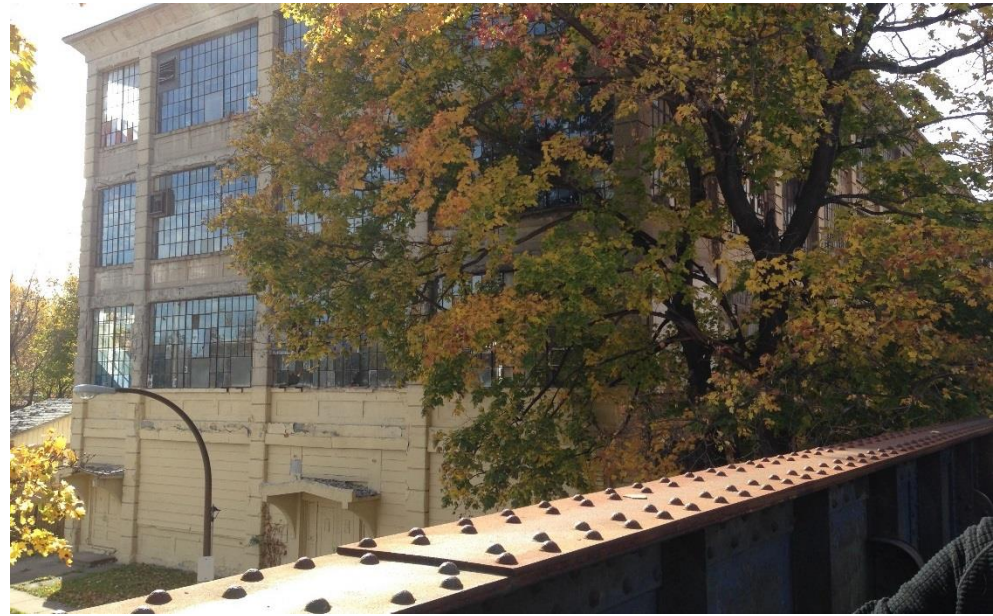
- 38 feet wide narrowest segment
- Demolition of the Orchard Whitney Site is underway, will impact views
- Orchard Whitney Site is higher than corridor. Adjacent 4' wall
- Greater sense of enclosure



What We've Learned: Walking the Trail

Orchard Street Intersection

- Former railroad bridge crossing Orchard Street – appears to be stable and structurally adequate for pedestrian trail.
- Open views north and south
- Adjacent to notable historic building – former box factory



What We've Learned: Walking the Trail

Orchard Street to Broad Street

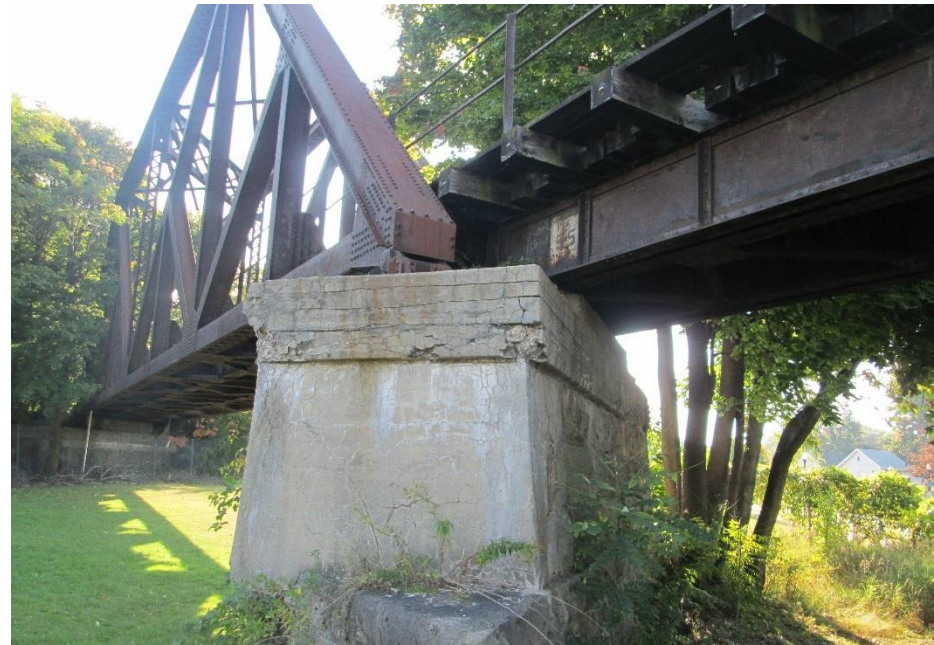
- 65 feet wide
- Segment is elevated with a steep embankment
- Secluded due to dense trees and shrubs
- Invasive species
- Potential views



What We've Learned: Walking the Trail

Broad Street Intersection

- Two former railroad bridges crossing Broad Street and former Erie Canal bed. Further inspection needed for steel pier columns (impact damage and section loss)
- Land underneath truss bridge owned by OTB
- Views of Sahlen's Stadium, Kodak Tower, and downtown



What We've Learned: Walking the Trail

Broad Street to Oak Street

- 65 feet wide
- Elevated with a steep embankment
- Dense tree and shrub cover
- Bridge over the former Moore Street road alignment
- Fence separates corridor from Sahlen's Stadium
- Spur trestle remnants
- Abrupt steep termination to corridor





preliminary design concepts



What we heard

What amenities would you like to see incorporated into the trail?

- **Trailhead Parking**
- **Playground**
- **Highlight Rail Bridges, Specifically the Broad Street Bridge**
- **Benches Along the Trail**



What we heard

What design features (signage, pocket parks, etc.) would make you more likely to use the trail?

- **A Park or Main Focal Point Located on Trail**
- **Trail Needs to be Designed to be Very Open and Visible to Encourage Safety**
- **Lighting**
- **Security Cameras**
- **Wayfinding and Interpretive Kiosks**
- **Establish a Market Near the Trail**
- **Strong Connections to Schools, Parks, other trail systems, and Community Centers**

The TrailRoad Concept



Preliminary Concept



LEGEND

1. Hague Street Connection
2. Zigzag Fence
3. Railroad Ties Embedded in Pavement
4. Existing Trees to Remain and Pruned
5. Proposed Trees
6. Sunflower / Wildflower Area
7. Mowed Turf
8. Potential Skate Park Elements
9. Murray Street Intersection Treatment
10. Trailhead Parking

40 20 0 40 80



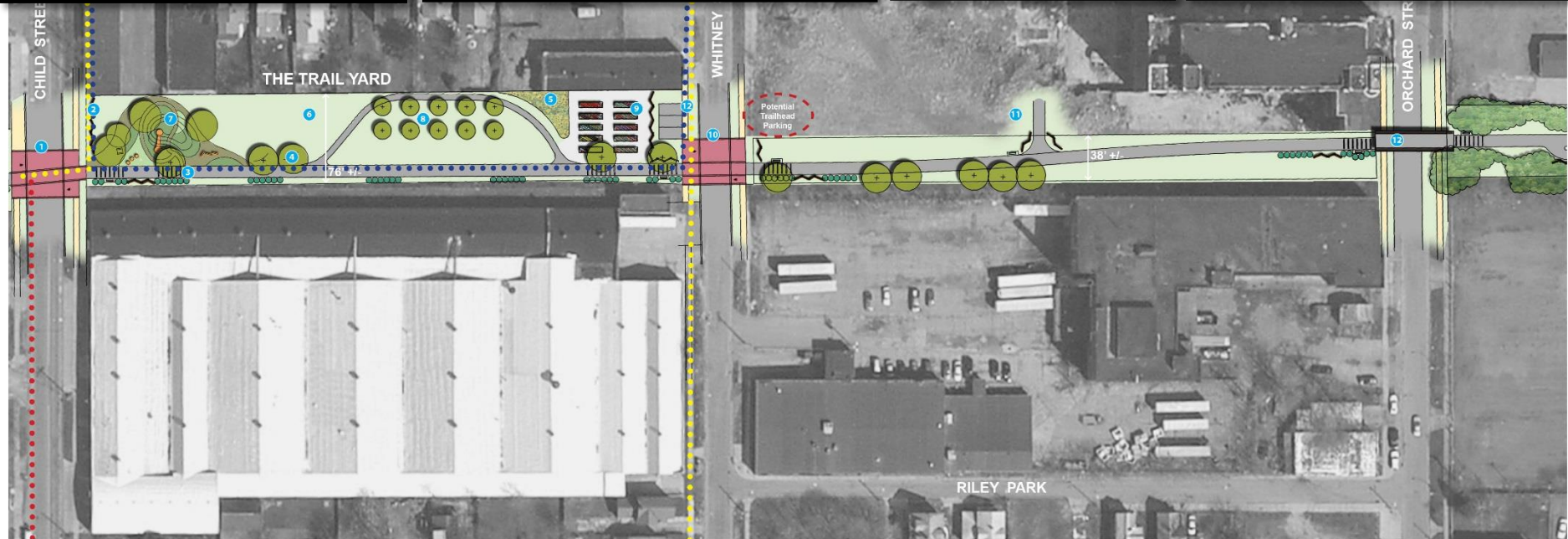
Preliminary Concept



LEGEND

1. Murray Street Intersection Treatment
2. Zigzag Fence
3. Railroad Ties Embedded in Pavement and Grass
4. Existing Trees to Remain and Pruned
5. Proposed Trees
6. Sunflower / Wildflower Area
7. Mowed Turf
8. Potential Connection to Brayer Street
9. Potential Connection to Texas Street
10. Child Street Intersection Treatment

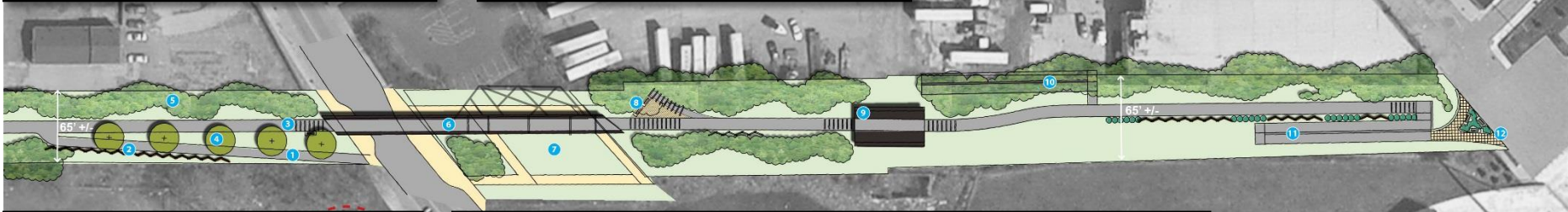
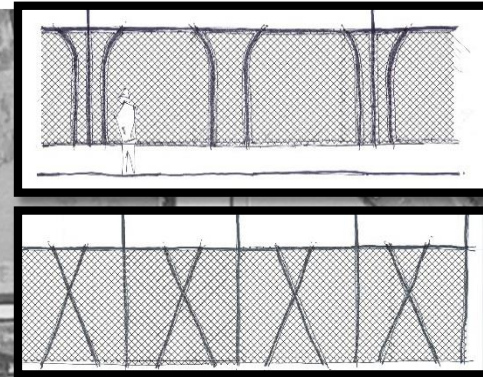
Preliminary Concept



LEGEND

1. Child Street Intersection Treatment
2. Zigzag Fence
3. Railroad Ties Embedded in Pavement and Grass
4. Proposed Trees
5. Sunflower / Wildflower Area
6. Mowed Turf
7. Natural Play Area
8. Fruit Trees "Orchard"
9. Community Garden Raised Planters
10. Whitney Street Intersection Treatment
11. Potential Connection to Orchard / Whitney Site
12. Orchard Street Railroad Bridge Rehabilitation
13. Trailhead Parking

Preliminary Concept



LEGEND

1. Pedestrian Connection from Broad Street
2. Zigzag Fence
3. Railroad Ties Embedded in Pavement and Grass
4. Proposed Trees
5. Existing Trees to Remain and Pruned
6. Broad Street Railroad Bridge Rehabilitation
7. Potential Plaza / Gathering Space Under Railroad Bridge
8. Viewing Platform and Interpretive Area at Location of Rail Spur Remnants
9. Moore Street Railroad Bridge Rehabilitation
10. Potential Connection to Future Development
11. Pedestrian Connection to Oak Street / Sahlen's Stadium
12. Entry Plaza / Trailhead

40 20 0 40 80

Example Bridge Treatments



Existing Bridge



Solar Accent Lighting



Trail Branding on Bridge Idea (1)



Trail Branding on Bridge Idea (2)

Intersection Treatments & Amenities



Enhanced Crossing at Intersection



Trail Kiosk / Interpretive Signage



Pedestrian Trail Gateway



Pedestrian Trail Gateway



Vehicular Trail Gateway

We Want to Hear From You!

- What would get you to use the trail?
- **Which elements of the proposed concepts do you like?**
- Which elements don't you like?
- **Are there amenities that you would like to see added?**
- Are there destinations you would take the trail to?

