

April 6, 2016

2015 Crime Stats for Rochester, NY

ROCHESTER POLICE DEPARTMENT
Chief Michael Ciminelli

2015 Part I Crime

Crime Type				2015	
	2014	2015	% Change	5-Yr. Avg.	% Change from 5-Yr.
Murder	35	36	2.9%	37.0	-2.7%
Rape	111	72	-35.1%	100.6	-28.4%
Robbery	709	654	-7.8%	798.4	-18.1%
Agg. Assault	779	900	15.5%	1,048.8	-14.2%
<i>Violent Crime Total</i>	<i>1,634</i>	<i>1,662</i>	<i>1.7%</i>	<i>1,984.8</i>	<i>-16.3%</i>
Burglary	2,138	1,762	-17.6%	2,891.0	-39.1%
Larceny	6,105	5,852	-4.1%	7,012.0	-16.5%
MV Theft	596	651	9.2%	641.0	1.6%
<i>Property Crime Total</i>	<i>8,839</i>	<i>8,265</i>	<i>-6.5%</i>	<i>10,544.0</i>	<i>-21.6%</i>
Total Part I Crime	10,473	9,927	-5.2%	12,529.0	-20.8%

Key Part I Crime Challenges in 2015

■ Increase in Aggravated Assaults

- Up 15.5% overall from 2014
- 20.3% yearly increase in shooting victims
- Menacing 2nd (threats with a weapon) are up 24.5% from 2014

■ Increase in Shooting Victims

- Up roughly 15% from the 5-year and 10-year averages
- 2nd highest total of individuals shot in a multiple-victim event since 2000

■ Increase in Motor Vehicle Theft

- Up 9.2% from 2014



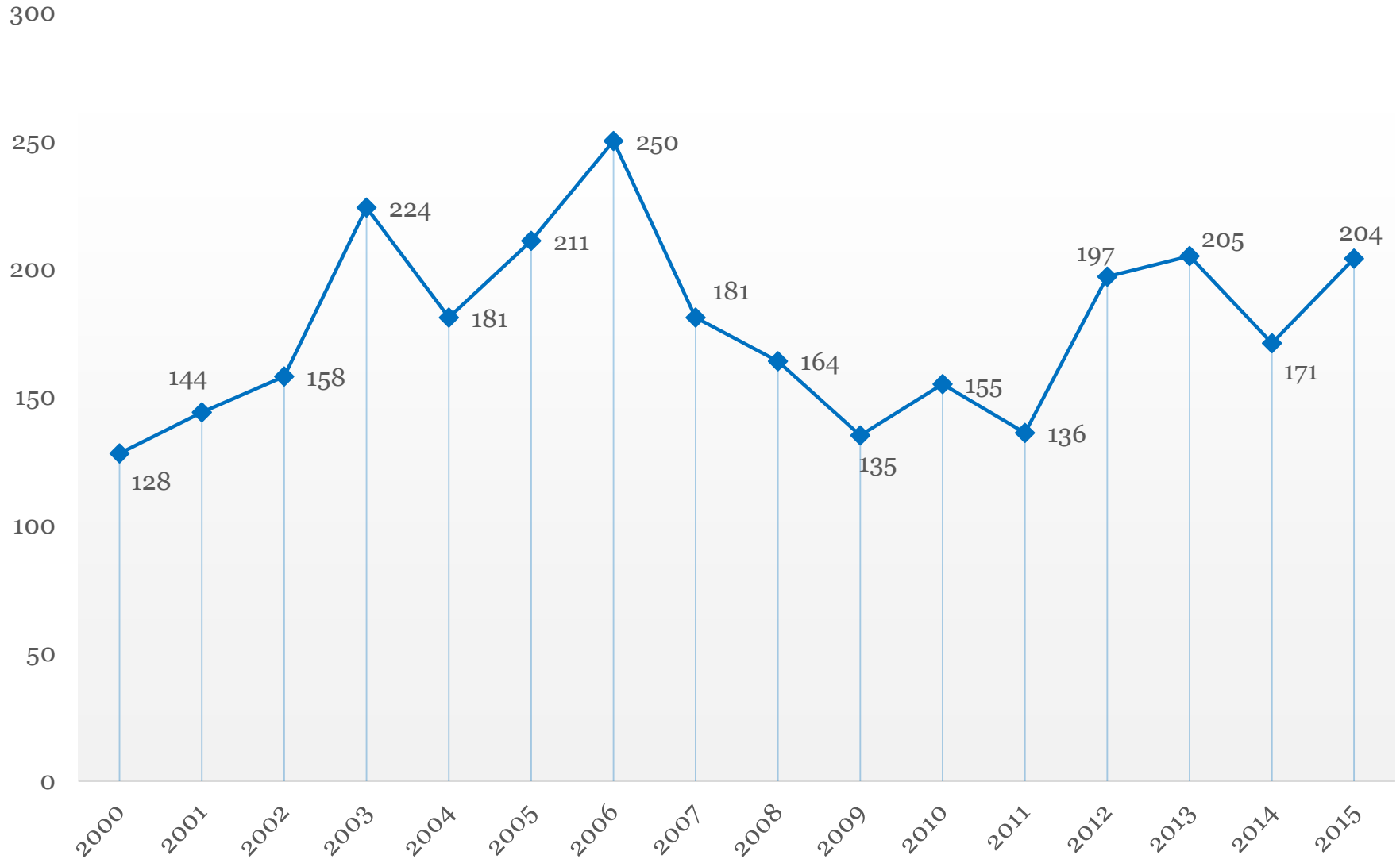
Aggravated Assault

Year	Aggravated Assault
2015	900
2014	779
2013	940
2012	1,104
2011	1,148
2010	1,273
2009	1,071
2008	1,103
2007	1,147
2006	1,193

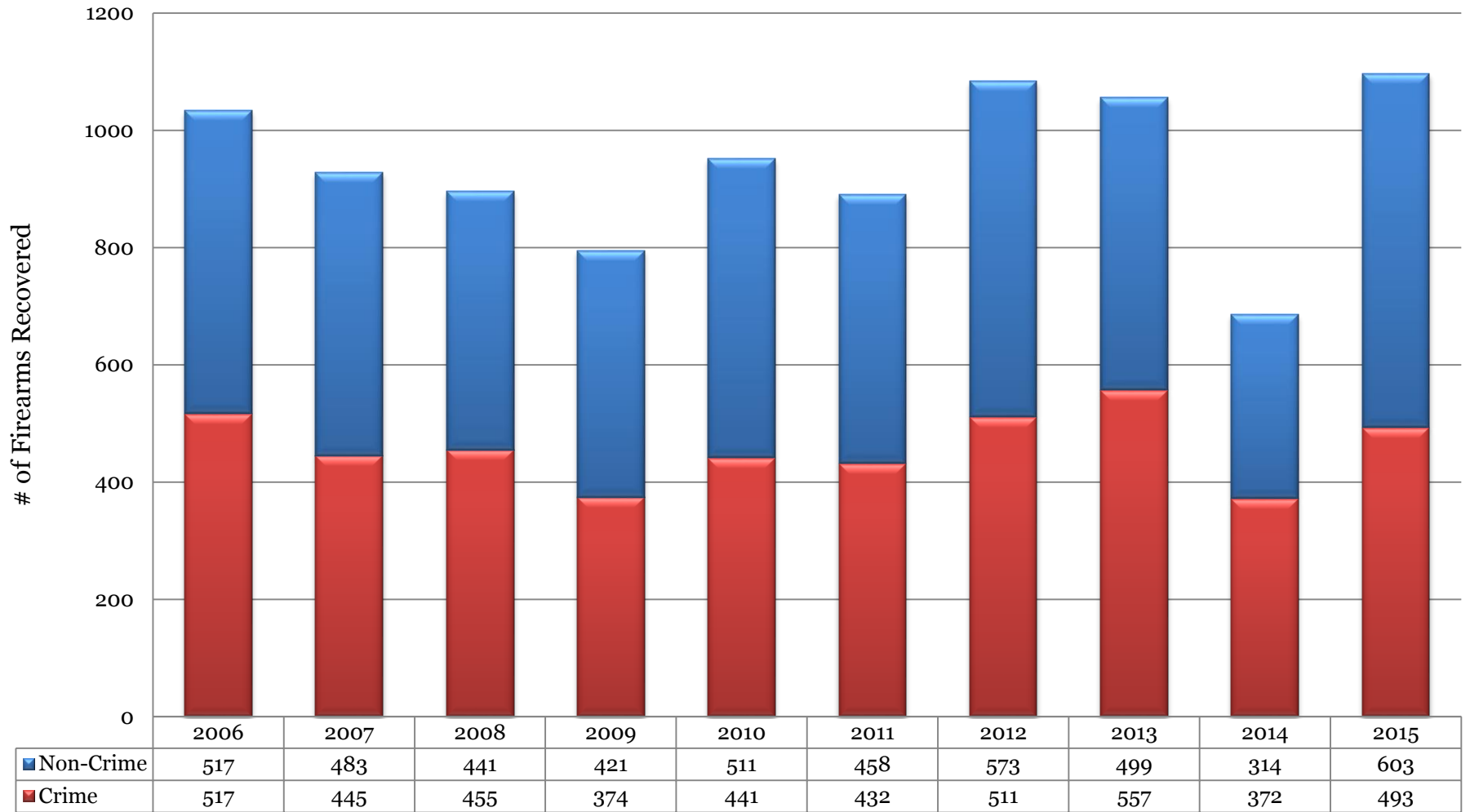
Note: Due to a reporting change, data prior to 2005 is not comparable to current totals-previous totals did not count menacing.

- Increased 15.5% from 2014 but still 14.2% lower than the 5-yr avg.
- 48.0% of all aggravated assaults involve only a threat of violence with a weapon (Menacing 2nd)
 - Indicative of interpersonal disputes
 - No actual injury occurs
 - Consistent level over past 5 years
- Weapon type in physical assaults:
 - 39.4% involved a knife
 - 33.1% involved a firearm
 - 7.8% involved no weapon
- Non-Random Violence: 58.3% of aggravated assaults involve a victim and suspect who know each other (acquaintance or intra-family)
 - 9.4% of all aggravated assaults occur within the family
 - 21.5% of all aggravated assaults involve an intimate partner
 - Relationship is unknown or not given in 23.7% of cases

Shooting Incidents by Year (2000-2015)



Gun Recoveries by Year: 2006-2015



Key Part I Crime Successes in 2015

- **Lowest Part I Crime level in 25 years**
 - Fewer than 10,000 Part I crimes for the 1st time in 25 years
 - 1985-2012: ZERO years with less than 12,000
 - Lowest Property Crime level in 25 years
- **80.0% Homicide Clearance Rate**
- **2nd Lowest Violent Crime levels in 10 years; 4th lowest in 25 years**
- **Robbery, Burglary and Larceny each at 25-year lows**
 - 5th consecutive year of Burglary decline after a 15-yr high
 - Fewer than 700 robberies for the first time in 25 years
- **Highest Total of Gun Seizures in 10 years**



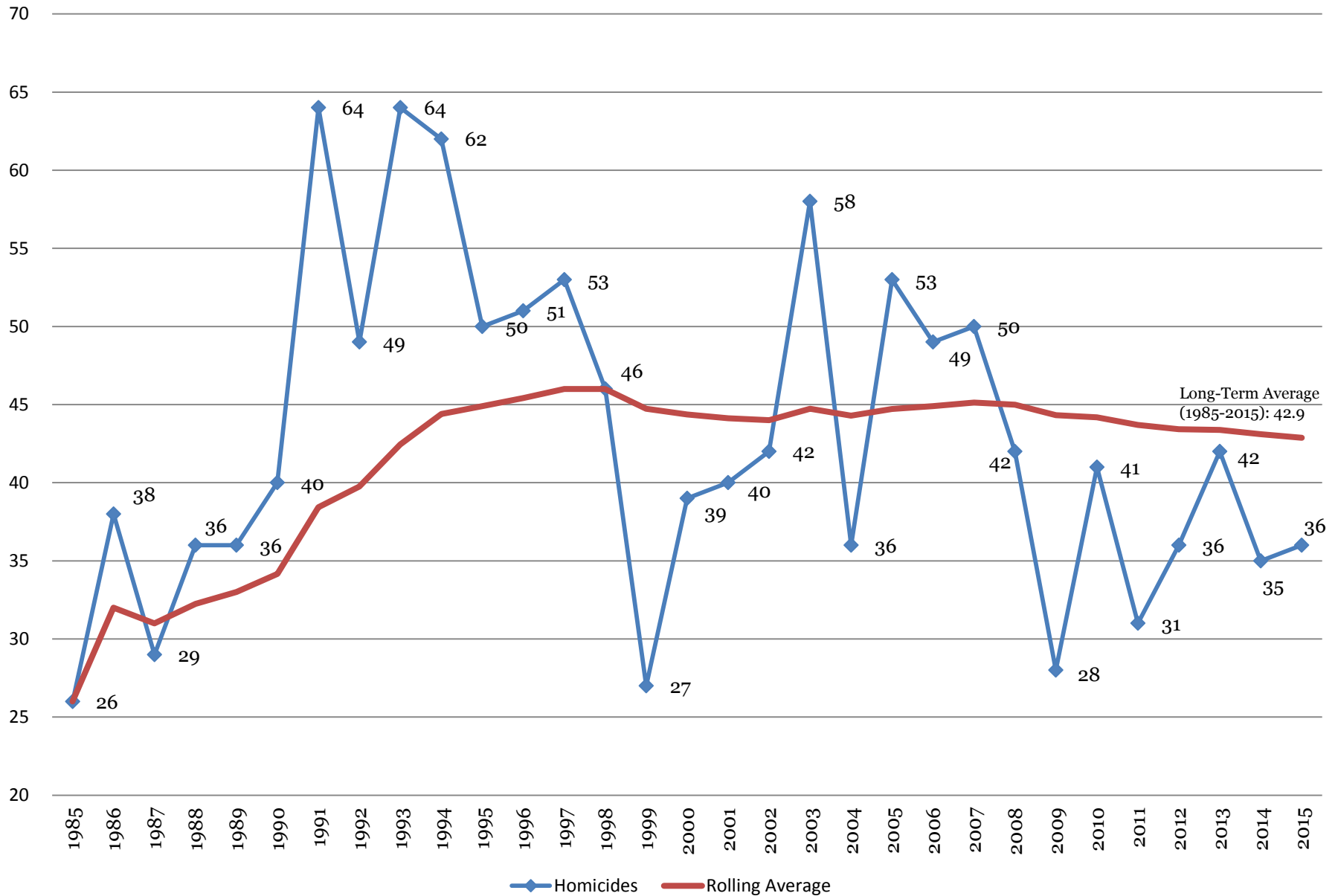
Homicide

Year	Murder
2015	36
2014	35
2013	42
2012	36
2011	31
2010	41
2009	28
2008	42
2007	50
2006	49
2005	53
2004	36
2003	58
2002	42
2001	40

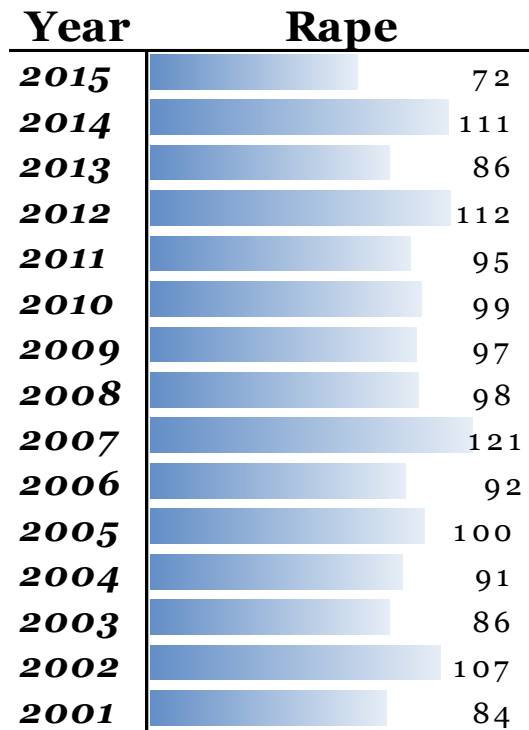
* One homicide is counted in the yearly totals per UCR standards but has been excluded from the 2015 analysis because the originating incident occurred in 1999.

- **Clearances:** 80.0% (28 out of 35*) of homicides closed with arrest by calendar year end
 - 9 additional cases closed from previous years
- **Weapon Type:**
 - 74.3% involving a firearm, consistent with long-term average (typically 75-80%)
 - 4 murders (11.4%) involved a knife/cutting instrument
 - 2 murders resulted from a physical beating or blunt object
- **Non-Random:** Victim knew the suspect in 22 instances
- **Circumstances:**
 - At least 51.4% (18/35) cases involved a dispute of some kind
 - 10 occurred during the immediate aftermath of a physical altercation

Rochester Homicide: 1985-2015



Rape



- Down 35.1% from 2014 and 28.7% from the 5-yr avg.
 - No abnormal monthly, weekly, or hourly patterns
- Weapon Type:
 - 89.6% involved no weapon (physical only)
 - 4 involved a knife/cutting instrument
 - 1 involved a simulated firearm
- Non-Random Violence:
 - 70.6% of cases involved a suspect known to the victim
 - Cases involving a stranger down 6.7% from 2014 and 25.5% from 5-yr average
- 79.5% of cases occurred indoors
 - Consistent with 2014 and 5-yr. average

Robbery

Year	Robbery
2015	654
2014	709
2013	895
2012	817
2011	755
2010	816
2009	846
2008	1,059
2007	1,032
2006	1,332
2005	1,026
2004	934
2003	1,166
2002	972
2001	921

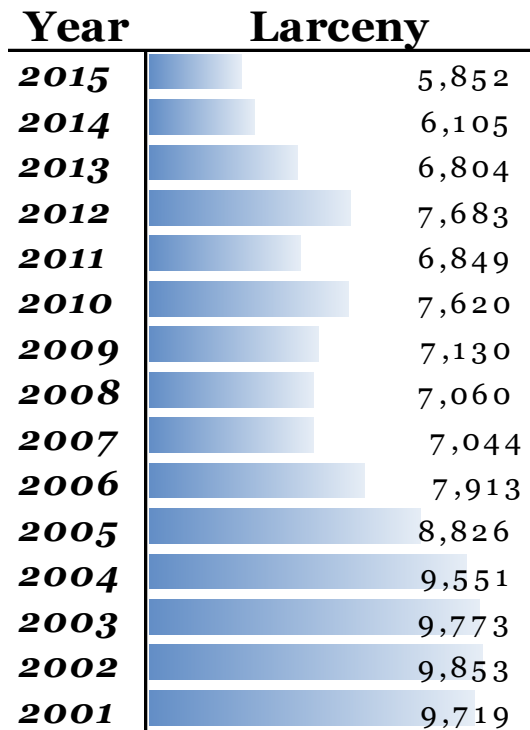
- Lowest Citywide robbery total in 25 years
- Down 7.8% from 2014 and 18.1% from 5-yr avg.
 - Goodman (-23.4%) and Clinton (-15.3%) drove the yearly decrease
 - Citywide double-digit decrease from 2014 in Q2 & Q3 (Apr-Sept.)
- Weapon Type:
 - 44.9% involved a firearm
 - 39.5% involved no weapon
 - 9.2% involved a knife
- Consistent with 5-year averages
 - 88.4% involved a suspect unknown to the victim
 - 72.6% occurred outdoors
 - About 1/2 (49.2%) occur between 3pm-11pm

Burglary

Year	Burglary
2015	1,762
2014	2,138
2013	2,507
2012	2,978
2011	3,384
2010	3,448
2009	2,899
2008	2,808
2007	2,582
2006	2,673
2005	2,758
2004	2,721
2003	2,497
2002	2,467
2001	2,459

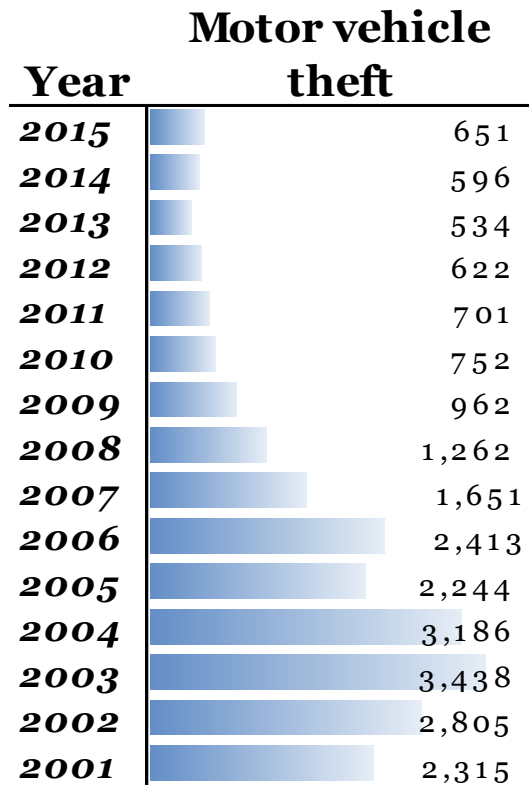
- Lowest Citywide Burglary total in 25 years
- Down 17.5% from 2014 and 39.1% from 5-yr avg.
- Double-digit year-to-year declines in each Section
- Residential burglaries account for 83.6% of all burglaries citywide
 - 42.5% have no forced entry
 - 20.6% involve unlocked doors or windows
 - 9.9% occur at vacant houses
 - 72.6% of metal thefts occur vacant houses

Larceny



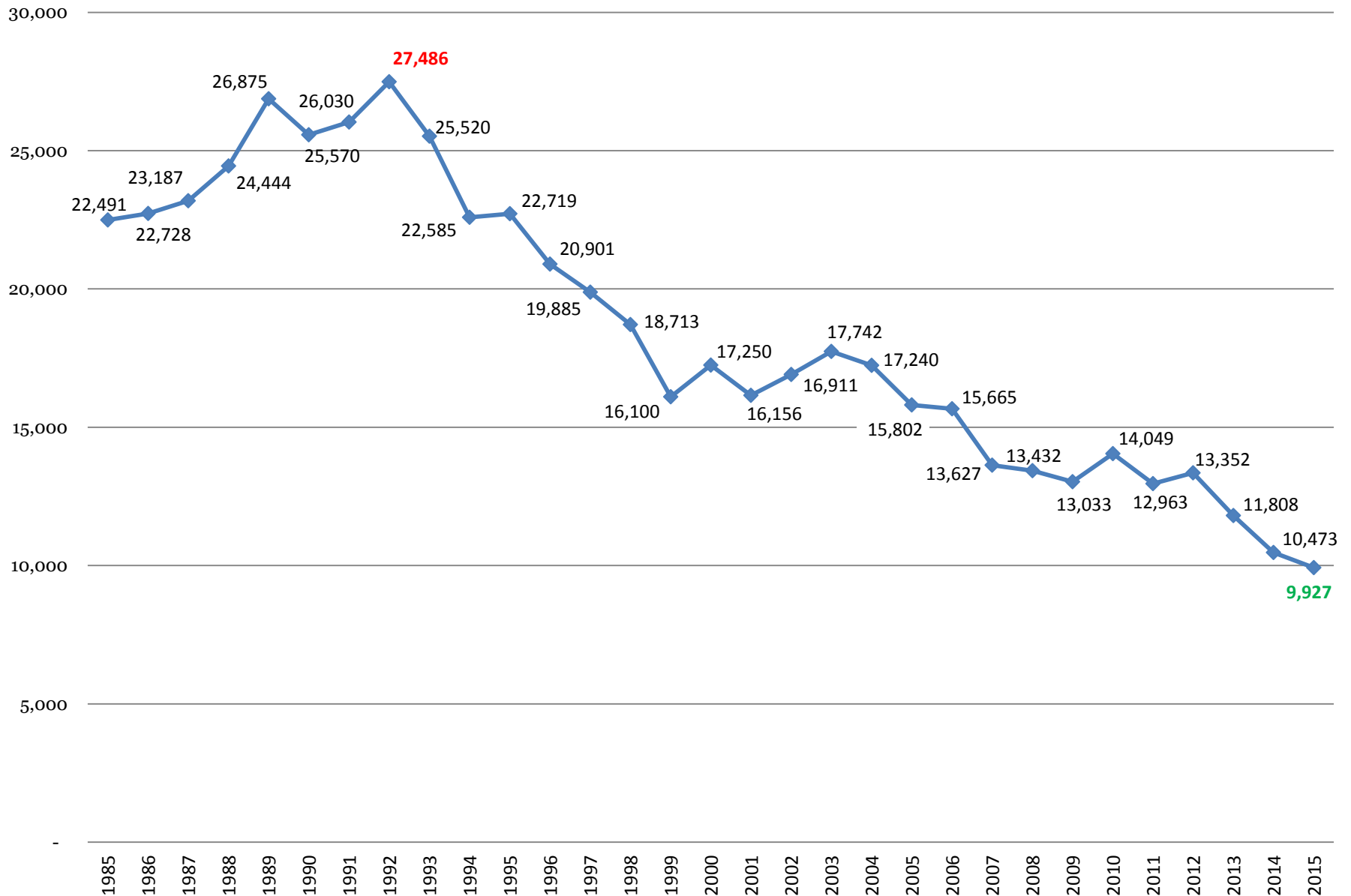
- Lowest Citywide Larceny total in 25 years
- Down 4.1% from 2014 and 16.5% from 5-yr avg.
- Car break-ins accounted for 48.7% of outdoor larcenies (20.8% of all)
 - 45.7% occur in a parking garage/lot
 - 47.3% occur on the street

Motor Vehicle Theft



- Increased 9.2% from 2014 and 1.6% from 5-yr. average
- Spiked in Q1 (Jan-Mar): up 41.9% from 2014
- Most common theft locations:
 - Street – 38.0%
 - Parking Lot – 20.6%
 - Residential Location – 20.1%
 - Commercial Location – 7.5%

Rochester Part I Crime: 1985-2015



Rochester Part I Crimes Per Capita (Crimes per 100,000 people): 1985-2015

